

Appendix B Existing Conditions

Long Range Transportation Plan



Existing Conditions

Contents

Introduction.....	2
Legislation and Policy Documents.....	2
Census Summary Trends.....	6
Community Health	8
Transportation Modes.....	10
Interactive Maps.....	21
Conclusion.....	22
Compiled Sources – Data and Documents	23



Introduction

The 2050 Long Range Transportation Plan (LRTP) is a strategic outlook that leads to investment and decision making to implement the TPA’s vision to improve Palm Beach County. This planning process encompasses all modes and users with special consideration for nonmotorized modes. The document provides an extensive overview of Palm Beach County’s status, in accordance with contextual information that provides up-to-date data on census trends, community health and affiliated programs, and day-to-day usage of transportation modes. This report is further corroborated via the corresponding interactive locational tool developed for this project.

Legislation and Policy Documents

Per the Infrastructure Investment and Jobs Act (IIJA), the requirements of a Long Range Transportation Plan (LRTP) update on the federal and state level are defined in this section, with additional attention paid to Planning Emphasis Areas (PEAs). Further, several legislative planning documents have been selected as necessary for more in-depth assessment as part of the process in shaping the vision for the 2050 iteration of the Palm Beach TPA LRTP, which will be described in the following sub-sections.

Document Summaries

Plans

The documents collected as part of this literature review pertain to the legislative and planning realm, and more specifically, the parameters by which a LRTP need to be constructed. This category of document summary, Plans, refers to all plans submitted in reference to the territories within Palm Beach County, primarily those that operate on a state and national level.

Statewide

The following plans in this category largely come from or are submitted to the Florida Department of Transportation (FDOT). As such, they cover a wide range of topics, though all offer insight into the built environment and conditions of existing Palm Beach County at a micro and macro level. A particular focus should be paid to the D4 Pedestrian and Bicycle Master Plan, the I-95 Manage Lanes Master Plan, and the Florida Transportation Plan (FTP), for the reasons that follow:

D4 Pedestrian and Bicycle Master Plan

Inventories the existing system of pedestrian and bicyclist facilities in District Four and develops a Master Plan to guide project development and goal implementation. It identifies problem areas of particular concern, particularly in the form of high crash rates or incidents of severe injury or death, and aims to propose projects that will improve safety, accessibility, and mobility.

I-95 Manage Lanes Master Plan

The Master Plan Study for the I-95 Managed Lanes from south of Linton Boulevard to the Palm Beach/Martin County line evaluates and analyzes the feasibility of implementing managed lanes throughout the corridor. Further, it determines the potential impact of the proposed project and serves as the basis to determine if a Project Development & Environment (PD&E) study needs to be conducted, and to what level of detail. Results of the Master Plan Study could be synthesized into the LRTP Cost Feasible Plan to determine which project(s) will be prioritized for programming.



Florida Transportation Plan (FTP)

This overarching plan designed by a 34-member advisory committee emphasizes congestion relief, partnerships for community-centric mobile solutions, supply chain resiliency and optimization, as well as next generation transportation solutions throughout the state. It additionally includes an implementation element, performance element, policy element, as well as a guiding vision as part of its 2020 edition.



HIGHWAY
SAFETY



HIGHWAY
INFRASTRUCTURE
CONDITION



HIGHWAY
RELIABILITY
AND FREIGHT
MOBILITY



TRANSIT ASSET
MANAGEMENT



TRANSIT
SAFETY

National

Department of Environmental Protection (DEP) FL Greenway & Trails System Plan 2019

Among the national-level documents informing our assessment of the available data and documents relevant for the 2050 LRTP include the Department of Environmental Protection's (DEP) Greenway & Trails System Plan, which highlights the health, ecological and overall community benefits of trails and greenways, as well as delineates a series of goals being pushed forward by this plan, including those pertaining to education, partner/stakeholder identification/establishment and engagement, "strategic investment of resources to advance system completion", promotion and marketing.



Municipal Plans

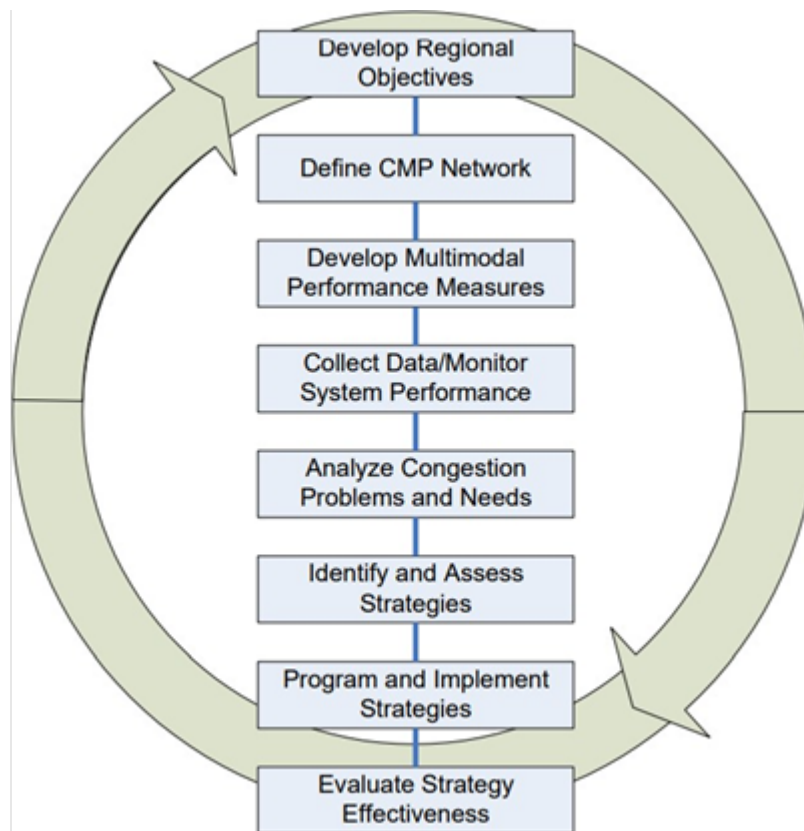
The plans created for and by the municipal level were consulted for each city in Pal. Nearly all cities in Palm Beach County have their latest municipal plans readily available online, but the most pertinent to the overarching LRTP 2050 have been selected for special emphasis in this section.

Policy and Guidance

The documents collected in this section serve to capture mandatory policy regulations, in addition to guidance documents for shaping the implementation of projects. As such, these documents serve to integrate operational elements of the transportation system, and how it can become more functionally managed.

Congestion Management Process Guidebook

A congestion management process (CMP) is an approach used to manage congestion via assessing alternative strategies that would best meet state and local needs. The aim of a CMP is to garner funding for the best congestion management strategies, as well as move them through implementation. As defined in federal regulation, the CMP “is intended to serve as a systematic process that provides for safe and effective integrated management and operation of the multimodal transportation system.”

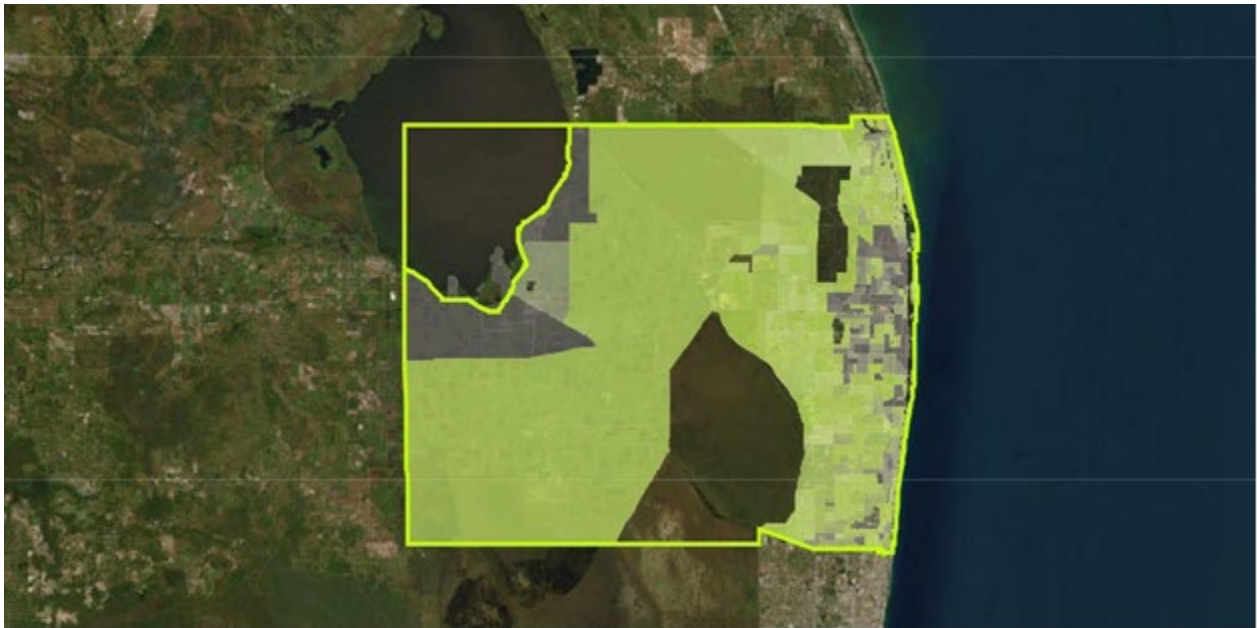


Existing Conditions and Area Profile

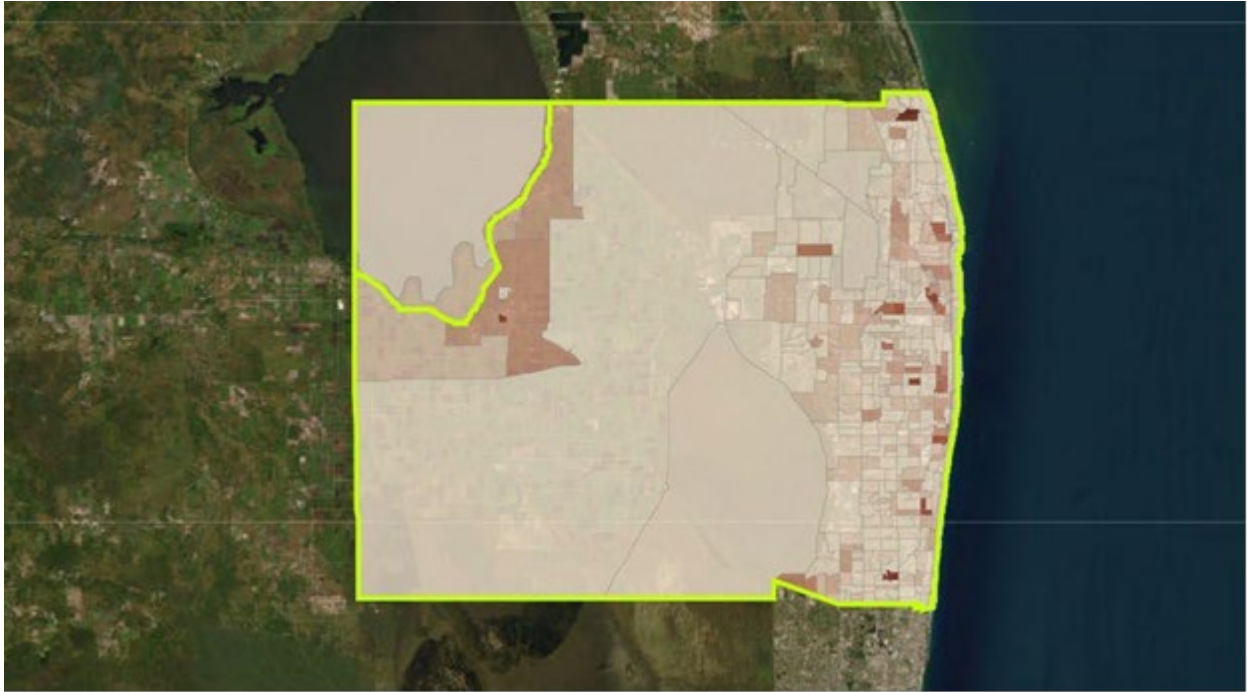
Palm Beach County covers 1,971 square miles and is the second largest county in the state of Florida. It is located north of Broward County and consists of 39 municipalities and 7 districts. The central and western areas are predominantly suburban and rural, though eastern Palm Beach County has high levels of urban development. Additionally, major industries within Palm Beach County include tourism, construction, and agriculture. According to Census data from 2022 the current population is 1.51 million residents, making Palm Beach the third largest county in the state of Florida behind Miami-Dade and Broward County.

Census Summary Trends

Palm Beach County serves as a destination for many visitors and employees/students as an area that serves commuters. With diverse residents the county does have a poverty status variable the percent of population whose income in the past 12 months is below poverty level. The municipalities on the northwest (Bell Glade, South Bay, and Pahokee) of Palm Beach County it is identified that there is a large percent of residents for whom poverty is determined this also includes other residents where poverty is below the federal poverty line. Additionally, areas along the east coast have also been identified as having residential pockets with low household income.



Regarding vehicle accessibility there are few areas where county residents do not have at least one vehicle per household. Further, the areas identified as having the highest incidence of residents with no vehicles available include Bell Glade, South Bay, and Pahokee in the northwest of the county. Additionally, the east coast area has small sections within municipalities with a high incidence of residents with no vehicle availability.



Palm Beach County has a population of 1,518,477 residents. Since the year 2019, there has been a notable increase in the county's population by roughly 20,000 residents. Due to the increase in residents' mobility options for all users, it is necessary to provide residents with easy and efficient modes of transportation. The following bullet points provide further context:

- 83.8% of residents are a single race. 24.2% of county residents are Hispanic or Latino, while 33.8% of residents speak a language other than English, and 15.0% of the total population speak English less than 'very well'.
- Of the total county population, 1,104,496 residents are Palm Beach County natives, while 413,981 were born outside of the United States.
- Palm Beach County has a wide variety of age ranges, with 281,799 residents under the age of 18 years old and 382,654 residents above the age of 65.
- 482,916 of residents are above the age of 60, with 45.3% of these residents being male and 54.7% being female. As the elderly population increases, transportation mobility options that prioritize accessibility and ease should be assessed, since these residents tend to live alone. 27.1% of the residents who are 60 years or older are disabled in the county. This will require necessary accommodations.
- The median age in the county is 45.5 years.

Community Health

With future development in transportation infrastructure, there is potential for both positive and negative impacts on the community. Palm Beach County's goal is to prevent harmful health impacts for county residents. Health Impact Assessment (HIA) will provide the county with an opportunity to incorporate health and transportation planning. This tool is mainly used to inform stakeholders of the potential health effects of the future of transportation. While also providing information to increase the potential health benefit and decrease potential harm for the county.

Vision Zero

Vision Zero is a strategy used to increase safety, health, and reasonable mobility for all Palm Beach County residents. The county adopted this strategy to eliminate all fatalities related to traffic and severe injuries. Below are Vision Zero's six (6) key principles:

- Traffic-related fatalities and serious injuries are preventable and unacceptable
- Human life takes priority over mobility
- Human error is inevitable, so the transportation system should allow for it to happen without death or serious injury
- A system-level approach to safety should be adopted to effect change
- Safe human behaviors, education, and enforcement are essential contributors to a safe system
- High speed is a primary cause of traffic death and serious injury; it should be managed with sensitivity to vulnerable road users

Visit the Vision Zero Action Plan website link for more information on this strategy: [Vision Zero](#)

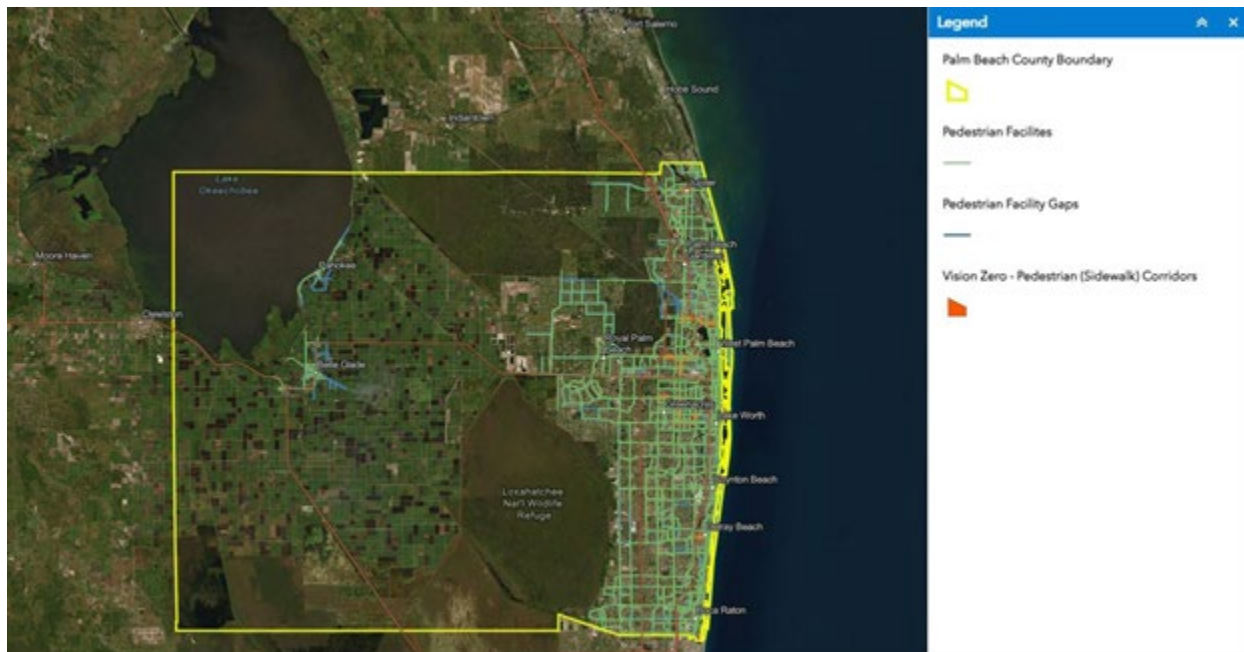
- [Palm Beach TPA](#)



Infrastructure

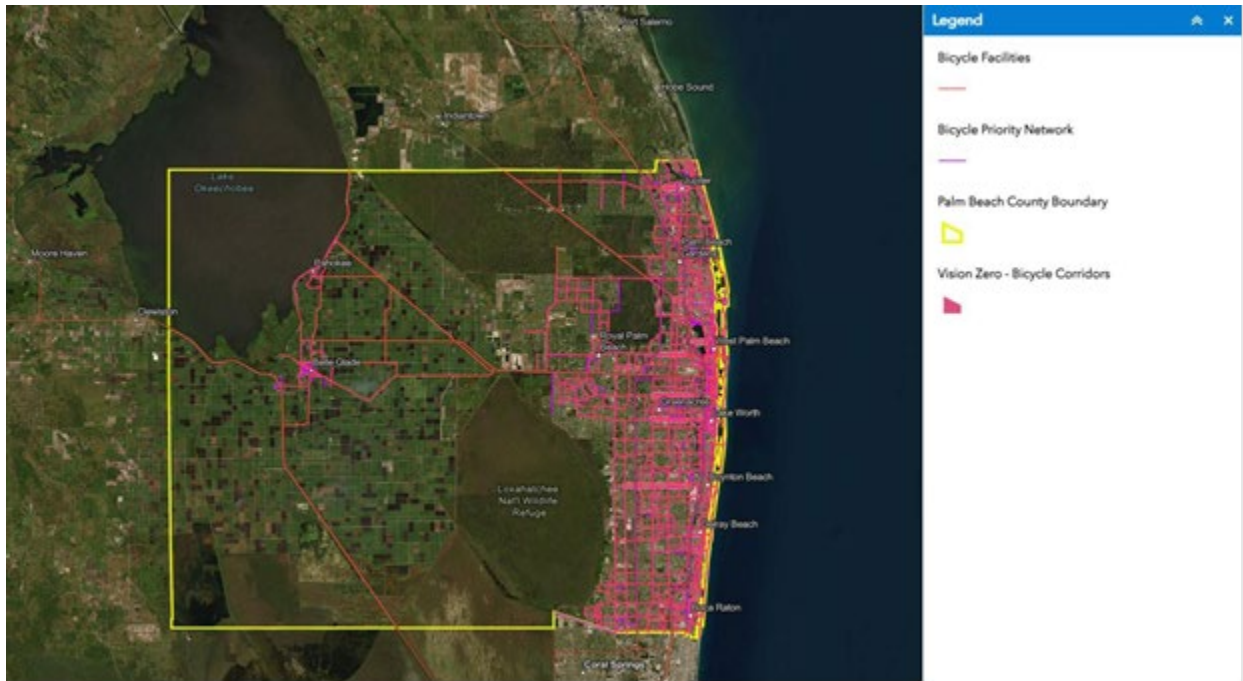
Pedestrian Facilities

The Complete Streets policy believes the pedestrian experience is important and prioritizes the transportation users' safety. The TPA has identified a hierarchy of users, this includes Pedestrians, Bicycles, Public Transit, Commercial Vehicles, and Personal Vehicles. The main objective of this approach is to provide connectivity that accommodates each transportation mode for county residents. It is important for the TPA to provide safety and connection for all users to enhance the quality of life and promote safety. The below map depicts existing pedestrian facilities and gaps within the county, as well as the corridors identified as priority corridors for Vision Zero:



Bicycle Facilities

In South Florida bicyclists must obey the same rules and regulations as vehicles. This includes stopping at stop signs and red lights, riding with the flow of traffic, and yielding the right of way when approaching a roadway. Palm Beach County has a variety of roadway bicycle facilities such as sharrows, designated (paved marked bicycle facility), undesignated (paved roadway should with no designated bicycle marking), and buffered bicycle lanes. Off-bike facilities include shared use paths and greenways. Bike Facilities throughout the county are shown in the map below:



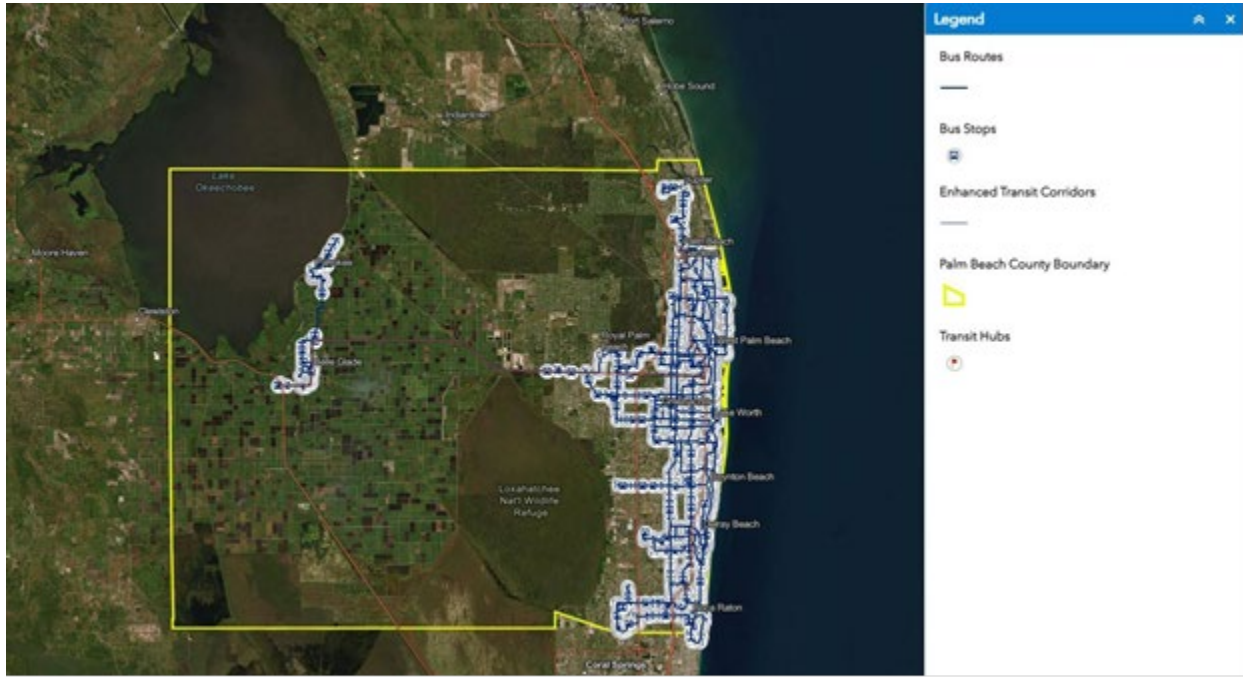
Transportation Modes

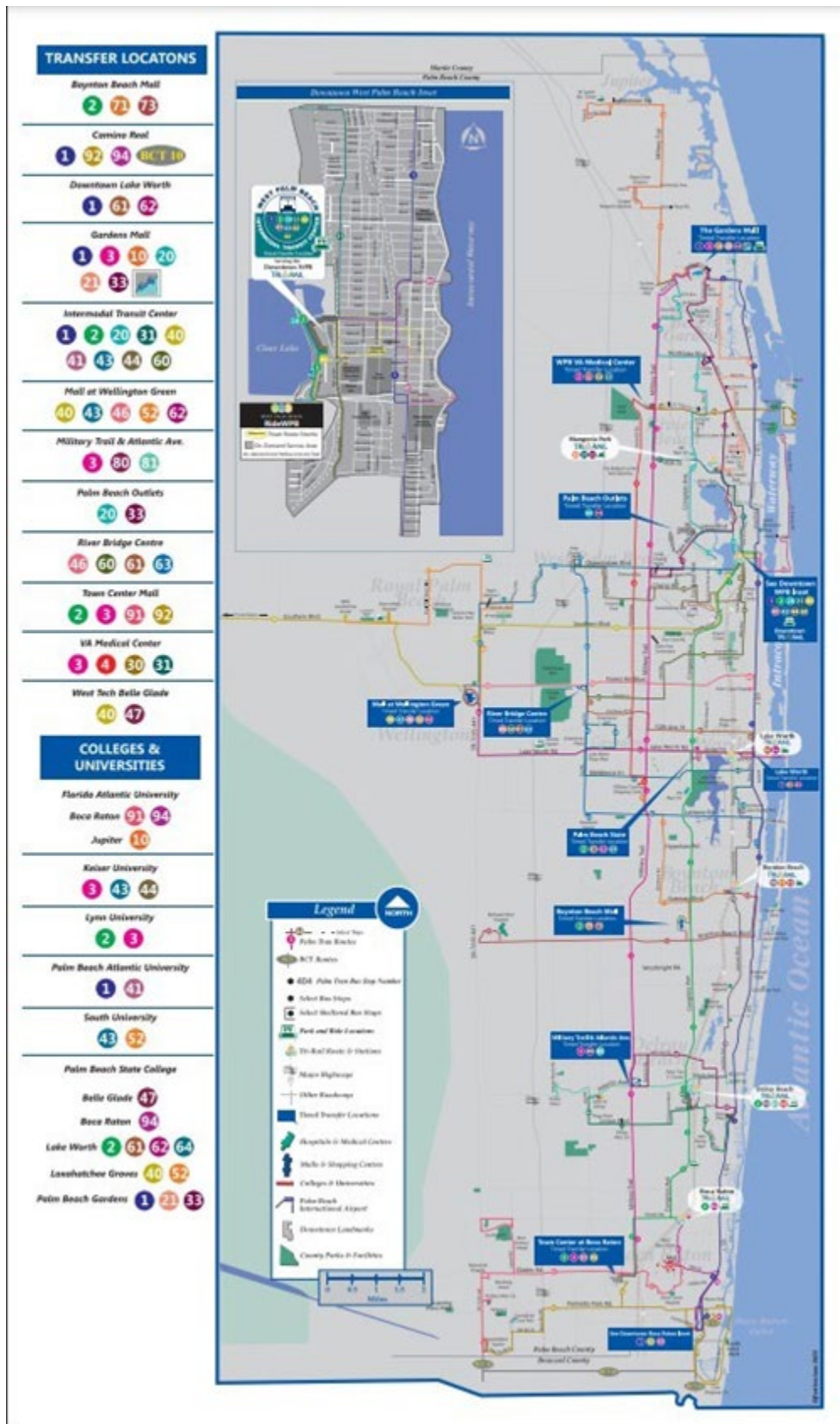
Providing alternate modes of transportation is important to enhance traffic congestion, increase mobility, and to provide the community with alternatives for users of the transportation networks.

Transit

Palm Tran formerly known as the CoTran is a local public transportation system serving Palm Beach County since 1971, this system was meant to serve residents and visitors with the main goal to provide all residents with a safe and efficient transportation experience. This transit system travels to every major destination in Palm Beach County. Palm Tran provides 31 routes and has a daily ridership of 28,000 riders per day. Additionally, Palm Tran provides a connection system for elderly or disabled residents who are not able to transport themselves easily. This system allows residents who are reliant on others for transportation an easy and efficient way of having a reliable form of transportation.

Palm Tran also offers an easy and affordable service for everyone called "Go Glades", which operates four different routes throughout the region. This system allows residents to board at fixed stops predetermined by the resident before scheduled pick up. The maps on the following pages illustrate the existing bus routes and stops, enhanced transit corridors, and transit hubs within Palm Beach County, as well as the overall PalmTran system map.



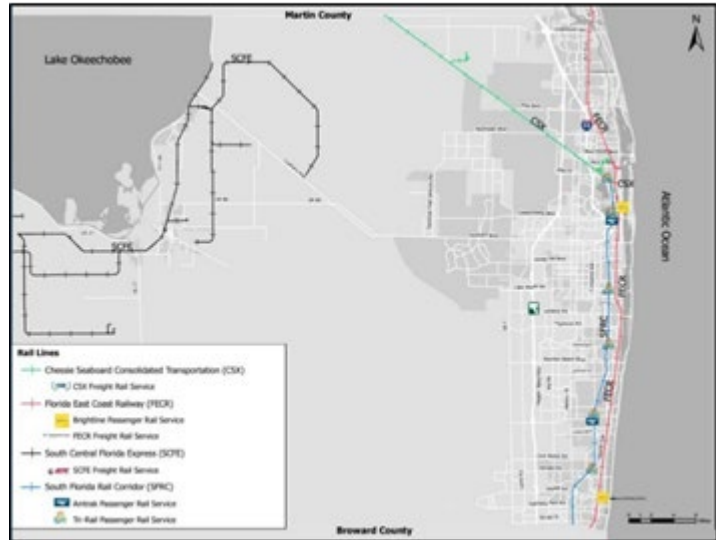


Freight & Rail

Florida East Coast Railway (FECR)

FECR (Florida East Coast Railway) is one of the leading transportation suppliers in the rail and intermodal business providing rail-based transportation services.

Brightline is a high-speed rail system along the Florida East Coast (FEC) railway, this railway provides services between Miami and Orlando along the FEC.



South Florida Rail Corridor (SFRC)

Tri-Rail is south Florida's commuters' rail system spanning 71 miles from Magnolia Park to the Miami International Airport. This rail system was developed by the SFRTA (South Florida Regional Transportation Authority) to provide connection between Palm Beach County, Broward County, and Miami Dade County, this rail system has been active since 1989.

Amtrak, the national rail operator providing a system that is looking to deliver safer, high quality and efficient passenger experience with 19 existing stations in South Florida. This transportation system provides energy efficient travel through three routes in South Florida these routes include Auto Train, Silver Metro, and Silver Star.

South Central Florida Express (SCFFE)

U.S. sugar owns and operates the South-Central Florida Express (SCFE) railway in western Palm Beach County. As a convenient and reliable carrier that provides dual access to ship to CSX and NS/FEC. The South-Central Florida Express handles a variety of commodities which include aggregate, building products, fertilizer, grains, metals, molasses, petroleum products, and sugar. This rail services provides transport to the only sugarcane farming company that transports all sugarcane via railroad. Additionally, rail carts can carry 40 tons of sugar cane.

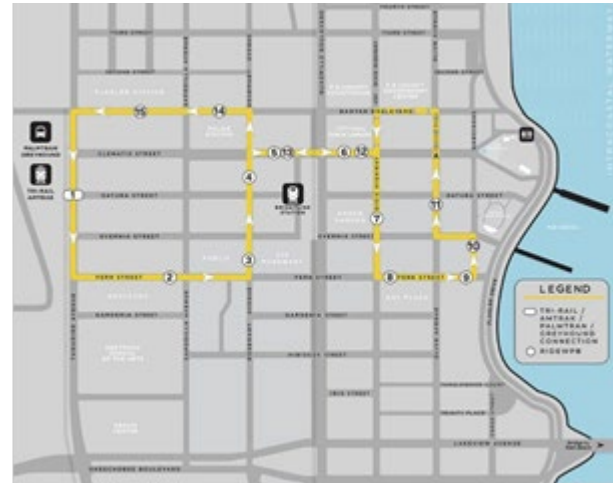
Chessie Seaboard Consolidated Transportation (CSX)

One of the two main rail corridors that is running through Palm Beach County, the CSX railway corridor. A portion of this railway corridor is own by the Florida Department of Transportation (FDOT) for use of Tri-Rail commuter trains.

Local Circulators

Ride West Palm Beach (WPB)

Ride West Palm Beach (WPB) is a free efficient carbon free mobility option for residents interested in going to downtown West Palm Beach area and waterfront. This free transportation alternative provides passengers with a 15-stop route from South Tamarind Avenue and the Tri-rail station to the west, to south Olive Avenue on the east. Another Local circulator alternative Palm Beach County provides includes:



Circuit

Circuit is an affordable ecofriendly ride in Palm Beach County. These all-electrical shared vehicles reduce emissions in the community. This efficient shared ride experience decreases traffic congestion while also creating jobs and promoting the local businesses in the county.



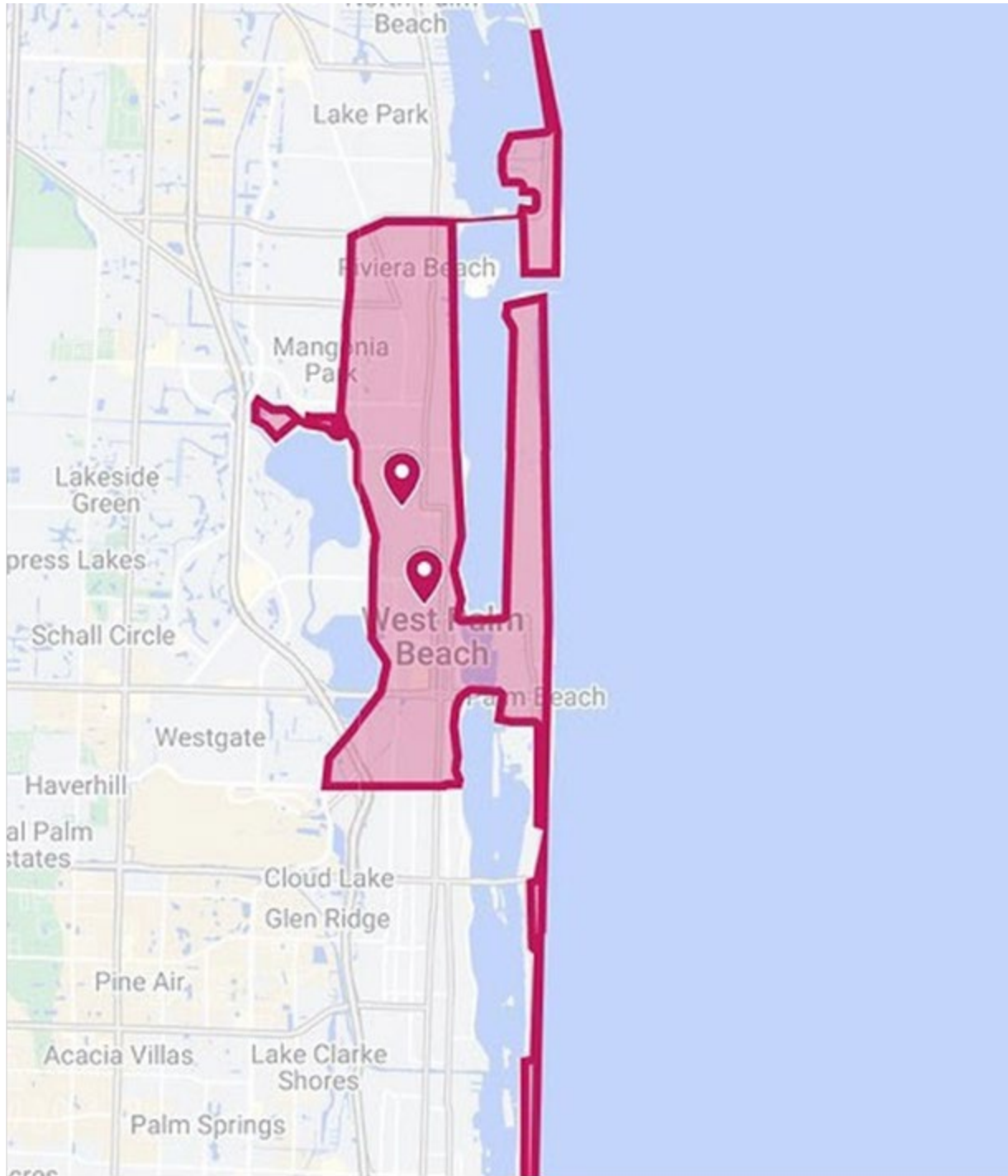
Freebee

Freebee is a South Florida electrical transportation company that provides residents with a ride anywhere in the downtown area with Global electric motorcar. Residents may request a ride anywhere in the downtown area, which includes locations east of I-95 to A1A, and Gulfstream Boulevard to S.W. 10th Street.



Rose Trolley

Rose Trolley is a transportation system that uses an alternative energy source that provides Palm Beach County residents an opportunity to explore West Palm Beach and the surrounding areas.



Bright Bike

Bright Bike is an official bike sharing and rental system for the city of West Palm Beach, developed with the support of Brightline and the West Palm Beach Downtown Development authority. This system provides residents with additional transportation options in the following planned locations:



Planned locations:

01. Tri-Rail WPB
02. Clematis St & Quadrille Plaza Dr
03. PBC Courthouse
04. Publix at The Square along Rosemary Ave
05. Brightline WPB Station
06. City Hall
07. Clematis St & S Olive Ave (APR install)
08. N Narcissus Ave & Clematis St
09. The Ben Hotel
10. S Flagler Drive
11. Evernia Garage
12. S Dixie Hwy
13. Chase Ave & Okeechobee Blvd
14. The Square along Hibiscus St
15. PBC Convention Center (pending)
16. 700 Block of S Dixie Hwy
17. Trinity Park
18. Loftin Apartments (pending)
19. N Flagler Dr & Palm Beach Lakes Blvd

Park and Ride Lots

These specialized park and ride lots are strategically located in areas away from heavy congestion, with the purpose to serve local fixed transit routes, buses, and carpoolers. Below are 15 park and ride facilities located in Palm Beach County:

Park and Ride Lots	Locations
1. Indian Road and Central Boulevard	6401 West Indiantown Road Jupiter, FL 33458
2. West Indiantown Road Parking	7733 West Indiantown Road Jupiter, FL 33478
3. PGA Boulevard and Turnpike Mile post 109 Park & Ride	East of 6221 PGA Boulevard Palm Beach Gardens, FL 33418
4. Magnolia Park Tri-Rail Station	1415 45 th Street West Palm Beach, FL 33407
5. Shops at Southern Palms	8551 Southern Boulevard West Palm Beach, FL 33411
6. West Palm Beach Tri-Rail/Amtrak Station	203 South Tamarind Avenue West Palm Beach, FL 33401
7. Palm Beach Outlets	1751 Palm Beach Lakes Boulevard West Palm Beach, FL, 33401
8. West Palm Beach Park & Ride	North lot behind 9835 Okeechobee Boulevard West Palm Beach, FL 33411
9. Wellington Park and Ride	2176 Wellington Green Drive Wellington, FL 33414
10. Oakton Commons Park & Ride	8101 Okeechobee Boulevard West Palm Beach, FL 33411
11. Lake Worth Road and turnpike Milepost 93 Park & Ride	Northeast from 8100 Lake Worth Road Lake Worth, FL 33407
12. Lake Worth Tri-rail station	1703 Lake Worth Road Lake Worth, FL 33460
13. Boynton Beach Tri-Rail Station	2800 High Ridge Boynton Beach, FL 33426
14. Delray Beach Tri-Rail/Amtrak Station	345 South Congress Avenue Delray Beach, FL 33444
15. Boca Raton Tri-Rail Station	680 Yamato Road Boca Raton, FL 33431



Port of Palm Beach

The Port District is in Palm Beach County, Florida covering 971 square miles and approximately 50% of the county area. The port of Palm Beach district is an independent special taxing district, a subdivision of the state of Florida. This port is the fourth busiest container port of Florida's 14 deep water ports and is the 18th busiest container port in the United States.

Airport

Palm Beach County Department of Airports has identified four airports within the county, including:

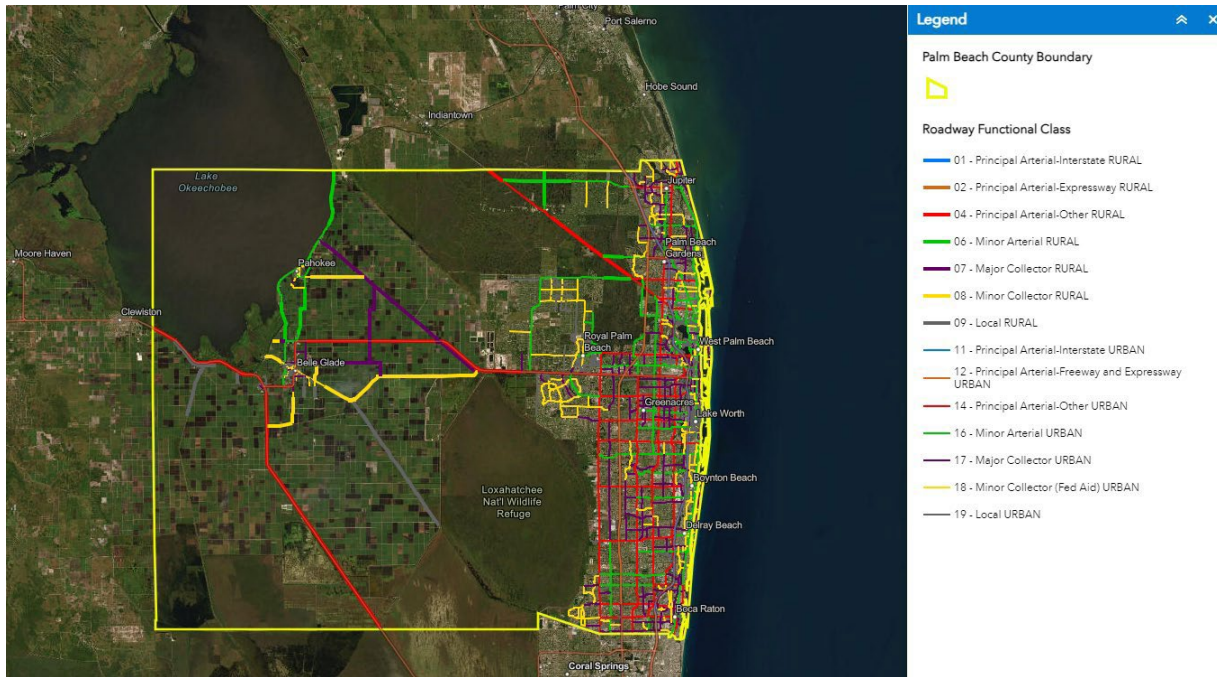
- Palm Beach International (PBI) airport - Passenger Airlines and General Aviation
- North Palm Beach County General Aviation Airport (F45) - General Aviation
- Palm Beach County Park Airport (LNA) - General Aviation
- Palm Beach County Glades Airport (PHK) - General Aviation

Roadway

There are various centerline roadways located in Palm Beach County. The roadway system is determined through a hierarchy system with numerous classifications that allow equal mobility and accessibility needs for county residents.

Classifications

Roadway classifications are established according to service provided regarding total roadway network. Arterials are roadways with higher functional classification that provide better mobility but have less accessibility. Additionally, arterials are maintained by FDOT, while most minor arterials, collectors, and local roadways are maintained by local municipalities. Palm Beach County mainly consists of Urban Principal Arterials, Urban Minor Arterials, and Urban Collector roadways.



Interactive Maps

For the 2050 LRTP's data collection effort, interactive maps were developed to visualize the existing and planned projects that Palm Beach County has in the projected future. The following map lenses provide an outline for future transportation network/systems as well as a comprehensive overview of existing conditions. The hub site for the interactive maps is available at the following link:

[Palm Beach TPA LRTP Vision 2050](#)

Socioeconomic & Demographic Data

This interactive map identifies socioeconomic and demographic characteristics using compiled Census data. It provides layers to explore a variety of socioeconomic categories, including future and existing land use, existing employment, and median household income. Within the layer list are details regarding census tract, employment types, and the number of individuals in each area. Other details include the Gini Index of Income Inequality which is sorted further by census tract and index value. This interface also identifies vehicle availability data on a per household basis throughout the county. Additionally, the poverty status variable is identified in this interactive map at the household level, depicting areas with the highest number of residents below the federal poverty line.

[Palm Beach County Socioeconomic & Demographic Data | Palm Beach County TPA LRTP Vision 2050](#)

Transportation

The Palm Beach County Transportation interface provides a clear overview of the transportation network components within the county. It identifies transportation systems available to the public allowing a clear vision of the future transportation development in the area based on the currently existing gaps. The existing systems include bus routes, bicycle and pedestrian facilities, priority networks, and roadways, while also depicting the functional classifications to shape better understanding of the urban and rural functional designations throughout the county. Additionally, the classification layers provide details on the future projects including project type, limits, plan study, and the fiscal year of various projects. These details vary based on the layer specified.

[Palm Beach County Transportation | Palm Beach County TPA LRTP Vision 2050](#)

Origin-Destination

The interactive map was developed using census data from March 2022. This map identifies destination flow throughout the county of four different travel modes: private auto, transit, biking, and walking. Totals for each mode are separated as outgoing, incoming, internal, and round trips. Subsequently, the location totals are markers identified within the county that provide context and allows for a clear reading of frequency trips between locations within Palm Beach County. The county also notes the data identified is included in the FlowmapBlue website, linked within the interactive map's website.

[Palm Beach Origin-Destination | Palm Beach County TPA LRTP Vision 2050](#)

Conclusion

The documents collected here serve to provide a summary overview of the existing conditions within Palm Beach County. As such, the following appendix will delineate the compiled sources utilized in the process of developing this piece of the overarching Long Range Transportation Plan 2050 report. Auxiliary documentation referenced for this task are not replicated in full in the appendix due to concerns regarding page count and redundancy – nevertheless, these documents are all public-facing, readily available online, and in many cases, linked directly from their listing in the Appendix that houses them.

The aim of this data compilation effort is to offer a comprehensive impression of Palm Beach County's status in all pertinent variables related to transportation and surrounding capacities. It is operating from the perspective lenses of local, state, and national level policy documentation, and is therefore guided directly by this framework, and then further reinforced through census data and the corresponding locational tool developed for this project.

Compiled Sources – Data and Documents

DEP FL Greenway & Trails System Plan 2019

- Describes the ecological, health, and overall community benefits of trails and greenways, as well as delineates a series of goals being pushed forward by this plan, including those pertaining to education, partner/stakeholder identification/establishment and engagement, “strategic investment of resources to advance system completion”, promotion and marketing.

DEP Greenway & Trail and Map

- Provides the public with trails and greenways on a state and regional level, to represent and support the opportunities, priorities, and state parks through visual maps which is supported by the Florida Greenway and Transit Council.

FDOT – ETDM

- Efficient Transportation Decision Making Manual (2021), serves as steppingstone to Project Development & Environment Phase (PD&E) Manual

FDOT – ETDM Process Diagram

- A visual diagram that provides context to the community coordination and Environmental Technical Advisory Team (ETAT) process before the Project Development Environmental Phase.

FDOT – ETDM Programmatic Agreements

FDOT – ETDM to PD&E Diagram

FDOT 2035 Aviation System Plan

- Analyzes the state’s system of airports as a whole in an effort to determine needs and future requirements.

FDOT Aviation System Plan – Elevate Annual Reports 2020 and 2020 and 2021 Brochure

- Graphical representations of statistical information as well as aviation system goals, socioeconomics, access, and an aviation data dictionary

FDOT Aviation System Plan URL

FDOT Bike Routes coordination

- FDOT website providing US bike routes by district

FDOT Bike Routes GIS maps

- Interactive map that provide FDOT bicycle friendly routes for pedestrians

FDOT CAV Business Plan – 2019

- Connected and Automated Vehicles (CAV)

FDOT Complete Streets website

- FDOT website providing complete streets projects and supporting resources around the state of Florida.

FDOT Congestion Management Process Guidebook

- “A congestion management process (CMP) is a systematic and regionally accepted approach for managing congestion that provides accurate, up-to-date information on transportation system performance and assesses alternative strategies for congestion management that meet state and local needs. The CMP is intended to move these congestion management strategies into the funding and implementation stages. The CMP, as defined in federal regulation, is intended to serve as a systematic process that provides for safe and effective integrated management and operation of the multimodal transportation system.”

FDOT Connected and Automated Vehicle Initiative

- FDOT website that provides project and initiatives for areas across South Florida such as planning, design/implementation, operational and legacy.

FDOT Context Classification Guide 2022

- Broadly identifies the various built environments existing in Florida into categorical classification.

FDOT D4 Pedestrian and Bicycle Master Plan

- Inventories the existing system of District Four and develops a Master Plan to guide project development and goal implementation.

FDOT Electric Vehicle Infrastructure Deployment Plan

- Introduces implementation strategies for infrastructure deployment, as well as conditions present and future

FDOT Freight FMTP

- Freight Mobility and Trade Plan. Includes a brief history, FDOT and Partner Agency Plans, Vision to Implementation, and FMTP Objectives including improving freight system safety and security, creating a more resilient multimodal freight system, reducing congestion, as well as improving last mile connectivity for all freight modes. Includes acronyms list, as well as 10 technical memorandums.

FDOT Freight SUMA Freight Performance Dashboard

- SUMA (Support for Urban Mobility Analysis) a dashboard that provides bottlenecks based on the delay and mile radius.

FDOT FTP

- Florida Transportation Plan. Overarching plan designed by 34-member advisory committee that emphasizes congestion relief, partnerships for community-centric mobile solutions, supply chain resiliency and optimization, next generation transportation solutions. Includes an implementation element, performance element, policy element, as well as a Vision for 2020.

FDOT I-95 Manage Lanes Master Plan

- “The Master Plan Study for the I-95 Managed Lanes from south of Linton Boulevard to Palm Beach/Martin County Line evaluates and analyzes the feasibility of implementing managed lanes along the corridor, determines potential impact of the proposed project and serves as the basis to determine if Project Development & Environment (PD&E) study needs to be conducted and to what level of detail. Results of the Master Plan Study may feed back into the LRTP Cost Feasible Plan in order to determine what project(s) will be programmed.”

FDOT LOS D4 LOS Assessment

- Level of Service, scored through six letter grades, A through F. The purpose of this report is to document the existing and future projected daily LOS along major roadways in the five counties within Florida Department of Transportation District Four (FDOT D4): Broward, Palm Beach, Martin, St. Lucie, and Indian River.

FDOT LOS Generalized Service Volume Tables – 2012

- Annual average daily volumes for Florida’s urbanized areas, separated by interrupted and uninterrupted flow facilities.

FDOT Motor Carrier System Plan – 2017

- Addresses trucking and motor carrier initiatives in a plan separate from the multimodal FMTP, also authored by FDOT.

FDOT Motor Carrier System Plan URL

- An FDOT website that provides all the updated model plans in regard to the Freight Mobility and Trade Plan, the updated Florida Transportation plan, and the Motor Carrier System Plan to complete the systems set. Also, including Business Forum Presentations 1-4.

FDOT NEPA Assignment MOU 2016

- ‘Memorandum of Understanding’ regarding State of Florida’s participation in the surface transportation project delivery program pursuant to 23 U.S.C. 327.

FDOT Preliminary Context Classification TDA URL

- An open data hub providing context classification features for applicable Florida Roadways with data that was compiled from FDOT Roadway Characteristics inventory data.

FDOT QLOS Handbook 2013 and 2023

- Quality/Level of Service handbook. Used for capacity at generalized and conceptual planning levels, as well as provides tools for quantifying multimodal transportation service inside the roadway environment (inside of right-of-way).

FDOT Rail System Plan

- Rail system website to supporting the Florida Statutes by providing public transparency in terms of identifying priorities and funding levels to execute state and regional goals. This website provides plans, rail related economic, and environmental impacts pertaining to each project. Supporting document Chapters 1- 6, Appendix A- J.
- The Florida Department of Transportation (FDOT) develops the Rail System Plan to guide the state's rail freight and passenger transportation planning activities and project development plans. This Plan:
 - complies with Section 341.302(3), Florida Statutes, which require an identification of priorities, programs, and funding levels required to meet statewide and regional goals.
 - meets the requirements embodied in the Federal Passenger Rail Investment and Improvement Act (PRIIA), as amended by the Fixing America's Surface Transportation Act (FAST Act) of 2015, and in the Federal Railroad Administration's (FRA) State Rail Plan Guidance.
 - describes the state's existing rail network, its challenges and opportunities, and rail-related economic and socio-environmental impacts of each rail mode.
 - includes Florida's Rail Vision and Supporting Goals, along with both proposed publicly sponsored short and long-range capital improvements and policy recommendations to achieve the Vision and Goals.

FDOT Resilience

- Prepared for district 4. Regards increase the resilience of transportation infrastructure, by providing insights into practice, processes, and methodologies that peer agencies follow to create resilient transportation projects on national and statewide levels.

FDOT SIS

- Strategic Intermodal System Funding Strategy; five-year plans on a district by district basis.

FDOT Seaport and Waterways System Plan 2022

- Plan prepared under statutory requirements; documents seaport and waterway system needs on a 5-, 10-, and 20- year basis. Ensures seaport facilities are strategically and efficiently integrated with other transportation facilities.

FDOT SHSP 2021

- Strategic Highway Safety Plan. Vision Zero – zero fatalities and serious injuries. A framework is established through this plan with the explicit goal of improving safety and efficiency on roadways.

FDOT SIS 2029-2045 CFP

- A cost feasibility plan guided by the Florida Transportation Plan (FTP) providing context for future planned projects, this includes future revenue and phased plans.

FDOT SIS DATA 2045

FDOT SIS DATA 204_mmunp

FDOT SIS data adopted 1st5.

FDOT SIS data approved2nd5_2022

FDOT SIS Designation Criteria (Strategic Intermodal System Designation Criteria)

- System report provides a clear understanding of the existing framework while also providing an understanding for SIS and facility designation. It also identifies SIS hub criteria, such as destination, corridor designation, and intermodal connector designation.

FDOT SIS Handbook

- A handbook with consolidated information related to SIS, such as history, existing facilities, policy, guidance, Work Program coordination, planning, and prioritization.

FDOT SIS Plans and Projects

FDOT SIS policy Plan – 2022

- Identifying the framework for planning and managing SIS.

FDOT Sun Trail info

FDOT Sun Trail Maps

FDOT SIS 2045 Multimodal Unfunded Needs Plan Executive Summary

- Multimodal Plan that provides a strategic intermodal system overview while identifying demographic trends, unfunded needs by district & modes.

FDOT Traffic Incident Management Plan

- (TIM) program. Incorporates technology, resources (FDOT's service patrol program, as well as The Rapid Incident Scene Clearance (RISC) incentive, and institutional support structure.

FDOT Transportation Asset Management Plan – 2019

- Transportation Asset Management Plan identifies the processes used to enhance the condition and performance of the National Highway System in regard to pavement and bridge assets

FDOT TSM&O Master Plan and Strategic Plan

- Transportation Systems management and Operations philosophy with strategies and clear performance measures to optimize performance outcomes. Formally endorsed as an FDOT program in 2010.

FEMA Hazard Mitigation Grant Program 2023

- Assistance Program and Policy Guide

FHWA

FHWA Alternative Fuel Corridors

FHWA Health in Transportation Corridor Planning Framework

FHWA Truck Freight Bottleneck Reporting Guidebook

FWS Region 4 LRTP

- Fish and Wildlife Service Long Range Transportation Plan identifies the current and future conditions while determining transit needs and potential projects. Prioritizes projects based on performance, funding, and opportunities with state agencies.

Lake Worth CRA

- Citizens Master Plan; Lake Worth TOD Charrette Study from 10th ave North to 6th Ave south, and congress Ave to Intracoastal Waterway

Lake Worth – TOD Charrette

- The charrette improves the city's potential for transit by identifying opportunities and strategies.

PB North Chamber

- Smart and Connected Region and Disaster Resiliency Action Plan

PalmTran TDP Annual Progress Report 2023

- Recently updated performance metrics of PalmTran service.

PBIA Master Plan Report 2018

- Palm Beach International Airport

SFRTA TDP FY 2023-2032

- Annual Progress Report on SFRTA, full-service public transportation authority operating throughout Miami-Dade, Broward, and Palm Beach Counties.

Southeast FL Regional Climate Action Plan 3.0

- Recommended actions and interdependent strategies in response to climate change; “voluntary framework” designed to “align, guide, and support the acceleration of local and regional climate action in southeast Florida toward a shared vision of a low-carbon, health, prosperous, more equitable and more resilient region.”

TCRPC

- Treasure Coast Regional Planning Council.

TPA Greenways & Trails Plan

- Conceptual guide for the Palm Beach MPO and others to document, and prioritize/advance projects, as well as establish integrated network of non-motorized connections throughout the region.

USDEO Fueling Station Maps URL

USDOT National Highway Freight Network Map

USDOT National Highway Network

USDOT-USDOE-HUD US National Blueprint for Transportation Decarbonization

Plans Municipal

Palm Beach County Comprehensive Plan

- A comprehensive plan that identifies the goals, objectives, and policies for the entire area of Palm Beach County.

Palm Beach County Municipalities URL

- Palm Beach County website that provides URLs on the 39 municipalities within Palm Beach County website.

Atlantis Budget FY 21-22

- A technical memorandum providing information on the city of Atlantis budget for the FS 21- 22.

Belle Glade Budget FY 22-23

- Adopted Budget for the city of Belle Glade.
 - Belle Glade Comprehensive Plan
 - A comprehensive plan that identifies the goals, objectives, and policies the city of Belle Glade has in the planned future.
 - Belle Glade Zoning Map
 - Greenacres Budget FY 222-23
 - Greenacres Comprehensive Plan
 - A comprehensive plan that identifies the goals, objectives, policies, and elements the city of Greenacres has in the planned future. These identified

elements include future land use, Transportation, infrastructure, conservation, and recreational.

- Conservation Element
- Infrastructure Element (Goals)
- Infrastructure Element (Intro)
- Transportation Element
- Recreational & Open Space Element
- Housing Element
- Advisory Future Land Use
- Future Land Use Element
- Future Land Use Map
- Intergovernmental Coordination Element
- Capital Improvement Element
- Annexation Element

Greenacres Comp Ch. 3 Transportation Element

- Technical report is a mandatory element pursuant to Chapter 163.3177(6)(a), Florida Statutes. This report details the future of motorized and non-motorized traffic circulation systems with emphasis on public transportation systems throughout the City of Greenacres. Providing the future traffic conditions and recommended improvements to advise impacts on the existing roadways.

Greenacres Comp Ch. 6 Future Land Use Element

- This technical report includes criteria for the Future Land Use and designate future land use for patterns to support the goals, objectives, and policies of the city of Greenacres.

Greenacres Comp Plan URL

Greenacres GIS URL

Greenacres interactive ArcGIS base interface allowing the public. This map allows the public to easily identify the existing Greenacres boundary, future land use, city zoning, schools, and roadway jurisdiction.

Jupiter TPA 2023_27_TIP (Transportation Improvement Program) _Local Projects

Jupiter CIP (Capital Investment Program) FY23

Jupiter Comprehensive Plan

- A comprehensive plan that identifies the goals, objectives, policies, and elements the city of Jupiter has in the planned future. These identified elements include future land use, Transportation, infrastructure, conservation, and recreational.
- Future Land Use
- Property Rights
- Transportation Element
- Housing Element

- Conservation Element
- Coastal Mgt Element
- Recreation and Open Space Element
- Infrastructure Element
- Intergovernmental Coordination Element
- Capital Improvements Element
- FY 2021-2025 CIP
- Amendments 07-07-20

Cumulative Table of Amendments

- Amendments 09-22-20

Cumulative Table of Amendments

- CRA Budget FY23
- Jupiter GIS URL
- Palm Beach County Article13 – Impact Fees

A report that is consistent with the comprehensive plan, but to also regulate the use and development of land.

- Palm Beach County FLU Generalize

-Generalized Future Land Uses of Palm Beach County

- Palm Beach County Housing Action Plan 2022
- Palm Beach County Securing Out Future Economic Mobility Report
- Palm Beach County South County Greenways and Trails Plan

Policy and Guidance

CFR_23 Parts 450 and 771 – Statewide Planning

- CFR Identified section 450 is an amendment that requires MPOs to identify how they will proceed with the implementation of the performance-based planning provisions with States and Operators of public transportation.

FDOT MPO PEA Resource Guide – 2022

- A resource guide that provides context for legislative, statutory, and policy guidance. While also identifying a variety of practices in Florida and other states to call out the Florida areas in the metropolitan transportation planning process.

FDOT PM Language Template for MPO's 2023

FDOT PM Methodology and Data Report 2023

- A technical report with the main focus being safety and data resources the DOT uses to develop performance targets.

FDOT Source book – MPO Measure Reporting.URL

- Webpage identifying mobility measures for each MPO.

FHWA Example Practices for Performance Based Planning and Programming

- A report that identifies how the Department of Transportation (DOTs) and Metropolitan Planning Organization (MOPs) are using their transportation plans.

FHWA Example Practices for performance Driven Programming

- Highlights how the Department of Transportation (DOTs) and Metropolitan Planning Organization (MOPs) are implementing performance driven programmed processes.

FHWA TPM Regulations table

- Transportation Performance Management

MetroPlan CAV Readiness- 2020

- A report that provides stakeholders with a thorough evaluation of the current preparation of local countries and cities for the exposure of CAV, as well as providing recommendations in the following steps to improve their preparation for the future.

MPOAC – FDOT TPM Consensus Planning Agreement 2022

- Report that outlines roles of FDOT, the MPOs, and public transportation providers in the planning areas for consistency purposes.

Survey Pinellas 2018

- Transportation Planning Survey

USDOT – DOE- EPA-HUB – US National Blueprint for Transportation Decarbonization

- Strategic report that outlines the future decarbonization of transportation

Web Links Summary

- AASHTO Committee on US Route Numbering
- DEP Greenway & Trail Info and Map
- FDOT Aviation System Plan
- FDOT Bike Routes Coordination (USBR)
- FDOT Bike Routes GIS Map
- FDOT Complete Streets Website
- FDOT Connected and Automated Vehicle Initiative
- FDOT Freight SUMA Freight Performance Dashboard
- FDOT FTP website
- FDOT Motor Carrier System Plan
- FDOT Preliminary Context Classification TDA
- FDOT Rail System Plan – 2035
- FDOT SIS Plans and Projects

- FDOT SUN Trail Info
- FDOT SUN Trail Maps
- FHWA Alternative Fuel Corridors – List
- FHWA Alternative Fuel Corridors – Maps
- FHWA Health in Transportation Corridor Planning Framework
- USDOE Fueling Station Maps
- USDOT National Highway Freight Network Map
- USDOT National Highway Freight Network
- FDOT – ETDM Programmatic Agreements
- FHWA Truck Freight Bottleneck Reporting Guidebook

Plans Municipal

- Greenacres
- Belle Glade
- Jupiter
- Palm Beach County

Policy and Guidance

- USDOT-DOE-EPA-HUD
- Survey Pinellas 2018
- MPOAC-FODT TPM
- Metroplan CAV Readiness
- FHWA TM
- FDOT Source Book / PM
- FDOT MPO PEA
- CFR_23 Parts 450 and 771

