



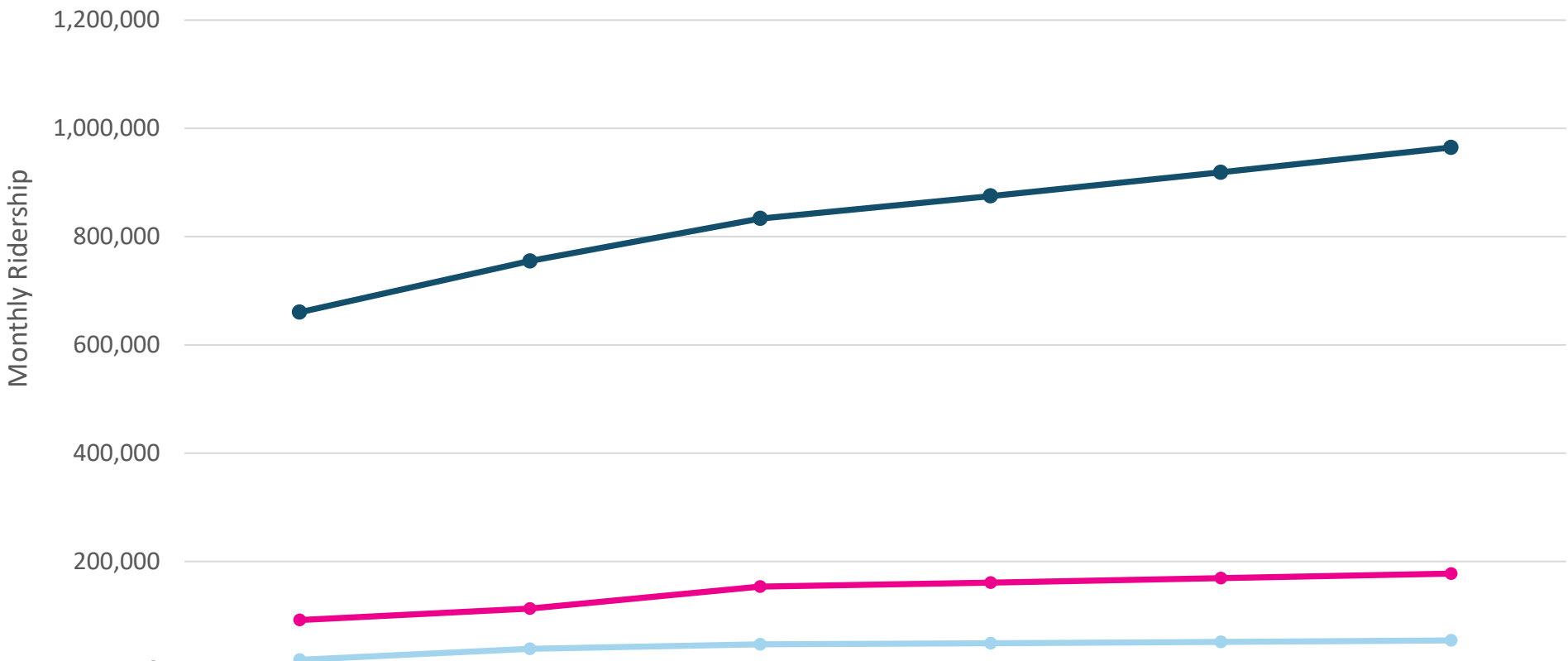
Connection and Connection Plus Guidelines

Palm Beach County TD Local Coordinated Board

February 26, 2025



Connection Ridership Trends

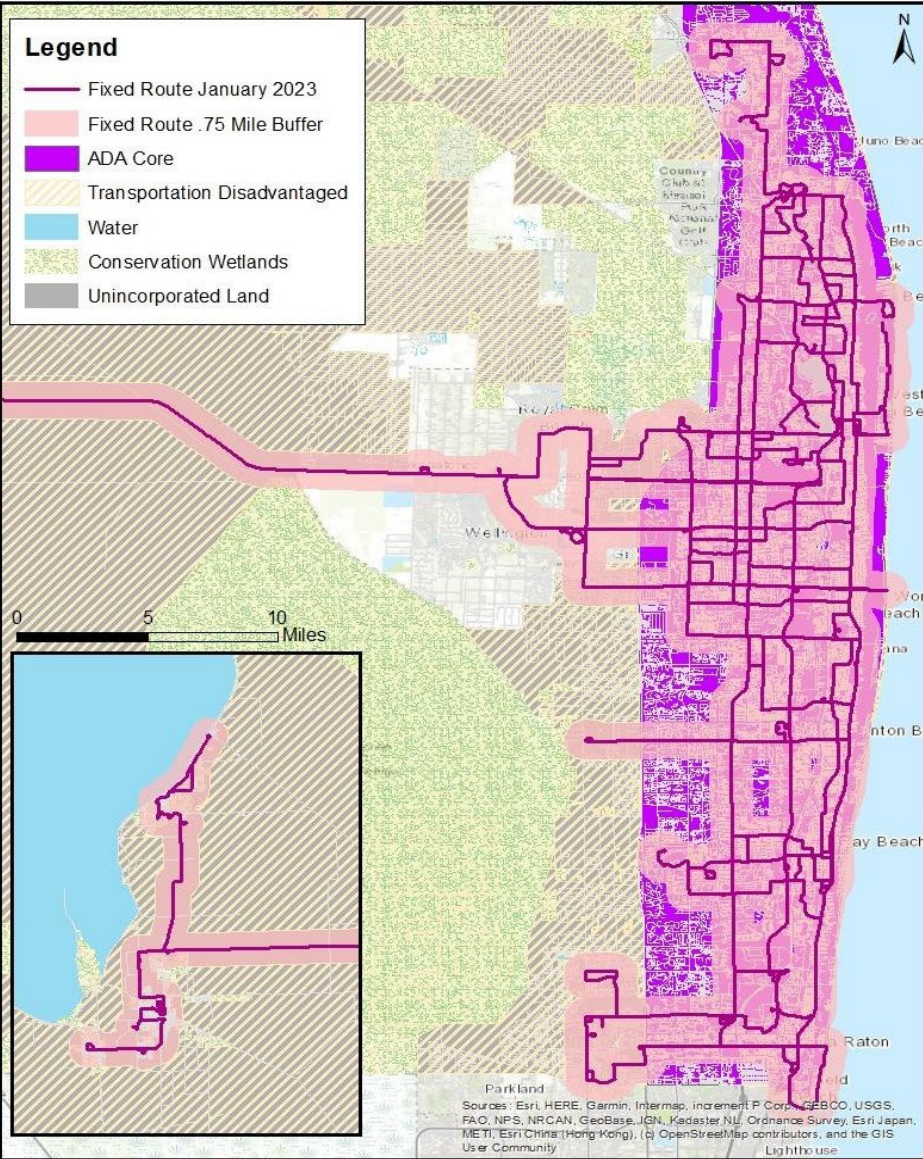


	2022	2023	2024	2025 (proj)	2026 (proj)	2027 (proj)
ADA	660,295	754,944	833,392	875,016	918,814	964,755
TD	91,812	113,095	153,424	161,096	169,150	177,608
DOSS	18,393	38,893	46,784	49,123	51,579	54,158

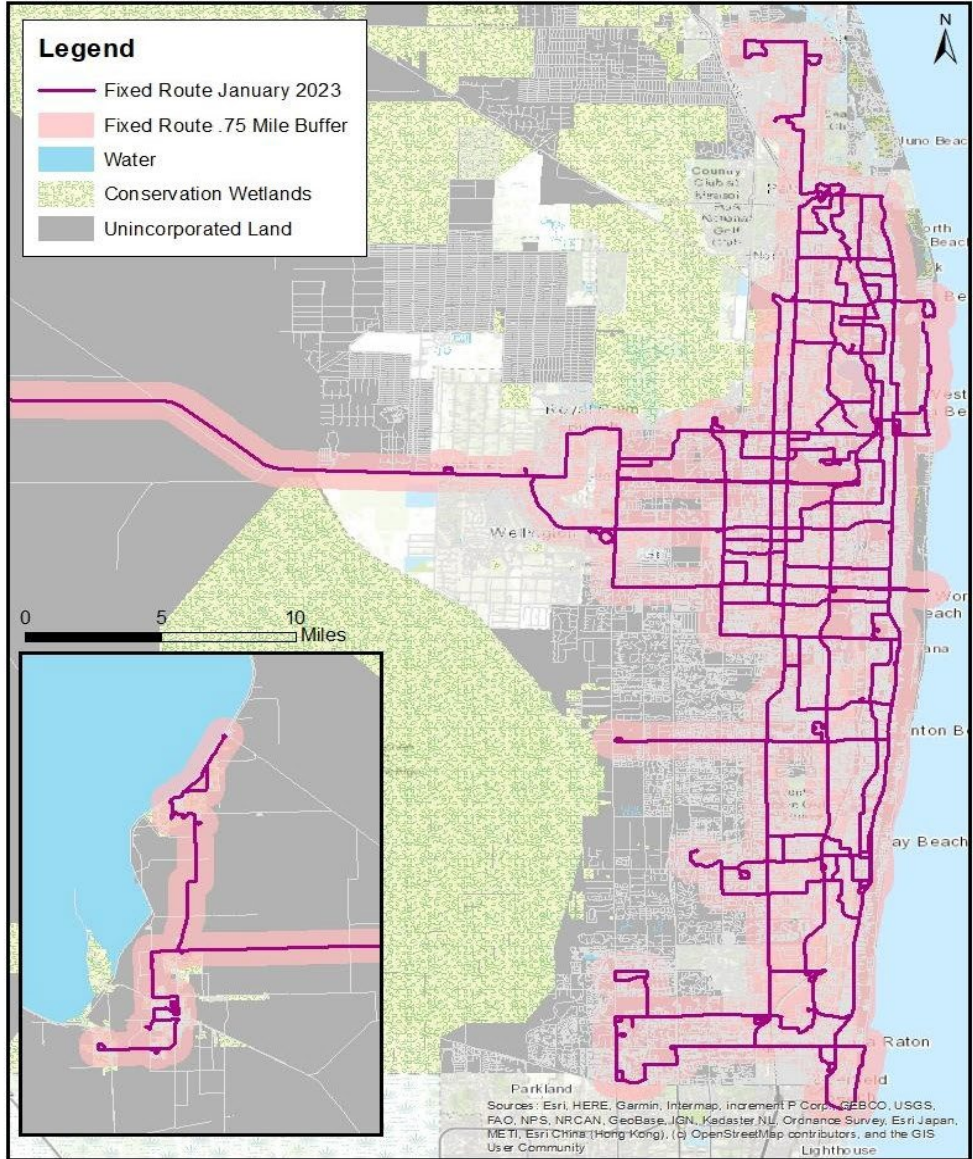
- ADA**
17,384 Eligible Riders
8,540 Annual Riders
- TD**
17,065 Eligible Riders
7,692 Annual Riders
- DOSS**
1,173 Eligible Riders
330 Annual Riders

Align ADA Service Area with FTA Guidelines

Current Area: Extended Core Area



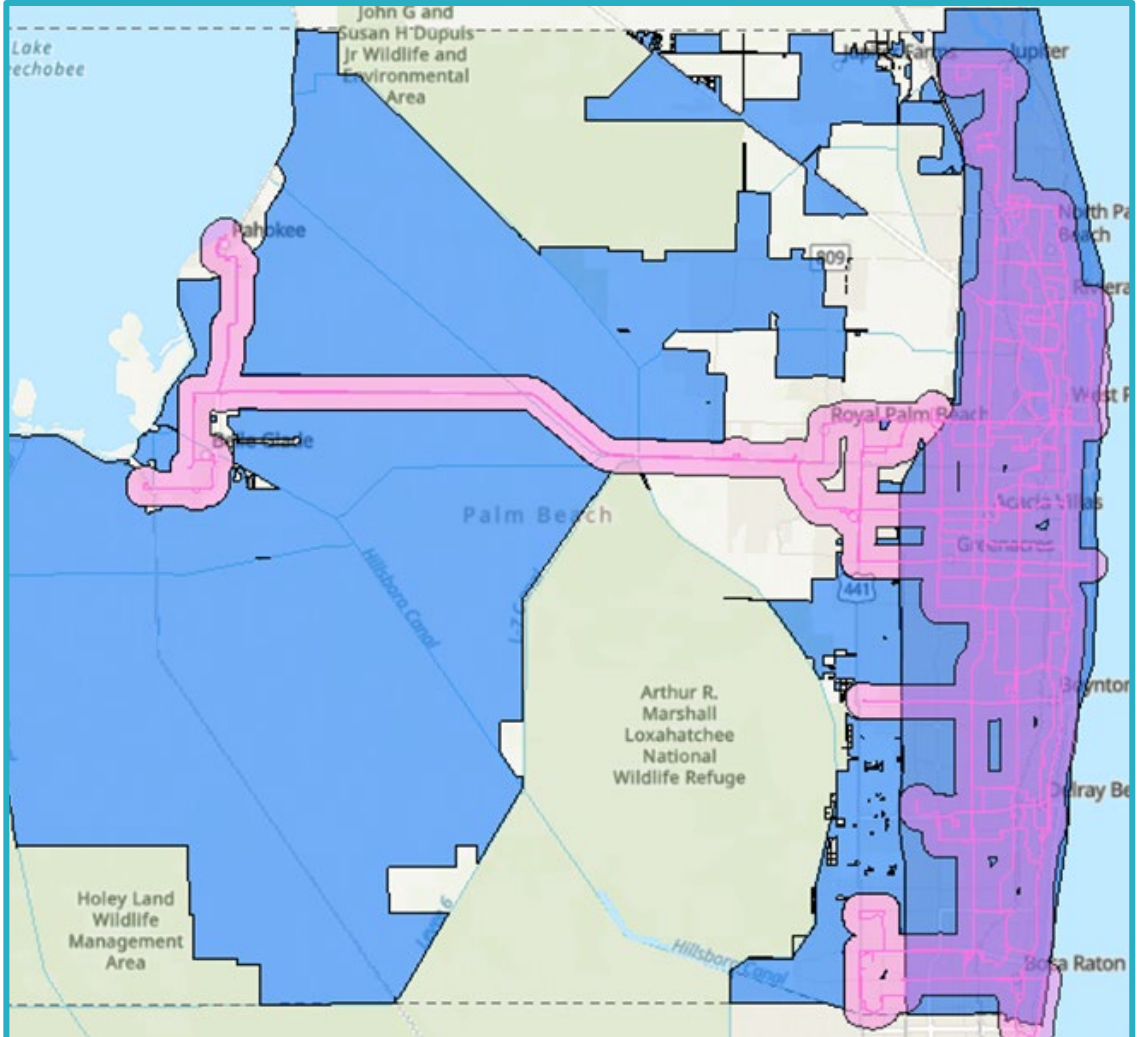
Proposed Area: Fixed-Route ¾ mile ADA Buffer



Key Components of Connection Plus Program

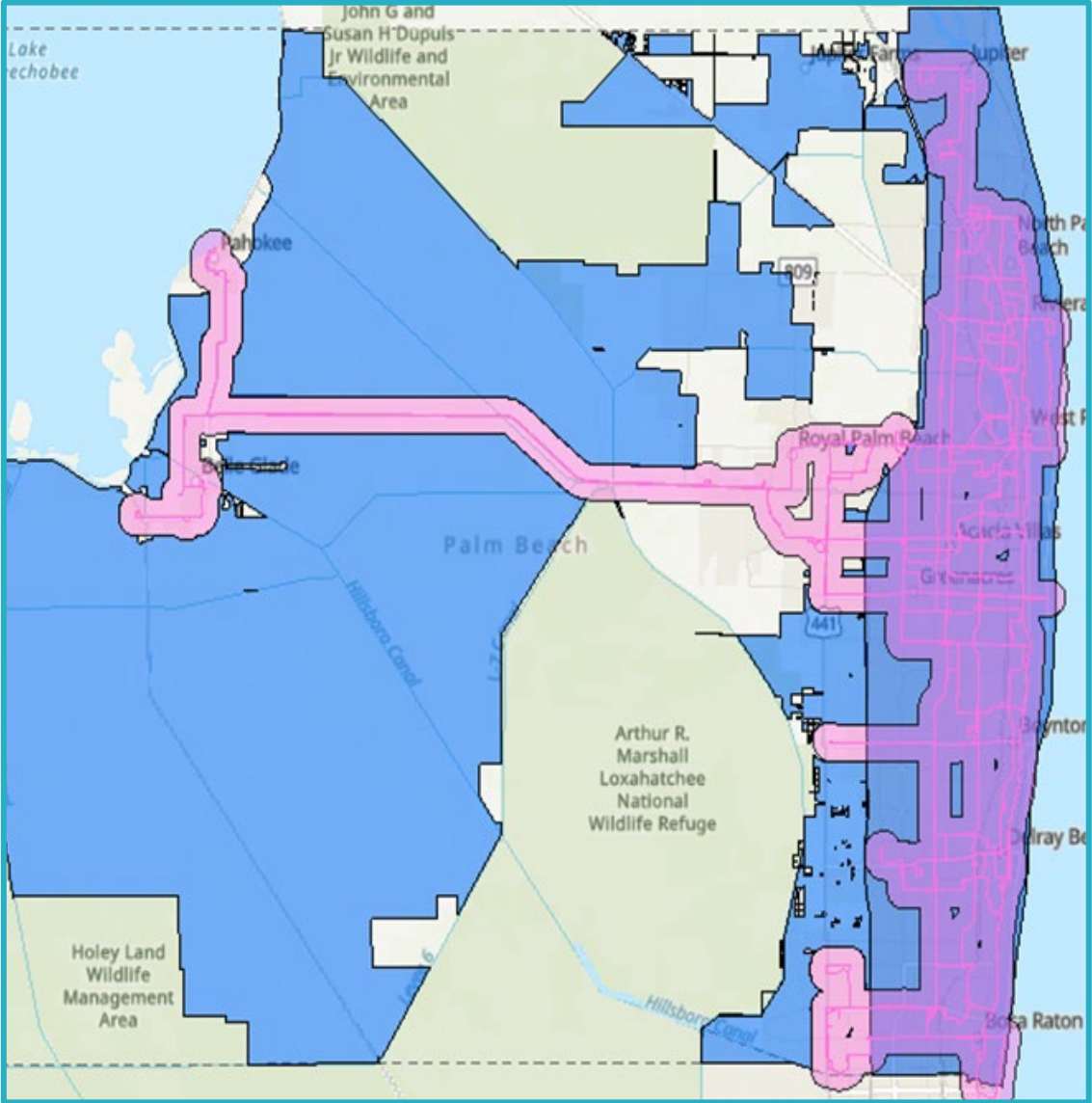
Connection Plus offers more flexibility to schedule and manage trips

- 1 Eliminates restrictions on trip negotiation resulting in more efficient grouping.
- 2 Eliminates restrictions on pick-up or drop off windows.
- 3 Eliminates time limitations for trip duration.
- 4 Trips do not have to be comparable to the fixed-route schedule.
- 5 Eliminates restrictions on fare pricing.
- 6 Allows for trip limits and prioritization.

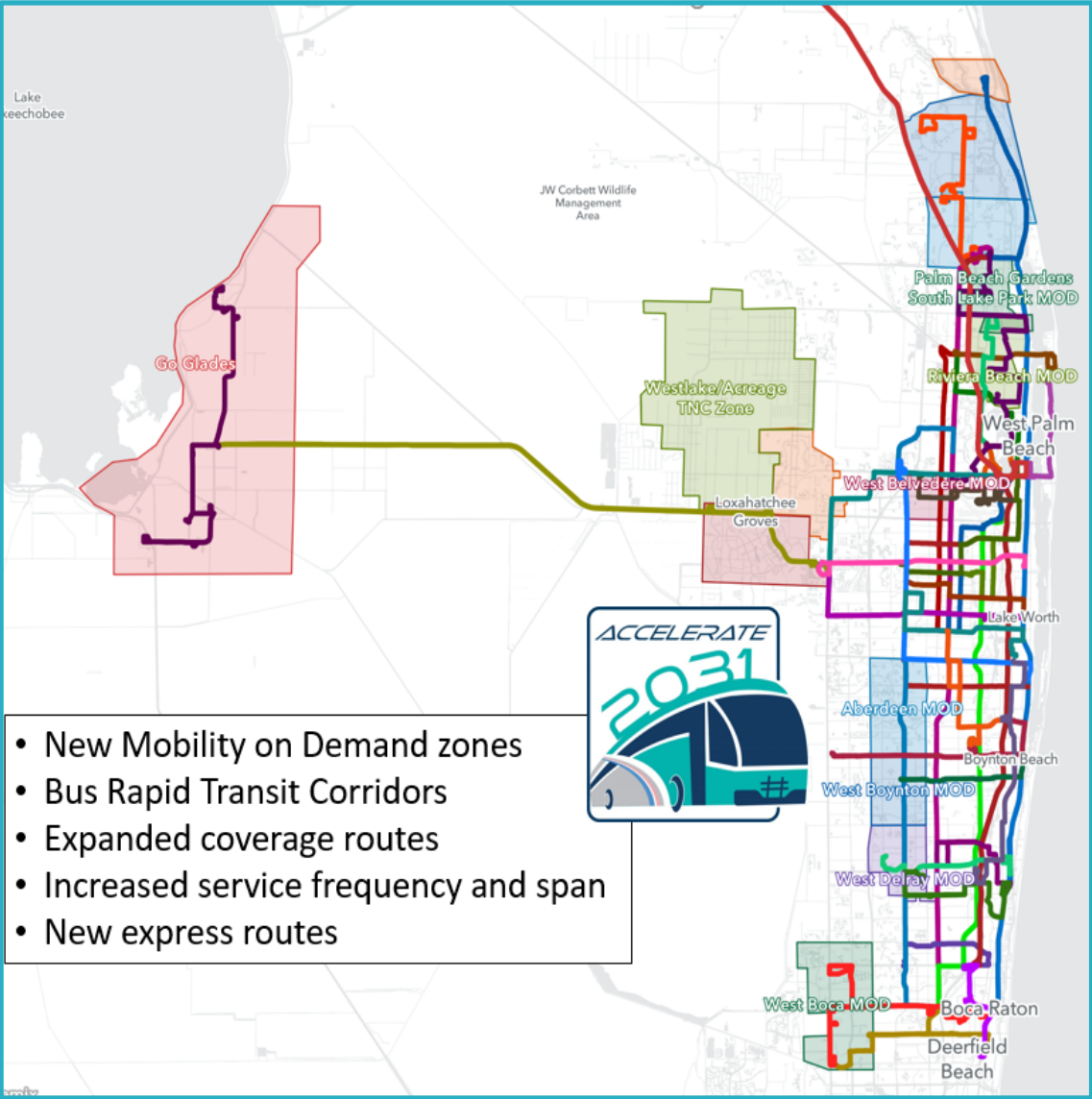


In Perspective with Future Fixed Route Network

Connection/Connection Plus



Future Fixed-Route/Mobility on Demand



Connection ADA guidelines

AMERICANS WITH DISABILITIES (ADA)

SERVICE AREA: INSIDE FIXED route network and $\frac{3}{4}$ of a mile **ON BOTH SIDES OF BUS ROUTES**

SERVICE HOURS - Same hours and time as regular bus service

ELIGIBILITY - Must have a disability, which prevents them from riding the fixed-route

CATEGORIES

PERMANENT - chronic physical, mental, or psychological disability or incapacity

TEMPORARY - limited to the duration of the person's temporary disability

VISITORS - 21 days during any 365-day period

FARES

ONE-WAY TRIP - \$4.00 (\$3.50 at or below 100% of federal poverty guidelines)

PERSONAL CARE ATTENDANTS (PCA) - fare-free with eligible rider

CHILDREN - eight (8) and under fare-free with fare-paying passenger

Connection Plus Guidelines

NON-ADA TRANSPORTATION DISADVANTAGED (TD)

Service Area - Outside the ADA service area of $\frac{3}{4}$ of a mile fixed route service

Service Hours - Same hours and time as regular bus service.

Eligibility Requirements - Low income or disability which prevents them from riding the fixed-route bus.

DIVISION OF SENIOR SERVICES (DOSS)

Service Area - Senior centers for Meal-Sites only, during pre-assigned appointment times.

Service Hours – Monday – Friday, 8am – 5pm, excluding major holidays.

Eligibility Requirements - Individuals age 60+ as established by the Older Americans Act (OAA) eligibility guidelines.

TRIP PRIORITY

Trip prioritization may occur if trip demands exceeds available funds. As adopted in TDSP.

Priority order:

1. Critical Care trips
2. Medical trips
3. Nutrition trips
4. Employment and daycare
5. Quality of life trips

Connection Plus Guidelines continued

TD TRIPS FOR DISABLED PERSONS

Door-to-Door Paratransit Transportation resembling fixed travel times.

Negotiated trips as close as possible to requested times, except when the demand on a specific times exceeds vehicles available.

FIXED ROUTE TD TRIPS

Riders who can access the fixed route bus network must use the fixed route system.

Riders travelling beyond the $\frac{3}{4}$ mile ADA area will be transported to or from the closest bus stop.

May purchase discounted 31-day bus pass for \$15.00 or \$20.00 based on income instead of the \$70.00 regular price.

TD TRIP FARES

Door-to-door trips, or trips to or from a fixed route, are based on travel distance:

\$4.00 each way

(\$3.50 at or below 100 % of federal poverty guidelines)



THANK YOU!

