

Transportation Disadvantaged Service Plan (TDSP)

FY 2026 Annual Update




Agenda item 2.D
AUGUST 27, 2025



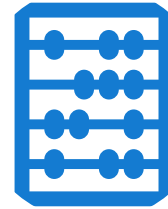
PALM BEACH
Transportation
Planning Agency



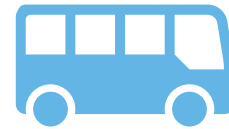
Partner Roles

	 Commission for Transportation Disadvantaged	 Designated Official Planning Agency	 Community Transportation Coordinator	Local Coordinating Board
Acronym	CTD	DOPA	CTC	LCB
Purpose	Provides final review of TDSP	Updates the TDSP Annually	Provides Data and Coordination of TDSP related elements	Approves the TDSP

TDSP Key Components



Development Plan



Service Plan



Quality Assurance

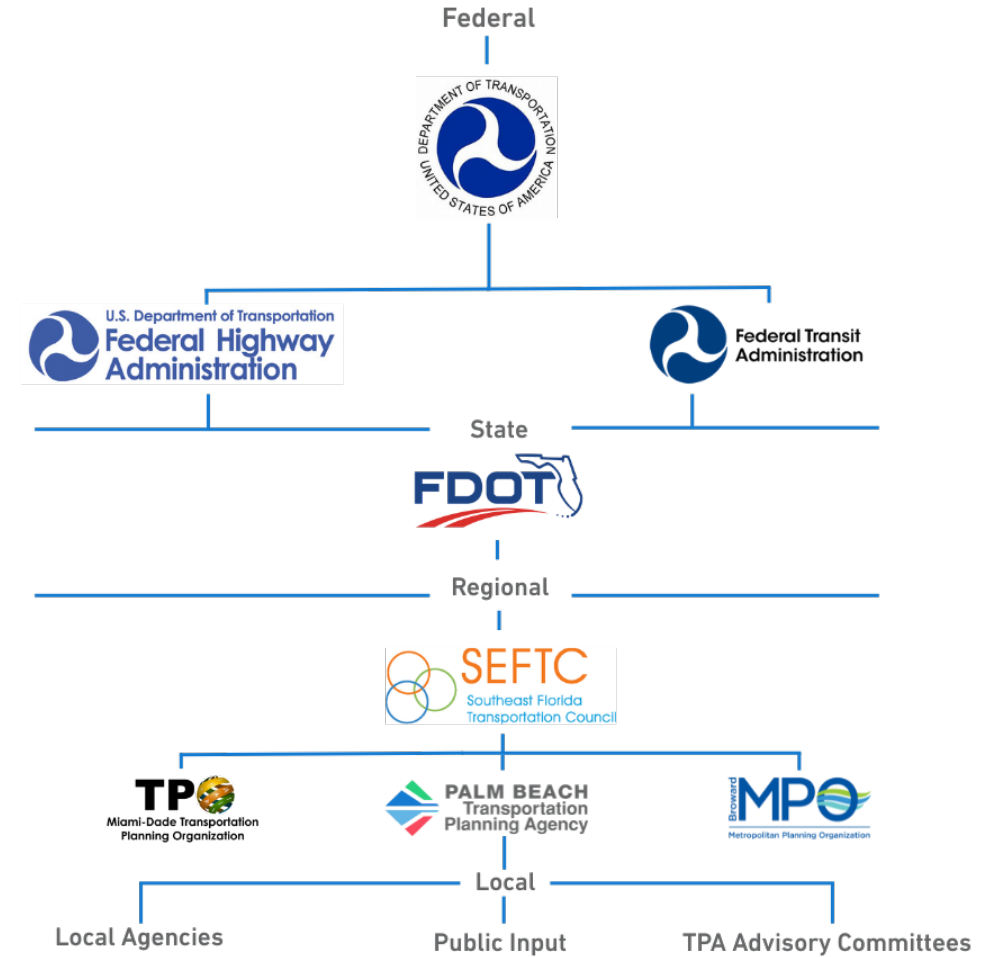
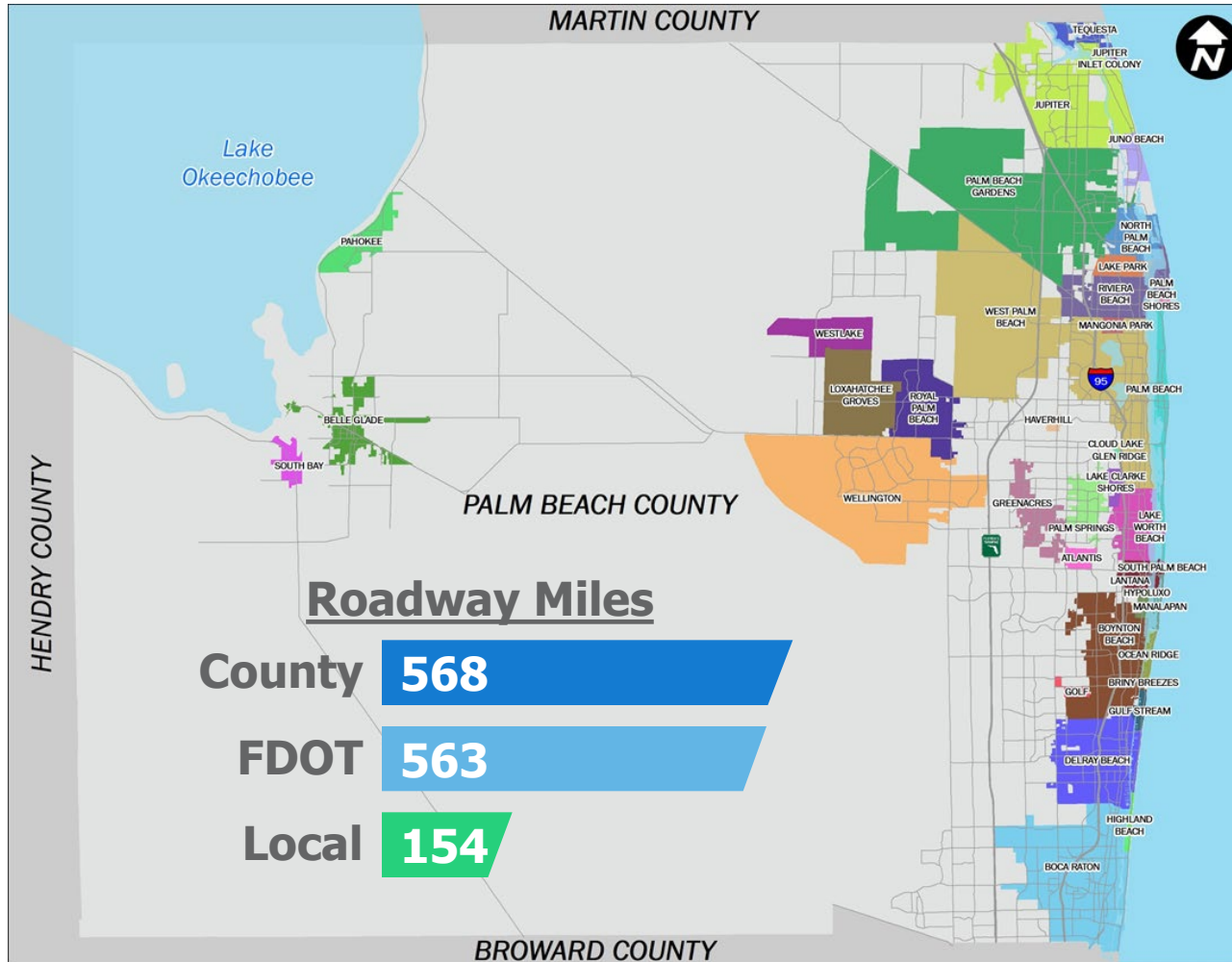
Major Updates in FY 23 and 28



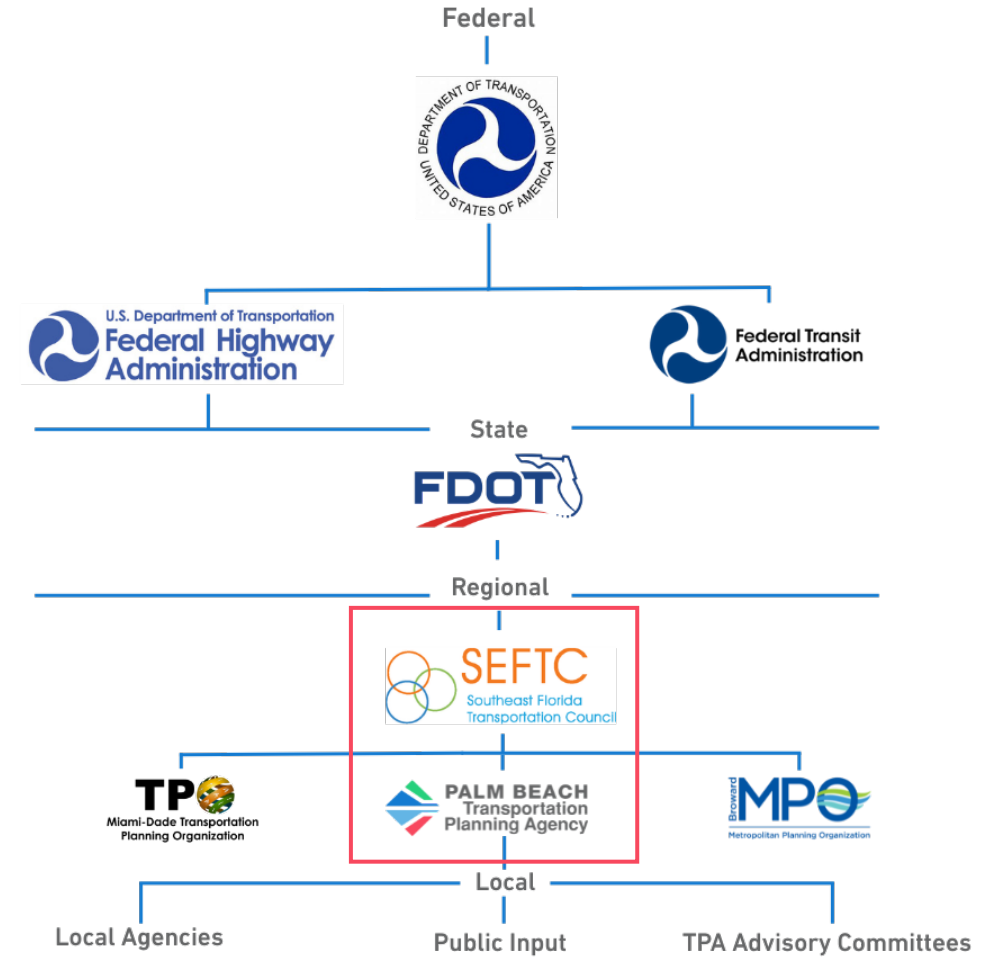
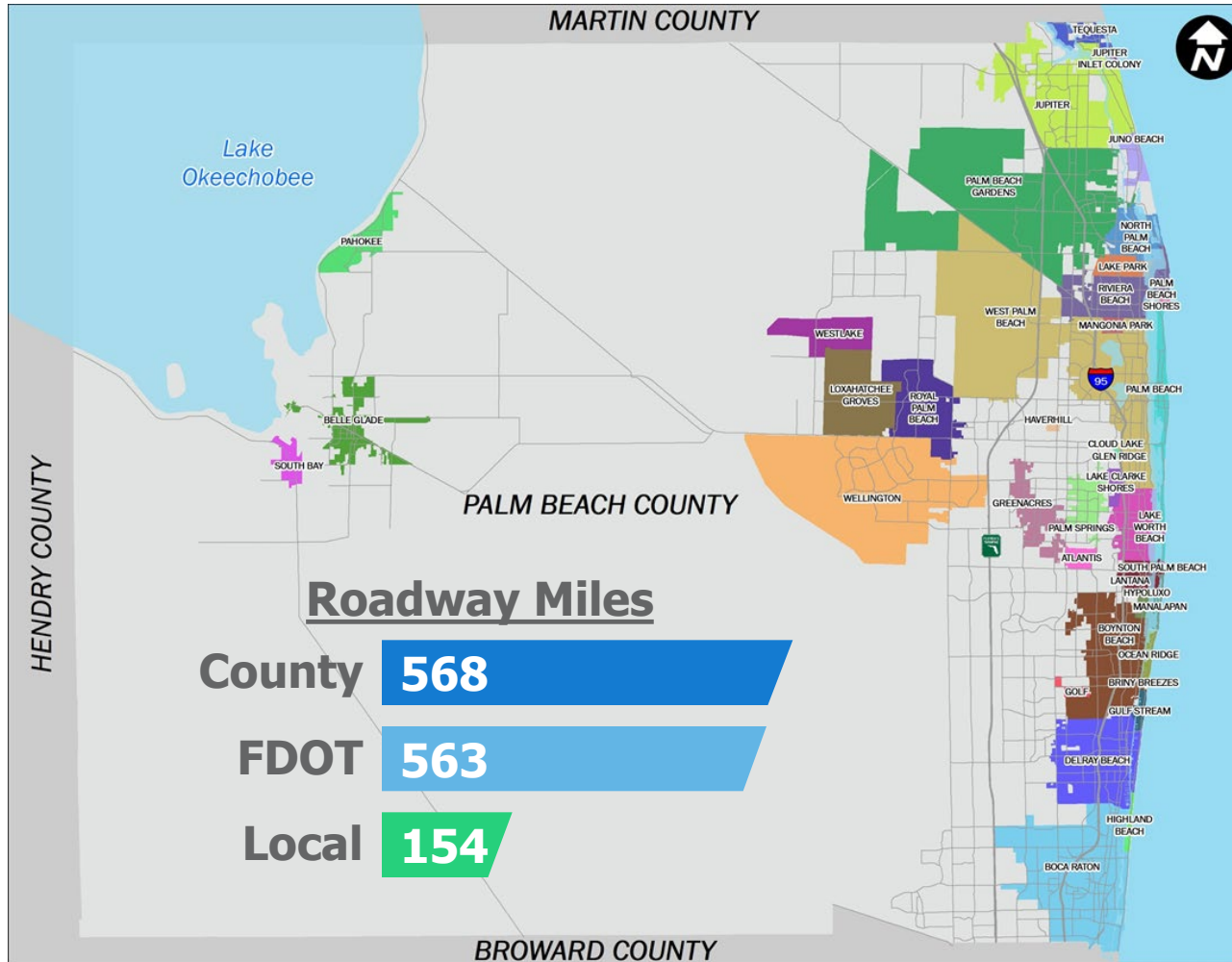
Development Plan



Our Partners



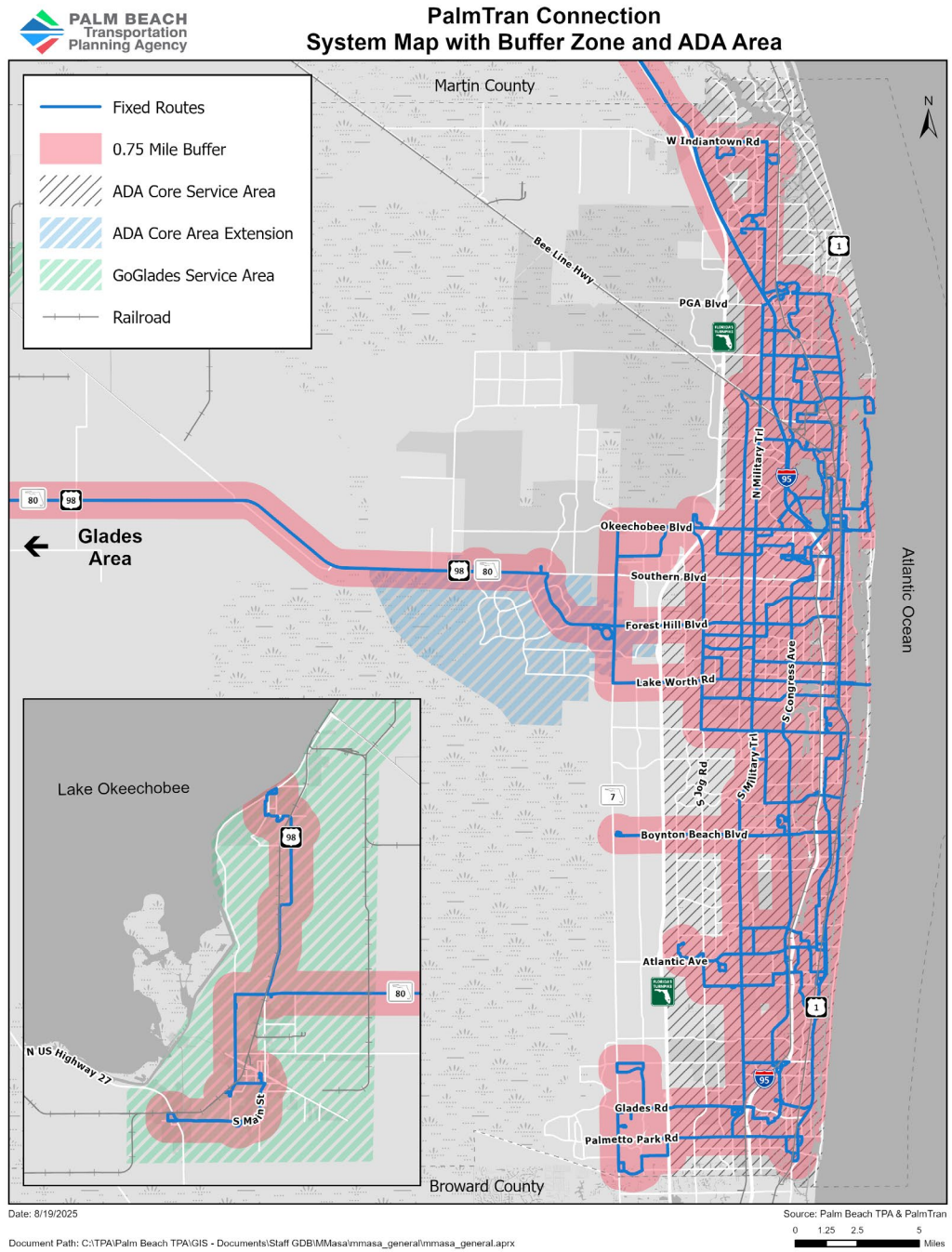
Plan Updates





Top Origin / Destinations

- 1. West Palm Beach
- 2. Lake Worth Beach (and unincorporated area)
- 3. Boca Raton
- 4. Boynton Beach
- 5. Delray Beach



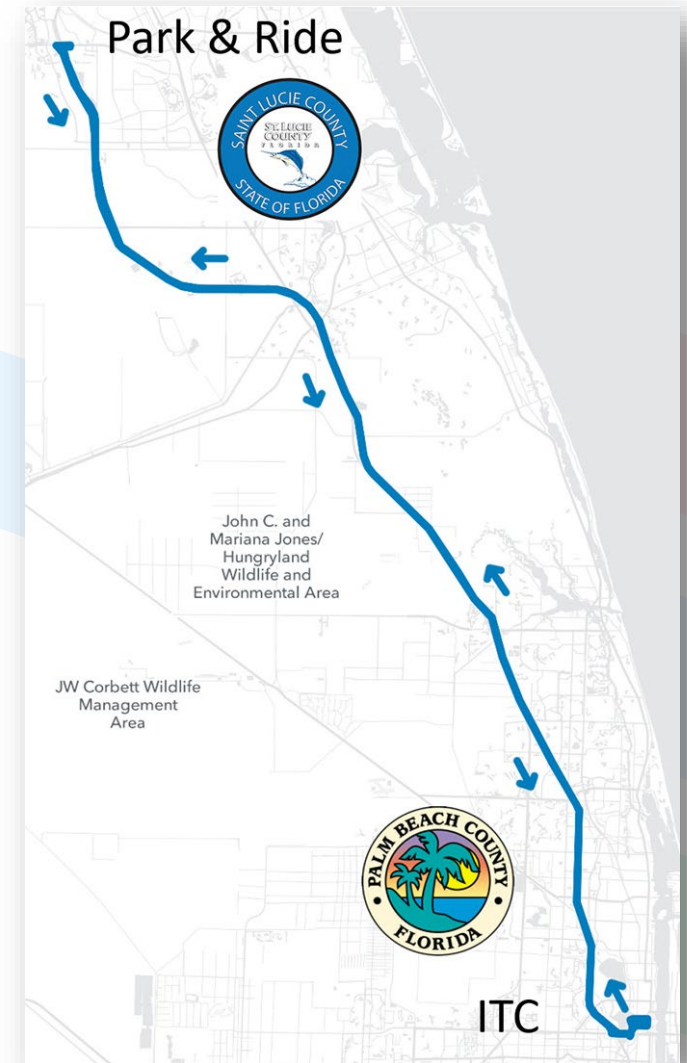


Service Plan

Connection Services

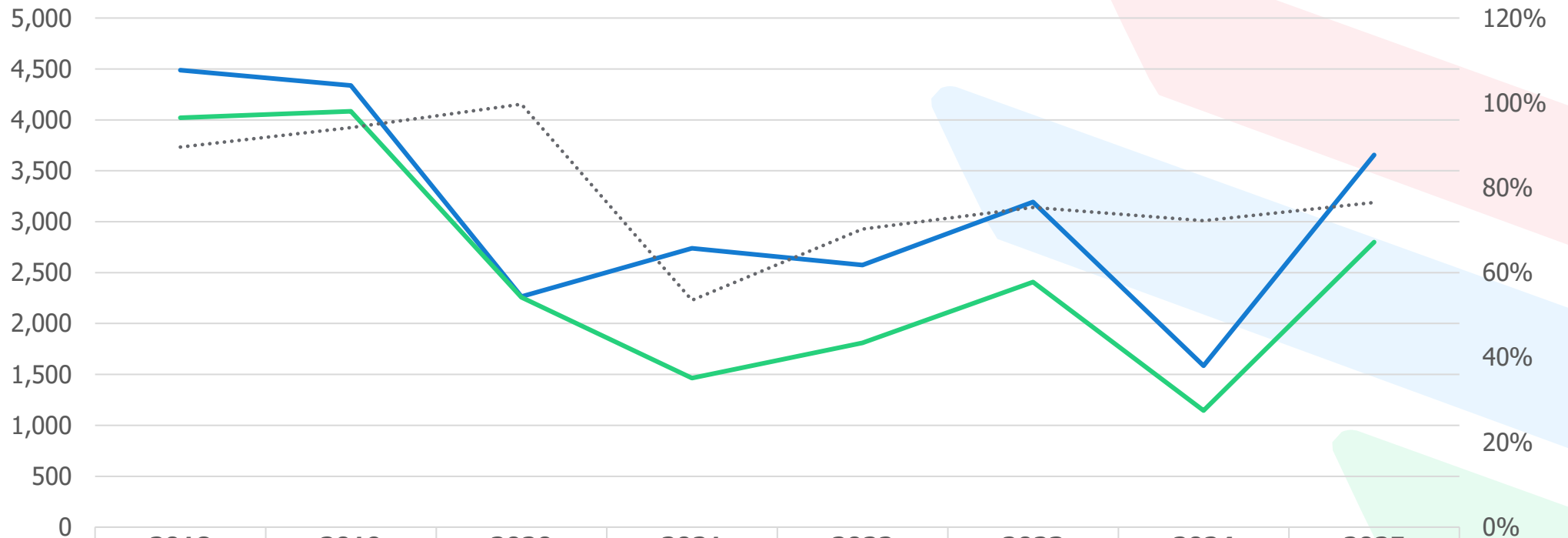


UZURV®



Historic Approvals

Annual Client Approvals for TD Service
Post Screening Process Implementation



	2018	2019	2020	2021	2022	2023	2024	2025
Applied	4,488	4,337	2,264	2,739	2,574	3,194	1,585	3,655
Approved	4,021	4,084	2,257	1,465	1,809	2,407	1,145	2,798
Approval Rate (%)	90%	94%	100%	53%	70%	75%	72%	77%

Applied Approved Approval Rate (%)

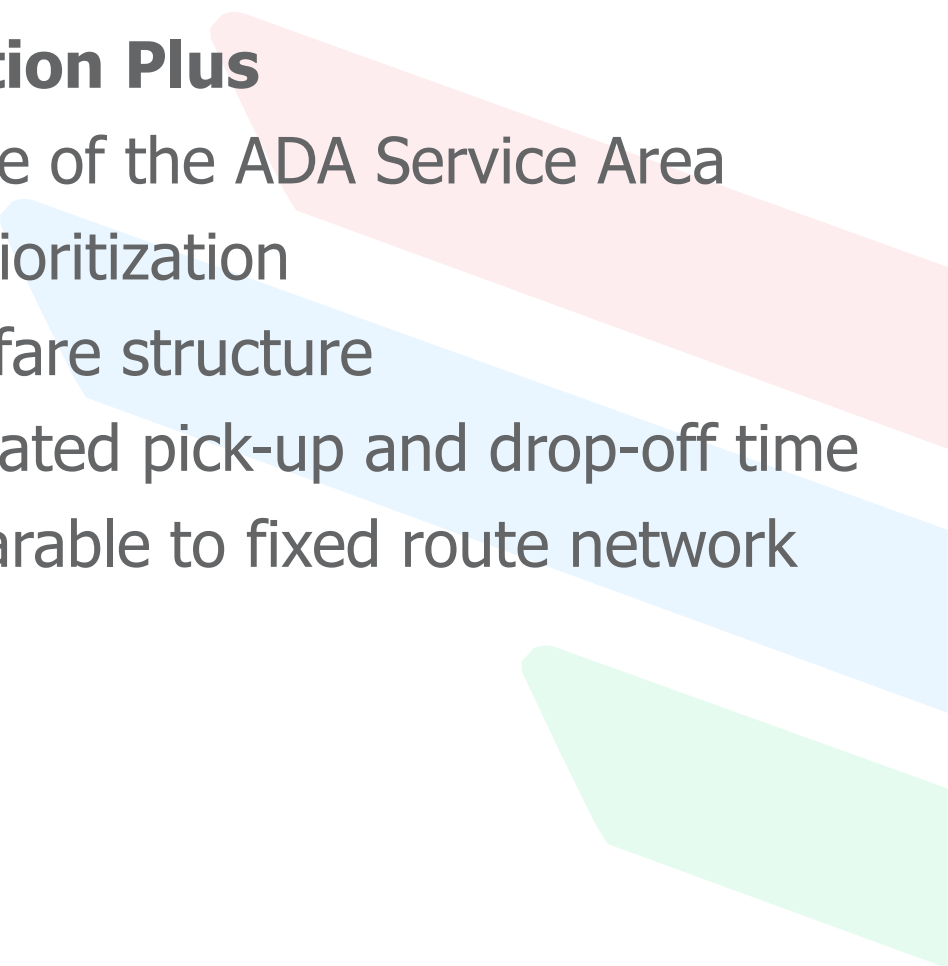


January 1 Service Changes

Connection

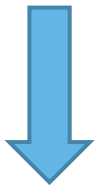
- ¾ Mile Buffer for Typical Palm Tran Connection Service
- Personal Care Attendants
- Eligibility Periods (Permanent, acute)
- Visitor Documentation
- Fare Updates

Connection Plus

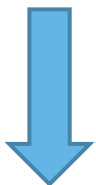
- Outside of the ADA Service Area
 - Trip Prioritization
 - Same fare structure
 - Negotiated pick-up and drop-off time
 - Comparable to fixed route network
- 

Next Steps

LCB Approval





TPA submittal to CTD



**Next Annual Update
Fall 2026**





Motion to Approve the TDSP Annual Update



PALM BEACH
Transportation
Planning Agency



PALM BEACH
Transportation
Planning Agency