

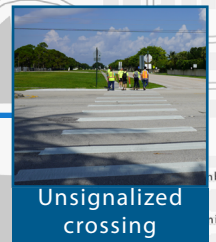
WALK BIKE SAFETY AUDIT






Whispering Pines Elementary School

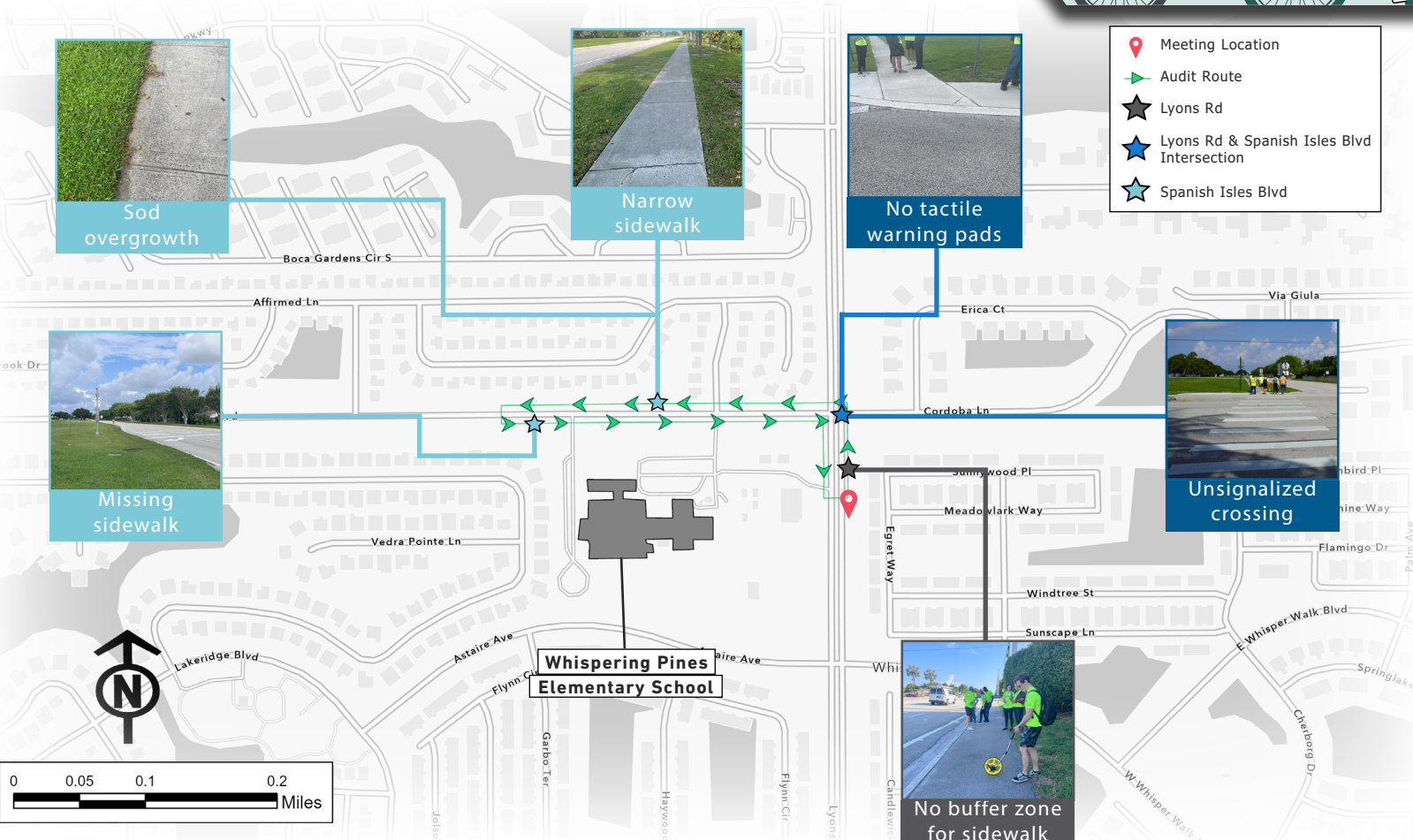
Date Conducted: June 9, 2023

Location: Unincorporated Palm Beach County, FL

The Palm Beach TPA conducted a Walk Bike Safety Audit to improve the walking and biking conditions of Whispering Pines Elementary School along Lyons Rd and Spanish Isles Blvd. The audit was conducted in collaboration with the City of Boca Raton and Palm Beach County to improve safety and access for people of all ages and abilities.



-  Meeting Location
-  Audit Route
-  Lyons Rd
-  Lyons Rd & Spanish Isles Blvd Intersection
-  Spanish Isles Blvd



POTENTIAL SOLUTIONS TO CONSIDER



The table below illustrates a range of Short-Term (1-3 Yrs), Mid-Term (3-7 Yrs), and Long-Term (7+ Yrs) recommendations identified by the Walk Bike Safety Audit participants. For more information, and to view an interactive map with all the walk bike audit findings, visit: PalmBeachTPA.org/Audit.

Lyons Rd Roadway Owner: Palm Beach County	Time Frame
<ul style="list-style-type: none"> Narrow travel lanes, widen sidewalks to shared-use paths, and add landscape buffer. Repair sidewalks and upgrade to ADA standards. 	Short to Mid-Term
<ul style="list-style-type: none"> Add pedestrian scale lighting throughout the corridor where feasible. 	Mid-Term
Lyons Rd and Spanish Isles Blvd Intersection Roadway Owner: Palm Beach County	
<ul style="list-style-type: none"> Upgrade school crossing signs to meet current Manual on Uniform Traffic Control Devices (MUTCD) standards. 	Short-Term
<ul style="list-style-type: none"> Add pedestrian refuge island with Pedestrian Hybrid Beacons (PHBs), pedestrian countdown signals and advance STOP/YIELD signs and markings. Add high-visibility pedestrian crosswalks on all four unsignalized intersection legs, create ADA curb ramps, and tactile warning pads. 	Short to Mid-Term
<ul style="list-style-type: none"> Add pedestrian scale lighting at intersections to illuminate pedestrians/bicyclists during low light conditions. 	Mid-Term
<ul style="list-style-type: none"> Evaluate necessity of west and east bound turning lanes to reduce the long crossing distance. 	Long-Term
Spanish Isles Blvd Roadway Owner: Palm Beach County	
<ul style="list-style-type: none"> Maintain trees on a more regular basis. 	Short-Term
<ul style="list-style-type: none"> Add shared-use path along the south side of Spanish Isles Blvd. Repair and widen sidewalk, and upgrade to ADA standards. 	Short to Mid-Term
<ul style="list-style-type: none"> Add pedestrian scale lighting throughout the corridor where feasible. 	Mid-Term

