



Lessons Learned for Implementation Grants

Paola Baez, P.E., Chief of Multimodal Development
Section, Miami-Dade County



DTPW VISION ZERO SAFE STREETS FOR ALL APPLICATION

April 4, 2024

PRESENTED BY
MIAMI-DADE COUNTY DEPARTMENT OF
TRANSPORTATION AND PUBLIC WORKS (DTPW)

PRESENTED TO
PALM BEACH TRANSPORTATION
PLANNING AGENCY (TPA)

Agenda

- **Miami-Dade County Vision Zero Program**
- **2024 Vision Zero Action Plan (VZAP)**
- **Safe Streets and Roads for All (SS4A) Grant**
- **Q&A**



Program Goal & Mission

Vision Zero

Vision Zero is a strategy to eliminate all traffic fatalities and severe injuries, while increasing safe, healthy, equitable mobility for all.

Previous Efforts

2016 Complete Streets
Design Guidelines
2018 TPO Vision Zero Plan
2021 MDC Vision Zero
Framework Plan

Partnership & Coordination
with FHWA, FDOT

Vision Zero Action Plan

A proactive multimodal transportation safety initiative that prioritizes **equity and data**

Refines strategies from the **2021 Vision Zero Framework Plan** to determine the highest-priority locations to address

Establishes the county's **High Injury Network (HIN)**, **Key Action Commitments (KACs)** & **Key Performance Indicators (KPIs)**

2024
MIAMI-DADE COUNTY
**VISION ZERO
ACTION PLAN**



March 2024

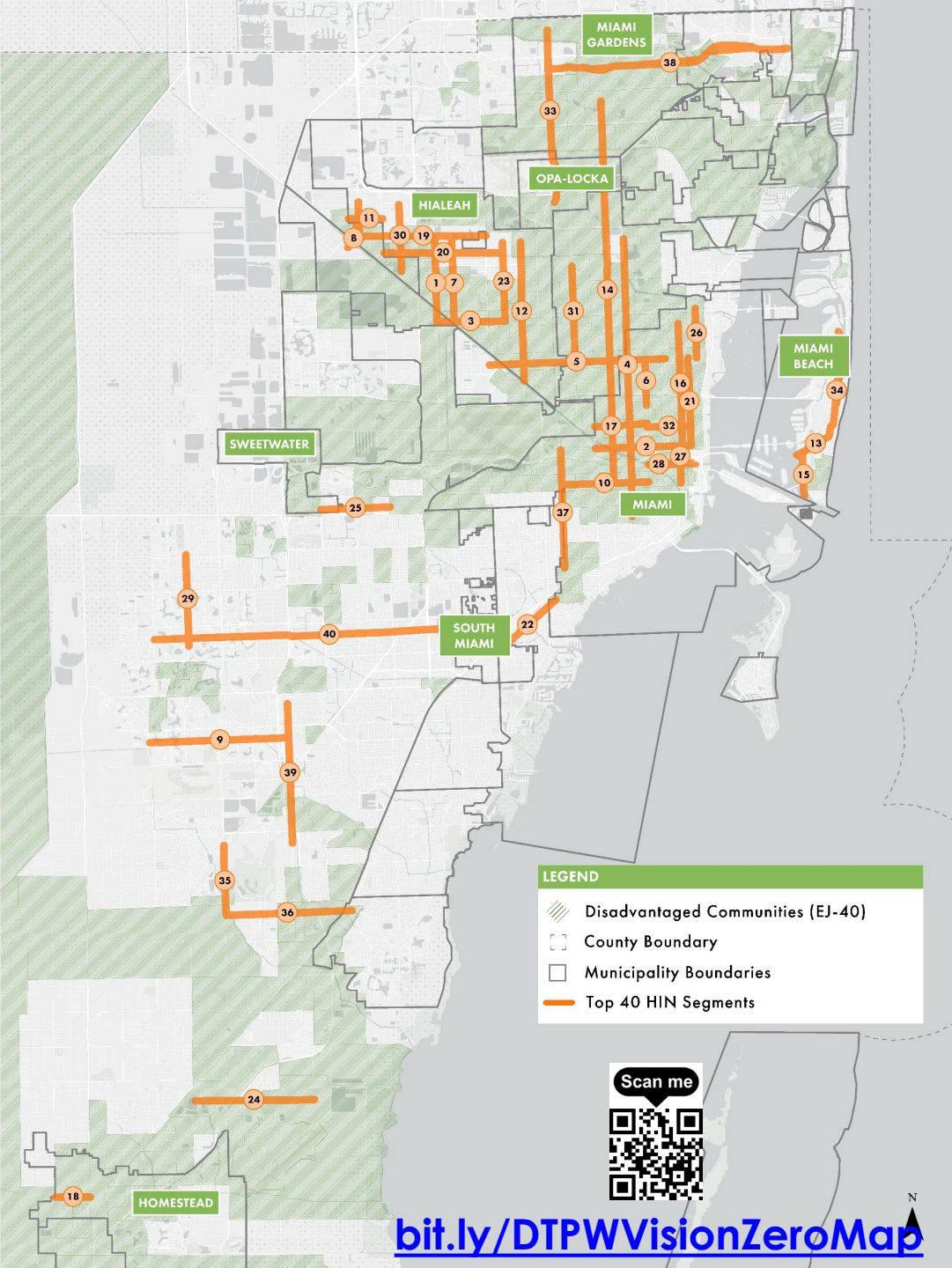
Plan published online



High-Injury Network (HIN)

DTPW's High Injury Network (HIN)

- HIN Development Methodology:
 - Excludes FDOT roads
 - Prioritizes vulnerable road users
- 2018-2022 fatal & serious injury crashes
 - 7,314 crashes on all roads
 - 2,505 (34%) on all County/Municipal roads
- **40 corridors account for approximately 31% of the 2,505 crashes in 1.5% of the total County/Municipal centerline miles**
- 62% of overall HIN segment mileage is within an equity area



Vision Zero Action Plan: Taking Action

Key Action Commitments (KACs)

Policy and program driven strategic commitments to advance Vision Zero.

Key Performance Indicators (KPIs)

Trackable indicators for measuring progress towards Vision Zero goals.

Organized into 5 themes (focus areas) to help prioritize related efforts:

1. Enhance City Processes and Collaboration
2. Build Safe Streets for Everyone
3. Create Safe Speeds
4. Promote a Culture of Safety
5. Improve Data and Be Transparent

Crash Stats by Municipality: KSI Contributing Factors

Municipality ²	Total Crashes	Aggressive Driving KSI Involved %	Alcohol-Related KSI Involved %	Drug-Related KSI Involved %	Speeding KSI Involved %	Aging Driver KSI Involved %	Teenage Driver KSI Involved %	Distracted Driver KSI Involved %
Overall Miami-Dade County	2505	7.6%	3.6%	1.0%	4.1%	18.5%	11.8%	6.9%
Aventura	17	5.9%	5.9%	0.0%	5.9%	29.4%	11.8%	23.5%
Bay Harbor Islands	2	0.0%	50.0%	0.0%	0.0%	0.0%	0.0%	0.0%
Coral Gables	79	2.5%	6.3%	1.3%	1.3%	22.8%	10.1%	24.1%
Doral	41	4.9%	2.4%	2.4%	4.9%	2.4%	12.2%	7.3%
El Portal	1	0.0%	0.0%	0.0%	0.0%	0.0%	0.0%	0.0%
Florida City	30	13.3%	6.7%	0.0%	3.3%	6.7%	23.3%	6.7%
Golden Beach	1	0.0%	0.0%	0.0%	0.0%	0.0%	0.0%	100.0%
Hialeah	309	4.5%	2.6%	1.3%	3.2%	26.9%	12.0%	1.6%
Hialeah Gardens	15	13.3%	6.7%	0.0%	13.3%	20.0%	6.7%	6.7%
Homestead	48	10.4%	2.1%	0.0%	8.3%	14.6%	20.8%	10.4%
Key Biscayne	2	0.0%	0.0%	0.0%	0.0%	0.0%	0.0%	50.0%
Medley	15	6.7%	0.0%	0.0%	6.7%	13.3%	0.0%	20.0%
Miami	486	5.6%	2.7%	0.8%	2.5%	11.7%	7.4%	2.9%
Miami Beach	108	8.3%	6.5%	0.0%	5.6%	11.1%	1.9%	10.2%
Miami Gardens	124	25.8%	1.6%	1.6%	16.9%	12.1%	12.9%	14.5%
Miami Lakes	2	50.0%	0.0%	0.0%	50.0%	0.0%	50.0%	0.0%
Miami Shores	8	12.5%	0.0%	0.0%	12.5%	12.5%	0.0%	0.0%
Miami Springs	9	11.1%	0.0%	0.0%	11.1%	44.4%	22.2%	0.0%
North Miami	20	5.0%	10.0%	0.0%	5.0%	15.0%	10.0%	0.0%

Killed or Serious Injury (KSI) Involved Crash Percentage is Higher¹ than Overall Miami-Dade County Percentage

¹ Percentages are rounded to the nearest whole number; values higher than the overall Miami-Dade County rate pre-rounding were highlighted in red.

² Crashes attributed to Unincorporated Miami-Dade County and those where the police report was blank or incomplete were not included in this analysis.

Miami-Dade County Successful Grant Applications

- **FY 2023 SS4A Implementation Grant: \$16.2 M**

- 24 Implementation Projects
- 6 Supplemental Planning Projects
- 9 Demonstration Projects
- Joint Application
 - DTPW submitted with the Miami-Dade TPO, City of Hialeah, City of Miami

- **Road to Zero Coalition Traffic Safety Grant: \$150,000**

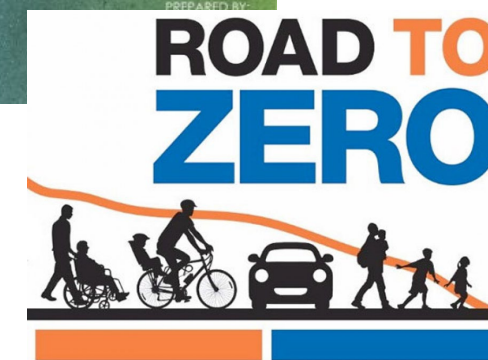
- Community Liaison Pilot Program
- Vision Zero Data Dashboard

- **Highway Safety Improvements Program (HSIP): \$TBD**

- 2 Implementation Projects

- **Community Project Funding Congressional Earmark Award: \$3M**

- 1 Implementation Project



Upcoming Efforts: Road to Zero Grant

Vision Zero Data Dashboard

- **Online Tool Fostering Data Transparency**

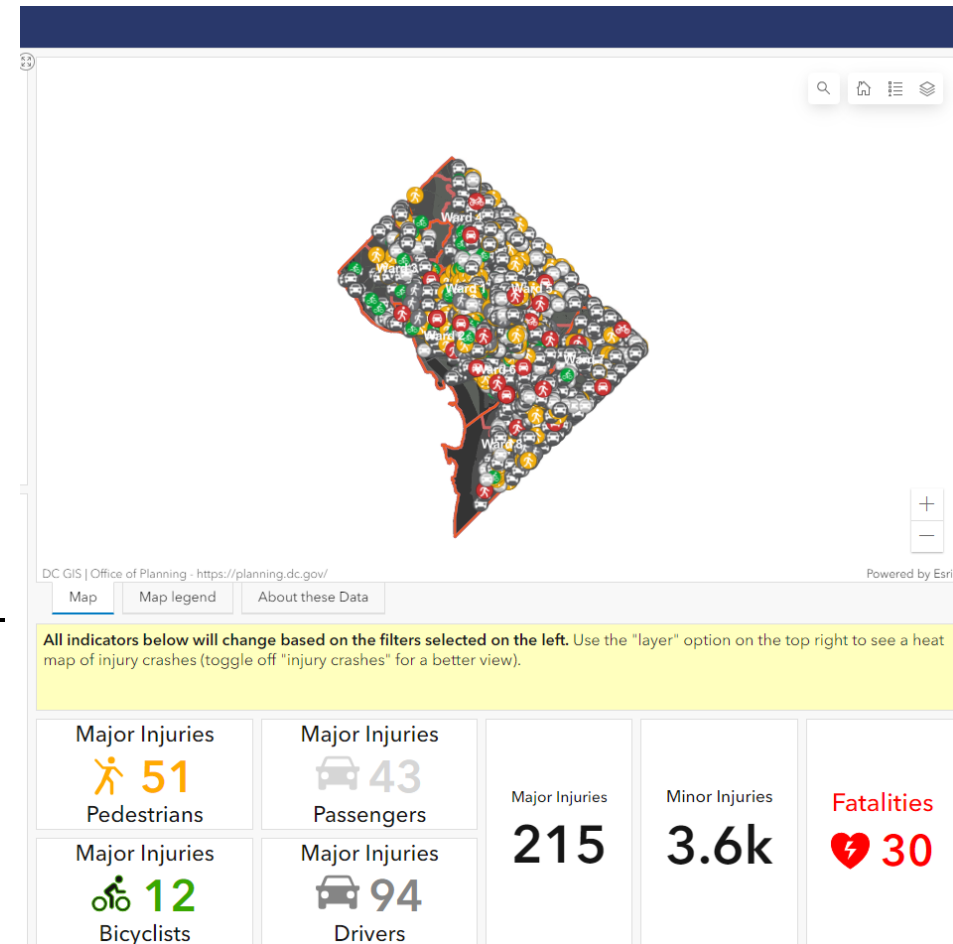
- ESRI GIS map-based tool
- Built based on research of peer cities/counties

- **Functionality**

- Displays crash data metrics
- Notes Vision Zero benchmarks, metrics & progress-to-date

- **Maintenance & Upkeep**

- Will establish schedule for regularly updating data
- Includes staff training



Upcoming Efforts: Road to Zero Grant

Community Liaison Program Pilot

- **Focused on Overtown and West Kendall**

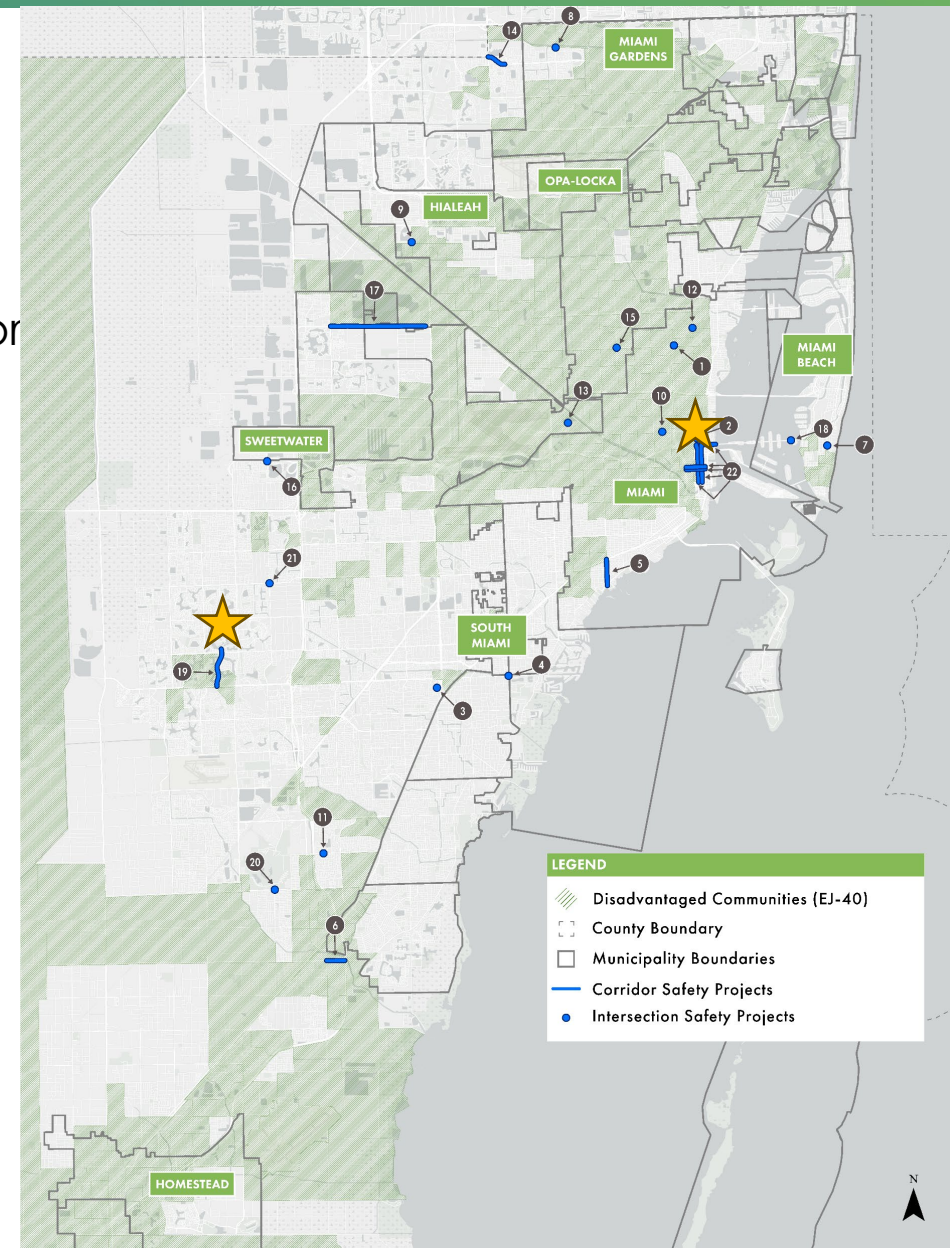
- Equity priority locations
- Locations where Vision Zero/NACTO projects were recently or are soon to be installed

- **Trusted Community Liaisons Conduct Outreach**

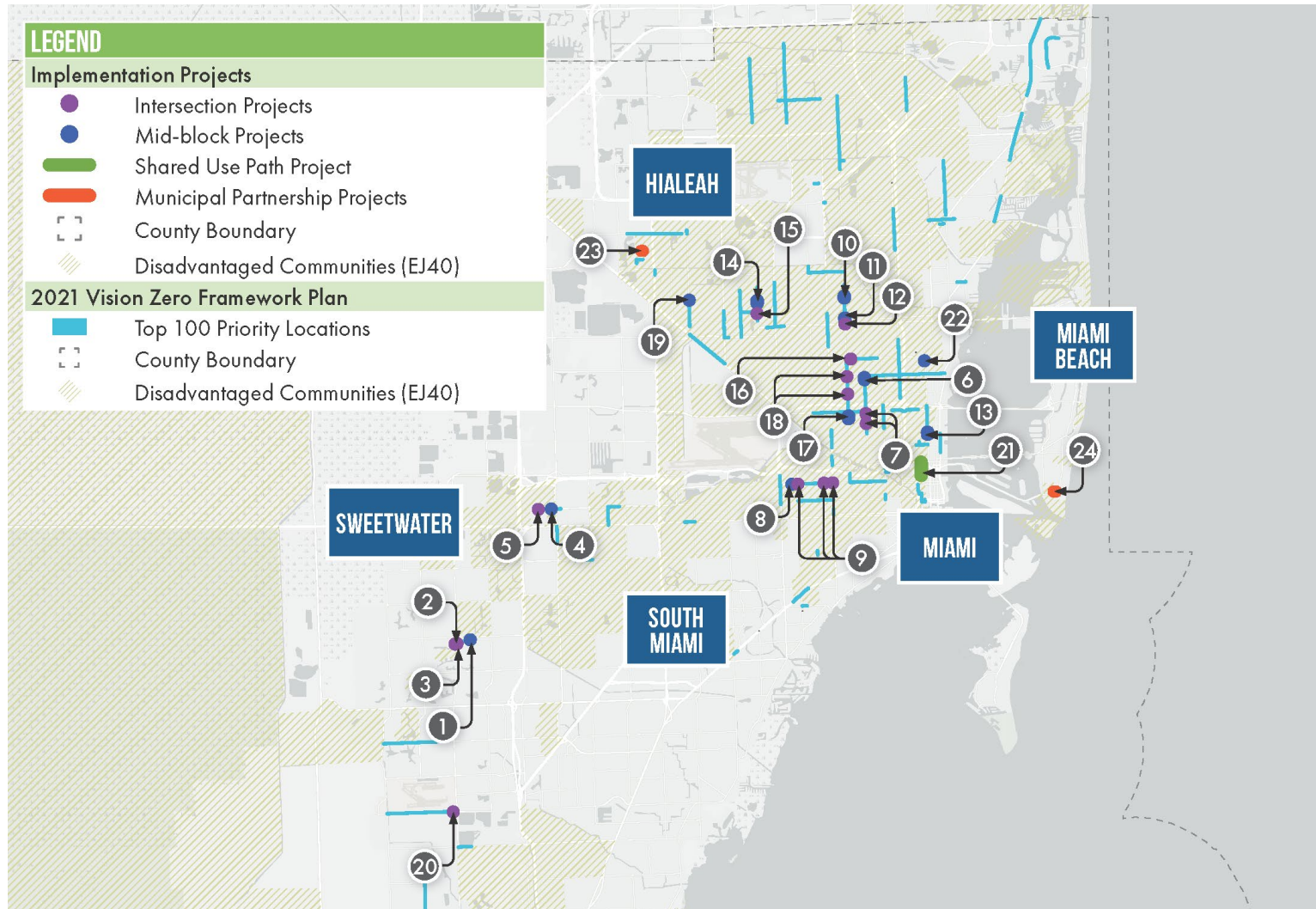
- 4 liaisons to be recruited from Community-Based Organizations
- Compensated for their time spent in training/de-brief meetings, conducting outreach, vehicle mileage

- **Focused on Education & Feedback Gathering**

- Online/printed surveys developed
- Area residents offer feedback on recently installed safety projects
- Informs DTPW's before and after studies/post-construction evaluation



MDC SS4A Grant: Implementation Projects



IMPLEMENTATION PROJECTS	
Project Number	Location/Intersection
1	SW 59 Street and SW 133 Avenue
2	SW 59 Street and SW 137 Court
3	SW 59 Street and SW 137 Avenue
4	W Flagler Street and SW 108 Avenue
5	W Flagler Street and SW 112 Avenue
6	NW 17 Avenue between NW 52 Street and NW 53 Street
7	NW 17 Avenue and NW 30 Street NW 17 Avenue and NW 35 Street
8	NW 7 Street near NW 38 Court
9	NW 7 Street and NW 27 Avenue NW 7 Street and NW 30 Avenue NW 7 Street and NW 37 Avenue
10	NW 22 Avenue between NW 91 Street and NW 92 Street
11	NW 22 Avenue between NW 81 Street and NW 81 Terrace
12	NW 22 Avenue and NW 79 Street
13	N Miami Avenue between N 24 Street and N 25 Street
14	E 4 Avenue between E 36 Street and E 37 Street
15	E 4 Avenue between E 33 Street and E 34 Street
16	NW 62 Street and NW 21 Avenue
17	NW 22 Avenue between NW 33 Street and NW 34 Street
18	NW 22 Avenue at NW 46 Street NW 22 Avenue at NW 54 Street
19	W 12 Avenue between W 37 Street and W 26 Street
20	SW 136 Street and SW 138 Avenue
21	NW 2 Avenue/NW 1 Place between NW 9 Street/Pedestrian Mall and NW 14 Street
22	N Miami Avenue and N 60 Street
23	W 60th Street between W 22nd Lane and W 22nd Court (Bucky Dent Park)
24	6th Street between Meridian Avenue and Euclid Avenue

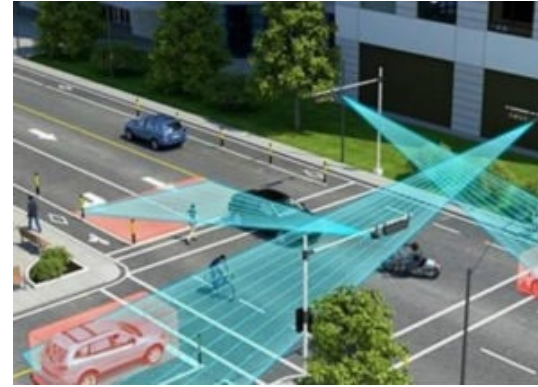
MDC SS4A: Demonstration & Supplemental Planning



Research study of unreported crashes using trauma and EMS data in partnership with UM KiDZ Neuroscience Center



Pilot projects of Zicla[®] Zipper Zero[®] system on three corridors with existing buffered bicycle lanes

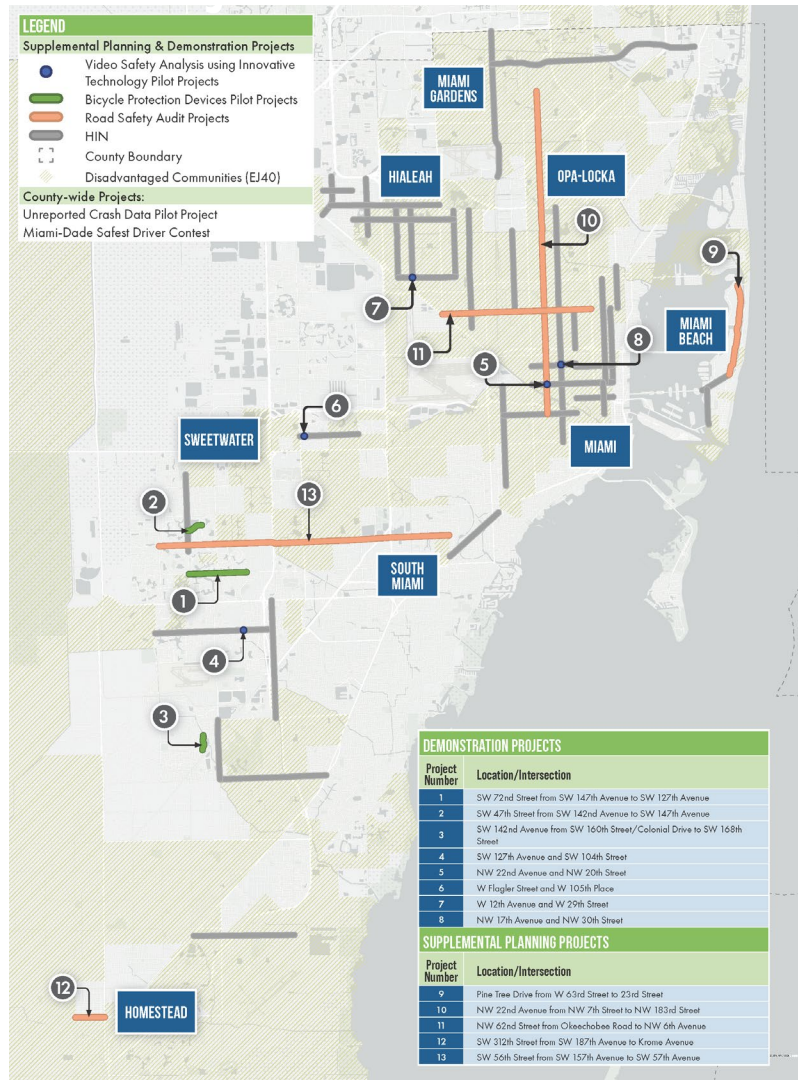


Video safety analysis pilot projects to test cameras using machine vision at five high-injury intersections



“Safest Driver” contest to analyze smartphone telematics data based on five performance evaluation metrics

Demonstration & Supplementation Planning Projects



DEMONSTRATION PROJECTS

Project Number	Location/Intersection
1	SW 72nd Street from SW 147th Avenue to SW 127th Avenue
2	SW 47th Street from SW 142nd Avenue to SW 147th Avenue
3	SW 142nd Avenue from SW 160th Street/Colonial Drive to SW 168th Street
4	SW 127th Avenue and SW 104th Street
5	NW 22nd Avenue and NW 20th Street
6	W Flagler Street and W 105th Place
7	W 12th Avenue and W 29th Street
8	NW 17th Avenue and NW 30th Street

SUPPLEMENTAL PLANNING PROJECTS

Project Number	Location/Intersection
9	Pine Tree Drive from W 63rd Street to 23rd Street
10	NW 22nd Avenue from NW 7th Street to NW 183rd Street
11	NW 62nd Street from Okeechobee Road to NW 6th Avenue
12	SW 312th Street from SW 187th Avenue to Krome Avenue
13	SW 56th Street from SW 157th Avenue to SW 57th Avenue

LEGEND

Supplemental Planning & Demonstration Projects

- Video Safety Analysis using Innovative Technology Pilot Projects
- Bicycle Protection Devices Pilot Projects
- Road Safety Audit Projects
- HIN
- - - County Boundary
- ▨ Disadvantaged Communities (EJ40)

County-wide Projects:
 Unreported Crash Data Pilot Project
 Miami-Dade Safest Driver Contest

National Association of City Transportation Officials (NACTO) 2024 Conference

Designing Cities 2024

- **Dates:** May 7-10
- **Location:** Intercontinental Miami
- **Attendance:** 1,000 officials, planners, and practitioners from cities across North America
- **Agenda:** Workshops, Walkshops & more

Plan to attend and support Walkshops in your region!

Contact Gabriella Serrado (gabriella.serrado@miamidade.gov) for more information



THANK YOU

Additional Questions

Email VisionZero@miamidade.gov

MIAMI DADE COUNTY VISION ZERO PROGRAM