

# Safe Streets and Roads for All (SS4A) Workshop

April 4, 2024

# Where is your jurisdiction in relationship to the SS4A application process?



Awarded and working on our plan, demonstration projects, or Implementation!



Developing our agreement with FHWA



Considering an application



What is SS4A and how do I apply?



# SAFE STREETS & ROADS FOR ALL ROUNDTABLE

*Speakers*



**Valentina Facuse**

Pedestrian & Bicycle Coordinator  
Palm Beach TPA



**Darren Thacker**

Transportation Specialist  
Federal Highway Administration



**Josette Severyn, AICP**

Multimodal Mobility Projects Administrator  
Broward County



**Paola Baez, P.E.**

Chief of Multimodal Development Section  
Miami-Dade County

# Agenda

- Introduction to Vision Zero
- SS4A Overview
- Broward County Planning Grant Experience
- Miami-Dade County Lessons Learned for Implementation Grants

A decorative graphic on the left side of the slide, consisting of several white, overlapping geometric shapes that resemble stylized arrows or chevrons pointing to the right. The shapes are set against a solid blue background.

# The top 5 things to know about Vision Zero

# #1: New Way to Think About Traffic Safety

## Traditional approach

Prevent crashes



## Safe System approach

Prevent death and serious injuries

Improve human behavior



Design for human mistakes/limitations

Control speeding



Reduce system kinetic energy

Individuals are responsible



Share responsibility

React based on crash history



Proactively identify and address risks

# Vision Zero

A commitment to **ZERO** traffic fatalities and serious injuries.

People make mistakes, but roads should protect users when the system operates perfectly—and when it doesn't.



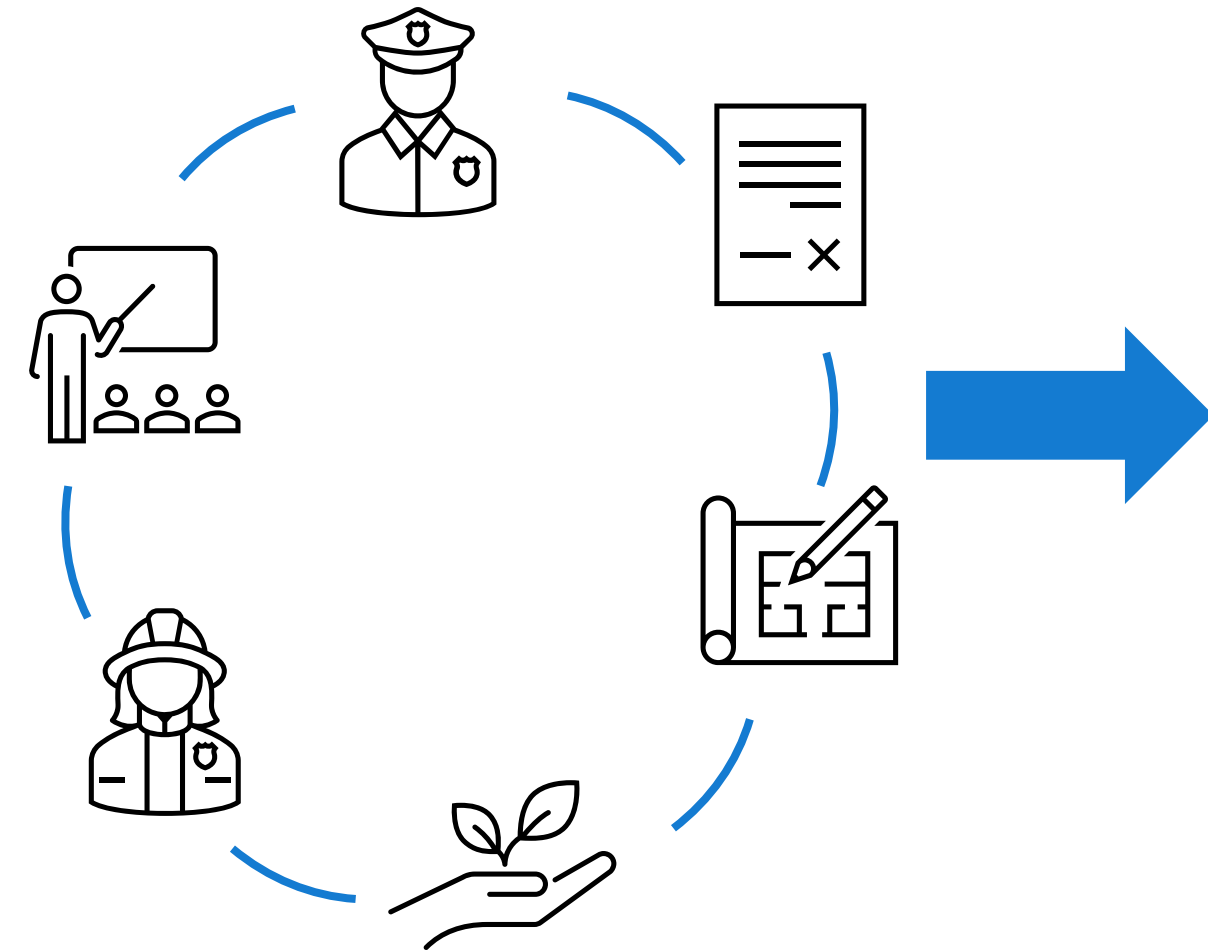


# #2: Protecting Our Most Vulnerable Users



Source: EAB.com

# #3: Works with multiple sectors to formulate multiple solutions



## SPEED MANAGEMENT



Speed Safety Cameras



Variable Speed Limits



Appropriate Speed Limits for All Road Users

## PEDESTRIAN/BICYCLIST



Crosswalk Visibility Enhancements



Bicycle Lanes



Rectangular Rapid Flashing Beacons



Leading Pedestrian Interval



Medians and Pedestrian Refuge Islands in Urban and Suburban Areas



Pedestrian Hybrid Beacons



Road Diets (Roadway Reconfiguration)



Walkways

[Safety.FHWA.DOT.Gov/ProvenCountermeasures](https://www.safety.fhwa.dot.gov/provencountermeasures/)



# #4: Doing Our Part



Source: FHWA 2023 based on data from WRI 2015.

# #4 Doing Our Part (Continued)



## Austin, TX

Adopted Vision Zero in 2015 and in 2021, fatal and serious injury crashes have declined 17% since then.



## Boulder, CO

Adopted Vision Zero in 2014.

**ZERO** fatalities in 2015 and 2017.



## Hoboken, NJ

Adopted Vision Zero in 2019.

**ZERO** traffic-related fatality since 2017.



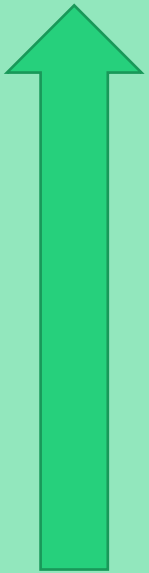
## Alexandria, VA

Adopted Vision Zero in 2017.

**ZERO** traffic-related deaths in 2023.

Source: *Safe System Approach for the Urban Core: Informational Report, FHWA, 2023*

# Why Palm Beach County?



Land area **1,964 sq.mi**  
Population

**1,533,801**

Second largest and most populous county in Florida by total area

Source: U.S. Census Bureau 2023 Total Population Estimates

## Palm Beach County Fatalities

**48**



**11**



One of the highest pedestrian and bicycle fatalities statewide

Source: FDOT Signal Four Analytics, 2023 data



# Tying in Psychology with Human Behavior...

## SYSTEM 1

Intuition & instinct



Unconscious  
Fast  
Associative  
Automatic pilot



## SYSTEM 2

Rational thinking



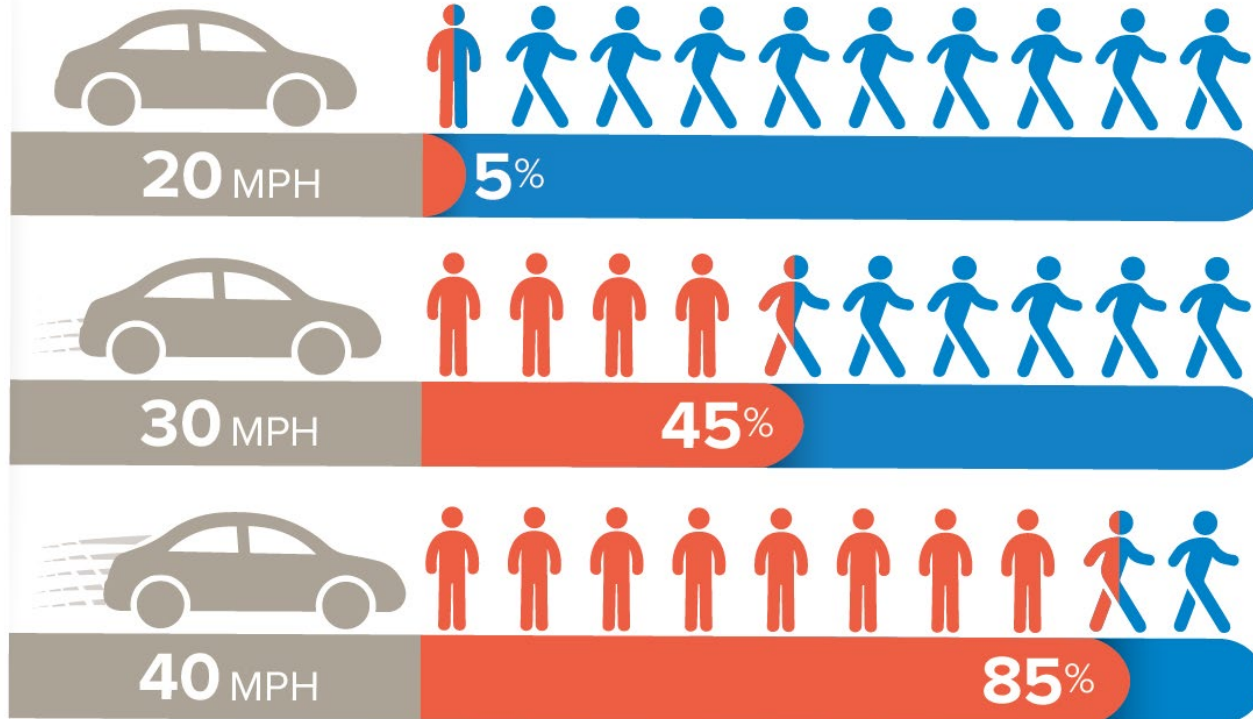
Takes effort  
Slow  
Logical  
Lazy  
Indecisive

Source: *Thinking, Fast, and Slow* by Daniel Kahneman

# #5 Reducing Kinetic Energy (Speed)

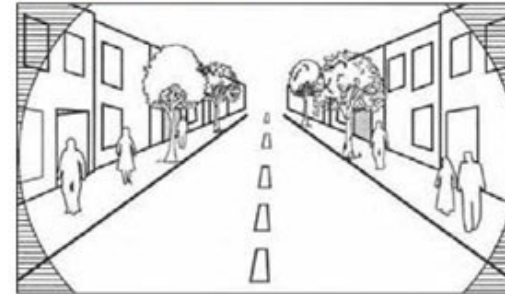
If hit by a car traveling:

● Fatality ● Person survives collision

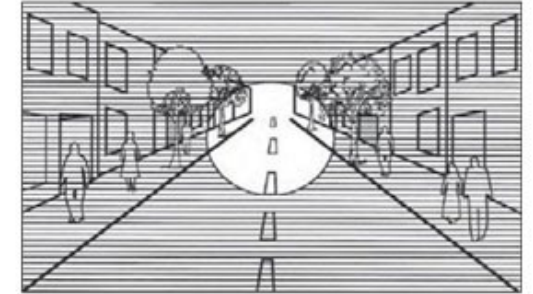


National Traffic Safety Board (2017) Reducing Speeding-Related Crashes Involving Passenger Vehicles. Available from: <https://www.nts.gov/safety/safety-studies/Documents/SS1701.pdf>

## WHY SPEED MATTERS

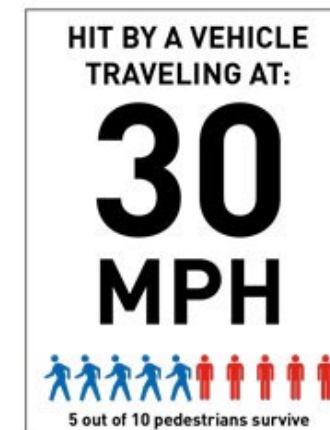


Field of vision at 15 MPH



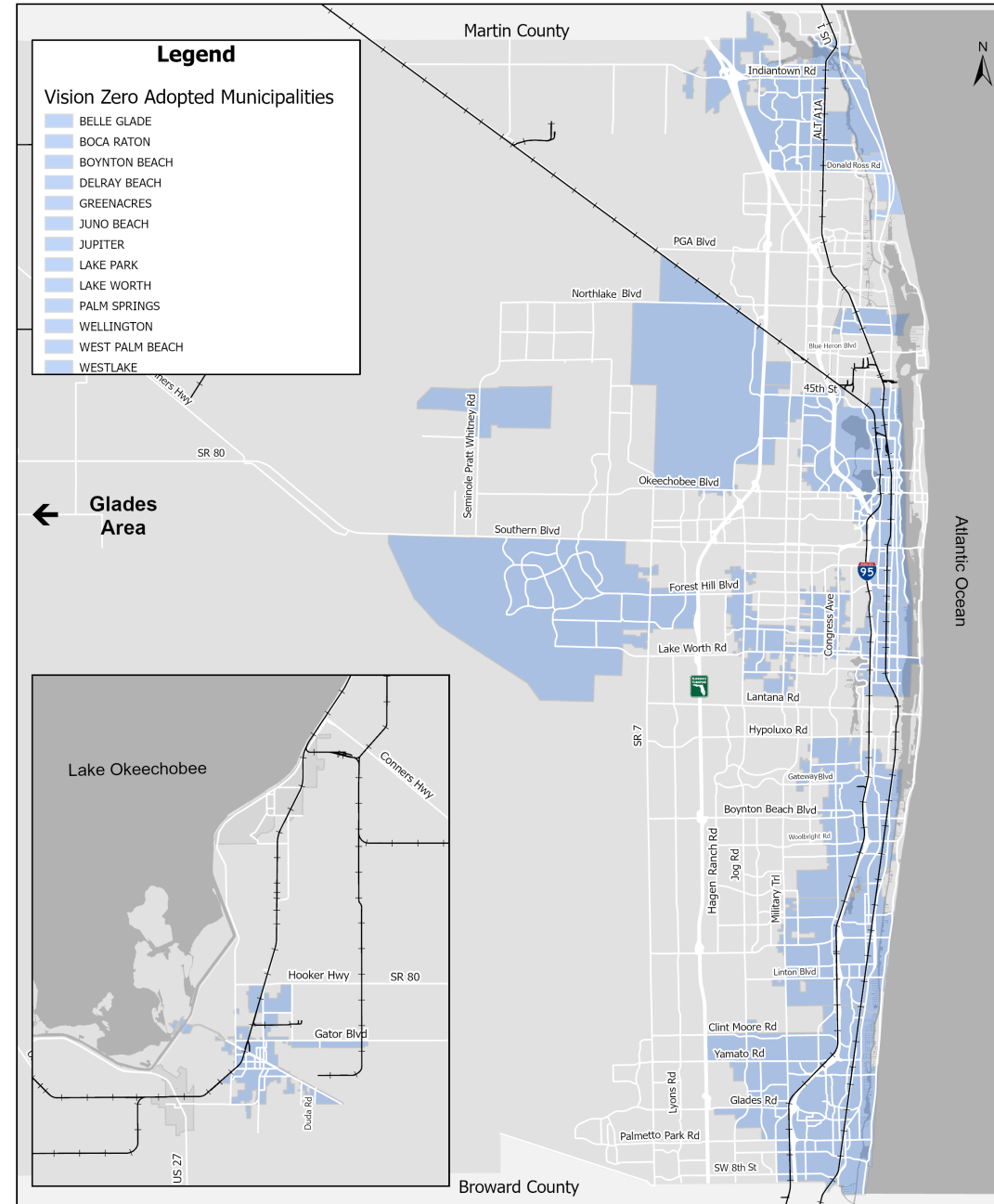
Field of vision at 30 to 40 MPH

A driver's field of vision increases as speed decreases. At lower speeds, drivers can see more of their surroundings and have more time to see and react to potential hazards.



Speed is especially lethal for vulnerable users like pedestrians and people biking. The risk of injury and death increases as speed increases.

# Vision Zero Communities





# Is your agency considering adopting a Vision Zero policy?



# So you've adopted a policy, what's next?



**1. BUILD A ROBUST DATA FRAMEWORK**



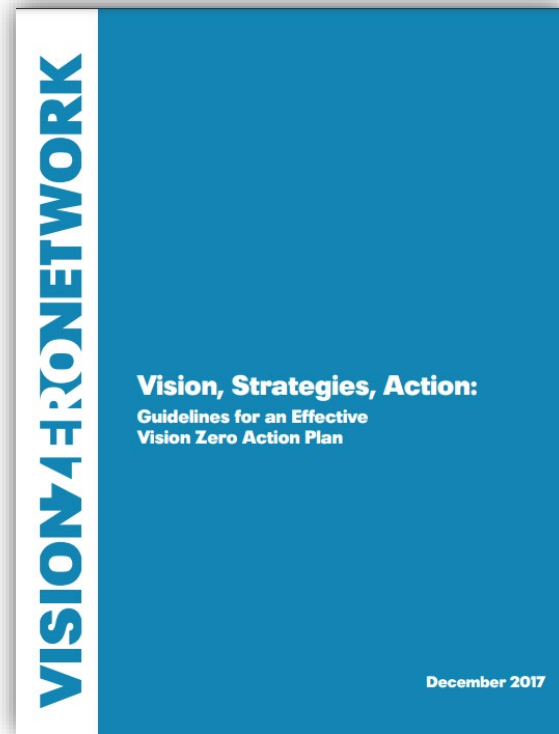
**2. SET MEASURABLE GOALS WITH A CLEAR TIMELINE FOR IMPLEMENTATION**



**3. BE ACCOUNTABLE**



**4. ENSURE TRANSPARENCY**



- ✓ Adopt Vision Zero Policy
- 1. Develop a Vision Zero Action Plan**
- 2. Create a Vision Zero Local Task force
- 3. Learn more & stay informed:
  - 1. [PalmBeachTPA.org/VisionZero](http://PalmBeachTPA.org/VisionZero)
  - 2. [VisionZeroNetwork.org](http://VisionZeroNetwork.org)
- 4. Seek Grant Funding Opportunities:
  - 1. [PalmBeachTPA.org/Funding](http://PalmBeachTPA.org/Funding)
  - 2. [AlertTodayFlorida.com/HVE](http://AlertTodayFlorida.com/HVE)
  - 3. [Transportation.gov/grants/SS4A](http://Transportation.gov/grants/SS4A)