



Okeechobee Boulevard Gateway Alternatives Study

Stewart Robertson, P.E.



Agenda

- Introductions
- Study Purpose + Timeline
- Committed Transportation Improvements
- Previously suggested concepts
- Conclusion

Study Purpose

Identify and evaluate proposed alternatives to improve walking, bicycling, transit, and driving on Okeechobee Boulevard in Downtown West Palm Beach.



Study Timeline

Alternatives Identification & Development

Nov. 2023

Feb. 2024

Workshops & Engagement

Dec. 2023

May 2024

Alternatives Evaluation

Feb. 2024

May 2024

Reporting & Implementation Plan

June 2024

Complexities of Mobility in Downtown WPB



People oriented downtown



Substantial commuter base



Complex operations

Project Location and Committed Improvements

Okeechobee Boulevard from Interstate 95 to the Royal Park Bridge in Downtown West Palm Beach ~ 2 miles



Previously Proposed Options

- Transit strategy
- Bridges & tunnels



Envisioned Transit Strategy

- 13.5-mile corridor that traverses Wellington, Royal Palm Beach, West Palm Beach, and unincorporated Palm Beach County



Mobility Choices



Economic Development



Safety



Land Use



Quality of Life & Environment

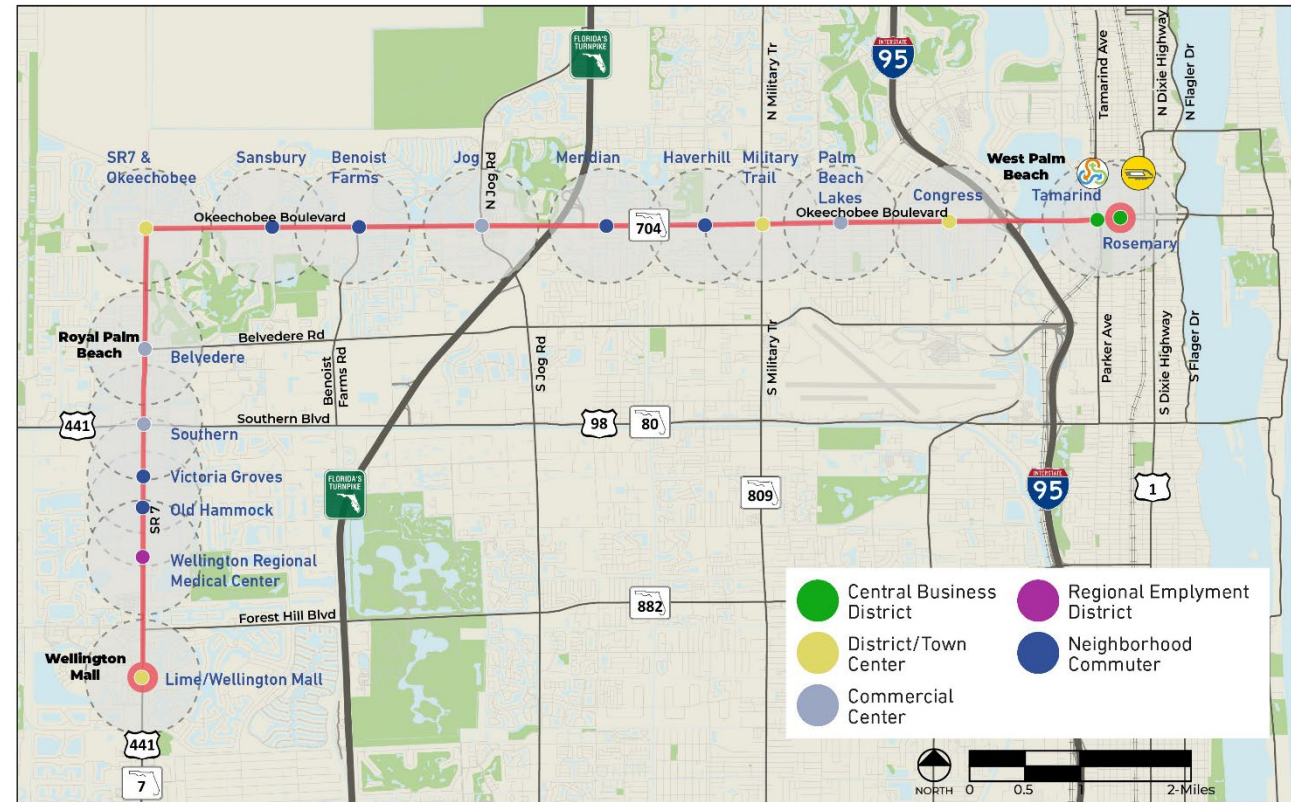


Equity



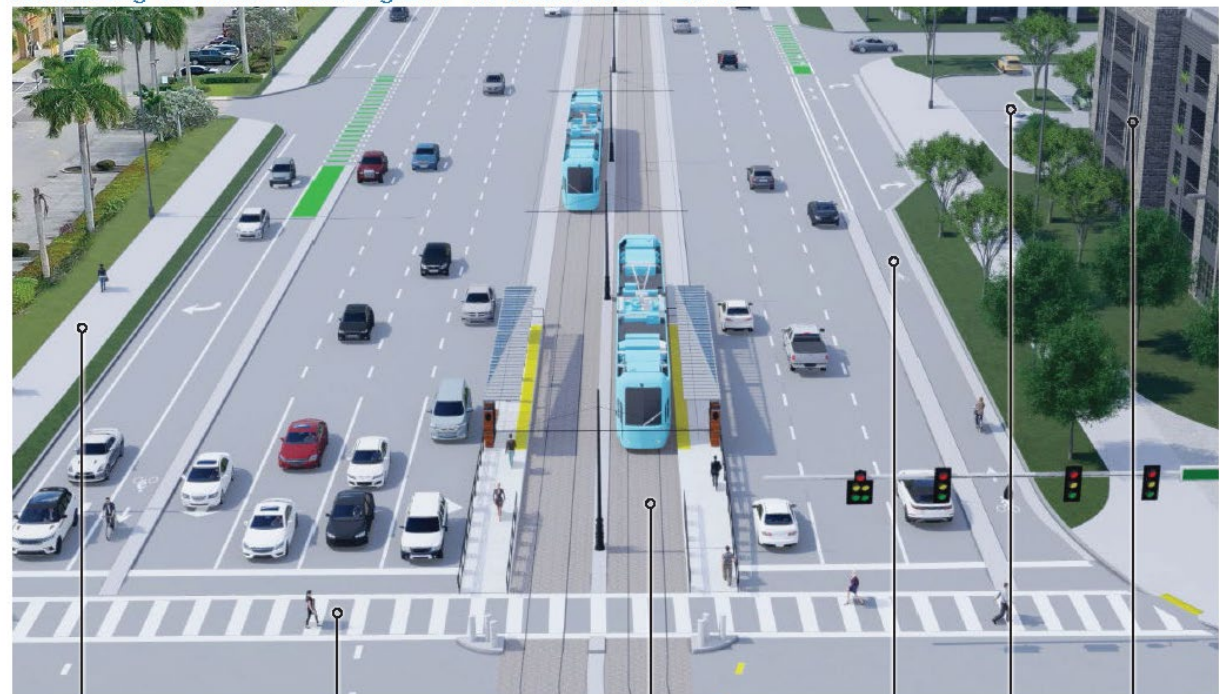
Affordable Housing

Proposed Stations



Envisioned Transit Strategy

Rendering of Center-Running LRT on Okeechobee Blvd.



Shared
Use Paths

Crosswalk to Access
Median Station

LRT Tracks
in Median

Separated
Bike Lanes

Park-and-Ride Lots
Close to Stations

Transit Oriented
Design

STATION: ROSEMARY SQUARE

Typology: Central Business District



Station Area Projections



**Potential New
Residential**
1,086 Homes
163 Affordable Units*



**Potential New
Commercial**
2,960,453 SF



**Estimated
Ad Valorem Tax
Revenue**
\$1,873,539,964



**Potential New
Employment**
3,158 Jobs



**Potential
Total Parking**
4,090 Spaces



**Development
Market Score**
HIGH

*Assumes 15% of the overall new residential

Key Considerations & Future TOD Vision

- Support opportunities for urban infill redevelopment within existing narrow blocks
- Establish multimodal connections to Downtown West Palm Beach, Palm Beach Atlantic University, Palm Beach County Convention Center, and future UF Campus
- Capitalize on location and access to Downtown West Palm Beach, Transit Oriented Village, Tri-Rail/Amtrak and Brightline
- Infill and capitalize on downtown West Palm Beach's capital investments and current land development practices
- Already developed in a transit-oriented fabric, this station area provides a fairly "TOD-ready" location with existing densities and access to existing forms of rail



Conceptual Vision
(Okeechobee Blvd near Quadrille Blvd)

Australian/Tamarind Intersection Alternatives



Flyover Bridges



At-Grade Intersections



Tunnels



Single-Point Urban Interchange

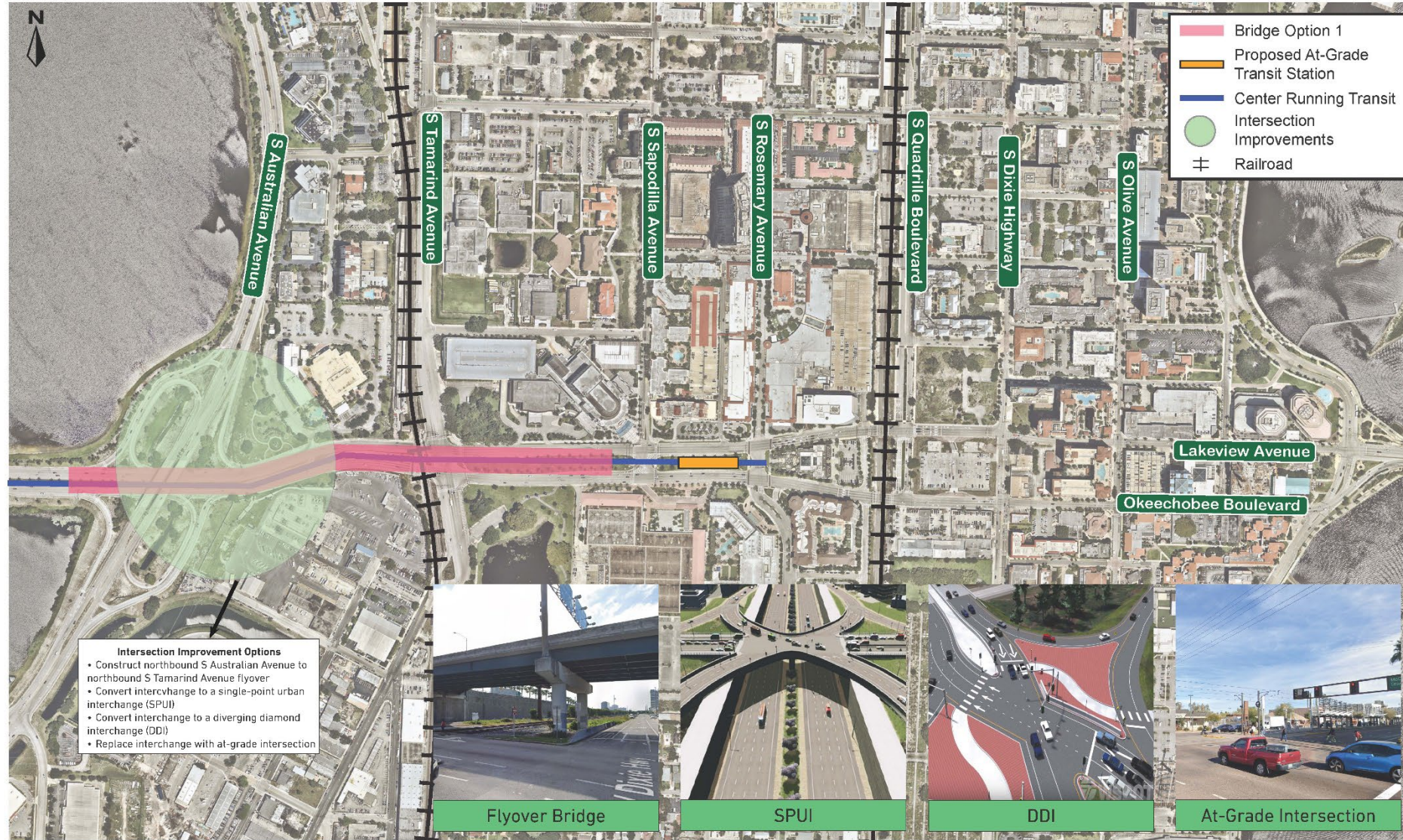


Diverging Diamond Interchange



Vehicular Bridge Option 1

Okeechobee Boulevard west of S Australian Avenue to west of S Sapodilla Avenue

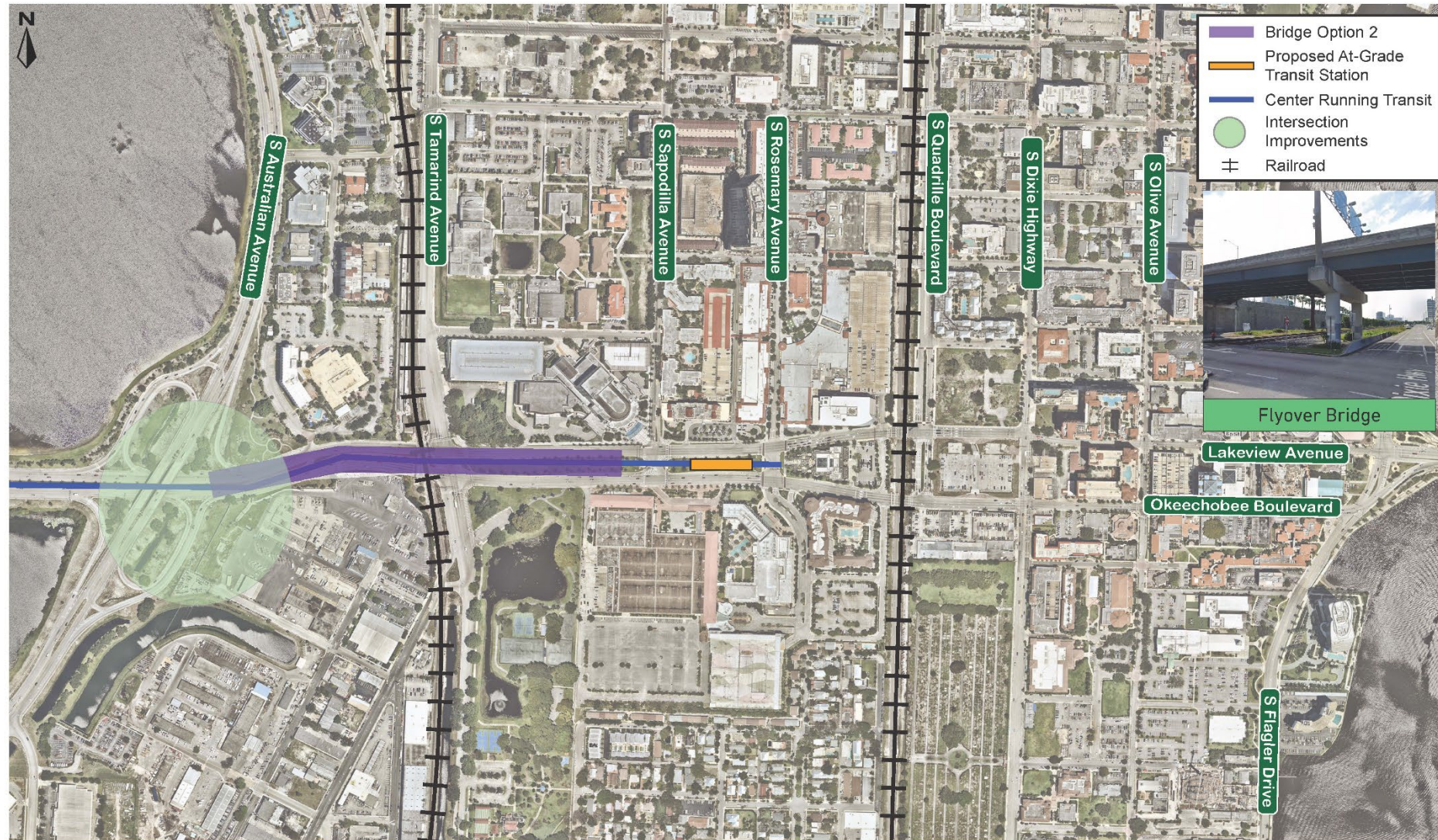


Mode				Movement		Remove Rail Crossings		
Walk	Bike	Transit	Driving	Regional Pass Through Traffic	Local Crossing & Connections	None	One	Both
			X	X			X	



Vehicular Bridge Option 2

Okeechobee Boulevard east of S Australian Avenue to the west of S Sapodilla Avenue



Mode				Movement		Remove Rail Crossings		
Walk	Bike	Transit	Driving	Regional Pass Through Traffic	Local Crossing & Connections	None	One	Both
			X	X			X	



Tunnel Option 1

Okeechobee Boulevard east of S Australian Avenue to S Olive Avenue

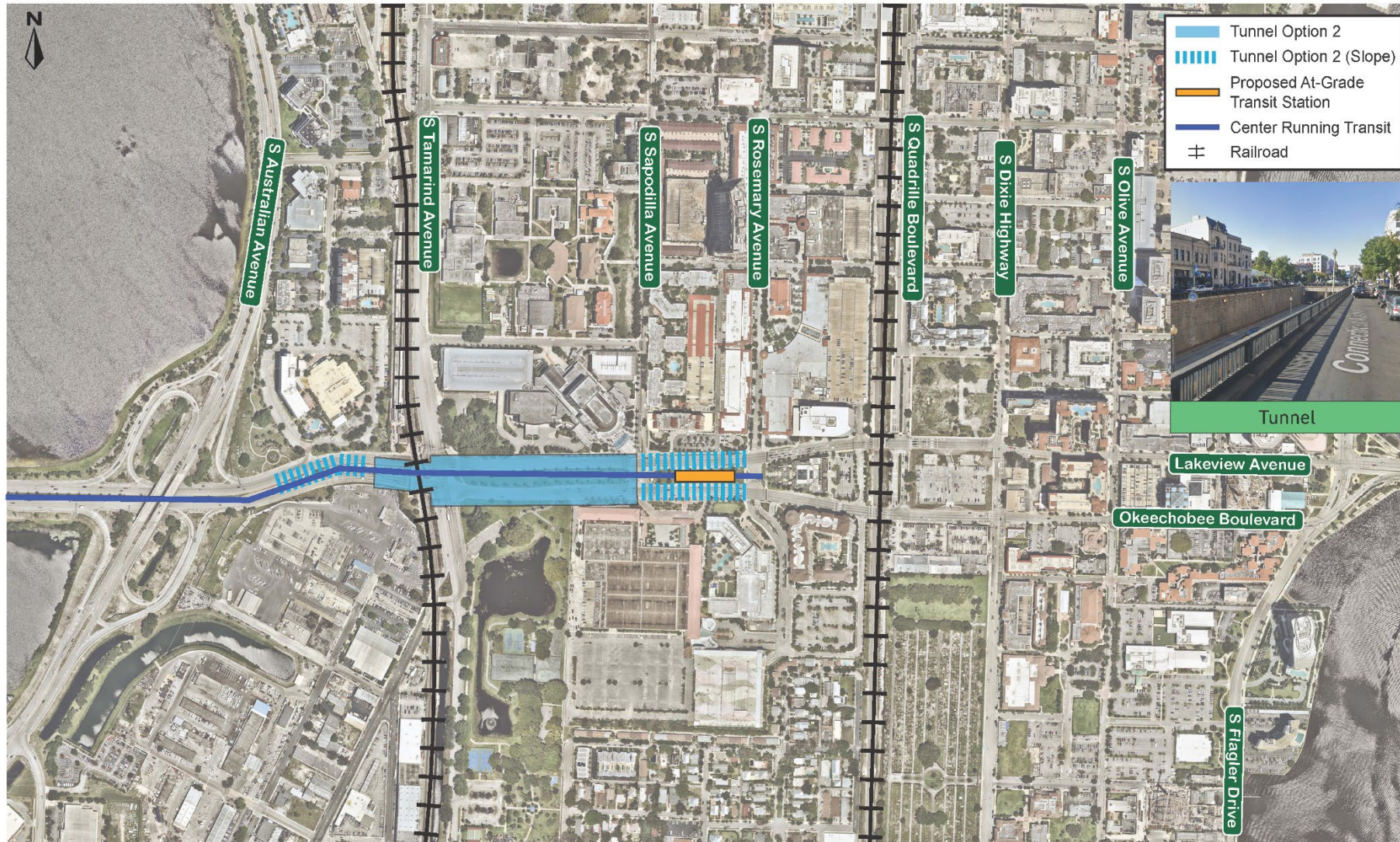


Mode				Movement		Remove Rail Crossings		
Walk	Bike	Transit	Driving	Regional Pass Through Traffic	Local Crossing & Connections	None	One	Both
			X	X			X	X



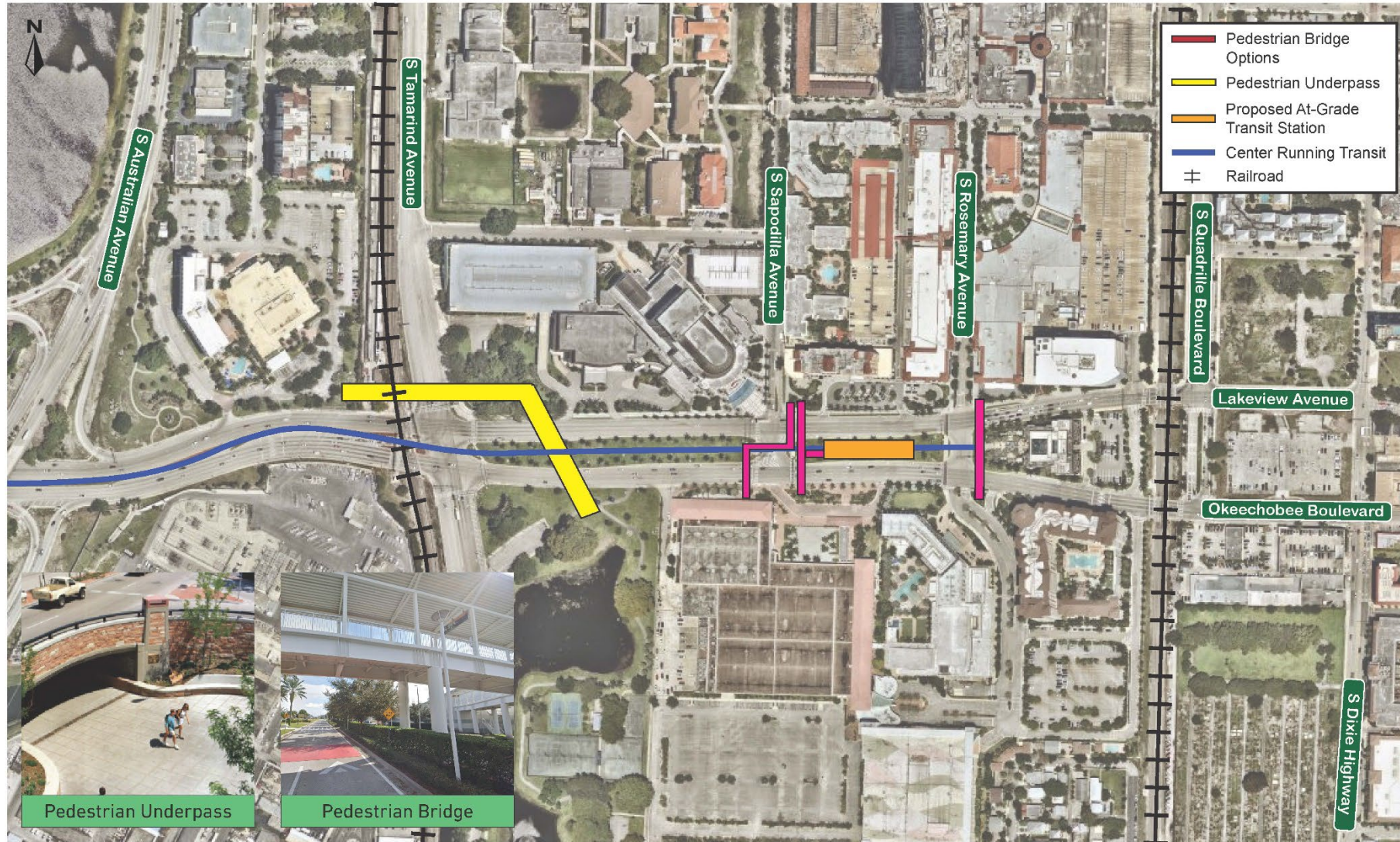
Tunnel Option 2

Okeechobee Boulevard east of S Australian Avenue to S Rosemary Avenue



Mode				Movement		Remove Rail Crossings		
Walk	Bike	Transit	Driving	Regional Pass Through Traffic	Local Crossing & Connections	None	One	Both
			X	X			X	

Pedestrian Improvement Options



Mode				Movement		Remove Rail Crossings		
Walk	Bike	Transit	Driving	Regional Pass Through Traffic	Local Crossing & Connections	None	One	Both
X	X	X			X		X	



Next Steps

- Direct Stakeholder + Technical Engagement
- Finalize Concept List for Vetting
- Benefit-Cost Analysis
- Conceptual Engineering + Renderings
- Additional Workshops + Public Engagement
- Reporting and Implementation Plan



What else should we
consider?

What is missing?



Thank You & Happy Holidays!

Brian Ruscher
Bruscher@PalmBeachTPA.org