

April 3, 2024

Palm Beach County Department of Airports

Airport Overview

PRESENTED TO:

**Palm Beach Transportation Planning Agency (TPA)
Citizens Advisory Committee**

PRESENTED BY:

**Gary M. Sypek
Senior Deputy Director of Airports
Palm Beach County Department of Airports**



Palm Beach County's Airport System

Palm Beach International Airport

Commercial Service and General Aviation

PBI

North Palm Beach County General Aviation Airport

Reliever, General Aviation

F45



Palm Beach County Park Airport (Lantana)

Reliever, General Aviation

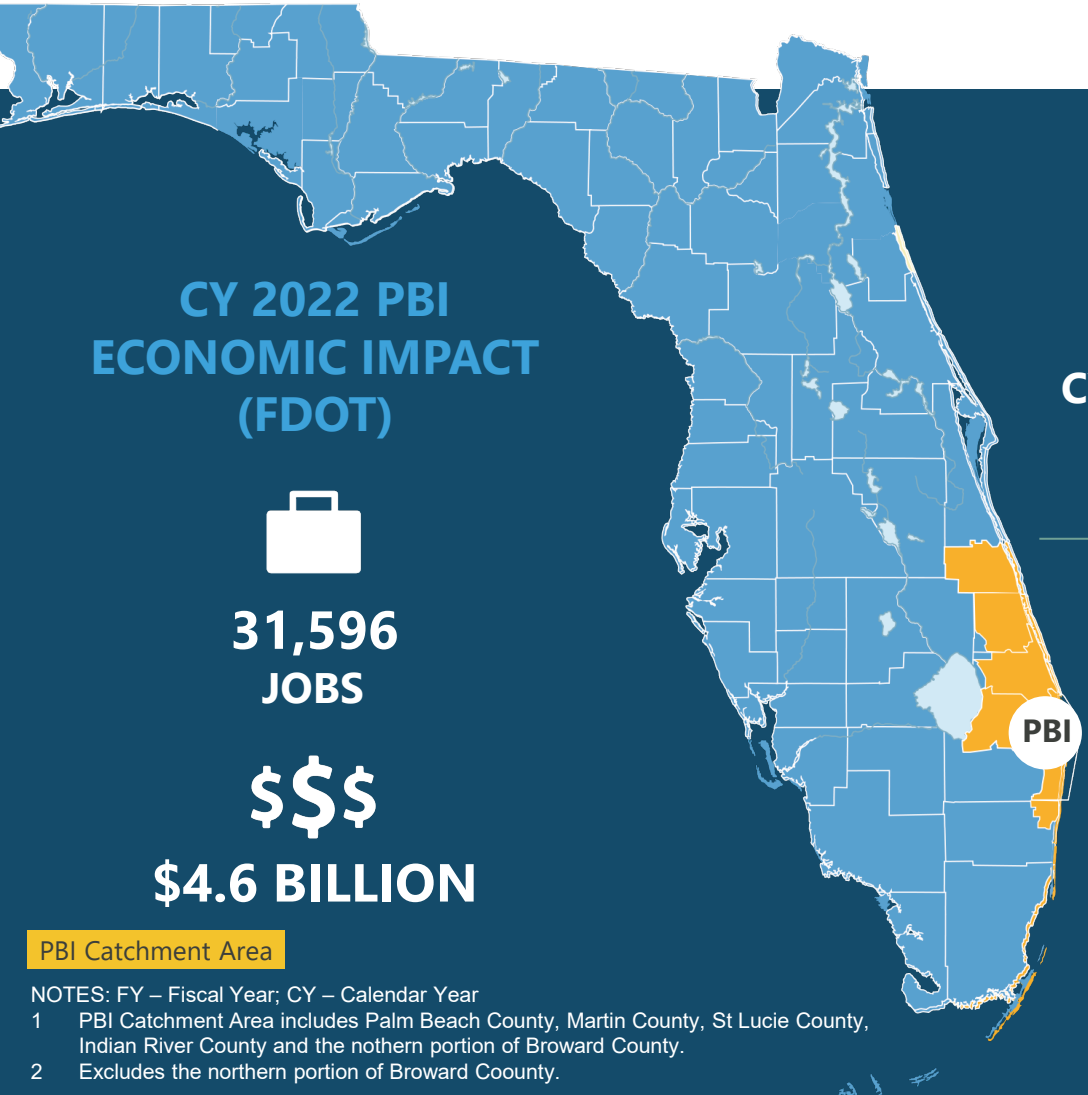
LNA

Palm Beach County Glades Airport (Pahokee)

General Aviation

PHK

Palm Beach County Airport System By the Numbers



KEY ACTIVITY METRICS

 CY 2023 PASSENGERS 7.8M Up 17% from CY 2022	 14 PASSENGER SERVICE AIRLINES As of March 2024	 NONSTOP SERVICE TO 44 DESTINATIONS As of March 2024
--	---	--

SOCIOECONOMIC CHARACTERISTICS² (PBI CATCHMENT AREA)

 TOTAL POPULATION 2.2M → 2.4M FY 2023 FY 2030	 TOTAL EARNINGS \$74.3B → \$90.6B FY 2023 FY 2030	 TOTAL PER CAPITA PERSONAL INCOME \$81,330 → \$90,595 FY 2023 FY 2030
--	---	--

CY 2022 GA Airports Economic Impact	F45	 467 Jobs  \$77.3 Million	LNA	 772 Jobs  \$144 Million	PHK	 33 Jobs  \$5.7 Million
--	------------	---	------------	--	------------	---

Palm Beach County Department of Airports

- Responsible for the operation, management and maintenance of the County's Airport System
- Policy is established by the Board of County Commissioners
- Personnel Complement – 168 (FY24)
- Comprised of the following Divisions:
 - Finance & Administration
 - Marketing & Communications
 - Air Service Development
 - Airport Planning & Development
 - Real Estate & Concessions
 - Operations & Maintenance



Airport Community

Airport Businesses

Airlines

Concessionaires

- Restaurants
- Stores
- Rental Car Agencies
- Advertising

Fixed Base Operators (FBO)

Airline Service Providers

Commercial Tenants

- Warehouses
- Hotels
- Toyota Dealership
- Drive Shack
- PopStroke

Partner Agencies

PBC Fire Rescue - Aircraft Rescue & Fire-Fighting (ARFF)

Palm Beach County Sheriff's Office (PBSO)

Transportation Security Administration (TSA)

Federal Aviation Administration (FAA)

- Air Traffic Control

Customs & Border Protection (CBP)

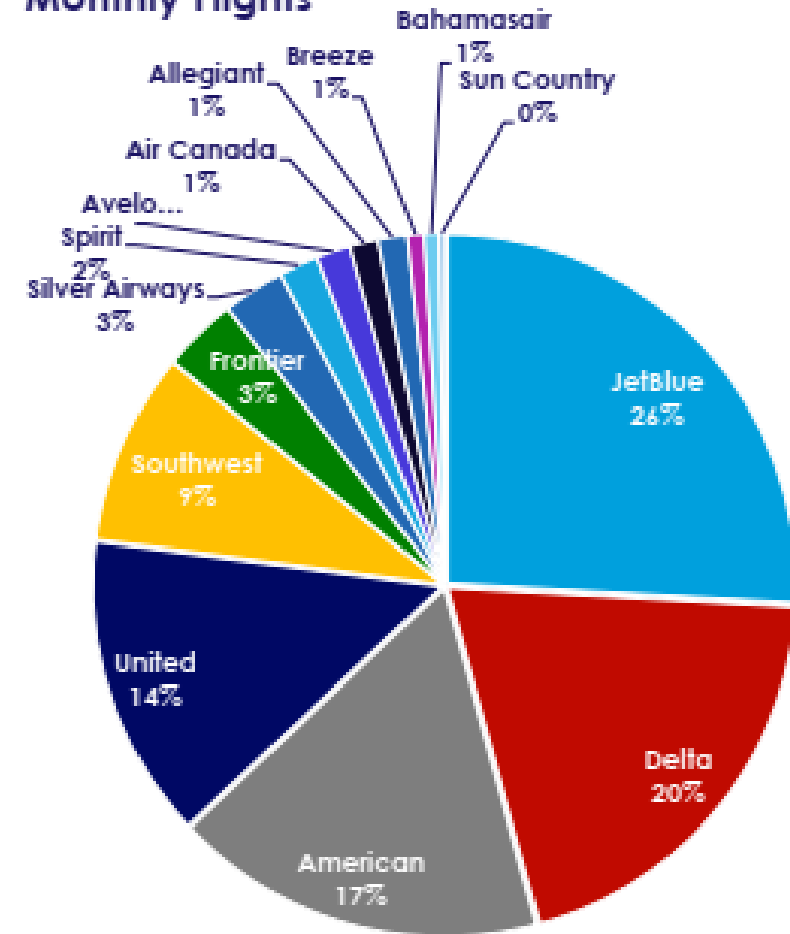
Federal Bureau of Investigation (FBI)



Palm Beach International(PBI)

- 14 Airlines Serving 44 Destinations
- Nearly 7.9 Million Passengers Annually
- Over 173,000 Annual Aircraft Operations
- Nearly 30,000 Tons of Cargo Annually
- Award-winning recognition
 - 4th Best Airport - *U.S. Conde Nast 2023 Readers' Choice Awards*
 - 8th Best Domestic Airport - *Travel + Leisure Magazine's 2023 World's Best Awards*
 - 4th Best Medium-Size Airport - *2023 J.D. Power North America Airport Satisfaction Survey*

Monthly Flights



PBI February 2024 Traffic Report

PALM BEACH INTERNATIONAL AIRPORT
TRAFFIC REPORT
for the period ended February 2024

	Feb 2024	Feb 2023	Percent Change	12 Months ended Feb 2024	12 Months ended Feb 2023	Percent Change
Total Passengers	779,967	694,802	12.3%	7,891,396	6,906,007	14.3%
Total Estimated Seat Capacity (1)	978,286	831,920	17.6%	9,530,964	8,010,299	19.0%
Estimated Load Factor (2)	79.7%	83.5%	-3.8%	82.8%	86.2%	-3.4%
Total Cargo Tons (3)	2,307	2,333	-1.1%	29,743	30,788	-3.4%
Landed Weight (thousands of lbs)	471,094	391,757	20.3%	4,602,080	3,946,207	16.6%
Air Carrier Operations (4)	6,110	5,208	17.3%	60,446	52,992	14.1%
GA & Other Operations (5)	11,867	12,381	-4.2%	112,658	119,459	-5.7%
Total Operations (5)	17,977	17,589	2.2%	173,104	172,451	0.4%

- (1) Estimated Seat Capacity; Adjusted Innovata/OAG Scheduled seats, actual capacity may vary
- (2) Percentage Change in load factor is stated in absolute difference
- (3) Freight plus mail in US Tons
- (4) Landings plus Takeoffs, includes cargo carriers
- (5) Per FAA Tower

Palm Beach County Department of Airports
 846 PBIA, West Palm Beach , FL 33406-1470
www.pbia.org

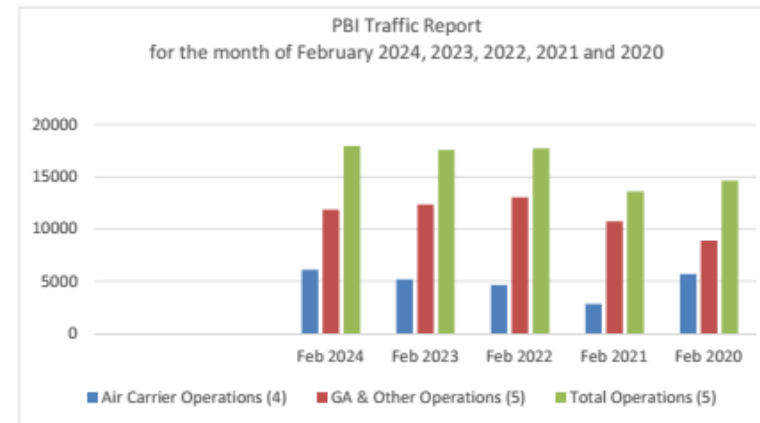
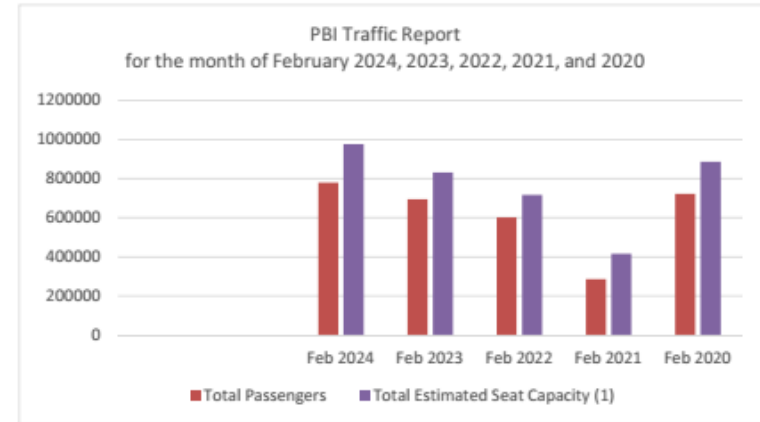
PBI Traffic Report Comparison (Feb 2020 – Feb 2024)

PALM BEACH INTERNATIONAL AIRPORT
TRAFFIC REPORT
for the month of February 2024, 2023, 2022, 2021 and 2020

	Feb 2024	Feb 2023	Feb 2022	Feb 2021	Feb 2020
Total Passengers	779,967	694,802	602,090	286,084	722,969
Total Estimated Seat Capacity (1)	978,286	831,920	716,975	415,171	886,709
Estimated Load Factor (2)	79.7%	83.5%	84.0%	68.9%	81.5%
Total Cargo Tons (3)	2,307	2,333	2,383	2,183	2,236
Landed Weight (thousands of lbs)	471,094	391,757	341,897	201,675	420,146
Air Carrier Operations (4)	6,110	5,208	4,658	2,834	5,718
GA & Other Operations (5)	11,867	12,381	13,071	10,773	8,926
Total Operations (5)	17,977	17,589	17,729	13,607	14,644

- (1) Estimated Seat Capacity; Adjusted Innovata/OAG Scheduled seats, actual capacity may vary
- (2) Percentage Change in load factor is stated in absolute difference
- (3) Freight plus mail in US Tons
- (4) Landings plus Takeoffs, includes cargo carriers
- (5) Per FAA Tower

Palm Beach County Department of Airports
846 PBI, West Palm Beach , FL 33406-1470
www.pbia.org



Department of Airports Funding Overview

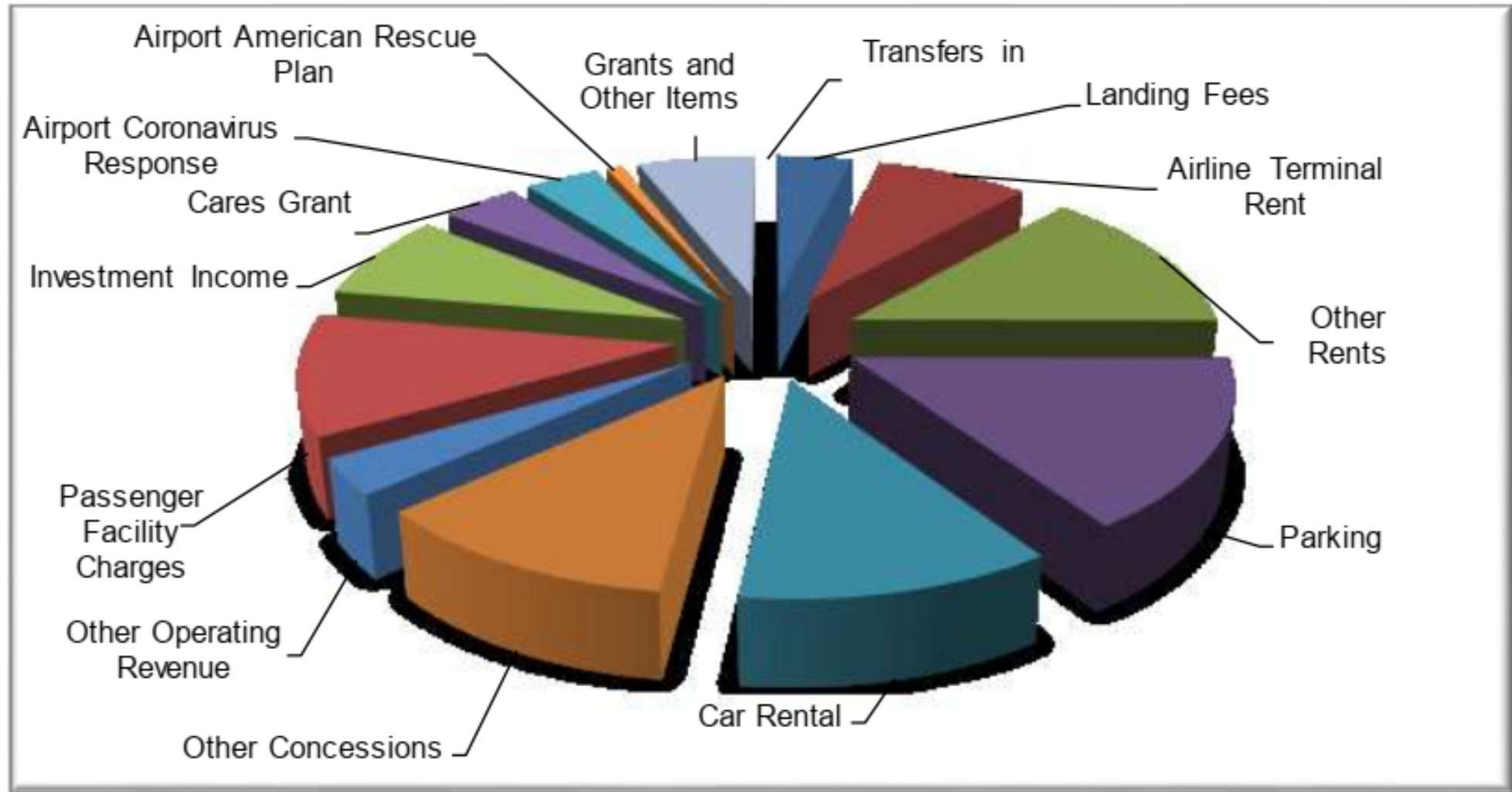
- **Operates as an enterprise fund, no ad valorem tax support**
 - Operation and maintenance costs are funded by user fees paid by airlines, businesses and passengers
 - Capital costs are funded by a combination of Federal and State grants, Passenger Facility Charges (PFC), revenue bonds and airport revenues
- **Revenues consist of “airline” and “non-airline” revenues:**
 - Non-airline revenues reduce overall costs to the airlines (e.g. public parking, concessions, general aviation fees, and commercial leases)
 - Airline rates and charges are determined by agreement with the Signatory Airlines
- **Airport revenues may only be used for the operation, maintenance and improvement of the County’s Airport System**
- The County is considered an “airport sponsor”
- By accepting grant funding, airport sponsors make binding commitments to assure that the public’s interest in civil aviation will be protected

Sponsor Grant Assurances

An airport sponsor is:

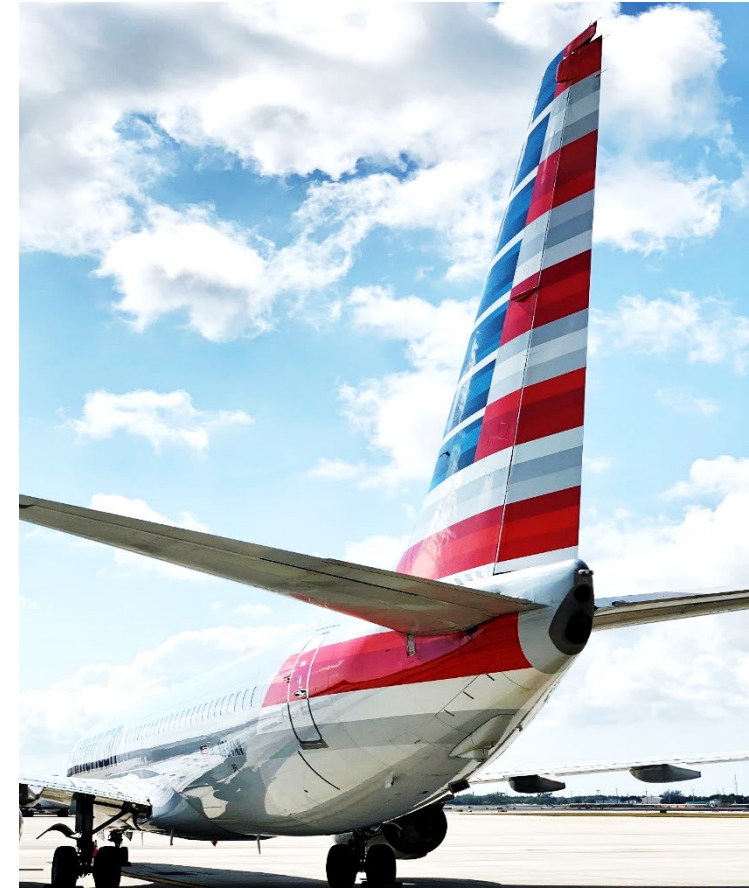
- Prohibited from taking any action which could preclude it from complying with its grant obligations (Grant Assurance #5).
- Required to operate its airport for the use and benefit of aeronautical users and to make the airport available to all types, kinds, and classes of aeronautical activities on fair and reasonable terms, and without unjust discrimination (Grant Assurance #22).
- Prohibited from granting exclusive rights to the use of the airport by any persons providing, or intending to provide, aeronautical services to the public (Grant Assurance #23).
- Required to maintain a fee and rental structure for the facilities and services at the airport which will make the airport as self-sustaining as possible under the circumstances (Grant Assurance #24).
- Must only use airport revenue for the operational and capital costs of the airport, the local airport system, or other facilities owned or operated by the airport owner or operator and directly and substantially related to the air transportation of passengers or property (Grant Assurance #25).

Sources of Airport Funding



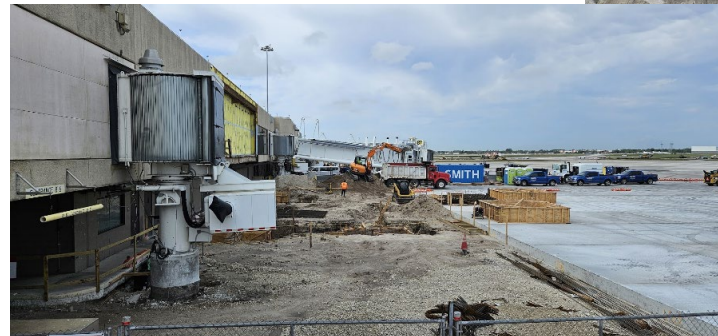
Role of the Airlines

- **Signatory Airlines assume significant responsibility for the costs of the County's Airport System:**
 - Each year, airline rates and charges for the upcoming fiscal year are established by estimating airport costs for the upcoming fiscal year
 - At the end of the fiscal year, if the actual costs are greater than the estimated costs, the Signatory Airlines are obligated to pay the differential
 - Rates and charges may be adjusted mid-year in the event the County determines there may be a shortfall
 - By assuming the risk, the Signatory Airlines are entitled to revenue sharing in an amount equal to 35% of net remaining revenues, if any
- **PBI's Cost Per Enplanement (CPE), which is the primary metric used by the airline to determine costs, has historically been significantly lower than peer airports**



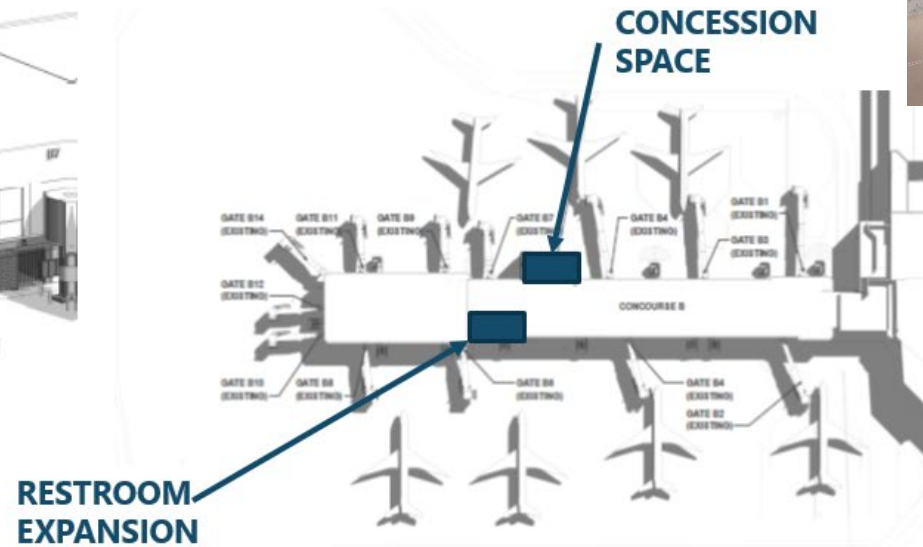
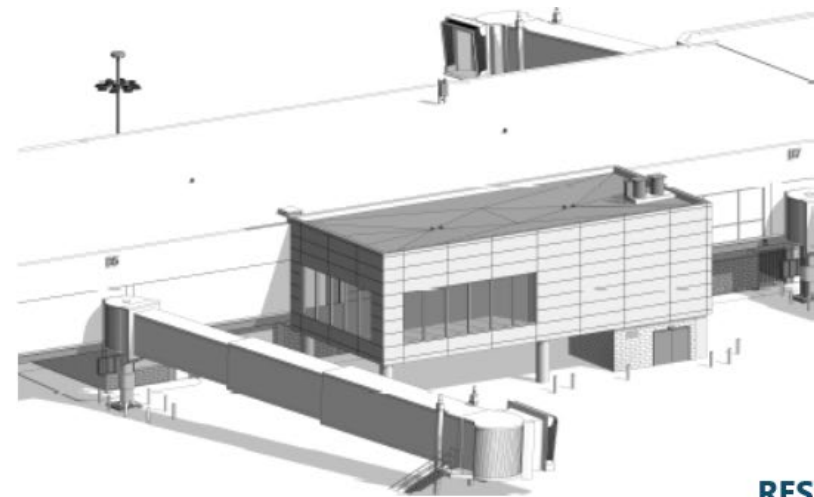
PBI Projects Currently Under Construction

- 400 Hz Ground Power Units (GPU) Replacement
- Pre-conditioned Air – Point-of-Use Replacement
- Switchgear Replacement - Phase 1
- Terminal Roof Replacement
- Short-Term and Long-Term Parking Garage Repairs
- Central Airfield Improvements
- Concourse B Expansion

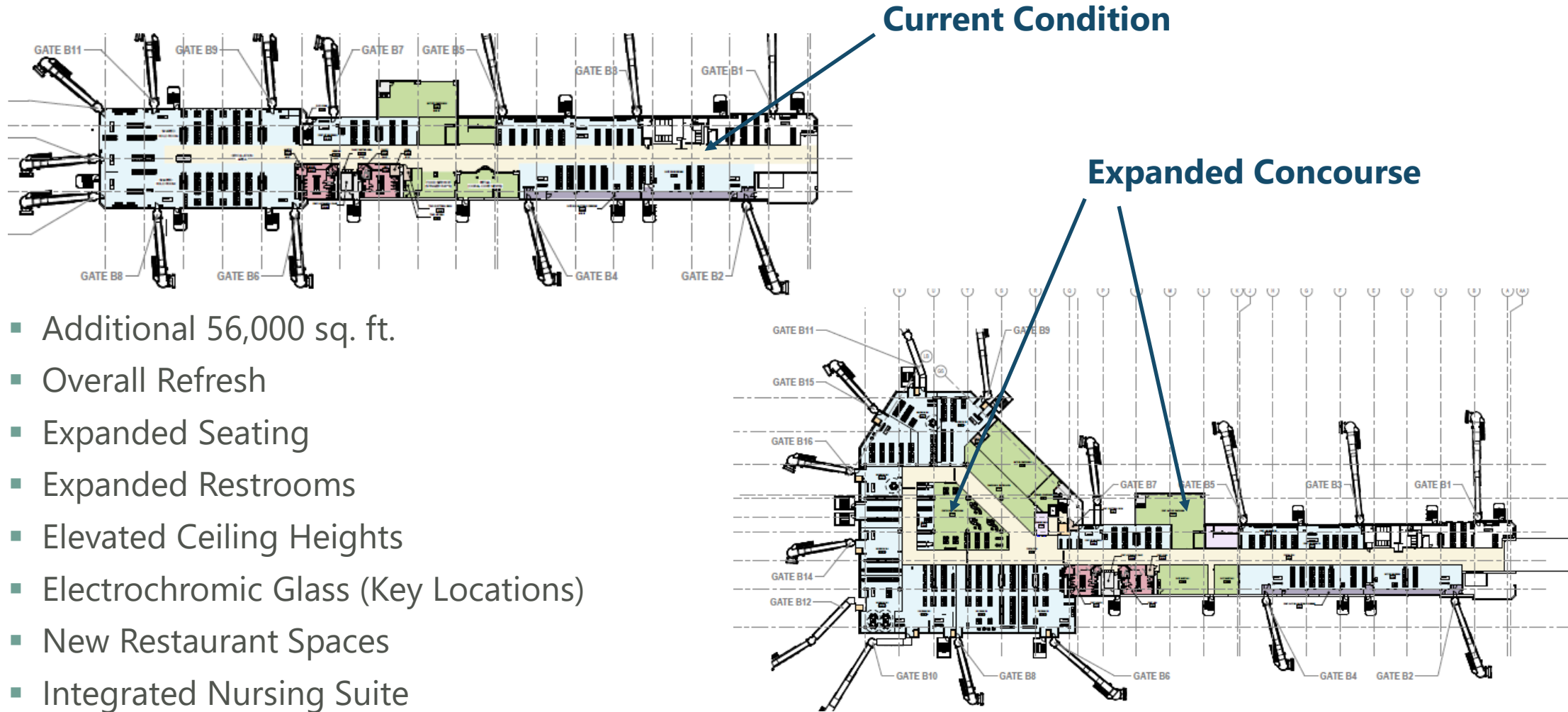


Phase I - Concourse B Expansion

- Phase I includes the expansion of restroom facilities and construction of approximately 3,000 square feet of new shell space for a future sit down restaurant between Gates B5 and B7.
- Phase I - Anticipated to be completed in 2024.



Full Concourse B Expansion



- Additional 56,000 sq. ft.
- Overall Refresh
- Expanded Seating
- Expanded Restrooms
- Elevated Ceiling Heights
- Electrochromic Glass (Key Locations)
- New Restaurant Spaces
- Integrated Nursing Suite
- Infrastructure for (2) Loading Bridges

Concourse B Expansion



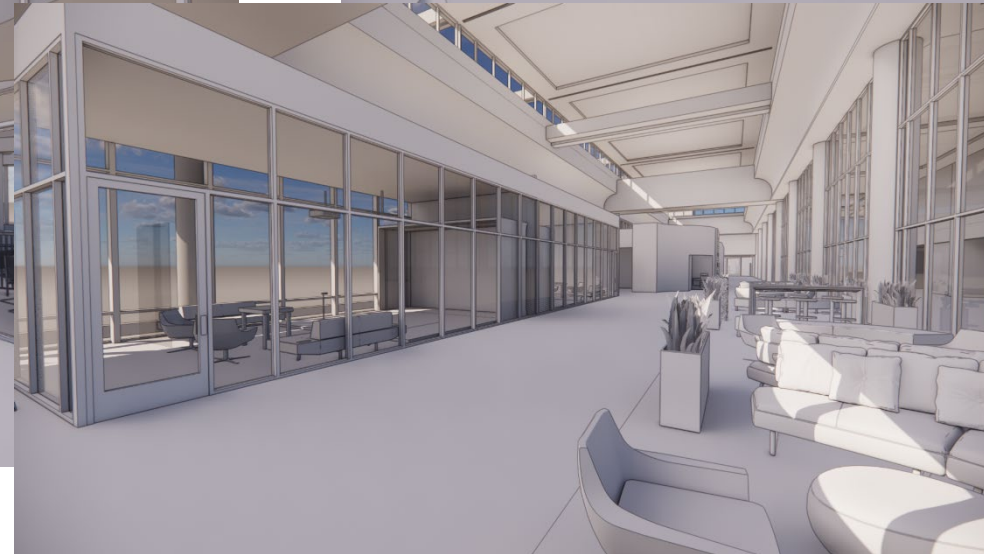
PBI Future Projects

- Runway 10L-28R Rehabilitation
- Air Cargo Access Road Improvements
- Elevator Replacement
- Air Handler Replacement - Phase 2
- Electrical Infrastructure Improvements – Phase 2
- New Aircraft Rescue & Fire-Fighting (ARFF) Facility
- Repairs to Short-Term and Long-Term Garages – Phase 2
- Miscellaneous Pavement Repairs



On the Horizon - Main Terminal Modernization

- Connecting Concourses A/B and C through new post-security space
- Replacing the existing skylight with a hard ceiling and clearstory
- New terrazzo flooring
- Expanding security checkpoints
- New common use lounge space
- Space for engaging experiences



Upcoming Requests for Proposals

PBI – Food, Beverage & Retail Concession Agreements (2 Opportunities)

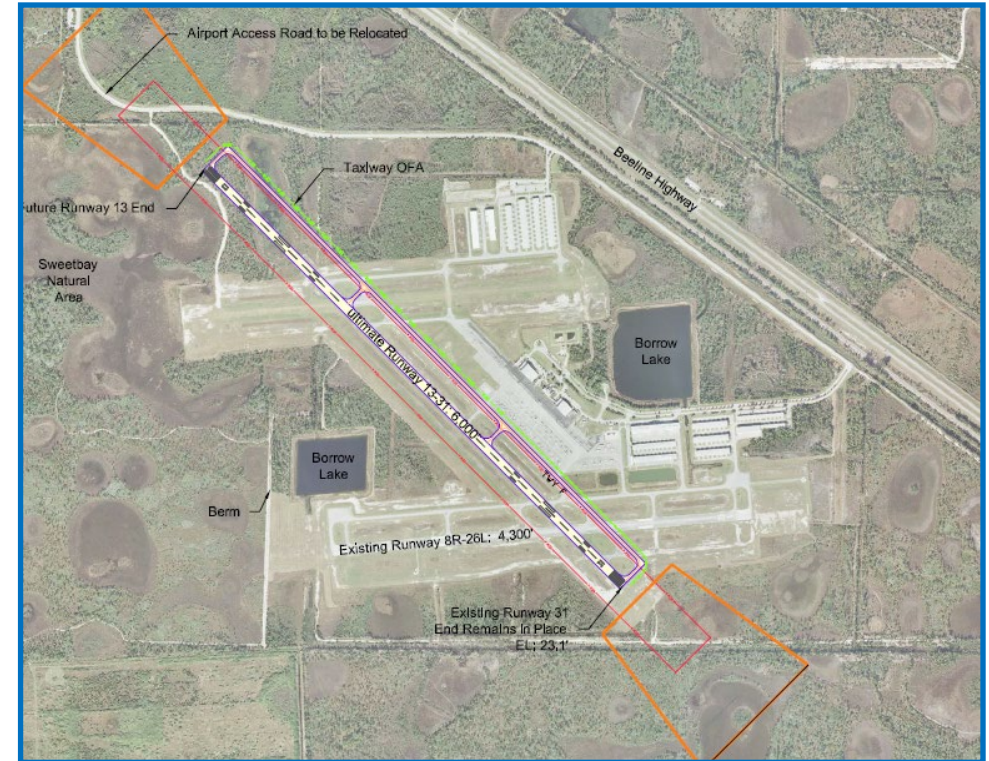
▪ Program Goals

- **SOPHISTICATED**, but **NOT EXCLUSIVE**, concepts that provide a sense of place through innovative design features, creating engaging customer experiences
- Immerse customers in the sights, smells, sounds and tastes of Palm Beach County/South Florida
- Focus on local, regional, and national concepts for food/beverage
- Incorporate local/regional products whenever possible
- Provide a **VARIETY** of options for all price points, including healthy, kosher and vegan options.
- Include sustainable practices through packaging, reduction of food waste, use of energy efficient appliances, etc...
- **ELEVATE THE CUSTOMER EXPERIENCE**

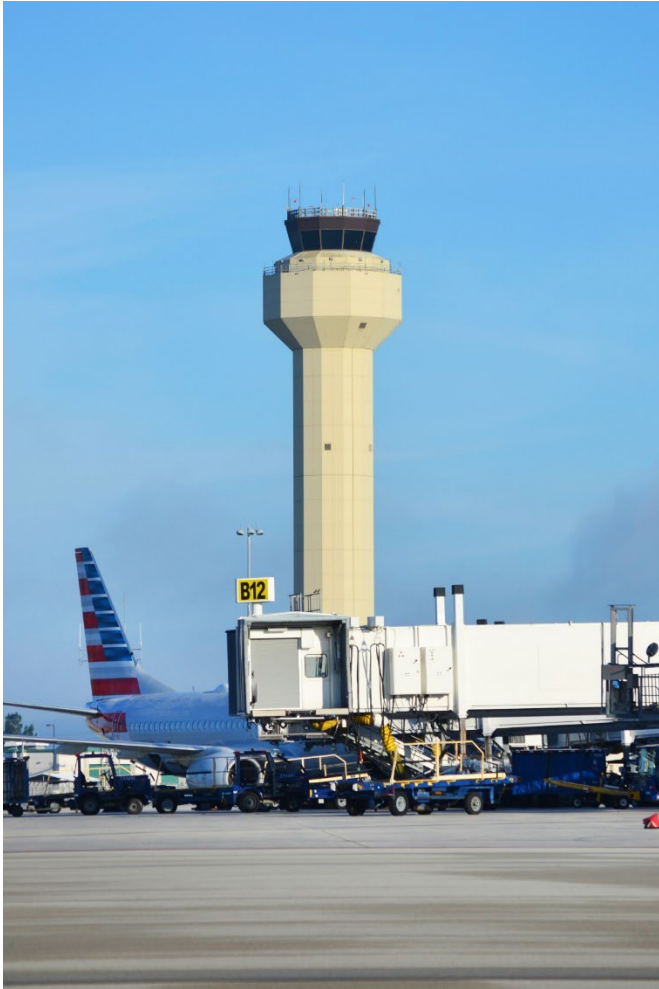
On-Going and Future General Aviation Airport Projects

- F45 Ramp Expansion
- LNA RWY 10L-28R Surface Treatment
- LNA West Apron Rehab
- LNA Southside Redevelopment Phase 3 & 4
- PHK Fuel Farm

- LNA Safety Assessment
- LNA Master Plan Update
- LNA Part 150 Noise Compatibility Study
- F45 EA Runway 14/32 Extension



Questions?



Contact Info:

Gary M. Sypek
Senior Deputy Director of Airports
Palm Beach County Department of Airports
(561)471-7474
gsypek@pbia.org

