

VISION 2050



LONG RANGE TRANSPORTATION PLAN (LRTP)

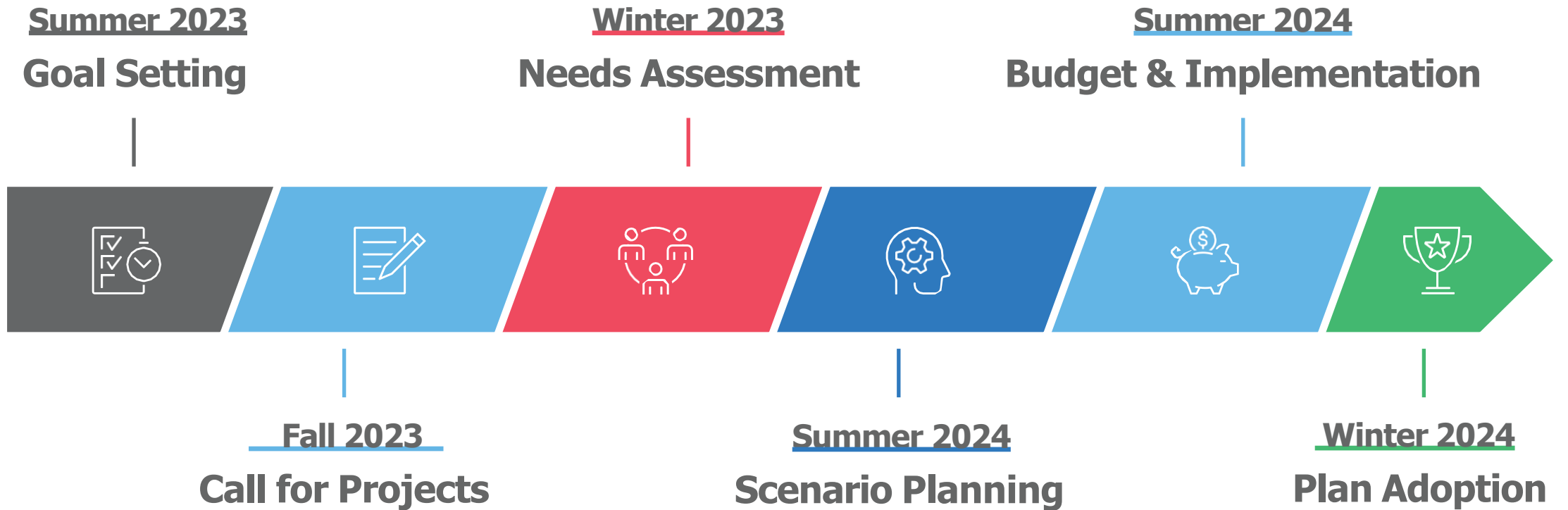


**LONG RANGE
TRANSPORTATION
PLAN (LRTP)**

July 10th TAC Project Funding Preview

- TPA Prioritization
- Project Selection & Funding
- Implementation & LRTP
Maintenance Considerations

The Timeline





PALM BEACH
Transportation
Planning Agency

Core Functions:





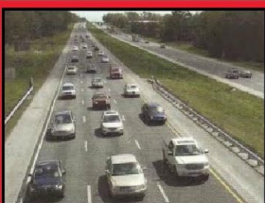
- **PLAN** the
Transportation
System
- Prioritize **FUNDING**

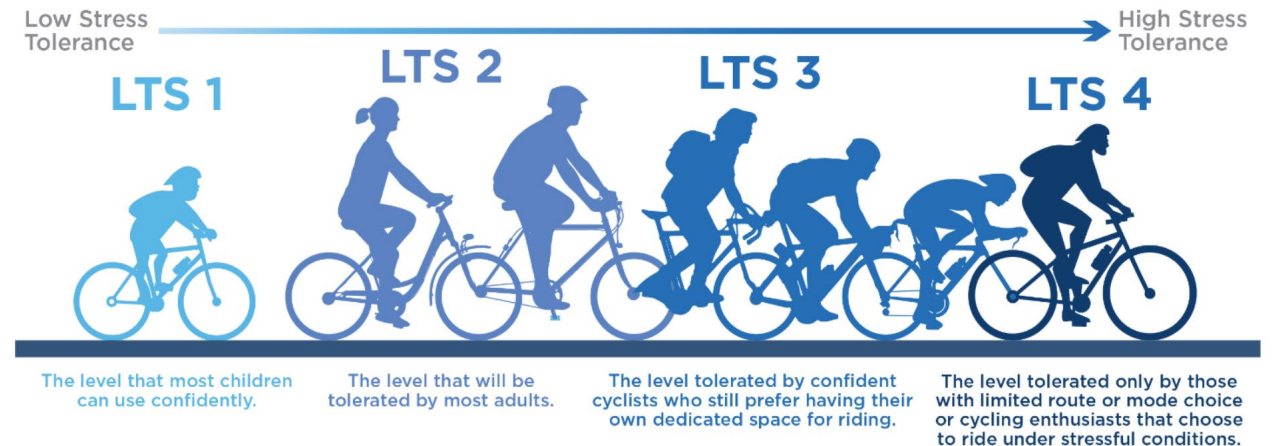
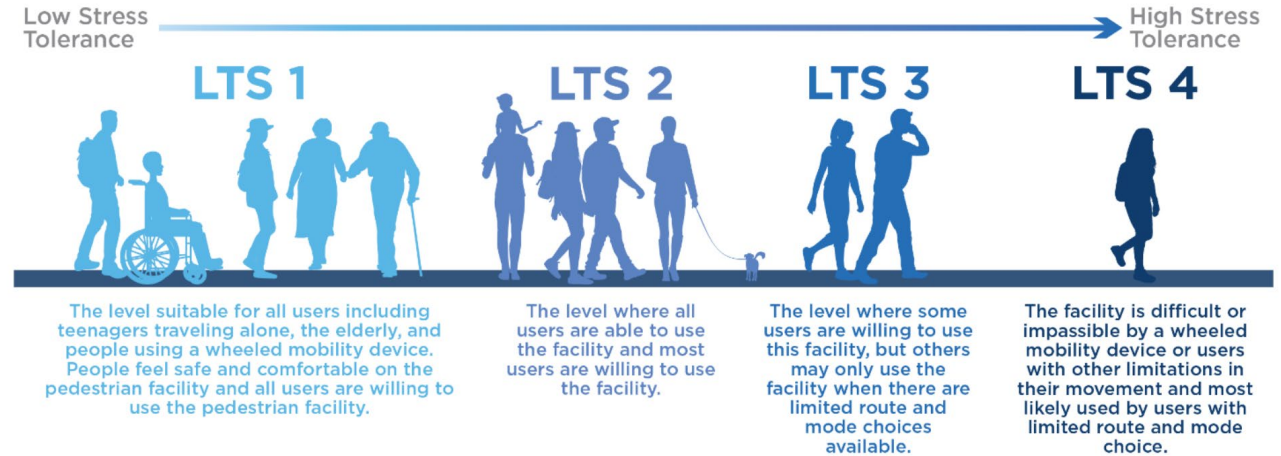


Projects: Where Mission Meets Vision

Fund Projects that IMPROVE Transportation

For ALL Modes

| | |
|-------|--------------------------------------------------------------------------------------|
| LOS B |  |
| LOS C |  |
| LOS D |  |
| LOS E |  |
| LOS F |  |



2045 LRTP Priorities:

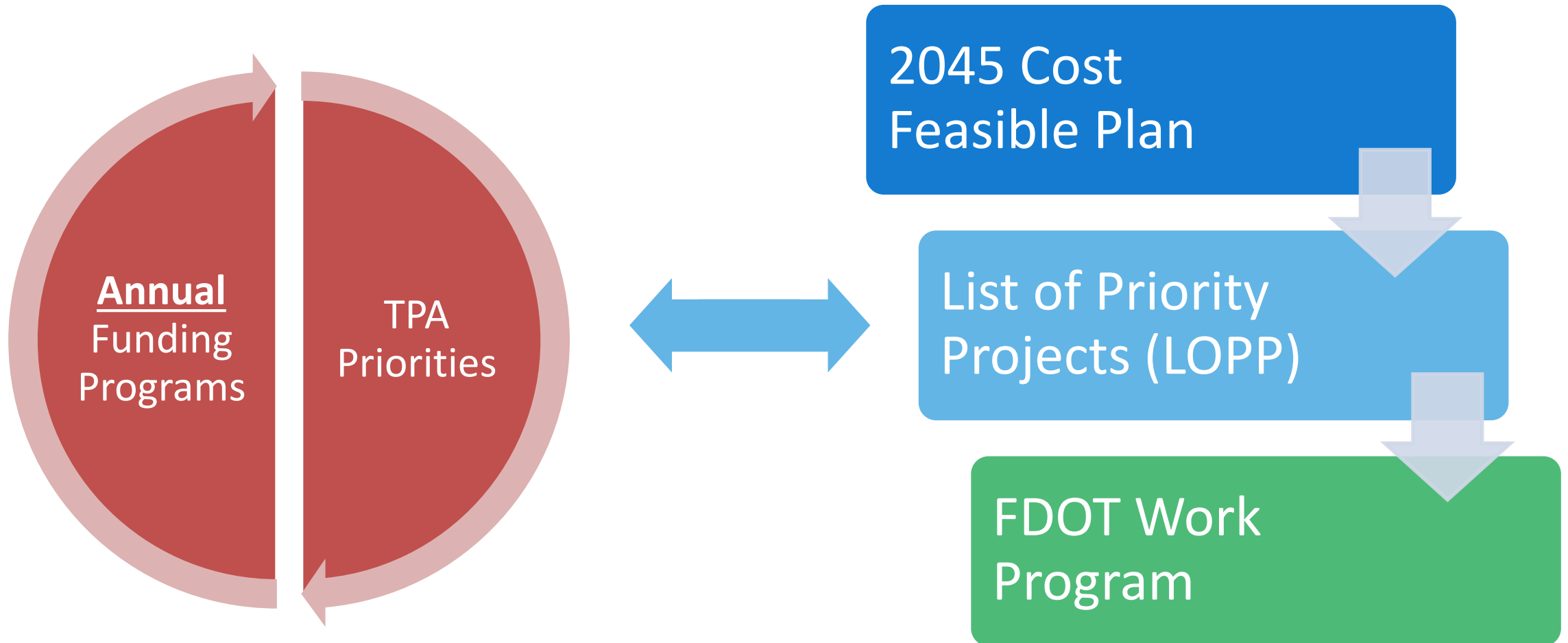
Enhanced Transit
Not Fully Cost Feasible (Study)

Annual Funding Programs
Not Committed (SRM, LI & TA)

Legacy Major Projects



2045 LRTP Administration of Annual Funding Programs



2050 Approach: Prioritize Planning

...Because Vetting a Project is
NOT the Same as Planning a
Project

Vetting: Assessing items
are federal-aid eligible

Planning: Defining and
testing feasibility of
alternatives



IMAGE CREDIT: MIAMI HERALD

Commit to Successful Planning, Before...

| Individual Project Cost Summary Table | | | | | | |
|---------------------------------------|-----------------|-------------|--------------------------------------------|----------|-----------------|------------------|
| L RTP ID #: | FDOT0083 | L RTP ID #: | US 27 from SR 80/US 27 to SR 715 extension | | | |
| Phase | Cost (\$FY24) | CFP | | | | |
| | | FY 25 | FY 26-30 | FY 31-35 | FY 36-40 | FY 41-50 |
| PDE | \$3,500 | | \$3,955 | | | |
| PE | \$6,000 | | | | | |
| ROW | \$4,900 | | | | | |
| CST | \$50,200 | | | | | |
| Total | \$64,600 | | | | Total | \$3,955 |
| | | | | | Unfunded | \$122,200 |

“Study”

| Individual Project Cost Summary Table | | | | | | |
|---------------------------------------|-----------------|-------------|--------------------------------------------|----------|-----------------|-----------------|
| L RTP ID #: | FDOT0083 | L RTP ID #: | US 27 from SR 80/US 27 to SR 715 extension | | | |
| Phase | Cost (\$FY24) | CFP | | | | |
| | | FY 25 | FY 26-30 | FY 31-35 | FY 36-40 | FY 41-50 |
| PDE | \$3,500 | | \$3,955 | | | |
| PE | \$6,000 | | | \$7,980 | | |
| ROW | \$4,900 | | | \$6,517 | | |
| CST | \$50,200 | | | | \$80,822 | |
| Total | \$64,600 | | | | Total | \$99,274 |
| | | | | | Unfunded | |

“Committed”

Committing
Design, ROW
& Construction

Vision 2050 Project Types

Committed
Projects

Prioritized Projects (Study or Committed) That Are Cost Feasible

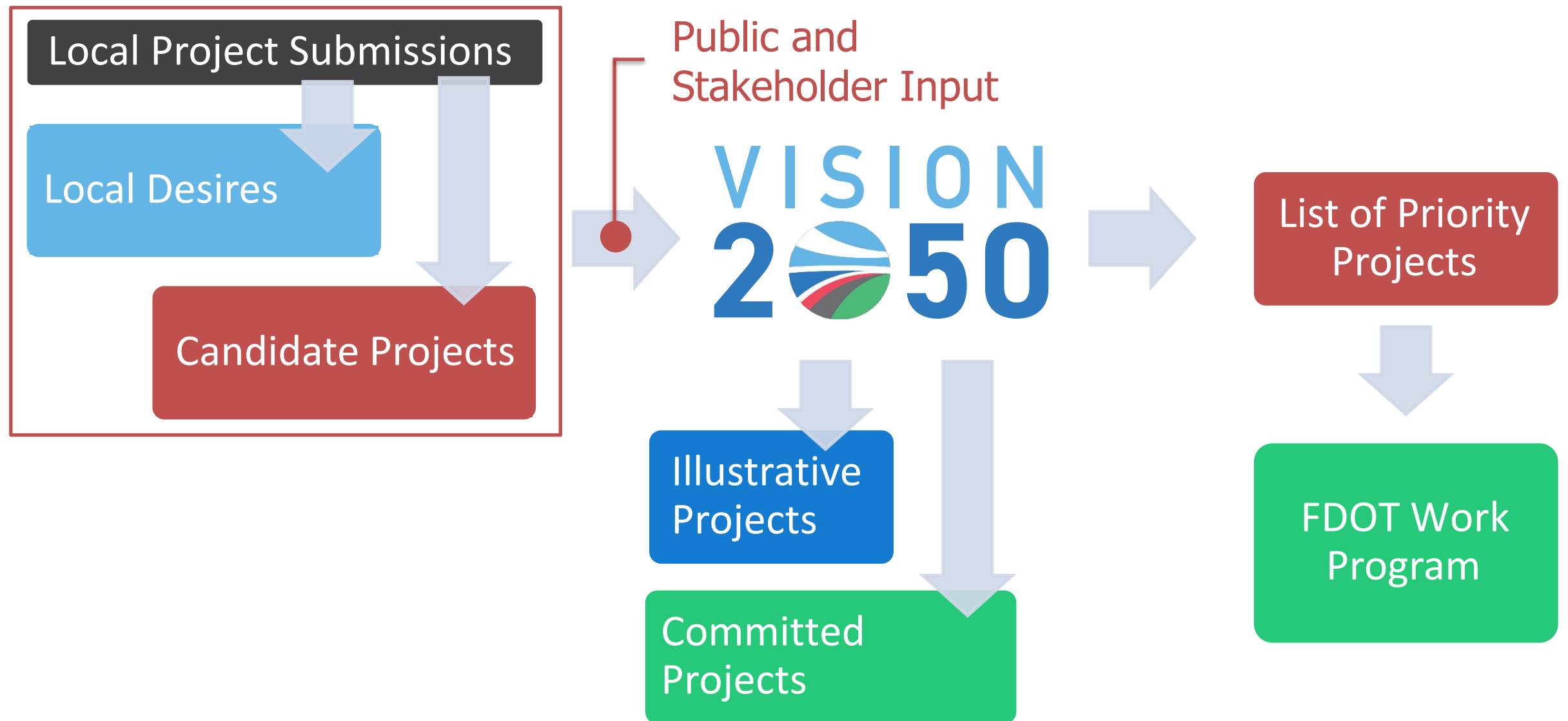
Illustrative
Projects

Prioritized Projects (No Funding)

Local Desires

Referenced,
Not TPA Supported

2050 Prioritization Process



TPA Prioritization



Cost Feasible Plan indicates the TPA's "Support" for the use of Federal & State funding.



Other "Local Desires" are referenced, but not supported. These projects may be administered and funded locally.

"Local Desires" May Be Supported in the Future through:

- Alignment with the TPA's Goals & Objectives
- Discretionary Funding Application (ie. "TA")
- Successful Planning to Demonstrate Feasibility



Questions?

PalmBeachTPA.org/LRTP

