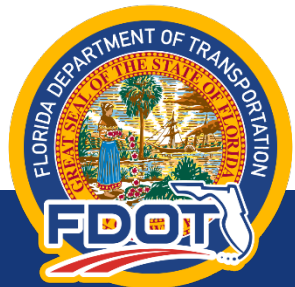




Bicycle and Pedestrian Safety Improvements for State Road A1A in Palm Beach County

June 2024

Presented by FDOT District Four
Presented to the Palm Beach TPA

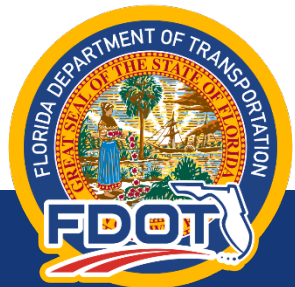


Agenda

1. Immediate Safety Improvements
2. Phase 1 Safety Improvements Feasibility Study
3. Current Projects in the Five-Year Work Program:
 - A. 446176-1-52-01 A1A from south of John D MacArthur Beach State Park Entrance to Portage Landing North (North Palm Beach)
 - B. 446175-1-52-01 A1A from north of Emerald Beach Way to south of Royal Palm Way (Palm Beach)
 - C. 448417-1-52-01 A1A from north of Ibis Way to north of Emerald Beach Way (Palm Beach)
 - D. 447663-1-52-01 A1A from south of Lake Ave to north of Ibis Way (Palm Beach and Lake Worth Beach)
 - E. 447662-1-52-01 A1A from Linton Blvd. to East Atlantic Ave. (Delray Beach)
 - F. 444477-1-52-01 A1A from south of Grand Ct. to south of Linton Blvd. (Highland Beach and Delray Beach)
 - G. 447661-1-52-01 A1A from SE 31st to south of Grand Court (Boca Raton)



Immediate Safety Improvements for State Road A1A in Palm Beach County



Improvements to be Implemented by Traffic Operations

Municipality	Limits	Existing Condition	Improvements
Delray Beach	Beach Drive to Pelican Lane	Unmarked shoulder on both sides	Installing "Share the Road" warning signs
Gulf Stream	Pelican Lane to Little Club Road	No shoulder	Installing Sharrows
Boynton Beach	Little Club Road to Cardinal Drive/Briny Breezes Boulevard	Unmarked shoulder on both sides	Installing "Share the Road" warning signs
Briny Breezes	Cardinal Drive/Briny Breezes Boulevard to Cordova Avenue	Unmarked shoulder on both sides	Installing "Share the Road" warning signs
Ocean Ridge	Cordova Avenue to Boynton Beach Inlet	Unmarked shoulder on both sides	Installing "Share the Road" warning signs
Manalapan	Boynton Beach Inlet to East Ocean Avenue	No shoulder	Installing Sharrows
Palm Beach	3500 South Ocean Boulevard to Lake Worth Beach Park	Unmarked shoulder on both sides	Installing "Share the Road" warning signs

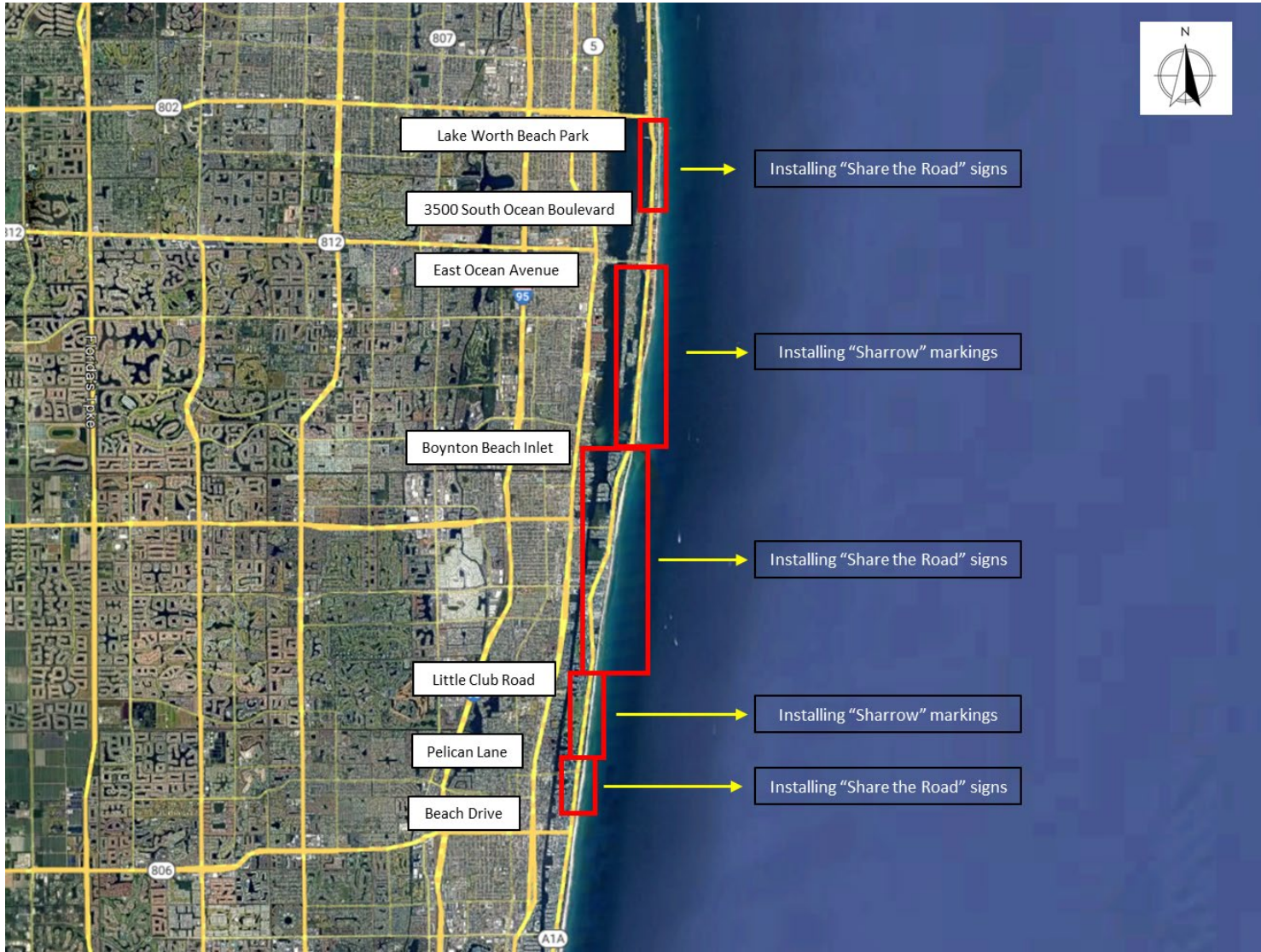


“Sharrow”
Markings

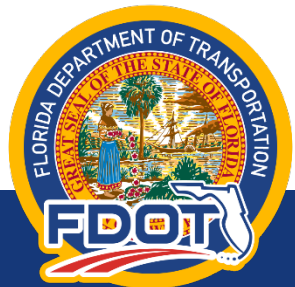


“Share the Road”
Signs





Phase 1 Safety Improvements Feasibility Study for State Road A1A in Palm Beach County



Scope of Services

- 1 • REVIEW OF TRANSPORTATION PLANS, DATA, AND STUDIES
- 2 • DATA COLLECTION AND ASSESSMENT
- 3 • DETERMINE BICYCLE AND PEDESTRIAN NEEDS AND GOALS - CORRIDOR AND AREA-SPECIFIC
- 4 • IDENTIFY AND EVALUATE THE PERFORMANCE OF POTENTIAL SHORT-TERM IMPROVEMENTS AND MID- TO LONG-TERM STRATEGIES
- 5 • PLANNING-LEVEL CONCEPTS AND COST ESTIMATES
- 6 • RECOMMENDATIONS SUMMARY
- 7 • PROJECT MANAGEMENT/COORDINATION



Schedule

	March	April	May	June	July	August	September	October
TASK								
TASK 1 - REVIEW OF TRANSPORTATION PLANS, DATA, AND STUDIES	[Blue bar]		[Blue bar]					
TASK 2 - DATA COLLECTION AND ASSESSMENT	[Red bar]		[Red bar]	[Red bar]				
TASK 3 – DETERMINE BICYCLE AND PEDESTRIAN NEEDS AND GOALS - CORRIDOR AND AREA-SPECIFIC		[Green bar]	[Green bar]					
TASK 4 - IDENTIFY POTENTIAL SHORT-TERM IMPROVEMENTS AND MID-TO LONG-TERM STRATEGIES		[Purple bar]	[Purple bar]	[Purple bar]				
TASK 5 - PLANNING-LEVEL CONCEPTS AND COST ESTIMATES					[Light Blue bar]			
TASK 6 - RECOMMENDATIONS SUMMARY /IMPLEMENTATION STEPS FOR SHORT-, MID-, AND LONG-TERM STRATEGIES			[Orange bar]	[Orange bar]				
TASK 7 - PROJECT MANAGEMENT/COORDINATION	[Olive bar]		[Olive bar]	[Olive bar]				
TASK 8 - DOCUMENTATION/REPORT							[Grey bar]	

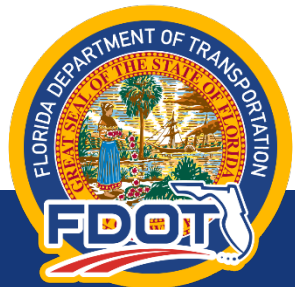


Potential Countermeasures Currently Under Evaluation

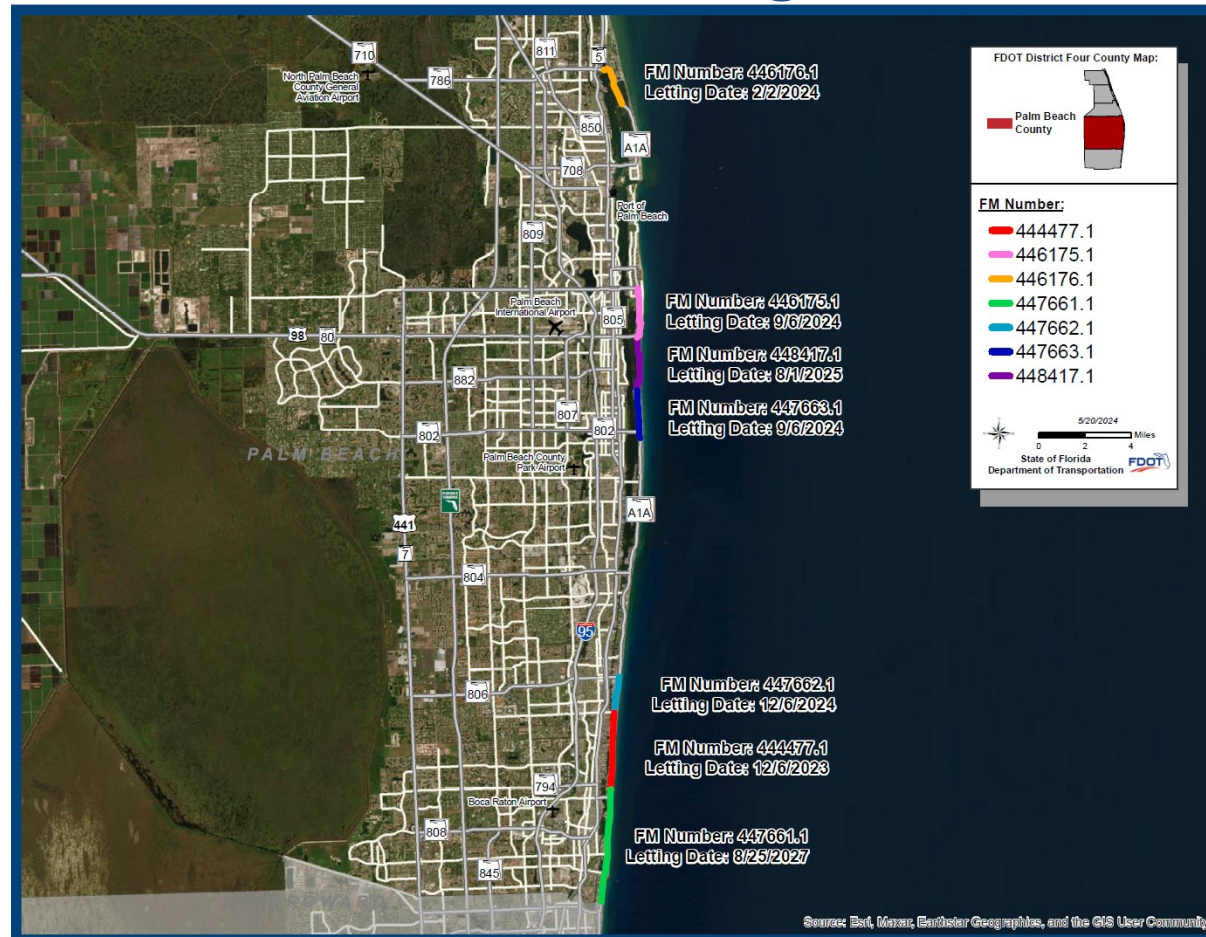
- Provide curb extensions to reduce pedestrian crossing distances and vehicle turning speeds
- Install/upgrade pedestrian lighting at crosswalks
- Widen shoulders where feasible and mark shoulders for bicycles
- Install sharrow pavement markings
- Replace worn and faded detectable warning surfaces at crosswalk locations
- Install high emphasis crosswalks at signalized intersections
- Restripe crosswalks to improve visibility



Pavement Resurfacing Projects in the Five-Year Work Program



Location Map of Pavement Resurfacing Projects in the Five-Year Work Program





Florida Department of
TRANSPORTATION

**State Road (SR) A1A/Ocean Blvd from SE 31 Street to South of Grand Court
Resurfacing, Restoration, and Rehabilitation (RRR) Project
Financial Project ID: 447661-1-52-01**



Henry Oaikhena, PE.
FDOT Project Manager
FDOT District Four
Henry.Oaikhena@dot.state.fl.us
(954) 777-4445

Project Location

Proposed Improvements:

- Resurface roadway and existing shared use path
- Reduce travel lane width to 11 feet to accommodate 6-foot buffered bicycle lanes
- Install sharrow pavement markings on the bridge
- Fill in sidewalk gaps
- “STOP HERE FOR PEDESTRIANS” signs at midblock crossings



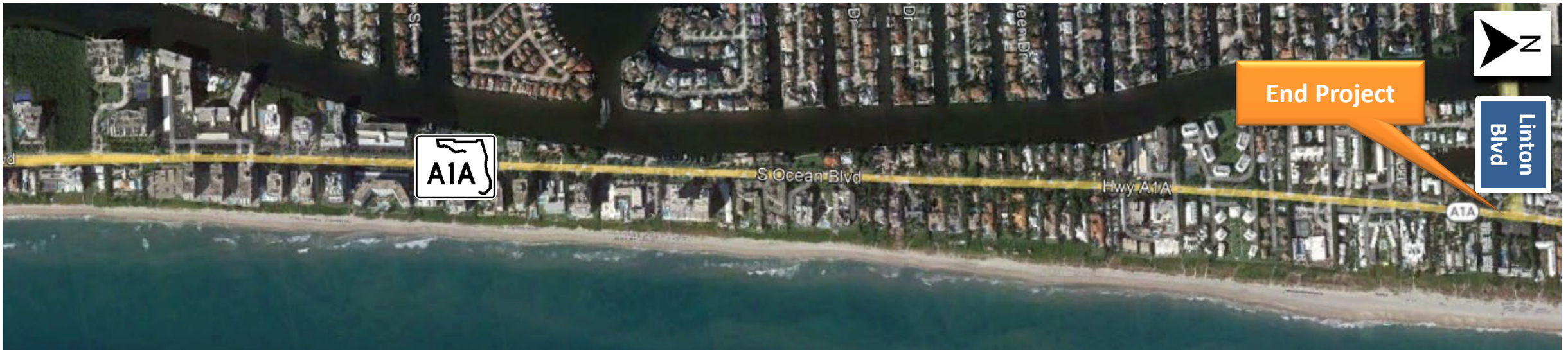
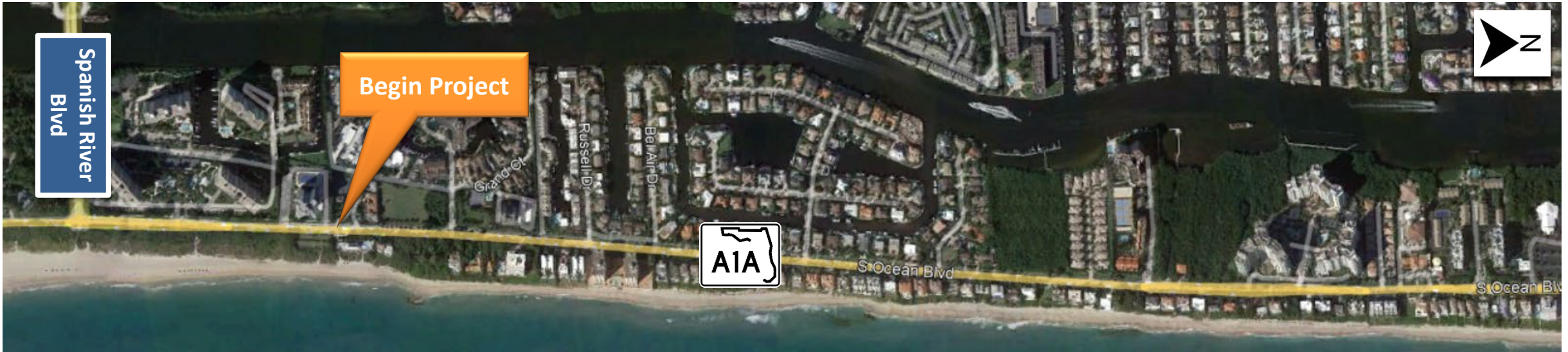
**State Road A1A/Ocean Blvd from
South of Grand Court to South of Linton Blvd
Financial Management Number: 444477-1-52-01**



Brad Salisbury, PE.
FDOT Project Manager
FDOT District Four
Brad.Salisbury@dot.state.fl.us
(954) 777-4160



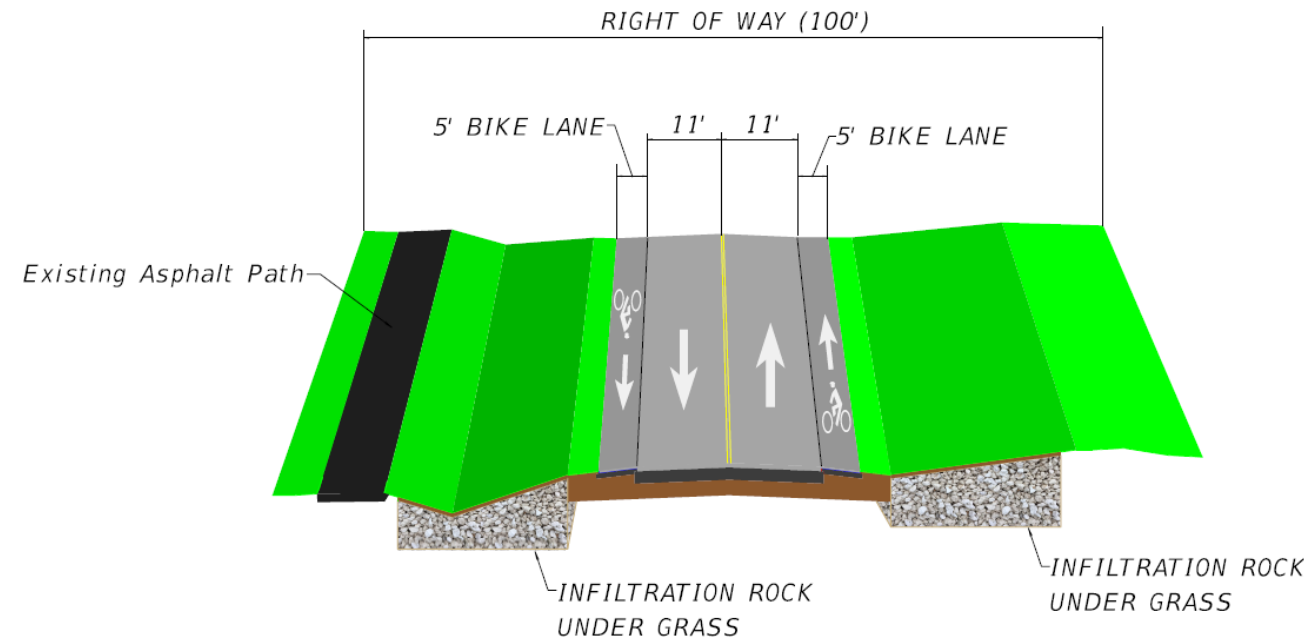
Project Limits: State Road A1A/Ocean Blvd from South of Grand Court to South of Linton Blvd



Safety Improvements

Proposed Improvements:

- Roadway widening to provide 5-foot Bike lanes
- Improved drainage to reduce ponding existing bike and travel lanes
- Upgrade asphalt paths to meet ADA standards
- Update midblock pedestrian crossing signing to the latest standards
- Added more no passing zone marking and signage in known areas of concern





Florida Department of
TRANSPORTATION

State Road A1A Roadway Improvements from Linton Boulevard to East Atlantic Avenue Financial Management Number: 447662-1-52-01



Haiyan Ou, P.E.
FDOT Project Manager
FDOT District Four
Haiyan.Ou@dot.state.fl.us
(954) 777-4641

Safety Improvements

Proposed Improvements:

- Existing bicycle lanes to remain
- Upgrading pedestrian lighting at:
 - Linton Boulevard, Casuarina Road and East Atlantic Avenue signalized intersections
 - Existing midblock crossings to remain
- Upgrading Casuarina Road pedestrian signal features for ADA compliance
- Upgrading 4 midblock crossings to Rectangular Rapid Flashing Beacons (RRFBs)



**SR-A1A / South Ocean Boulevard
From South of Lake Avenue to North of Ibis Way
FPID: 447663-1-52-01**



Vandana Nagole, PE.
FDOT Project Manager
FDOT District Four
Vandana.Nagole@dot.state.fl.us
(954) 777-4281

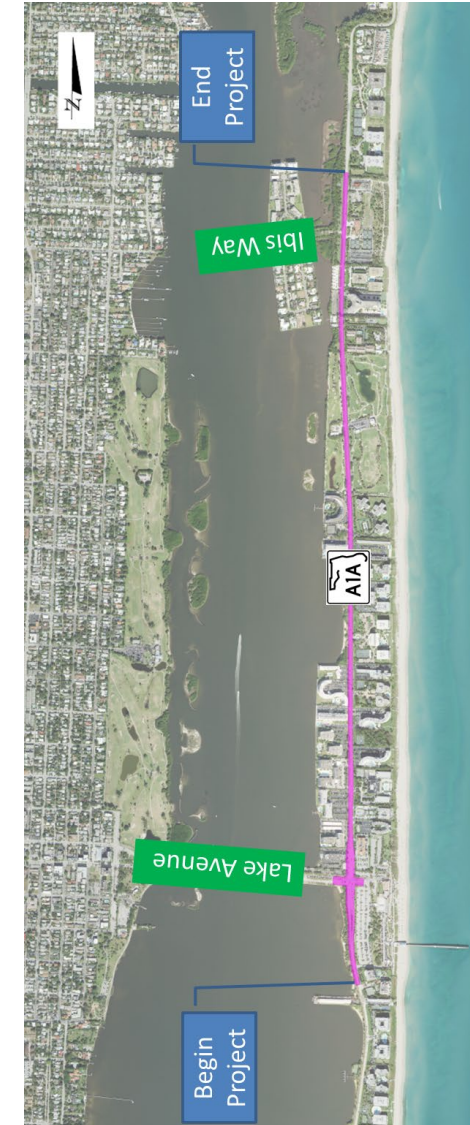
Project Location



Safety Improvements

Proposed Improvements:

- Increase sidewalk width from 5 feet to 6 feet
- Increase paved shoulder width from 3 feet to 5 feet
- Two new midblock pedestrian crossings at:
 - Raymond Floyd Golf Course
 - Phipps Ocean Park



SR-A1A / South Ocean Boulevard
From North of Ibis Way to North of Emerald Beach Way
FPID: 448417-1-52-01



Vandana Nagole, PE.
FDOT Project Manager
FDOT District Four
Vandana.Nagole@dot.state.fl.us
(954) 777-4281

Safety Improvements

Proposed Improvements:

- Providing 5-ft bicycle lanes where feasible and sharrow pavement markings where bicycle lanes are not feasible.
- Actuated-flashing beacons with additional signage before Sloan's and Widener's Curves.
- Speed reduction ahead signs before Sloan's and Widener's Curves.



SR A1A

from North of Emerald Beach Way to South of SR-704/Royal Palm Way
Financial Project ID: 446175-1-52-01



Thuc Le, PE.
FDOT Project Manager
FDOT District Four
Thuc.Le@dot.state.fl.us
(954) 777-4552

Safety Improvements

Proposed Improvements:

- Installing sharrow pavement markings
- Replacing broken sidewalks
- Updating lighting at intersections



SR A1A

from South of John D. MacArthur Park Entrance to Portage Landing North
Financial Project ID: 446176-1-52-01



Jeffery Robbert, PE.
FDOT Project Manager
FDOT District Four
Jeffery.Robbert@dot.state.fl.us
(954) 777-4648

Safety Improvements

Proposed Improvements:

- Repaving the existing pavement
- Minor widening and restriping to provide 8-foot designated bike lanes
- Upgrading lighting at signalized intersection
- Upgrading pedestrian signalization at intersection



Current projects aim to:

- Provide 11-foot to 12-foot travel lanes
- Improve bike accommodations on A1A
- Provide properly signed 5-foot to 7-foot marked bicycle lanes on A1A in Palm Beach County
- Provide for sidewalks on both sides of the road
 - 6-foot to 12-foot on west side
 - 6-foot on east wide

