

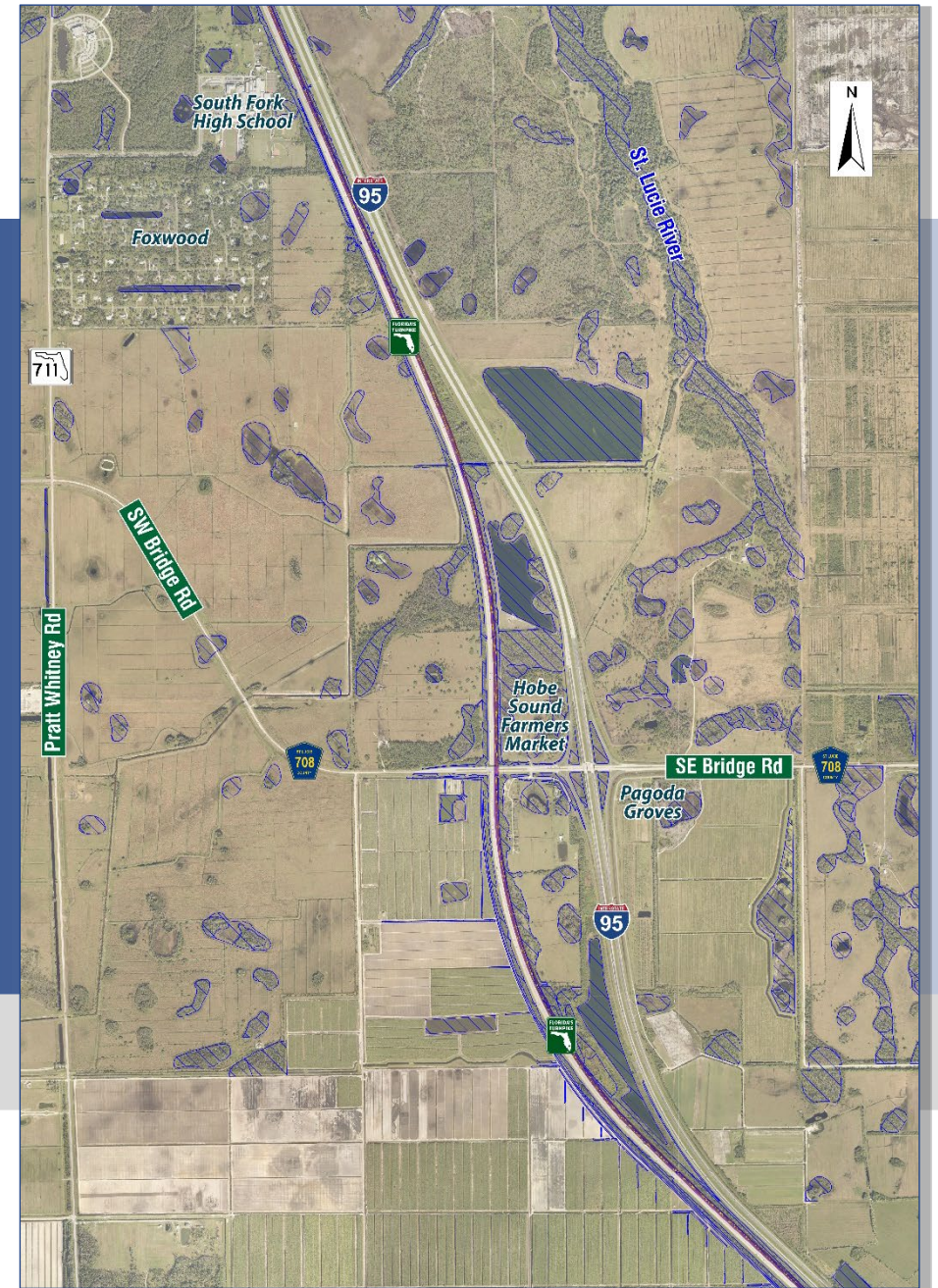
**Palm Beach TPA TAC Meeting  
May 1, 2024**

**Palm Beach TPA Board Meeting  
May 16, 2024**

**Turnpike (SR 91) and I-95 (SR 9)  
Direct Connection Interchange  
PD&E Study in Martin County**

**Financial Project ID #: 446975-1**

**Presenters: Jazlyn Heywood, P.E.  
Bill Howell, P.E.**

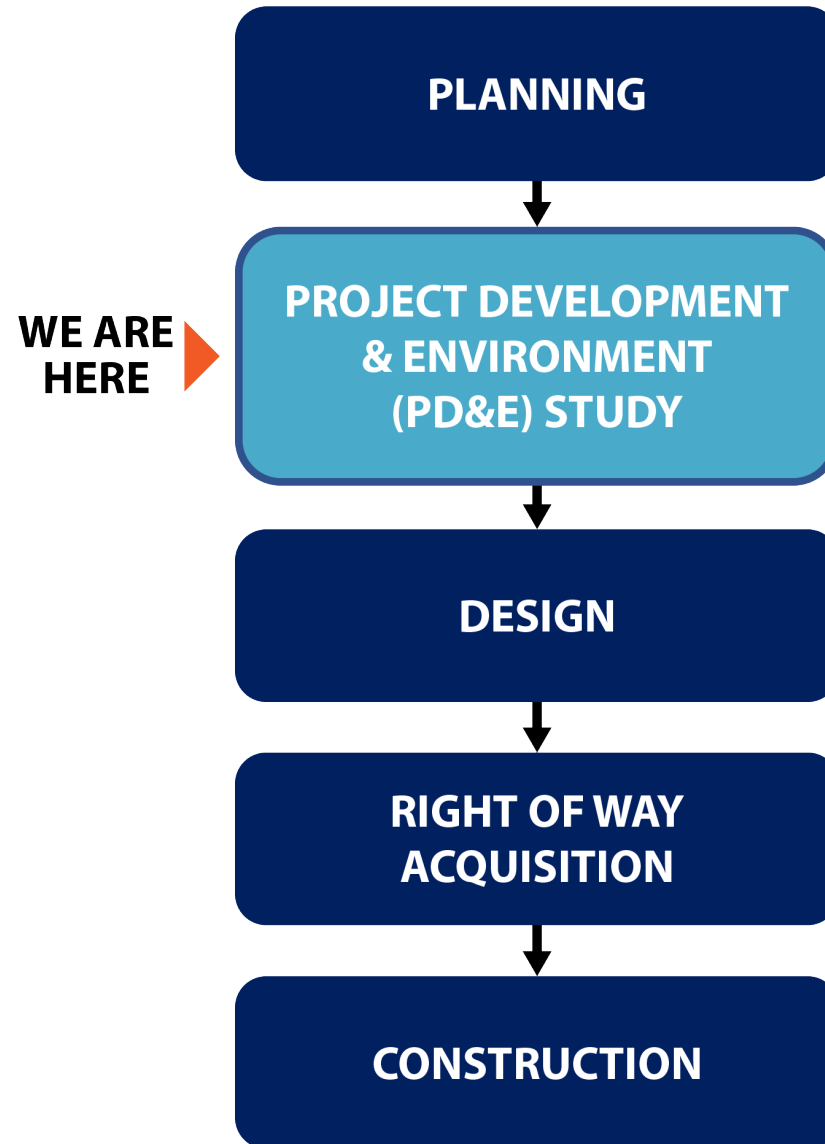


# PRESENTATION OUTLINE

1. Project Development Process
2. Purpose and Need
3. Alternatives
4. Schedule

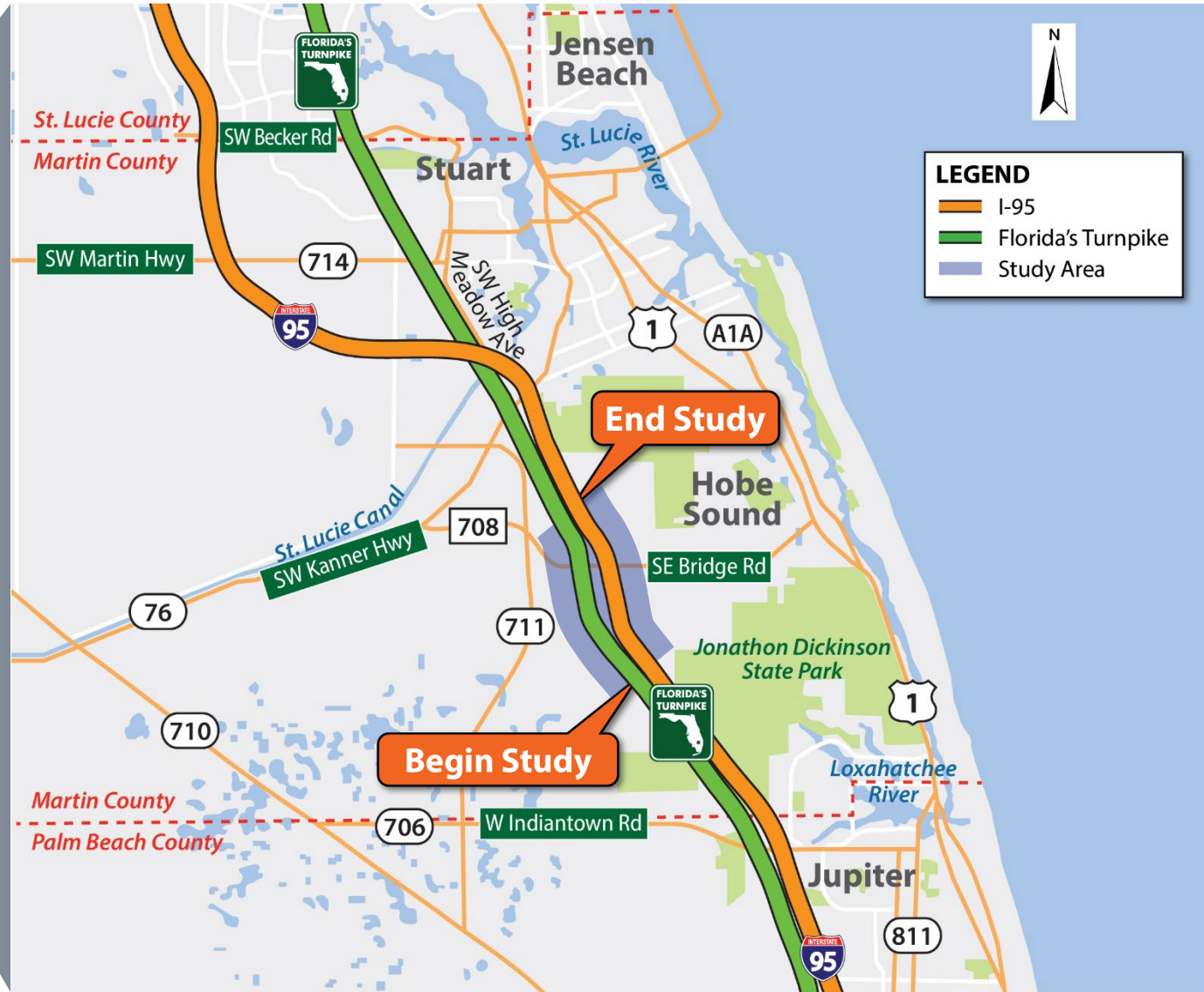


# PROJECT DEVELOPMENT PROCESS



# STUDY LIMITS

Martin County



# PROJECT PURPOSE & NEED

- Purpose and need for a project provide the basis for developing, considering, evaluating, and eliminating project alternatives.
- Project needs include:



## Improve System Linkage

Improve Traffic Operations & Travel Time Reliability

Relieve Congestion on Local Roadway Network



## Enhance Safety



## Enhance Emergency Response & Evacuation

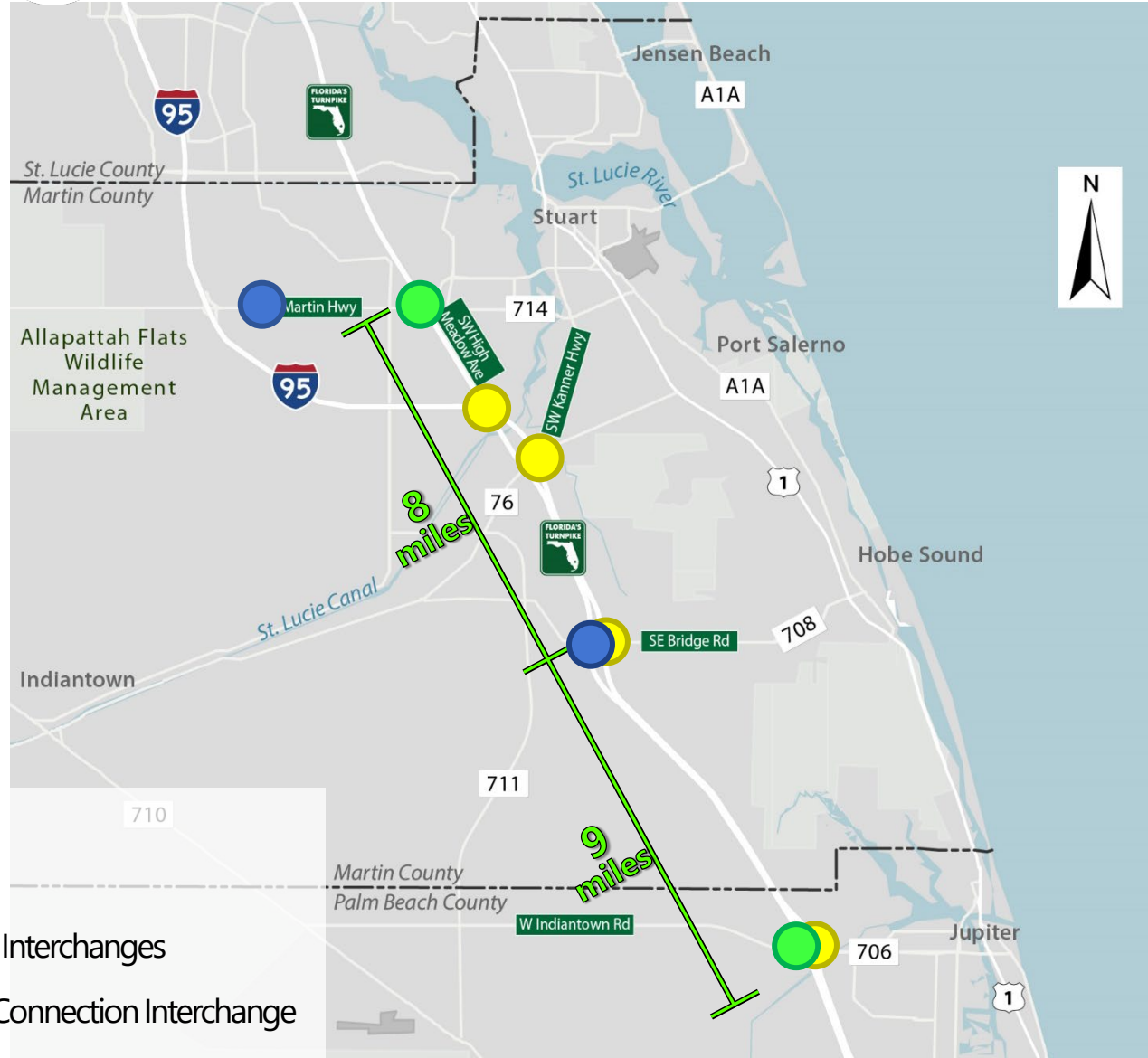
# PROJECT PURPOSE AND NEED – INCREASE SYSTEM LINKAGE

- No existing direct connections between Florida's Turnpike and I-95
- Local roadway network used to switch between facilities at Martin Highway or Indiantown Road

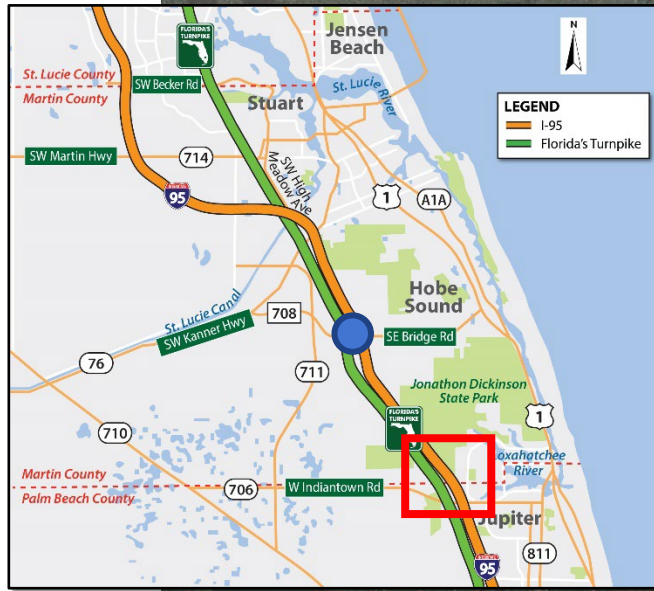


### Legend:

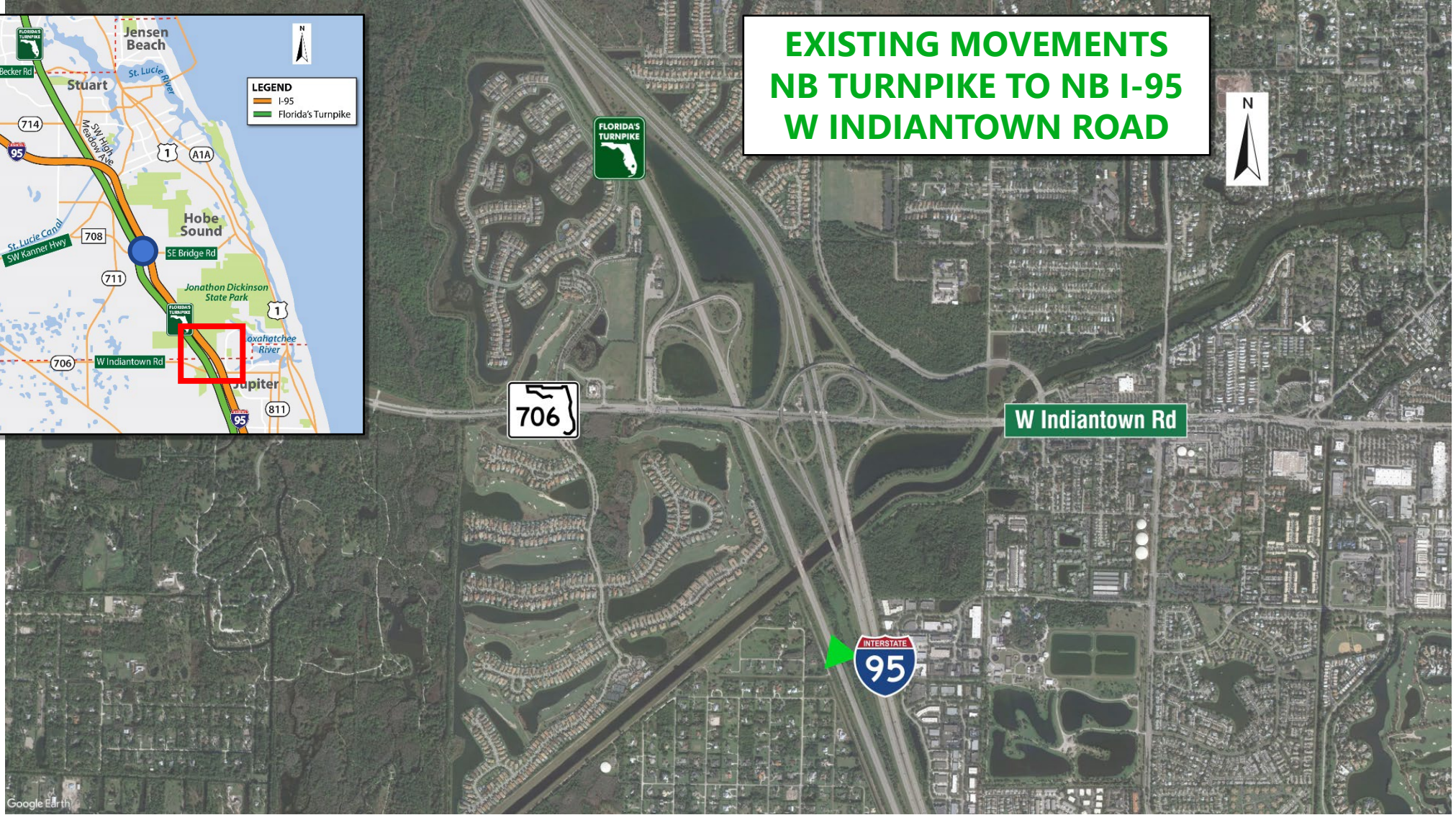
- I-95 Interchanges
- Florida's Turnpike Interchanges
- Proposed Direct Connection Interchange



# PROJECT PURPOSE & NEED – RELIEVE CONGESTION ON LOCAL ROADWAY NETWORK



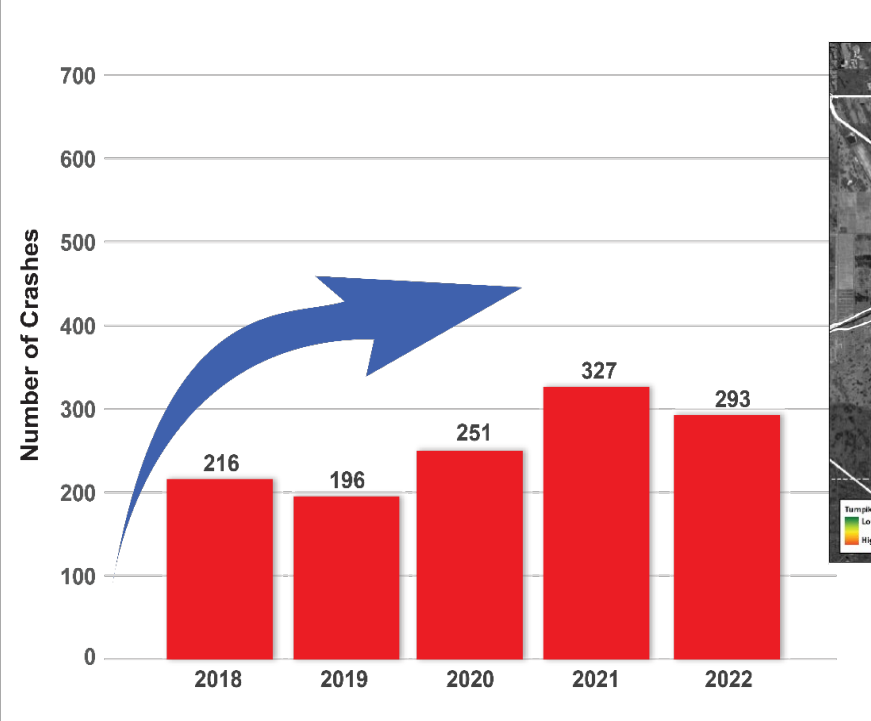
**EXISTING MOVEMENTS  
NB TURNPIKE TO NB I-95  
W INDIANTOWN ROAD**



# PROJECT PURPOSE & NEED - ENHANCE SAFETY



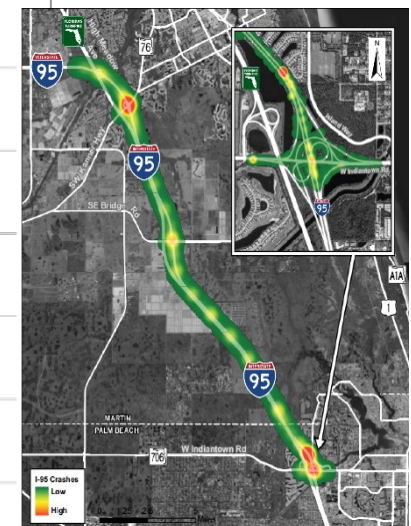
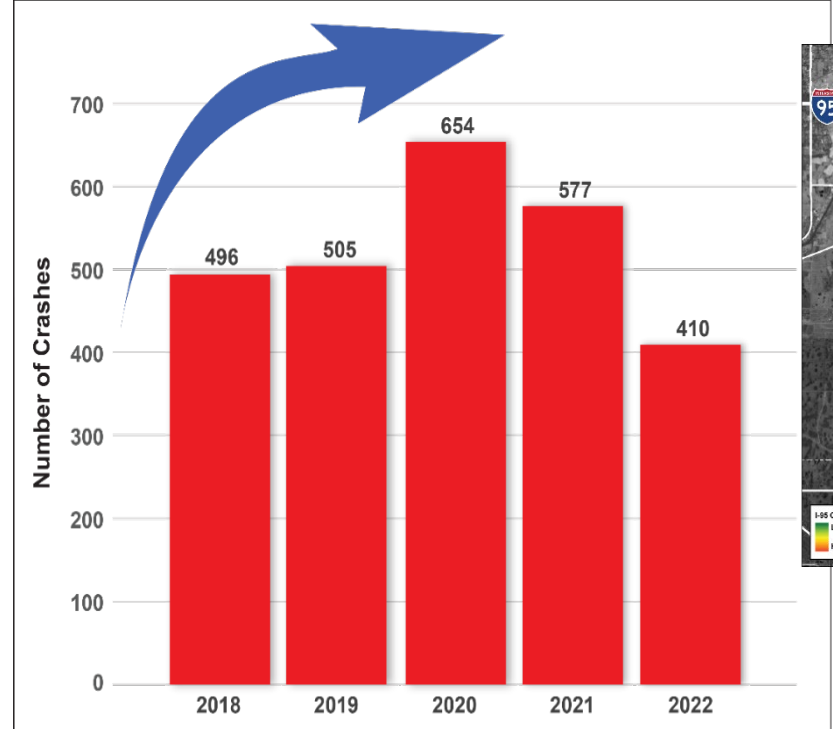
Florida's Turnpike from SW Martin Downs Boulevard (SR 714) to W Indiantown Road (SR 706)



Florida's Turnpike Mainline and Ramps  
 Crash Economic Cost Over 5 Years: **\$107 Million**  
 4 Fatalities, 283 Injuries

Florida's Turnpike at W Indiantown Road (SR 706) Ramp Terminal  
 Crash Economic Cost Over 5 Years: **\$2 Million**  
 0 Fatalities, 11 Injuries

I-95 from SW High Meadow Avenue (CR 713) to W Indiantown Road (SR 706)



I-95 Mainline and Ramps  
 Crash Economic Cost Over 5 Years: **\$354 Million**  
 17 Fatalities, 717 Injuries

I-95 at W Indiantown Road (SR 706) Ramp Terminals  
 Crash Economic Cost Over 5 Years: **\$19 Million**  
 1 Fatalities, 42 Injuries



## 6

### Enhance emergency response and evacuation

- Both Turnpike and I-95 are critical in facilitating traffic movement during emergency response and evacuation periods



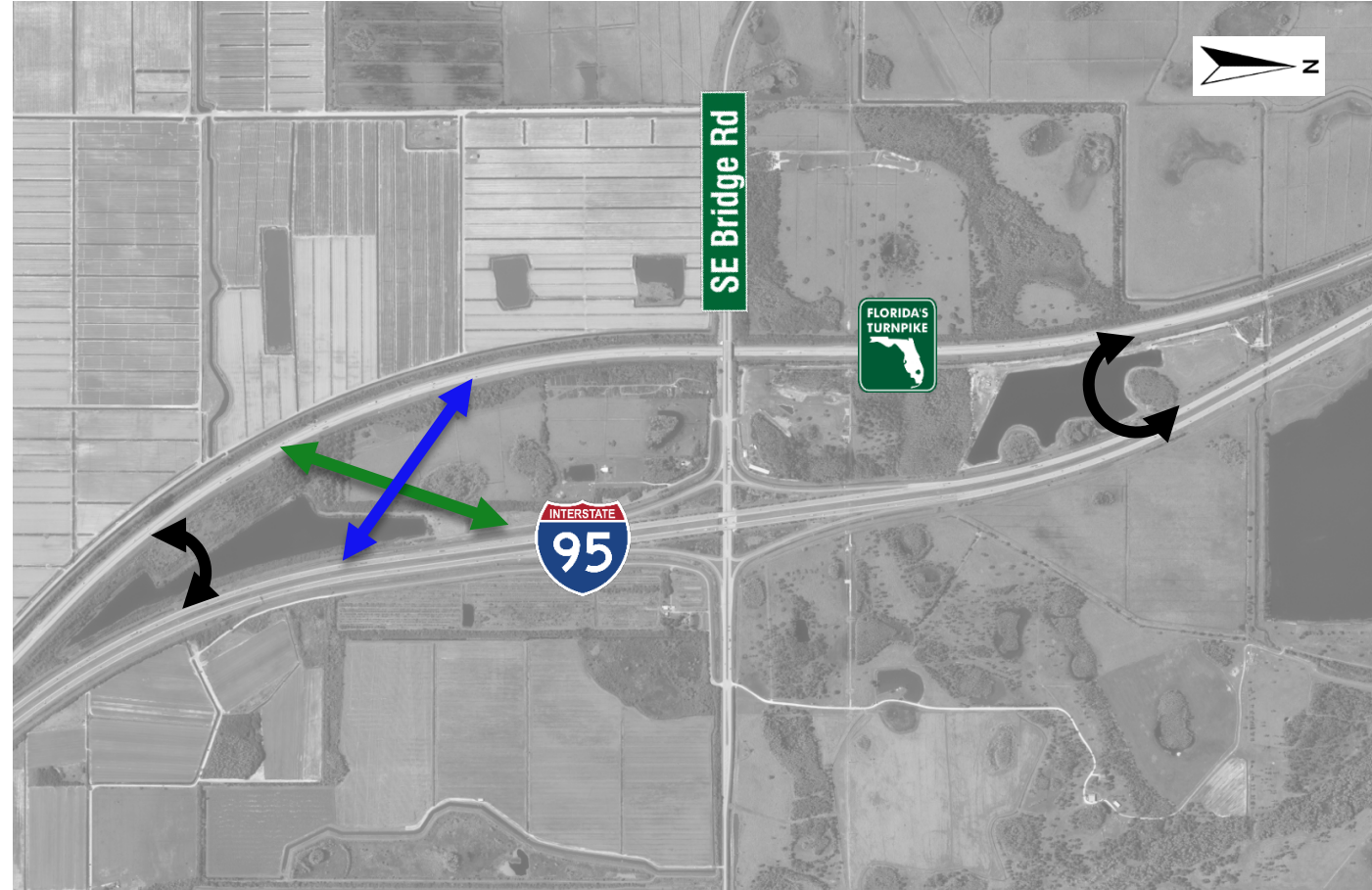
# NEEDED IMPROVEMENTS

- **Direct Connections**

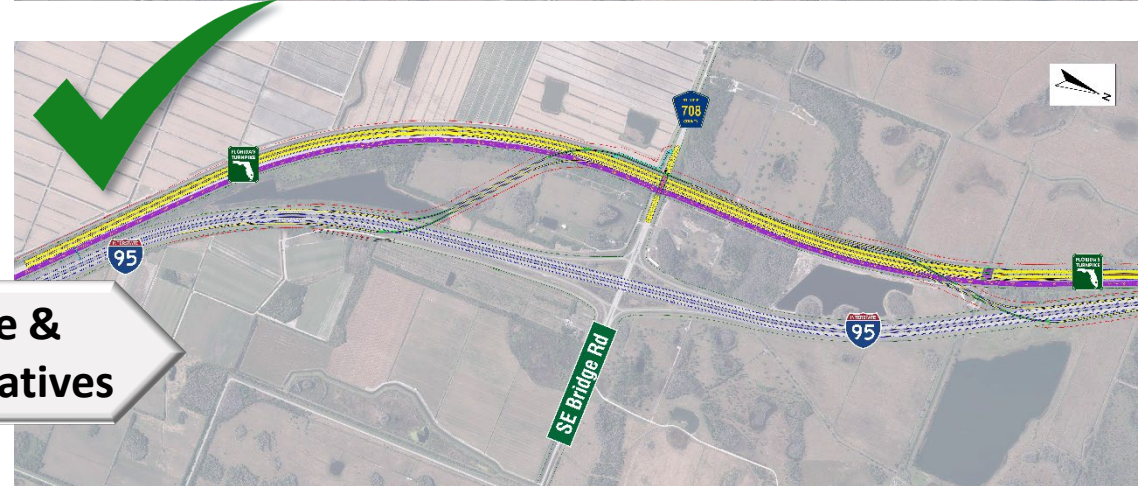
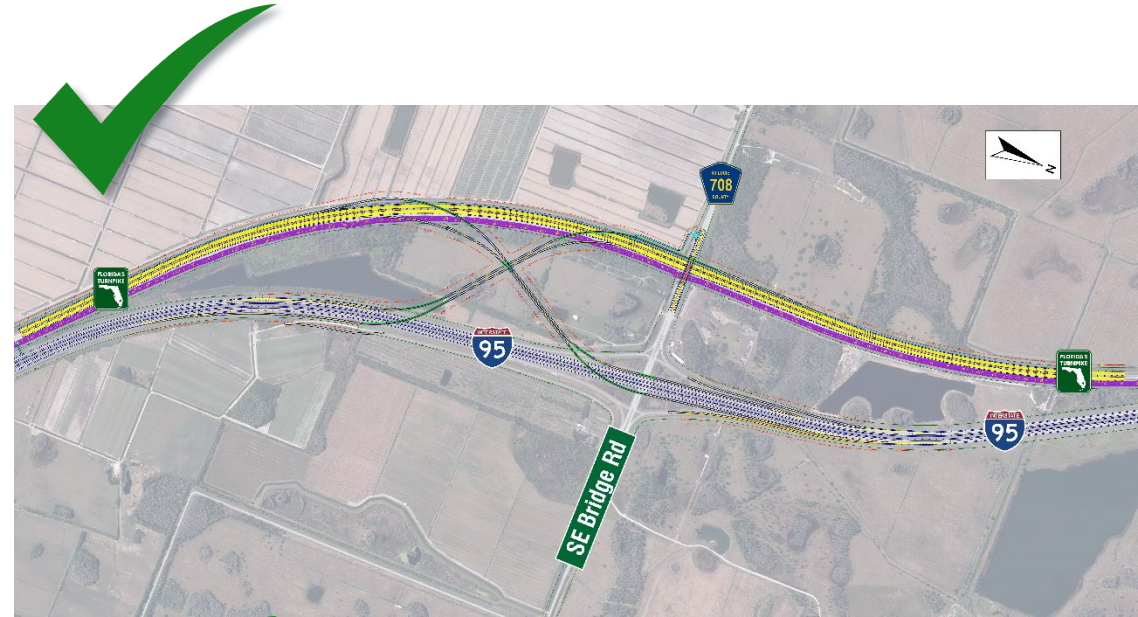
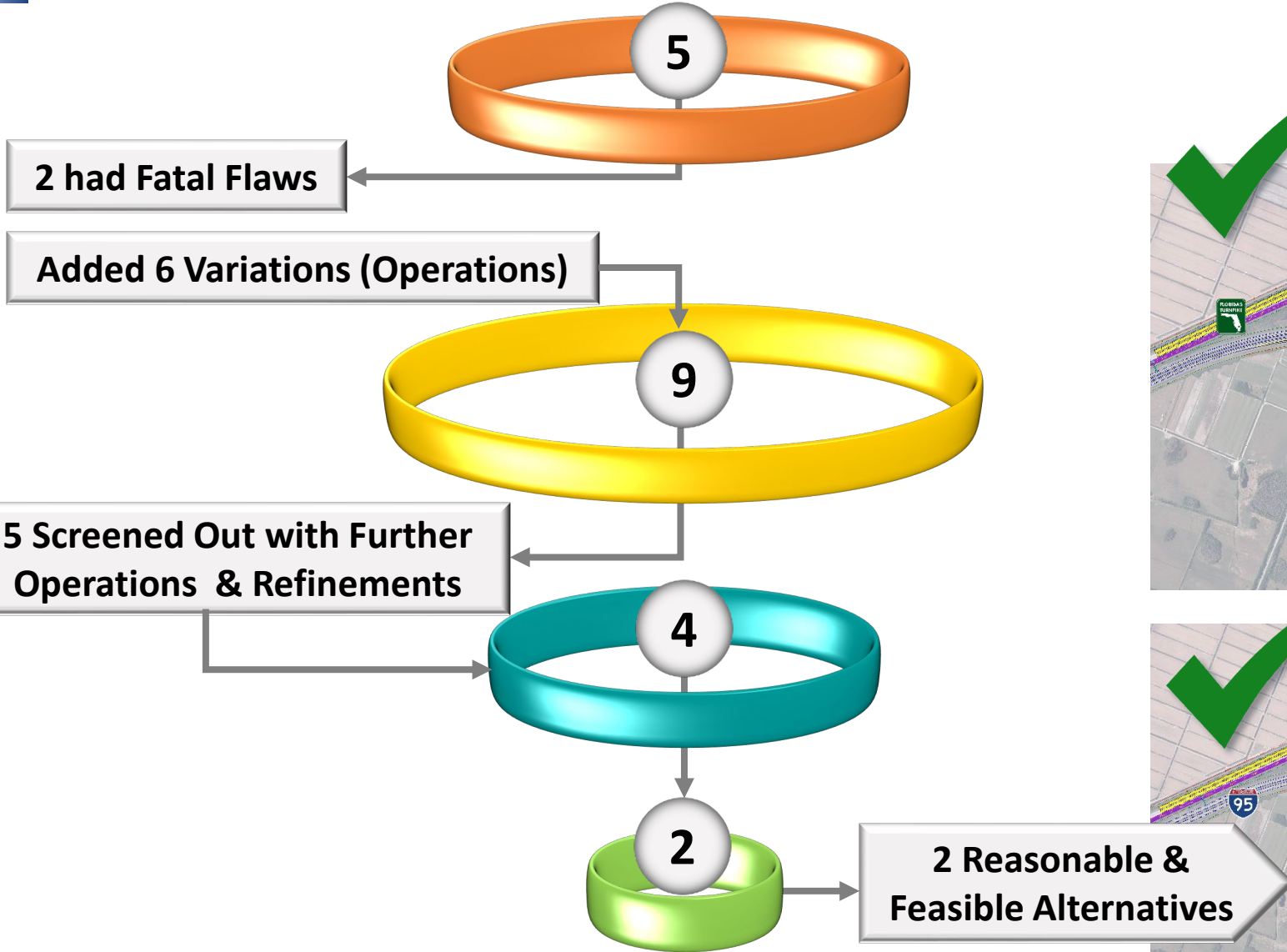
- NB to NB (both directions)
- SB to SB (both directions)

- **Emergency Access Roads**

- For Emergency Vehicles Only
- U-Turns between Turnpike and I-95

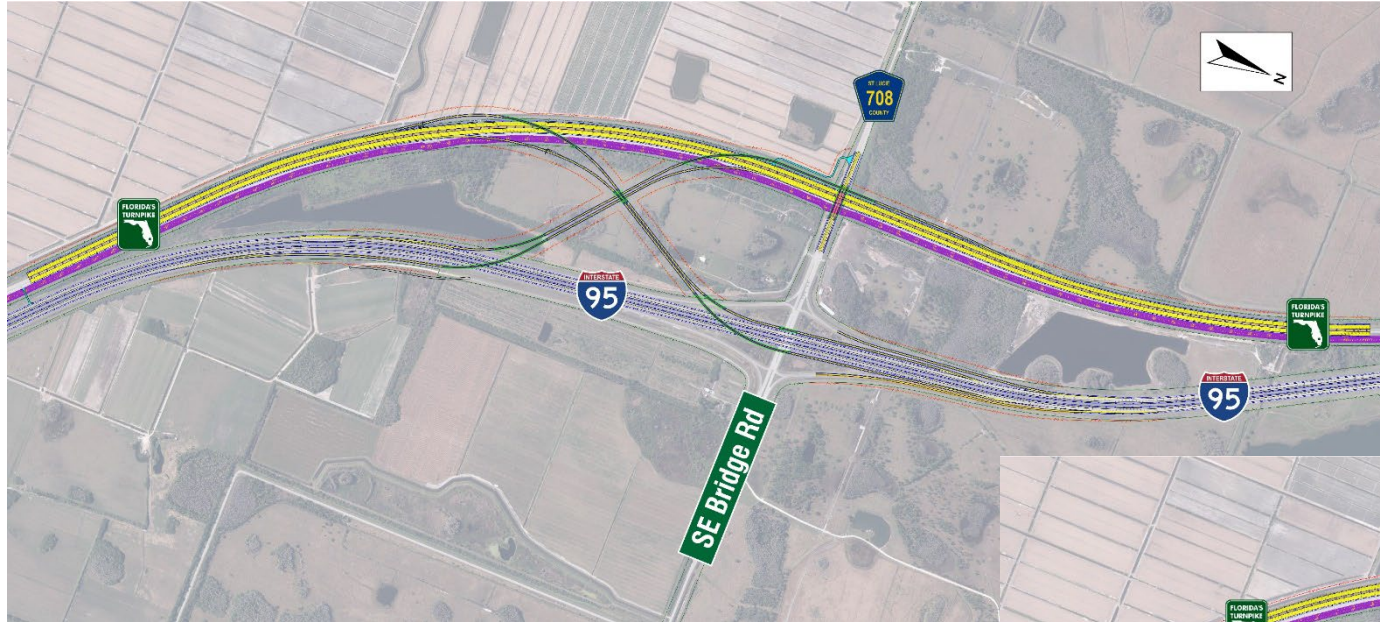


# ALTERNATIVES ANALYSES



# PROJECT ALTERNATIVES

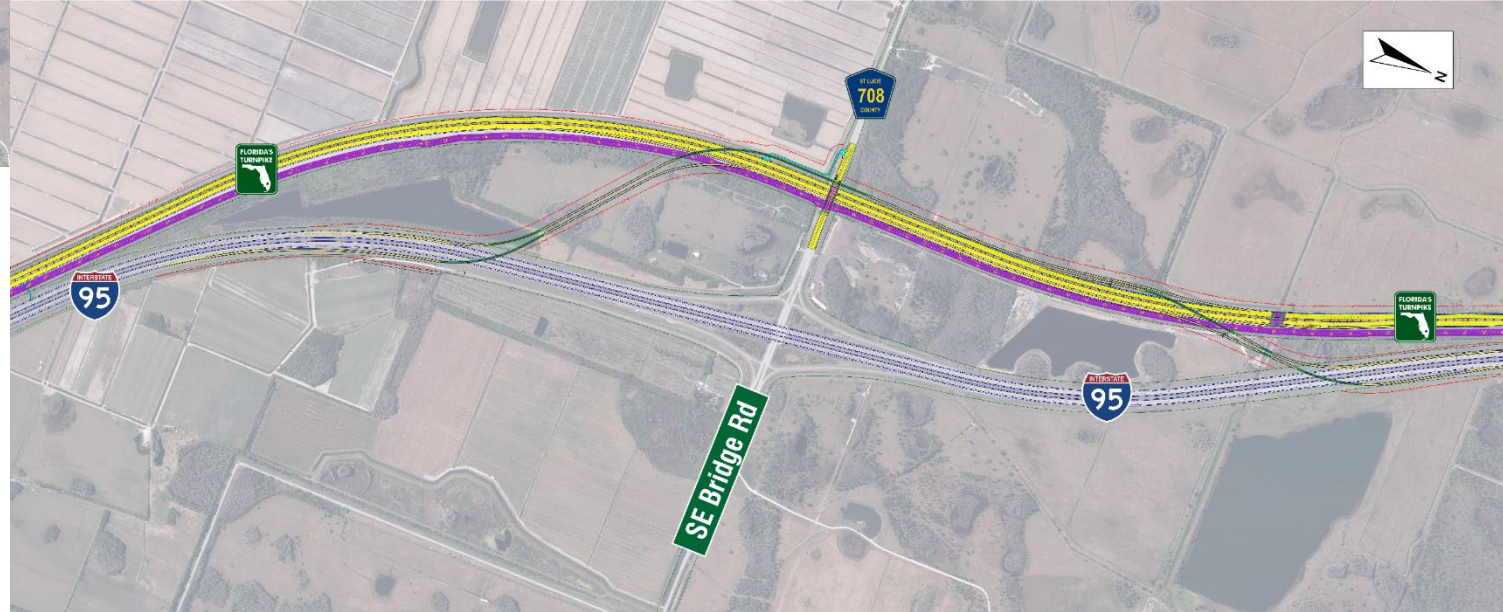
## ALTERNATIVE 1



Both alternatives provide the same:

- ✓ Four direct connections between Florida's Turnpike and I-95
- ✓ Emergency access roads for emergency vehicles only

## ALTERNATIVE 2



# 2050 TRAFFIC BENEFITS

## 2050 Traffic Conditions

### New Direct Connection Interchange

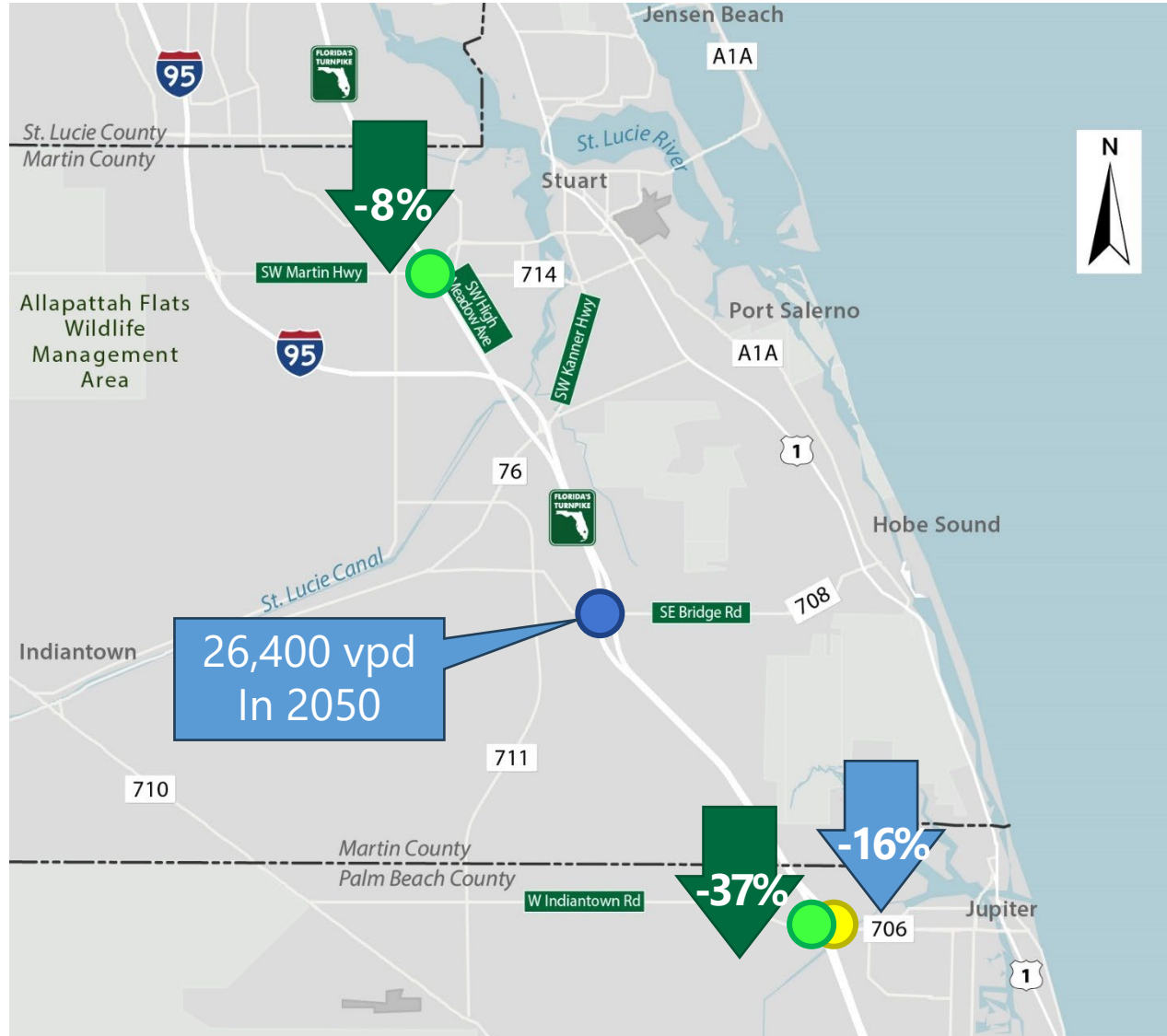
- 26,400 vehicles per day in 2050

### West Indiantown Road Interchange

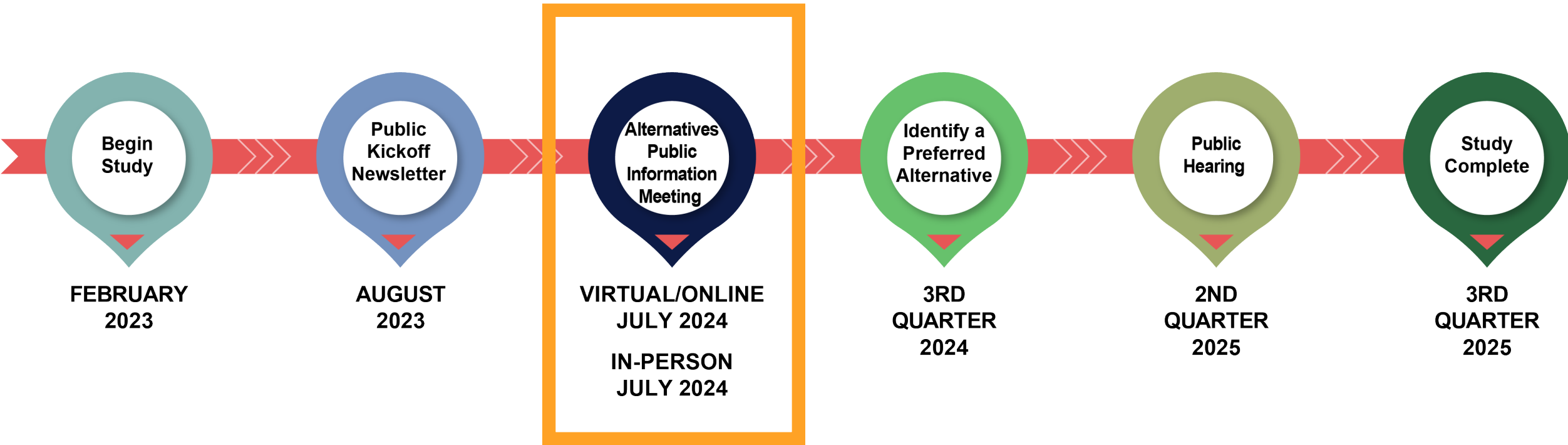
- Crossover traffic removed: 15,600 AADT
- 37% decrease at Turnpike interchange
- 16% decrease at I-95 interchange

### Southwest Martin Highway Interchange

- Cross over traffic removed: 3,200 AADT
- 8% decrease at Turnpike interchange



# PROJECT SCHEDULE



*Schedule is subject to change*

## Project Website:

[www.TPK-I-95-Interchange-Study.com](http://www.TPK-I-95-Interchange-Study.com)

## Project Manager Contact Information:

Jazlyn Heywood, P.E.  
Florida's Turnpike Enterprise  
P.O. Box 613069  
Ocoee, FL 34761-3069  
[Jazlyn.Heywood@dot.state.fl.us](mailto:Jazlyn.Heywood@dot.state.fl.us)  
407.264.3298

# THANK YOU!