



2020 Urban Boundary and Functional Classification

July 10, 2024





Functional Classification

Overview

- Functional Classification (Funclass) is a method to describe the usage of roadways within the immediate area, regionally for some roadways and statewide for others.
- Federal Highway Administration requires roadways to be functionally classified as part of the mechanism to fund roadway improvements and perform analysis of the network of roadways.



July 1, 2024





Functional Classification

Overview

- Federal-aid Eligibility is determined by Functional Classification which includes roadways higher than Local or Rural Minor Collector.
- Surface Transportation Block Grant (STBG) funds are used on Federal-aid roadways.
- Federal Highway-Emergency Relief (FHWA-ER) are used after a disaster declaration (e.g., hurricane, floods, tornados,...)



July 1, 2024





Functional Classification

Roles

- FDOT performs initial review and determination of Funclass.
- City and County agencies review Funclass within and adjacent to their boundaries providing concurrence or recommendations for Funclass of roadways.
- MPO/TPO/TPA approve the Funclass by signing the official maps.
- FDOT & FHWA approve the Funclass by signing the official maps.



July 1, 2024





Functional Classification

Information used to analyze Functional Class

- Intersection, types and quantities
- Existing traffic counts
- Traffic Generators
 - Malls
 - Hospitals
 - Public Facilities
- Comparative look at the surrounding roadways and traffic patterns

Data Source: FDOT FCUAB Handbook

April 16, 2024

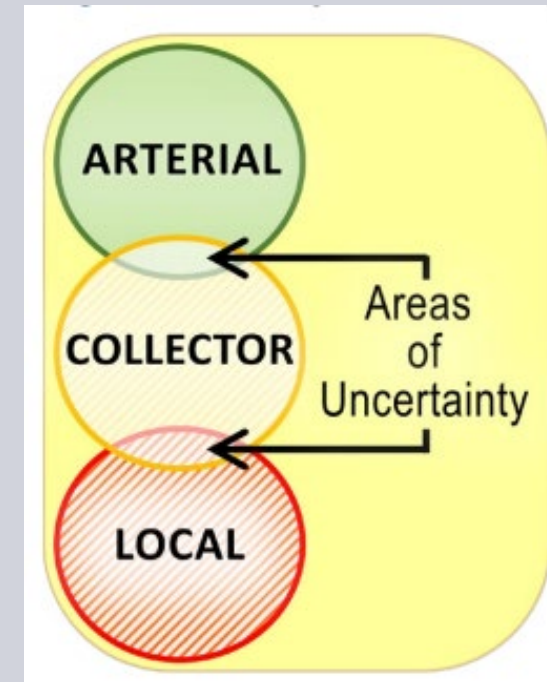




Functional Classification

Functional Classification Overlap

- There is variability between the different roadway classifications.
- Functional Classification is situational in respect to its location in the roadway network.
- Clearly, Interstates and Cul-de-Sacs are the opposite end of the spectrum; however, there is some variations between the established Functional Classifications.



Source: FHWA Highway Functional Classification 2023 Edition

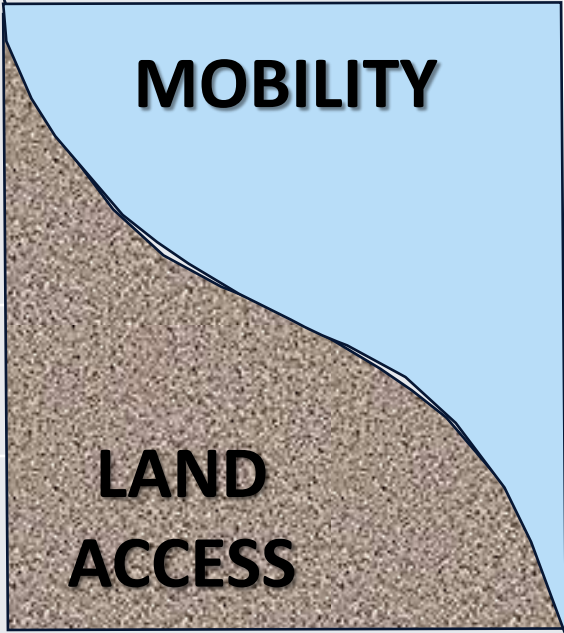
April 16, 2024





Functional Classification

Correlation of Mobility, Land Access, and Functional Classification

Proportion of Services	Functional Classification	Generally
	Principal Arterials	Primarily, freeways and interstates, help move people and goods longer distances and connect to other communities.
	Minor Arterials Collectors	These facilities movement within the vicinity.
	Locals	Local roads are lower in mobility and have direct access to properties.

Source: FHWA Functional Classification Guidelines – Early Edition

July 1, 2024





Functional Classification

Roadway Attribute Generalities – Information used to analyze Functional Class

Functional Class	Access Points	Speed Limit	AADT	Lanes	Length
Principal Art	Few	Highest	Highest	Most	Longest
Minor Art	Few	High	High	Medium	Medium
Major Collector	Medium	Medium	Medium	Medium	Medium
Minor Collector	Medium	Low	Low	Low	Short
Local	Many	Lowest	Lowest	Few	Shortest

Data Source: FDOT FCUAB Handbook

April 16, 2024





Functional Classification

The Functional Classification Process

1. Align Functional Classification with 2024 Smoothed Urban Area Boundaries
2. Determine Changes to Functional Classification based on Roadway Purpose
3. Review "Local Roads" and determine additions to Federal-aid System – Surface Transportation Block Grant (STBG)

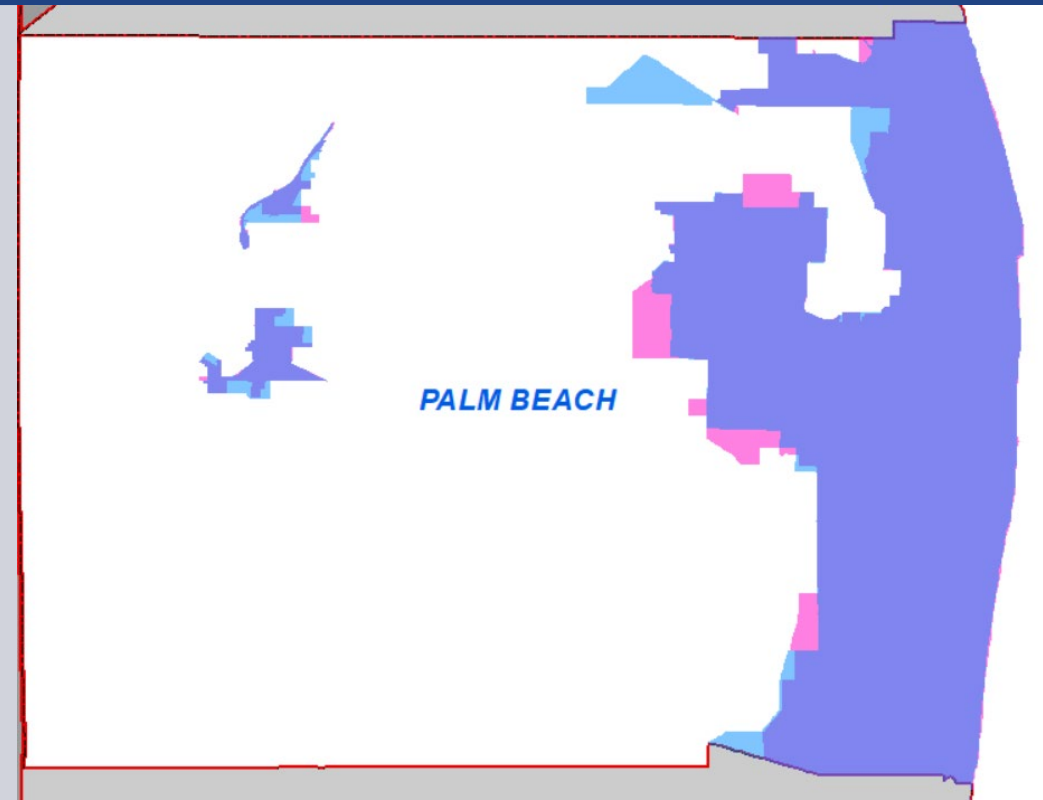




Functional Classification

1. Align Functional Class with UAB Designation

2020 Smoothed
VS.
2010 Smoothed
Urban Area
Boundaries



July 1, 2024





Functional Classification

Result of Aligning Functional Classification with UAB

County	FUNCTIONAL CLASS: 2014 vs. 2024														Net Change (Miles)
	Interstate		Expressway		Principal Arterial/Other		Minor Arterial		Major Collector		Minor Collector		Local		
	Rural to Urban	Urban to Rural	Rural to Urban	Urban to Rural	Rural to Urban	Urban to Rural	Rural to Urban	Urban to Rural	Rural to Urban	Urban to Rural	Rural to Urban	Urban to Rural	Rural to Urban	Urban to Rural	
Broward	0.562				0.472									0.273	1.307
Indian River	1.252				0.254	0.033	1.038	2.456	1.068	1.937				2.923	10.961
Martin					2.279	3.339	3.351	7.187				3.139		0.711	20.006
Palm Beach	0.145		0.170		2.577	4.653	0.501	.016		1.545	0.598	2.012	0.283		12.500
St. Lucie		0.040	0.012		0.017	0.564		0.526		0.539					1.698
Total	1.959	0.040	0.182		5.599	8.589	4.890	10.185	1.068	4.021	0.598	5.151	0.556	3.634	46.472

Data Source: RCI

July 1, 2024





Functional Classification

Result of Aligning Functional Classification with UAB

FUNCTIONAL CLASS: 2014 vs. 2024			
COUNTY	Rural to Urban	Urban to Rural	Net Change (Miles)
Broward	1.307		1.307
Indian River	612	7.349	10.961
Martin	5.630	14.376	20.006
Palm Beach	4.274	8.226	12.500
St. Lucie	0.029	1.669	1.698
Total	14.852	31.620	46.472

Data Source: RCI

June 19, 2024





Functional Classification

Resulting Federal Aid Eligibility Due to Aligning Functional Classification with UAB

FUNCTIONAL CLASS: 2014 vs. 2024				
COUNTY	Added to Fed. Aid Eligibility (Rural to Urban Minor Coll.)	Removed from Fed. Aid Eligibility (Urban to Rural Minor Coll.)	No Changes to Fed. Aid Eligibility	Net Change (Miles)
Broward			1.307	1.307
Indian River			10.961	10.961
Martin		3.139	16.867	20.006
Palm Beach	0.598	2.012	9.890	12.500
St. Lucie			1.698	1.698
Total	0.598	5.151	40.723	46.472

Data Source: RCI

June 19, 2024

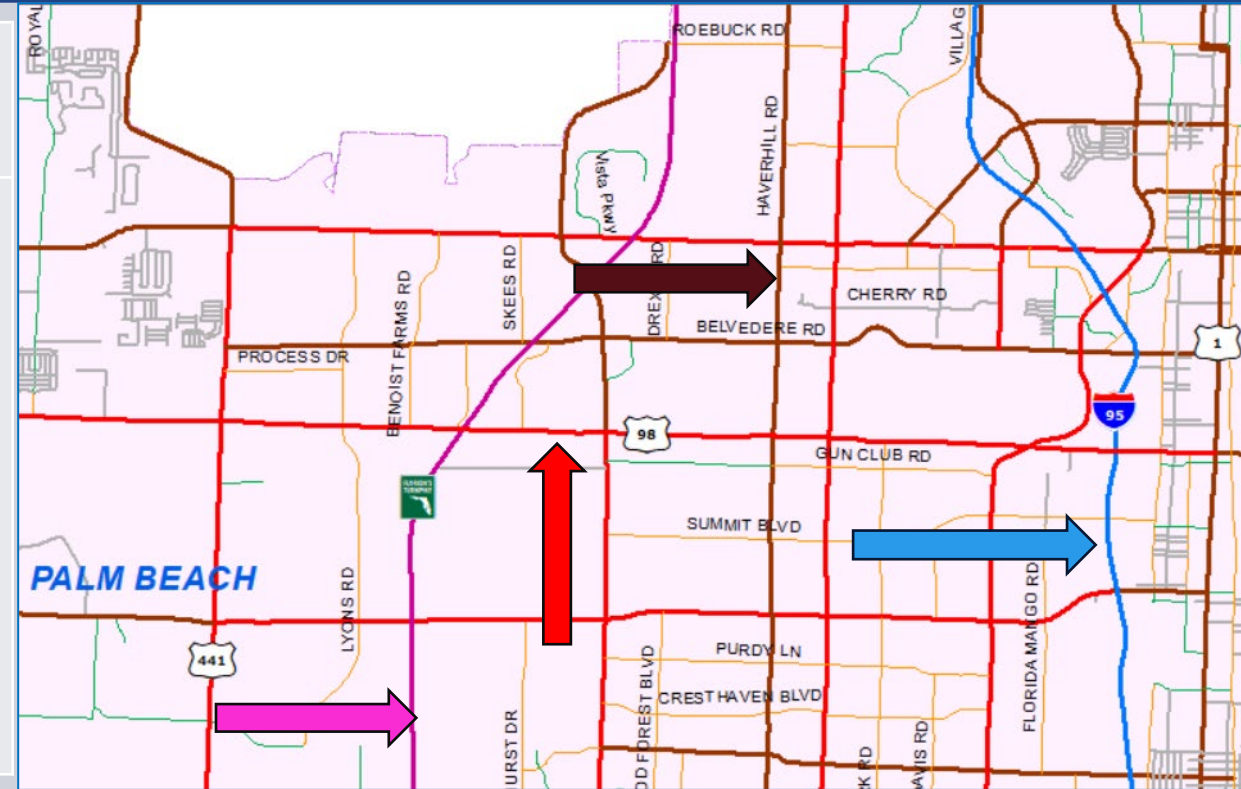




Functional Classification – Major Roadways

2. Roadway Purposes that Influence the Functional Class

Functional Class	Required # of Roadway Purposes	Roadway Purpose
Principal Arterial (Blue, Red, Pink)	2+	<ol style="list-style-type: none"> Travel to and through UAB Travel to and through small UA National defense Interstate and regional commerce
Minor Arterial (Brown)	1	<ol style="list-style-type: none"> Access to airports, seaports, and major rail terminals, or intermodal transfer facilities Access to major public facilities Access to minor public facilities



Data Source: FDOT FCUAB Handbook

July 1, 2024

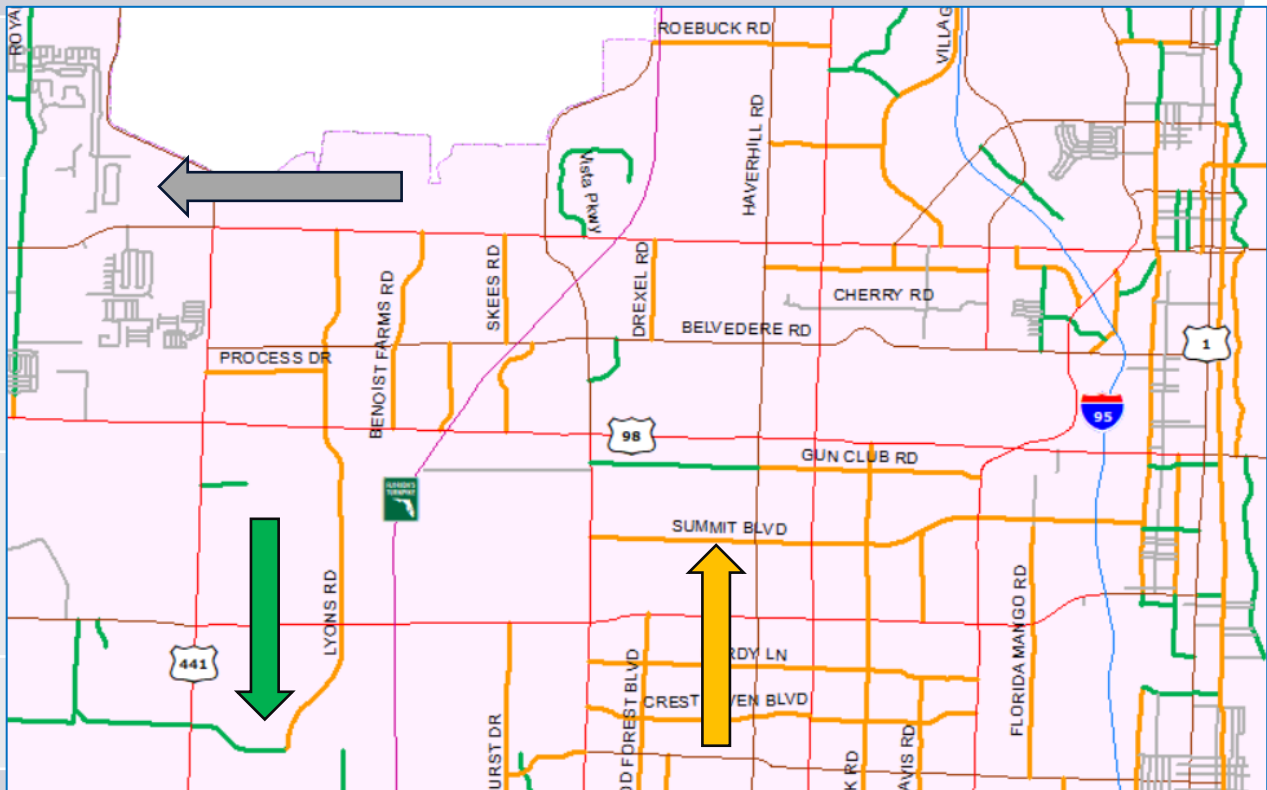




Functional Classification – Minor Roadways

2. Roadway Purposes that Influence the Functional Class

Functional Class	Required # of Roadway Purposes	Roadway Purpose
Major Collector (Orange)	1+	<ol style="list-style-type: none"> Interconnect of major thoroughfares Interconnect of minor thoroughfares Access to concentrated property use areas
Minor Collector (Green)	1	<ol style="list-style-type: none"> Access to rural diffused property & lower density Urban residential and commercial/ industrial areas.
Local (Gray)	1	<ol style="list-style-type: none"> Local roads



Data Source: FDOT FCUAB Handbook

July 1, 2024





Functional Classification Status

Resulting Functional Classification due to evaluating roadway purposes

Palm Beach County 2014 (changed from)	2024 Functional Classification (changed to)						Grand Total
	Rural Principal Art-Other	Urban Principal Arterial-Other	Urban Minor Arterial	Urban Major Collector	Urban Minor Collector	Urban Local	
Rural Minor Arterial	↓ 10.451	0.168					10.619
Urban Principal Arterial-Other	→		0.018				0.018
Urban Minor Arterial	0.487	7.215		0.802		0.699	9.203
Urban Major Collector		0.235	6.757		1.534		8.526
Urban Minor Collector				12.972			12.972
Urban Local		0.579		0.216	3.553		4.348
Grand Total	10.938	8.197	6.775	13.990	5.087	0.699	45.686

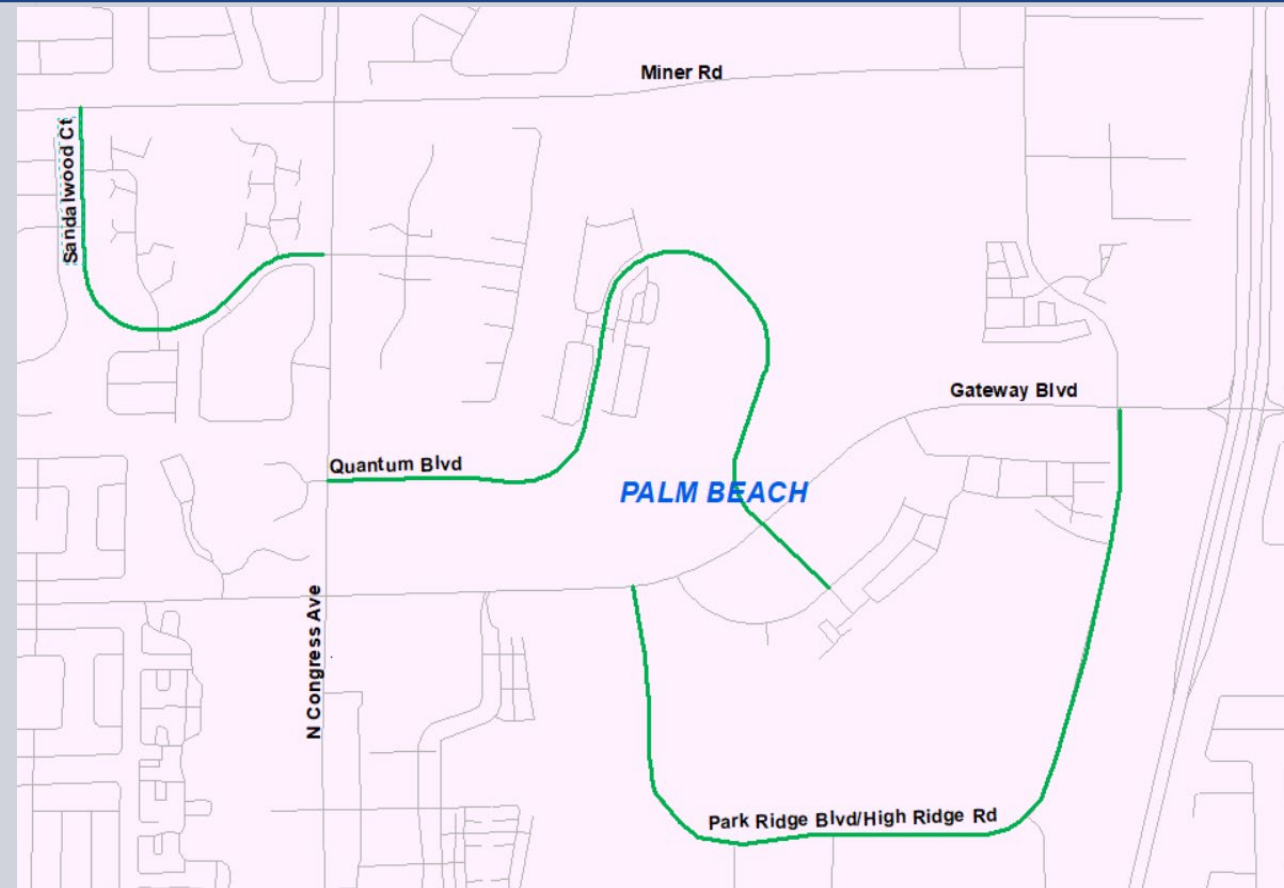
Data Source: RCI June 19, 2024





3. Review Local Roadways & Determine Additions

These additions are typically Minor Collectors that provide access primarily to neighborhoods with little to no driveway connections.





Functional Classification Status

Progress on Additional Mileage by Functional Classification and County

✓ Reviewed “Local Roads” and determined additions

Functional Class	Counties					Grand Total
	Broward	Indian River	Martin	Palm Beach	St. Lucie	
Urban Minor Arterial		0.666				3.167
Urban Major Collector	2.147	0.256				2.403
Urban Minor Collector	26.52	14.57	4.788	87.342	13.645	146.865
Grand Total	28.667	15.492	4.788	87.342	16.717	149.934

Data Source: US Census Bureau Tiger Lines

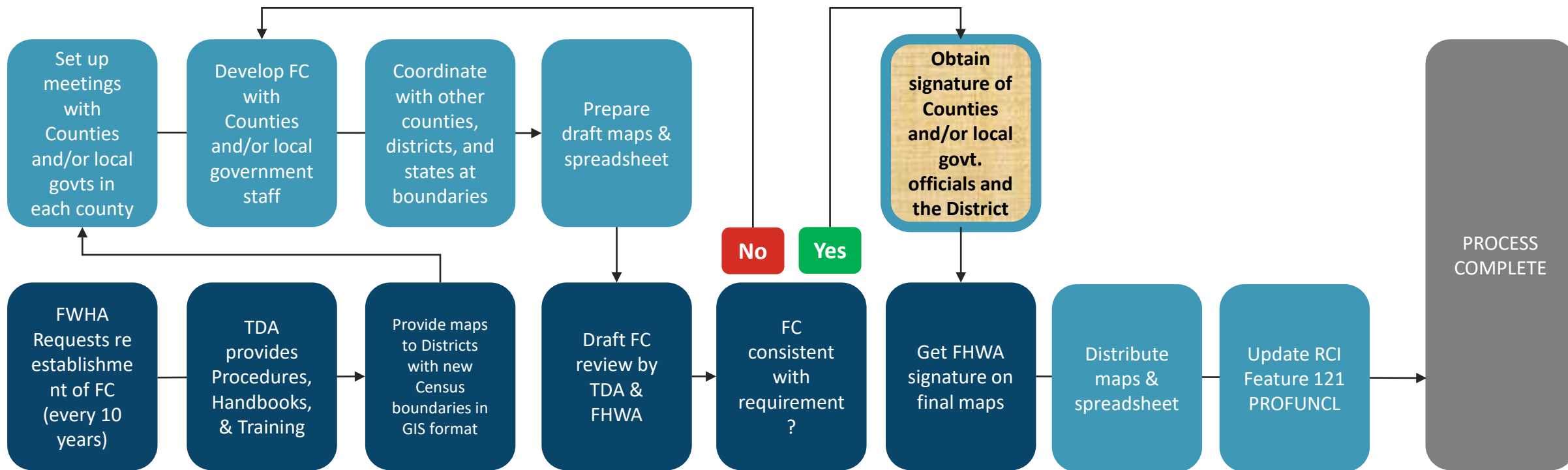
July 1, 2024



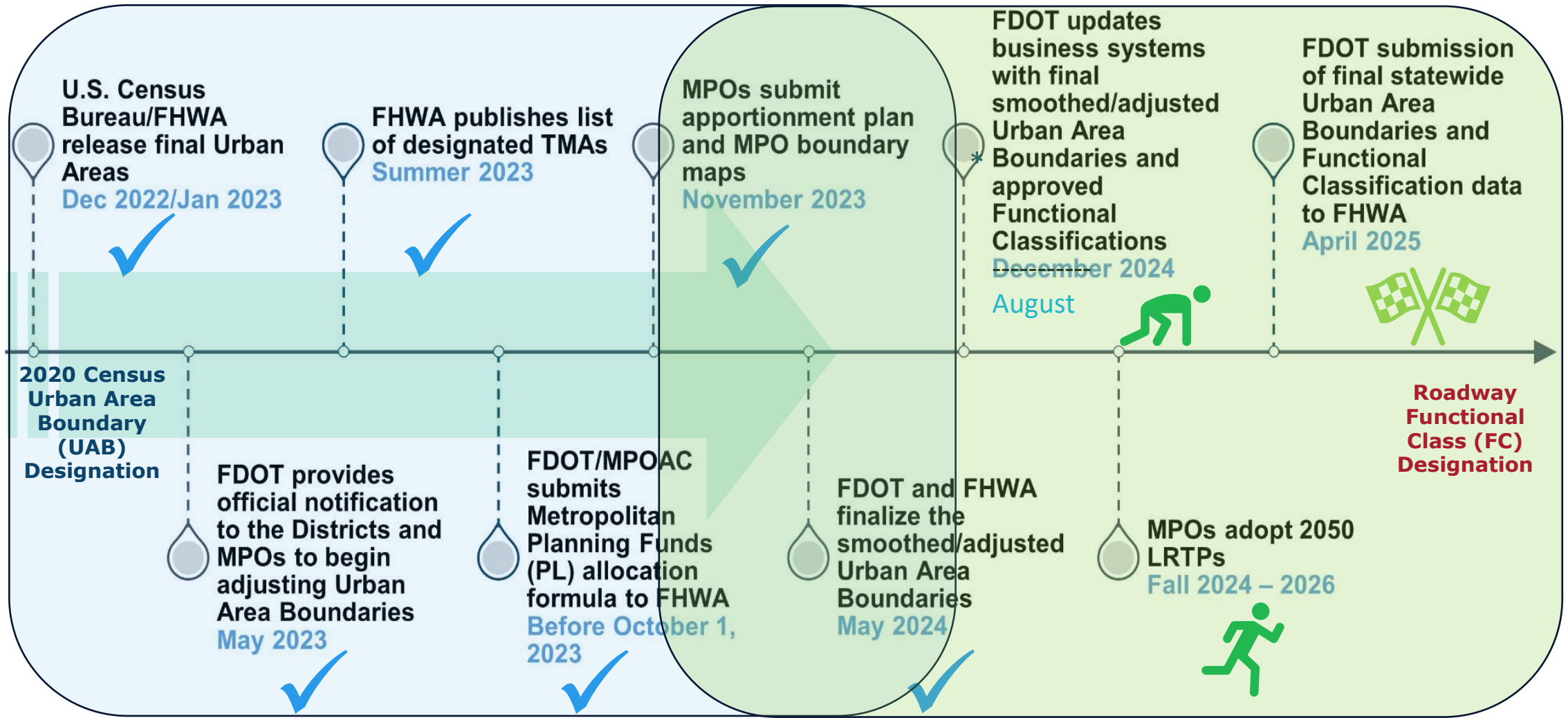


Functional Classification Process Flow Chart

-  TDA
-  The District



Timeline



* FHWA will consider all urban area boundaries final as of April 15, 2025 and will use the original 2020 Census boundaries for all urban areas that have not been adjusted.





Functional Classification

Pending Activities

- Coordination with Districts 1, 5 and 6 for crossover roadways
 - Obtain agreement on FC continuity between districts
- Coordination with Counties and Municipalities
 - Obtain Comments for adjustments or acceptance as presented
 - Schedule meetings to discuss comments
 - Implement appropriate adjustments and obtain acceptance





Functional Classification

Pending Activities

- Prepare & submit maps to TDA/FHWA for Pre-Approval
 - Adjust as appropriate
- Submit maps to TPA for Signatures
- Submit maps to TDA/FHWA for Signatures
- Update Roadway Characteristics Inventory (RCI) System





Questions?

