



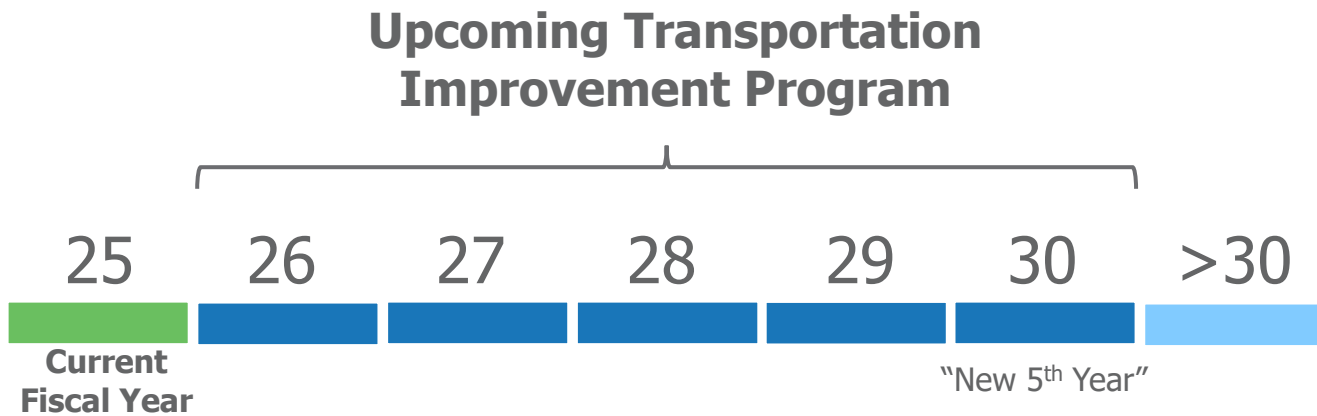
List of Priority Projects

Fiscal Year (FY) 2026-2030

TPA Committees July 2024

What is the List of Priority Projects?

Priorities to fund with federal and state funding over the next 5 years



PALM BEACH
Transportation
Planning Agency

**LIST OF
PRIORITY
PROJECTS**

FY 2026-2030

Scheduled for Adoption on July
18, 2024

PalmBeachTPA.org/priorities

TIP Development Process





TIP Project Sections

*Approved
TPA Priority List*



TPA PRIORITY PROJECTS
Major Projects/ State Roads
Local Initiatives Program
Transportation Alternatives Program
SUN Trail

FDOT PRIORITIES AND OTHER PROJECTS
Strategic Intermodal System (SIS) Capacity
Other FDOT & Local Projects
Airports, Railroads and Seaport

OPERATIONS AND MAINTENANCE
Major Maintenance
O&M Roadways
O&M Transit

TPA Funding Programs

Major Projects / State Road Modifications

Long Range Transportation Plan Cost Feasible List

Primarily State Funds

(District Dedicated Revenue-DDR, Statewide Fuel Tax-DS, Public Transit Office-DPTO)

Local Initiatives (LI)

TPA call for projects on Federally Aid System

Primarily Federal Funds

(Surface Transportation Funds – SU, some FDOT Surface Transportation Funds – SA)

Transportation Alternatives (TA)

TPA call for projects on/ off Federally Aid System

Primarily Federal Funds

(TPA Transportation Alternatives - TALU, FDOT Transportation Alternatives - TALT)



Major Projects

Tri-Rail Extension on FEC Corridor (14-1)

Extends commuter service north into Jupiter.

FDOT preliminary planning studies for Broward and Palm Beach underway soon.

Operations and Maintenance still required (local commitment).

Request to ensure close coordination with TPA.





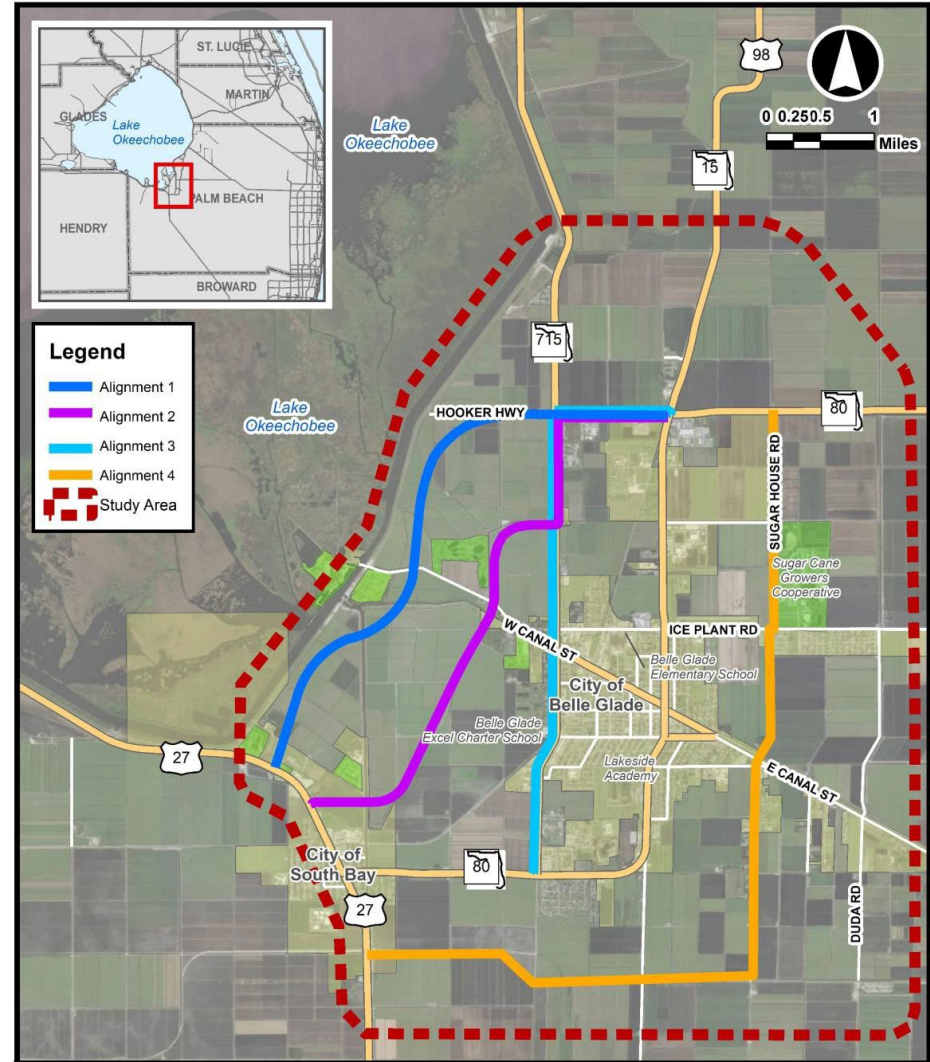
Major Projects

US-27 Connector from US-27 to SR-715 (18-3)

Provides a potential truck bypass around City of Belle Glade and South Bay.

FDOT finishing initial feasibility study.

Request to fund the Project Development & Environment (PD&E) Phase.



Major Projects

Indiantown Rd at Central Blvd (21-6)

Request to accelerate PD&E phase before FY 28. Might have potential to start in FY 27.

PD&E would evaluate feasibility of a Partial Displaced Left Turn (PDLT) among other concepts to improve congestion and safety conditions.





Transportation Alternatives (TA)

Yr/Rank	Project	Funds Needed
24-1	Palm St from Lake Ave to US-1/Dixie Hwy bike lanes	\$1.50 M
24-2	NW 2nd Ave from Jeffrey St to Hidden Valley Blvd two-way bicycle path	\$1.50 M
24-3	Camino Real from Dixie Hwy to Federal Hwy raised bicycle lanes	\$873 k
24-4	<u>Palm Beach Lakes Blvd from Executive Center Dr to Australian Ave transit access</u>	<u>\$789 k</u>

Total Requested: **\$5.09 M**

A decorative graphic on the left side of the slide, consisting of several white, overlapping geometric shapes that resemble stylized arrows or chevrons pointing to the right. The shapes are set against a solid blue background.

Motion to Recommend Adoption FY 26-30 List of Priority Projects