



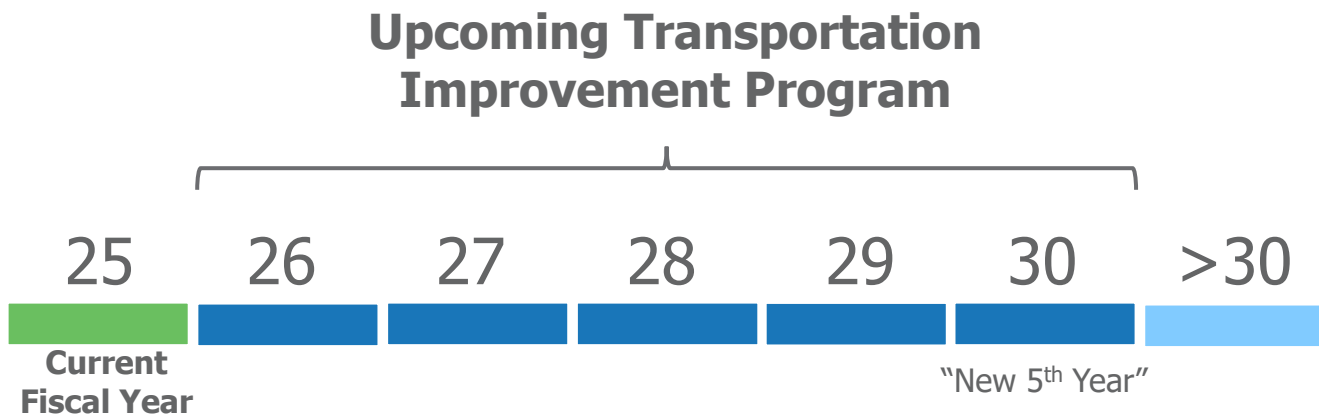
# List of Priority Projects

Fiscal Year (FY) 2026-2030

TPA Governing Board July 2024

# What is the List of Priority Projects?

Priorities to fund with federal and state funding over the next 5 years



**PALM BEACH**  
Transportation  
Planning Agency

**LIST OF  
PRIORITY  
PROJECTS**

**FY 2026-2030**

Scheduled for Adoption on July  
18, 2024

[PalmBeachTPA.org/priorities](http://PalmBeachTPA.org/priorities)

# TIP Development Process



# Programming & production schedule





# TIP Project Sections

*Approved  
TPA Priority List*



TPA PRIORITY PROJECTS
Major Projects/ State Roads
Local Initiatives Program
Transportation Alternatives Program
SUN Trail

FDOT PRIORITIES AND OTHER PROJECTS
Strategic Intermodal System (SIS) Capacity
Other FDOT & Local Projects
Airports, Railroads and Seaport

OPERATIONS AND MAINTENANCE
Major Maintenance
O&M Roadways
O&M Transit

# TPA Funding Programs

## Major Projects / State Road Modifications

Long Range Transportation Plan Cost Feasible List

### Primarily State Funds

(District Dedicated Revenue-DDR, Statewide Fuel Tax-DS, Public Transit Office-DPTO)

## Local Initiatives (LI)

TPA call for projects on Federally Aid System

### Primarily Federal Funds

(Surface Transportation Funds – SU, some FDOT Surface Transportation Funds – SA)

## Transportation Alternatives (TA)

TPA call for projects on/ off Federally Aid System

### Primarily Federal Funds

(TPA Transportation Alternatives - TALU, FDOT Transportation Alternatives - TALT)



# Major Projects

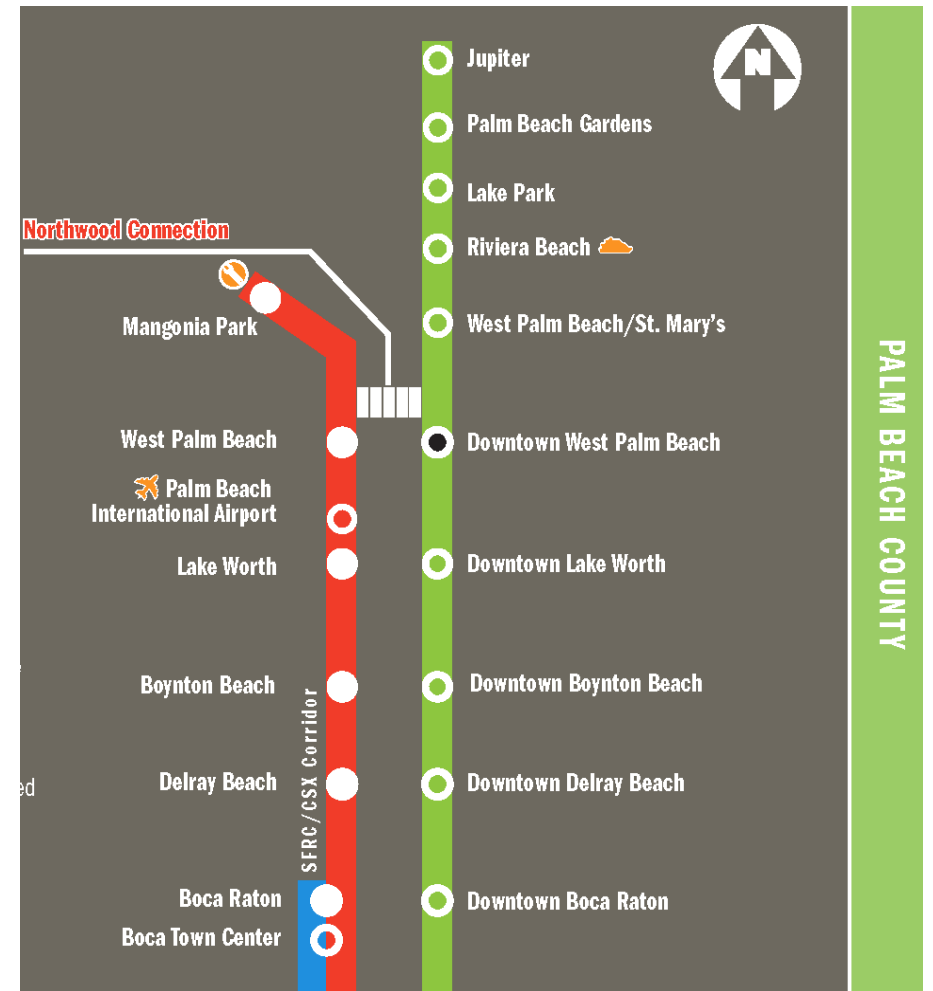
## Tri-Rail Extension on FEC Corridor (14-1)

Extends commuter service north into Jupiter.

FDOT preliminary planning studies for Broward and Palm Beach underway soon.

Operations and Maintenance still required (local commitment).

Request to ensure close coordination with TPA.





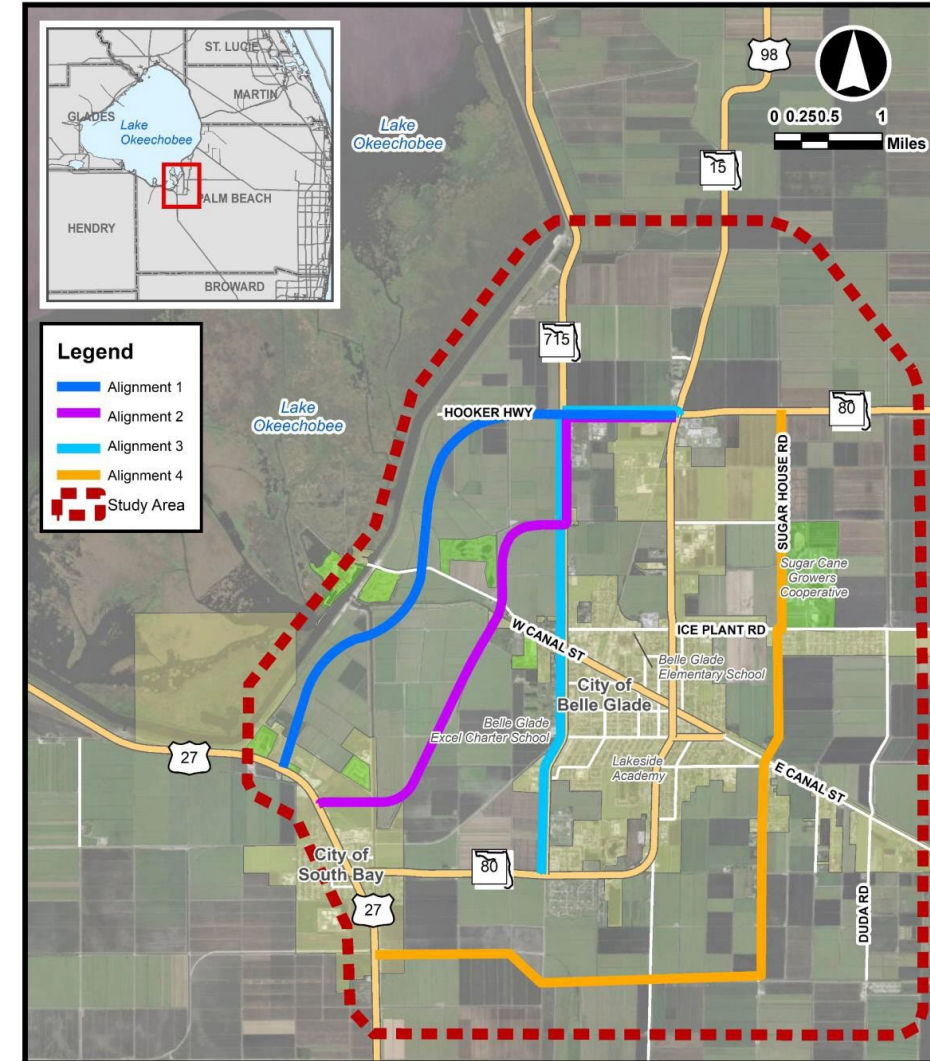
# Major Projects

## US-27 Connector from US-27 to SR-715

Provides a potential truck bypass around City of Belle Glade and South Bay.

FDOT finishing initial feasibility study (18-3).

Request to fund the Project Development & Environment (PD&E) Phase.





# Major Projects

## **Indiantown Rd at Central Blvd (21-6)**

Request to accelerate PD&E phase before FY 28. Might have potential to start in FY 27.

PD&E would evaluate feasibility of a Partial Displaced Left Turn (PDLT) among other concepts to improve congestion and safety conditions.





# Transportation Alternatives (TA)

Yr/Rank	Project	Funds Needed
24-1	Palm St from Lake Ave to US-1/Dixie Hwy bike lanes	\$1.50 M
24-2	NW 2nd Ave from Jeffrey St to Hidden Valley Blvd two-way bicycle path	\$1.50 M
24-3	Camino Real from Dixie Hwy to Federal Hwy raised bicycle lanes	\$873 k
24-4	<u>Palm Beach Lakes Blvd from Executive Center Dr to Australian Ave transit access</u>	<u>\$789 k</u>

Total Requested: **\$5.09 M**



Motion to Adopt  
FY 26-30 List of Priority Projects