



2025 Transportation Alternatives (TA) Program

Guidelines & Scoring System

TA Program Overview

- Funds on/off-road and Safe Routes to School
- Sidewalks, bicycle facilities, ped/bicycle signals, lighting, safety
- \$5.1M available, \$1.5M max per project, \$250K minimum





Proposed Program Dates

- Program Kick-Off – **Oct. 10, 2024 (TPA Governing Board Meeting)**
- Program Application Workshop – **Oct. 29, 2024**
 - Held at TPA office and recorded live.
- Pre-Application Meeting – *Required* – **Nov. 1, 2024 – Feb. 7, 2025**
- Application Deadline – **Feb. 14, 2025**
- Draft List of Priority Projects (LOPP) to Committees & Board – **July 2025**
- Final LOPP to FDOT approved by Governing Board – **July 2025**

TA Program Application Process

- All applications and supporting materials must be submitted directly to the FDOT GAP Application Portal
- More information and instructions on how to use GAP will be provided during TPA Workshop on October 22, 2024



TA Program Scoring

WHAT

PEDESTRIAN & BICYCLE FACILITIES



SHARROW

Shared lane markings used on lower-speed roadways to increase awareness that bicycles are permitted by law to use the full vehicle lane.



BICYCLE LANE

Paved surface clearly marked as a bicycle facility, adjacent to a vehicle travel lane and at least 4-ft wide.



BUFFERED BICYCLE LANE

Paved surface of at least 6-ft including two painted white lines between the bicycle and adjacent vehicle lanes.



SEPARATED BICYCLE LANE

Paved surface of at least 6-ft including a 2-ft min. physical separation between the bicycle and adjacent vehicle lanes.



RAISED BICYCLE LANE

Paved surface of at least 5-ft, clearly marked as a bicycle facility and at a higher elevation than the adjacent vehicle travel lane.



CYCLE TRACK

Paved surface clearly marked as a two-way bicycle facility at least 9-ft wide with a 3-ft min. physical separation from adjacent vehicle lanes.



SHARED USE PATH

Paved surface at least 10-ft wide that allows for two-way travel of pedestrians and bicyclists.



PATHWAY

Paved surface 8 to 9-ft wide. May or may not be aligned with parallel roadways.



SIDEWALK

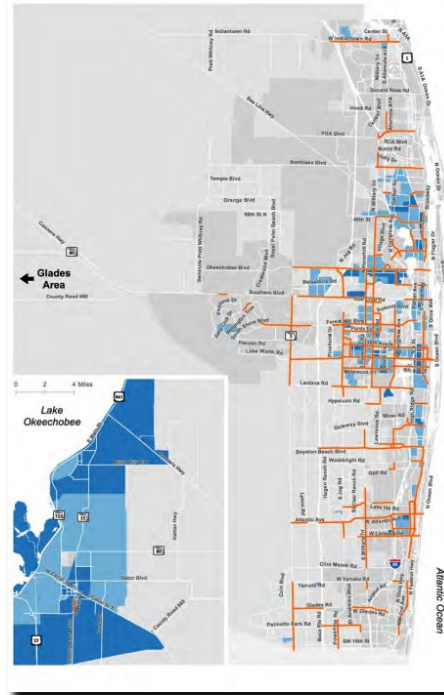
Paved pedestrian surface at least 4-ft wide on the side of a roadway. Must be ADA compliant.



UNPAVED PATHWAY

Unpaved path at least 4-ft wide with compact, firm and level ground. Must be ADA compliant.

WHERE



WHY



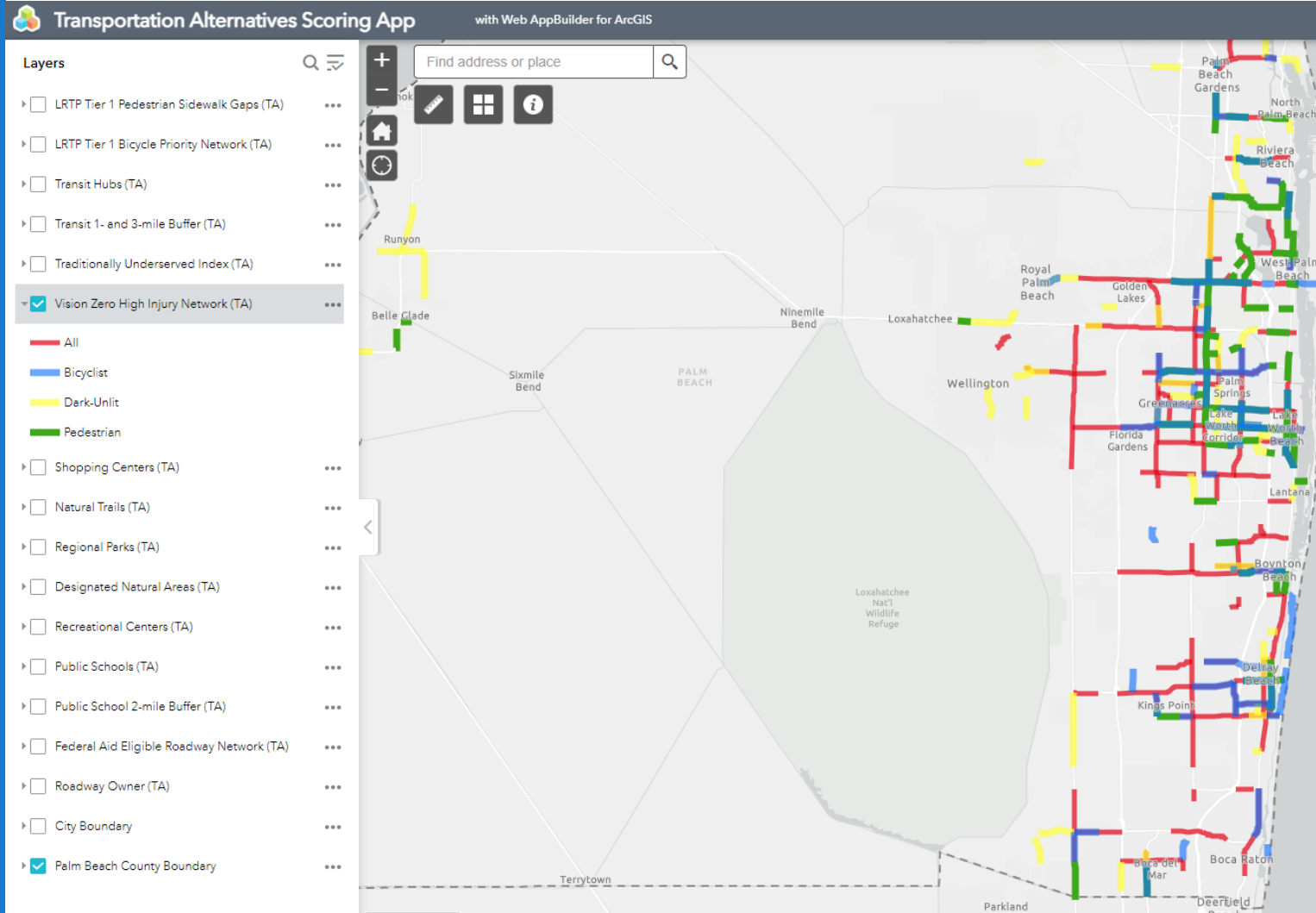
Scoring aligns with TPA's Goals, Objectives, and Performance Measures



TA Program Updates

- Updated language
- No scoring changes from 2024
- Projects not receiving all necessary public input to be flagged in LOPP

TPA Mapping Tool



PalmBeachTPA.org/TA



PALM BEACH
Transportation
Planning Agency



TRANSPORTATION ALTERNATIVES

Total Funds: ~\$5.1M/Year

Funding Range: \$250K-\$1.5M


Eligible On and Off Roads

Project Examples:

- Pedestrian & Bicycle Facilities
- Safe Routes to School
- Safety-Related Infrastructure

TA Funding Workshop
October 29, 2024 at 9 a.m. (virtual and at TPA Offices)

PalmBeachTPA.org/TA



MOTION TO RECOMMEND
APPROVAL
of the FY 24 Transportation
Alternatives Guidelines and
Scoring System