



# Performance Measures – Safety Targets

February 2024 | TPA Committees

# Why Performance Measures?

## 2045 Long Range Transportation Plan



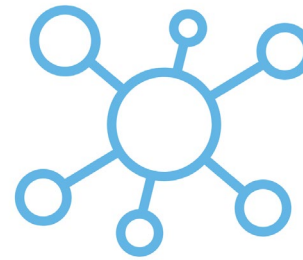
Goal 1. Preserve



Goal 2. Safe



Goal 3. Efficient



Goal 4. Connected



Goal 5. Multimodal

[PalmBeachTPA.org/PM](http://PalmBeachTPA.org/PM)



# Safety Measures

**Number of Fatalities**

**Rate of Fatalities**  
per 100 million vehicle miles traveled (VMT)

**Number of Serious Injuries**

**Rate of Serious Injuries**  
per 100 million vehicle miles traveled (VMT)

**Number of Non-Motorized  
Fatalities & Serious Injuries**

# Previous Targets

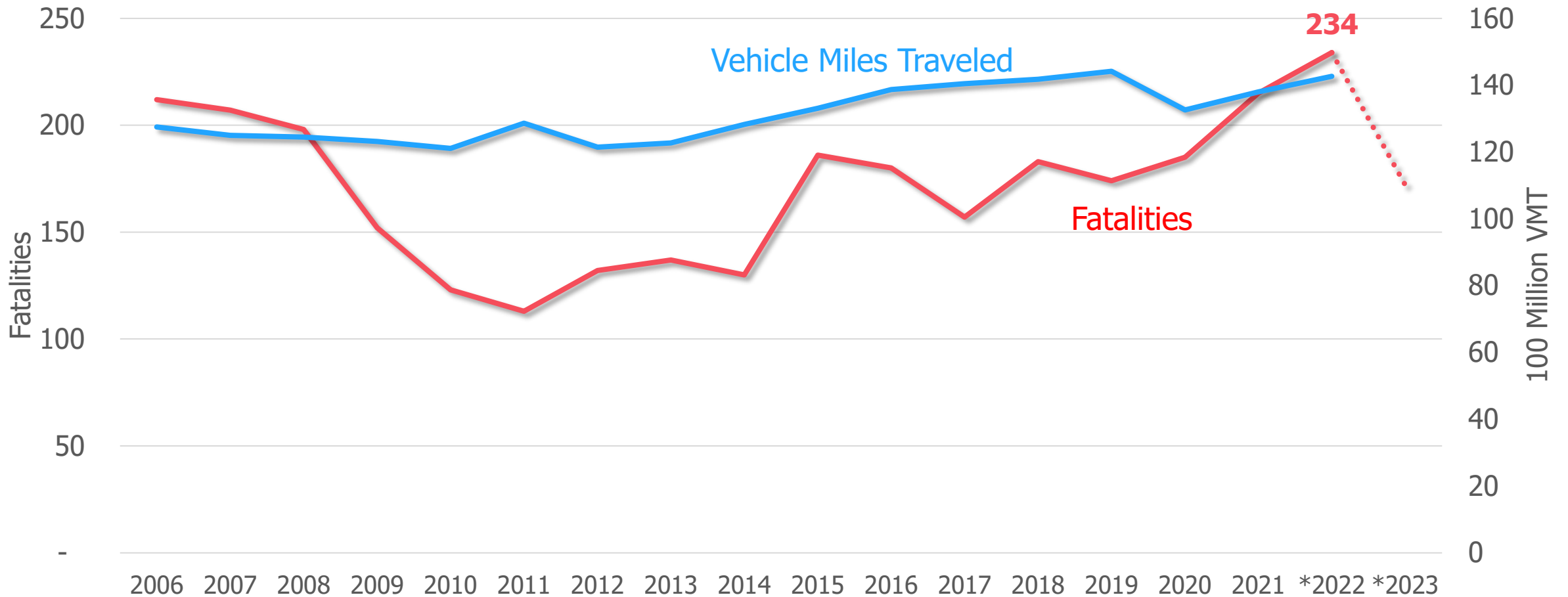
- TPA adopted ZERO: 2018 – 2023
- TPA Vision Zero Action Plan
- FDOT Statewide Target is ZERO
- USDOT long term Target is ZERO



# Safety Performance

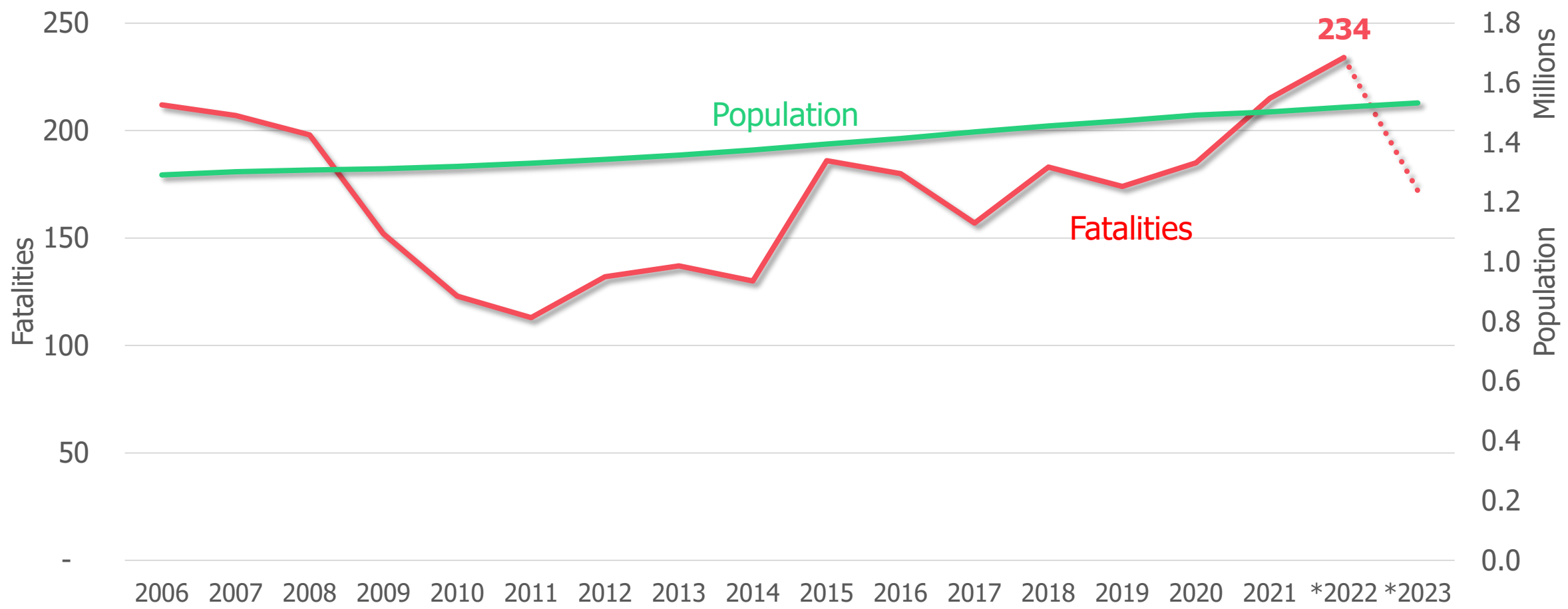
Performance Measures	2013 - 2017 Average	2018 - 2022 Average	Trend	2024 Proposed Targets
Fatalities	158	198	↑	0
Fatality rate per 100 million VMT	1.19	1.40	↑	0
Serious injuries	1,080	967	↓	0
Serious injury rate per 100 million VMT	8.16	6.80	↓	0
Pedestrians & bicyclists fatalities & serious injuries involving a motor vehicle	205	204	→	0

# Fatalities and Vehicle Miles Traveled





# Fatalities per capita



An abstract graphic on the left side of the slide, consisting of several white, overlapping geometric shapes that resemble stylized, layered lines or a modern logo. The shapes are set against a solid blue background.

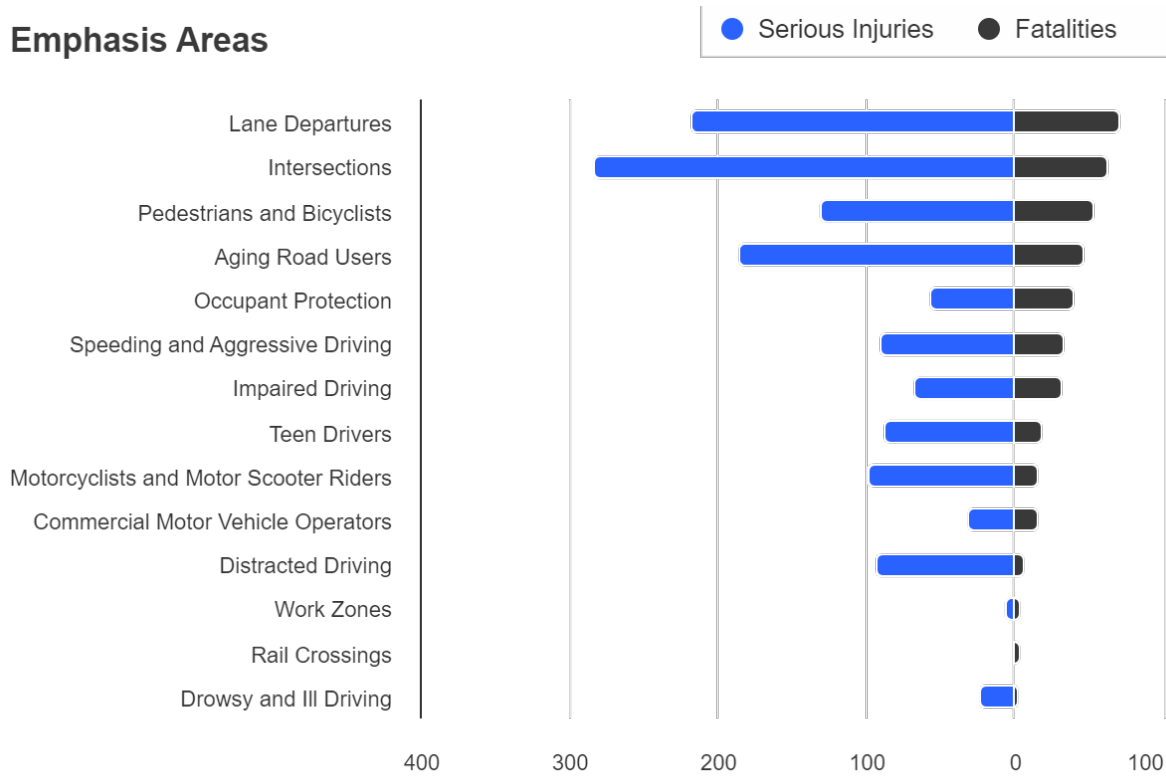
Why?



# Emphasis Areas (2023) – Signal4

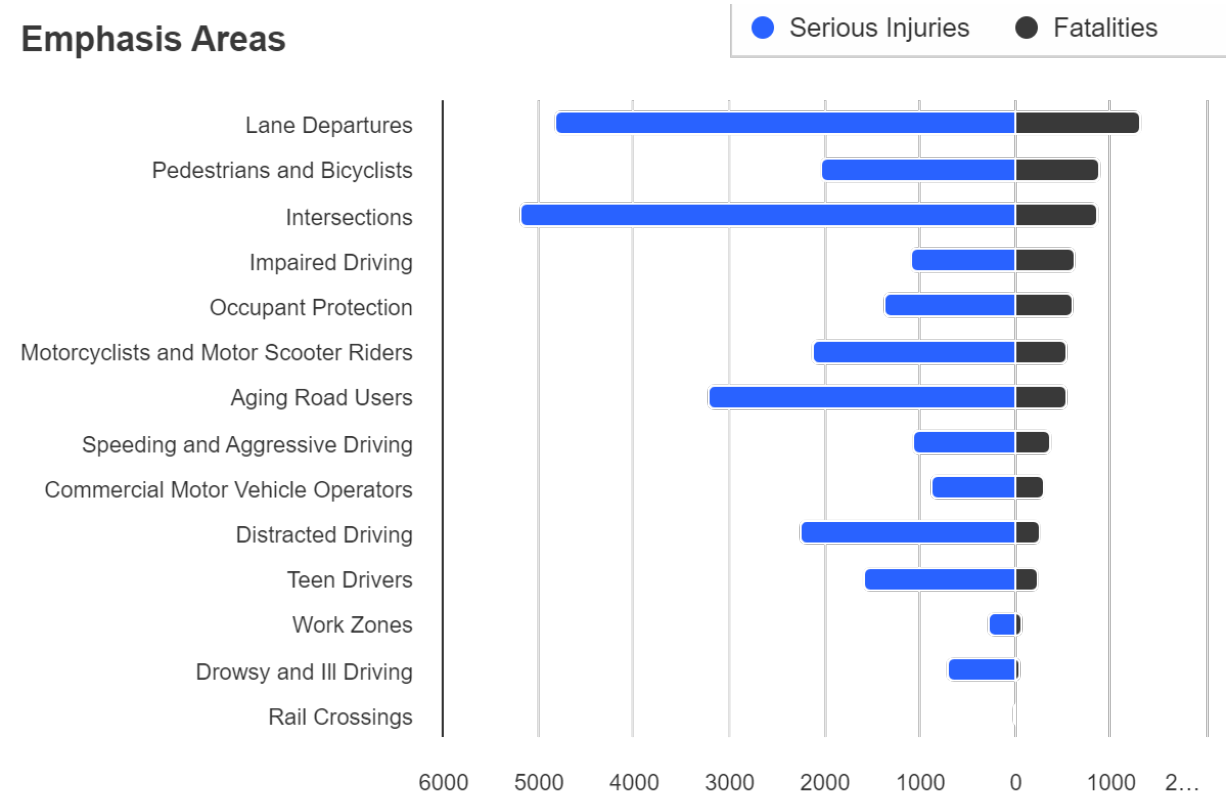
## Palm Beach County

### Emphasis Areas



## Statewide

### Emphasis Areas





What are we doing  
about it?

# Action Plans



**National Roadway  
Safety Strategy**



**Highway Safety  
Improvement Program**



**PALM BEACH  
Transportation  
Planning Agency**



**Vision Zero & Safety Action Plans  
+  
Vision Zero**

# TPA Safety Efforts

## Complete Streets

- Promotion of policies, design guidance, and implementation
- 6 Municipalities

## Vision Zero

- Promotion of policies and implementation
- 13 Municipalities
- TA Program, SS4A, Local Road Safety Program, etc.

## Grant Support

## Safety Events & Programs

- ~40 Events Annually
- Roadway Safety Audits
- Ped/Bike Counter Program
- FDOT Ped/Bike Safety Coalition



## PEDESTRIAN & BICYCLE QUARTERLY CRASH REPORT



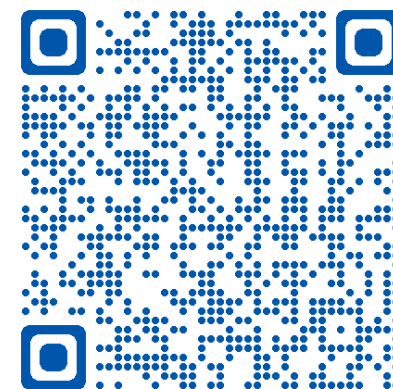
QUARTER

# Vision Zero Action Plan Overview



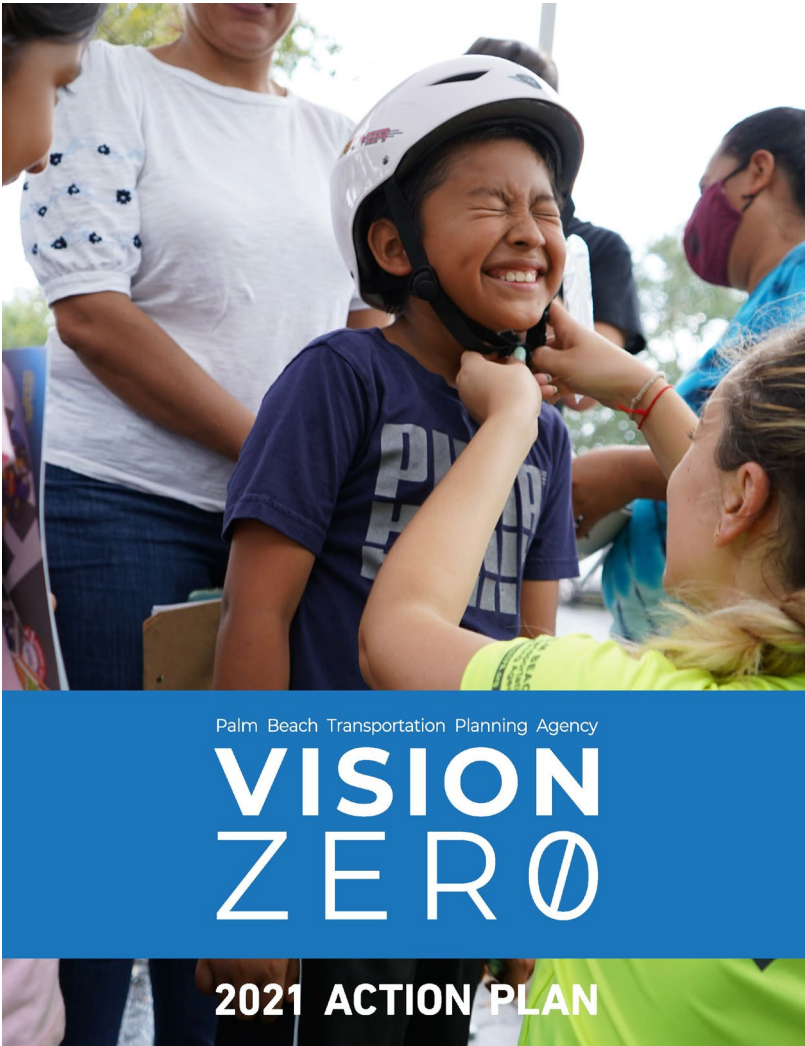
- Adopted April 18, 2019
- Updated October 16, 2021
- Eliminate fatal and serious injuries
- Policy, Funding, and Culture Actions

Read the plan >>





# Vision Zero Action Plan – Progress Update



- ✔ Policy Action 1.2
  - HB 317/SB 258 – Passed Law
- Policy Action 1.3
  - Speed Management Plan scope of work underway
- Funding Action 2.1
  - Worked with FDOT and PBC to apply LPI's at the following locations:
    - Atlantic Avenue and Homewood Blvd
    - Southern Blvd and Parker Ave





# 2023-2024

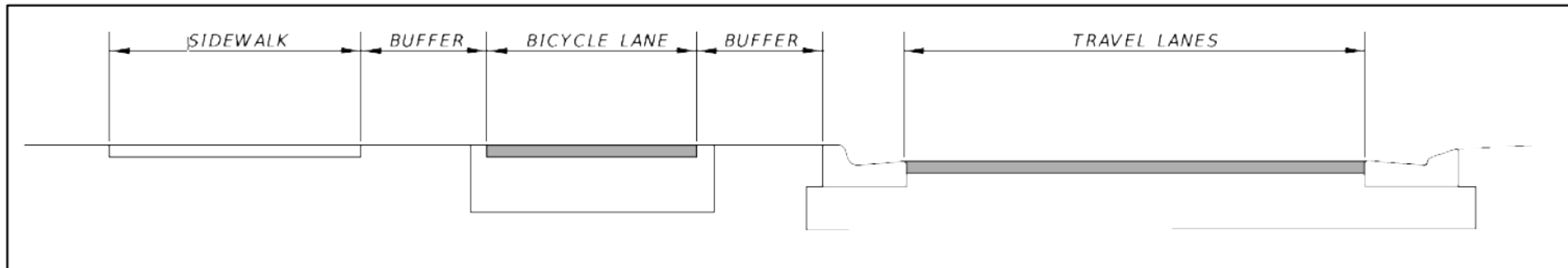




# Major Updates

- Manual on the Uniform Traffic Control Devices
  - Context guidance for speed setting of non-freeway/rural settings (85<sup>th</sup> percentile)
  - Separated bicycle lanes and protected intersections
  - Colored pavement markings + two-stage bicycle turn boxes
- FDM Published January 1, 2024 with new criteria/facility standards

**Figure 223.2.2 Example of Sidewalk Level Bicycle Lane**





# Safety Performance

Performance Measures	2013 - 2017 Average	2018 - 2022 Average	Trend	2024 Proposed Targets
Fatalities	158	198	↑	0
Fatality rate per 100 million VMT	1.19	1.40	↑	0
Serious injuries	1,080	967	↓	0
Serious injury rate per 100 million VMT	8.16	6.80	↓	0
Pedestrians & bicyclists fatalities & serious injuries involving a motor vehicle	205	204	→	0

A decorative graphic on the left side of the slide, consisting of several white, overlapping geometric shapes that resemble stylized, layered arrows or chevrons pointing to the right. The shapes are set against a solid blue background.

# Motion to Recommend Adoption of Safety Targets