



2020 Urban Boundary and Functional Classification

Palm Beach County

September 19, 2024





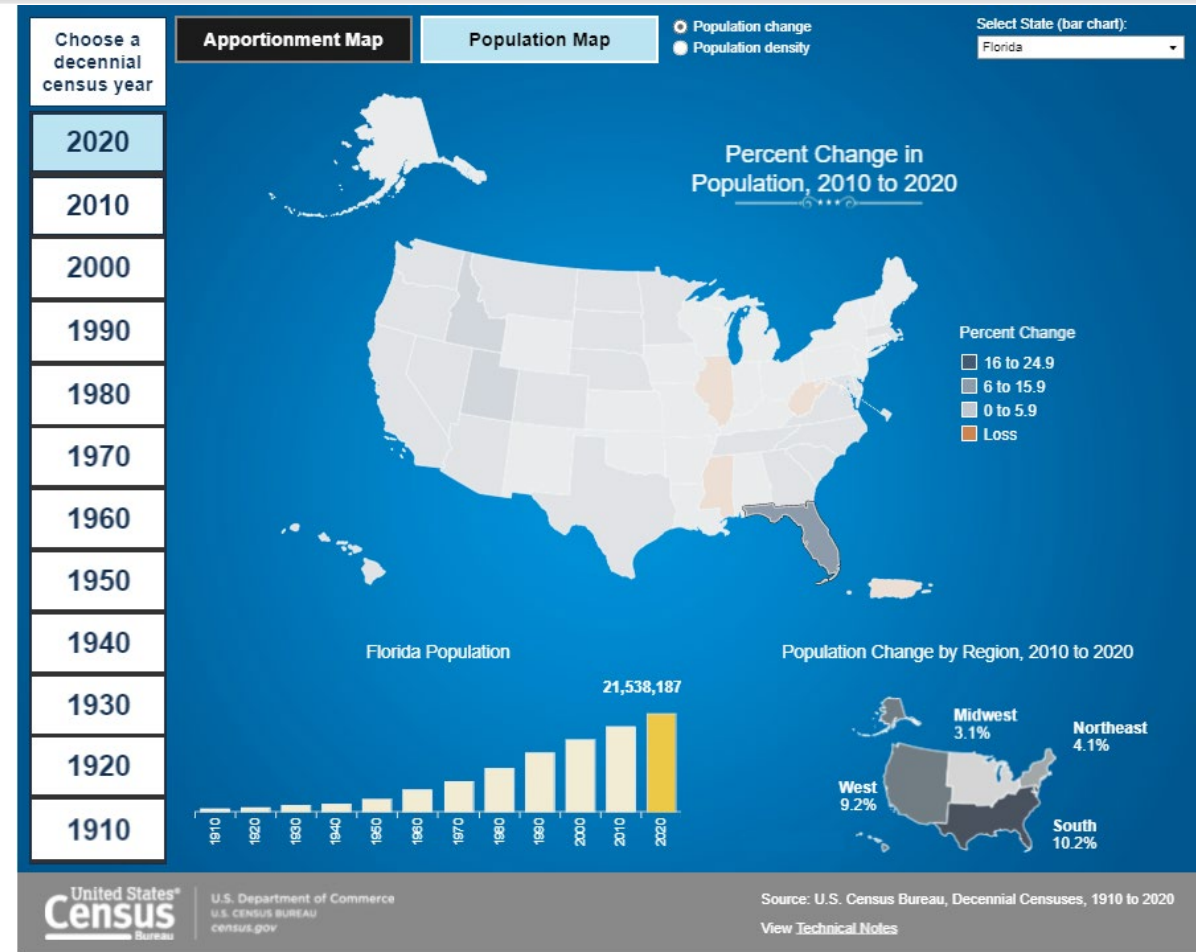
2020 Census Urban Boundary and Functional Classification Update

United States[®]
Census
2020

Urban Areas are revised every 10 years based on population counts from decennial census.

Urban Boundaries are adjusted to be consistent with transportation needs.

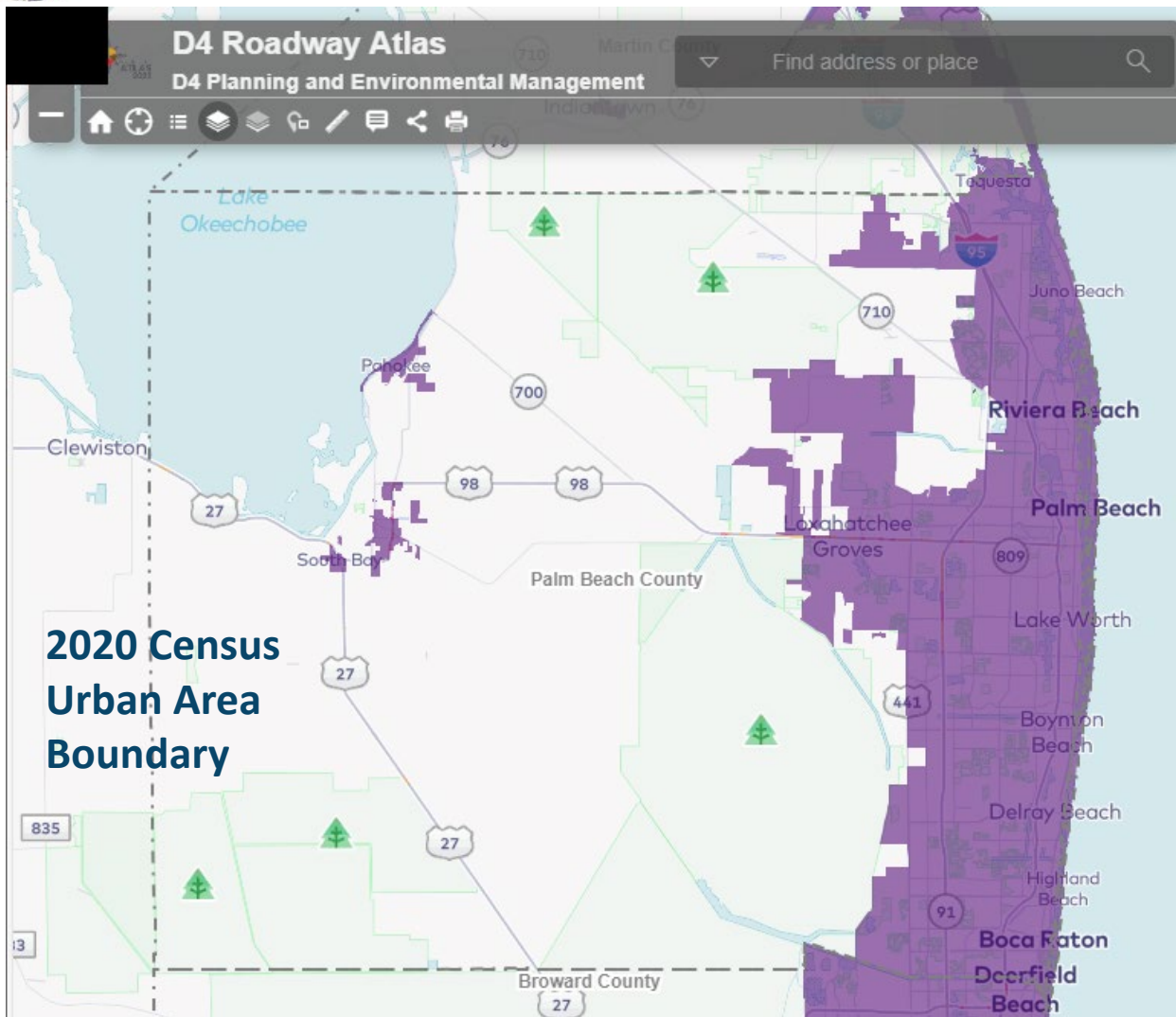
Functional Classification reviewed and updated in conjunction with adjusted urban boundaries.



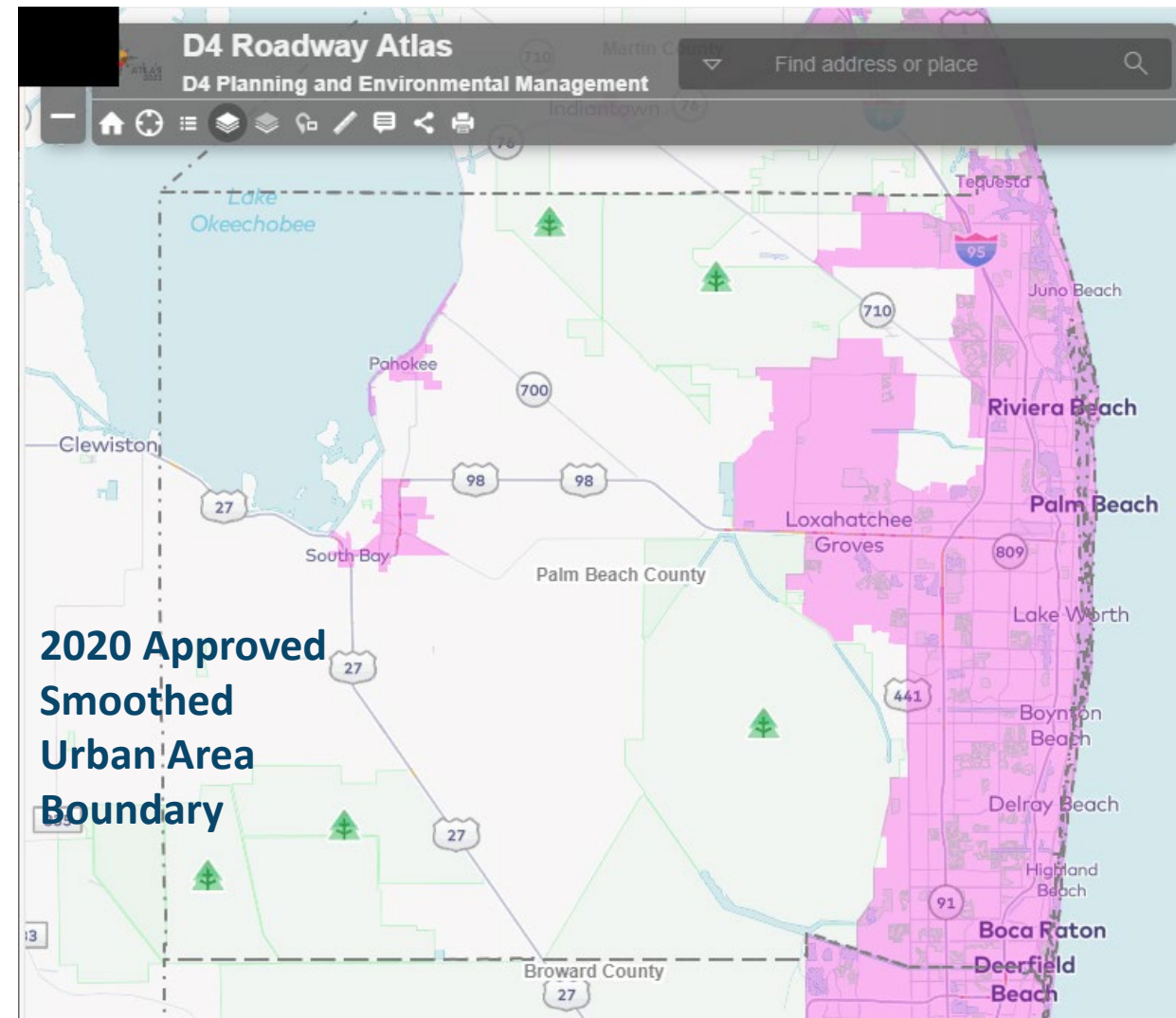
[Historical Apportionment Data Map \(Interactive\) \(census.gov\)](https://census.gov)



2020 Census UAB and Approved Smoothed UAB



**2020 Census
Urban Area
Boundary**



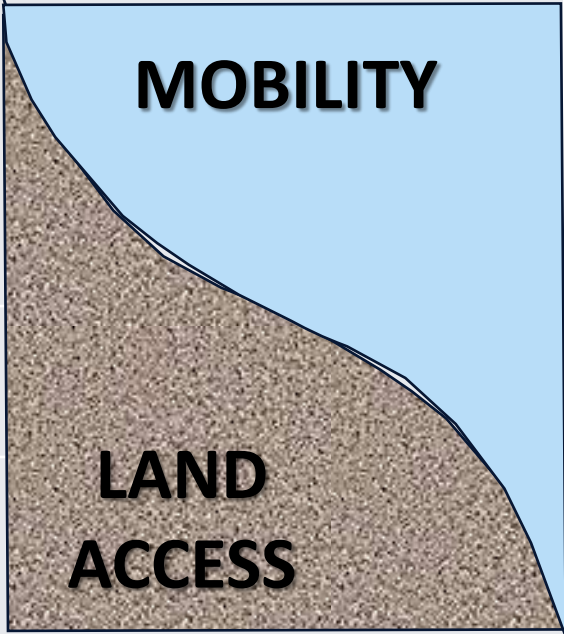
**2020 Approved
Smoothed
Urban Area
Boundary**





Functional Classification

Correlation of Mobility, Land Access, and Functional Classification

Proportion of Services	Functional Classification	Generally
	Principal Arterials	Primarily, freeways and interstates, help move people and goods longer distances and connect to other communities.
	Minor Arterials Collectors	These facilities movement within the vicinity.
	Locals	Local roads are lower in mobility and have direct access to properties.

Source: FHWA Functional Classification Guidelines – Early Edition

July 1, 2024





Functional Classification - Overview

- Functional Classification (Funclass) is a method to describe the usage of roadways within the immediate area, regionally for some roadways and statewide for others.
- Federal Highway Administration requires roadways to be functionally classified to fund roadway improvements and perform analysis of the network of roadways.
- Federal-aid Eligibility is determined by Functional Classification which includes roadways higher than Local or Rural Minor Collector.
 - Surface Transportation Block Grant (STBG) funds are used on Federal-aid roadways.
 - Federal Highway-Emergency Relief (FHWA-ER) are used after a disaster declaration (e.g., hurricane, floods, tornados,...)





Functional Classification - Roles

- FDOT performs initial review and determination of Funclass.
- City and County agencies review Funclass within and adjacent to their boundaries providing concurrence or recommendations for Funclass of roadways.
- MPO/TPO/TPA approve the Funclass by signing the official maps.
- FDOT & FHWA approve the Funclass by signing the official maps.



Functional Classification –Evaluation



FFC	Federal Functional Classification	2023 Mileage	2024 Mileage	Differences 2024 - 2014
01	RURAL – Principal Arterial - Interstate	0.145	-	-0.145
02	RURAL – Principal Arterial - Expressway	0.170	-	-0.170
04	RURAL – Principal Arterial - Other	68.946	81.960	13.014
06	RURAL – Minor Arterial	28.621	17.517	-11.104
07	RURAL – Major Collector	34.330	51.604	17.274
08	RURAL – Minor Collector	29.633	15.318	-14.315
09	RURAL – Local	68.670	68.670	0.000
	RURAL – Subtotal	230.515	235.069	4.554
FFC	Federal Functional Classification	2023 Mileage	2024 Mileage	Differences 2024 - 2014
11	URBAN – Principal Arterial - Interstate	45.873	46.018	0.145
12	URBAN – Principal Arterial - Expressway	44.391	44.561	0.170
14	URBAN – Principal Arterial - Other	241.698	249.886	8.188
16	URBAN – Minor Arterial	255.517	256.361	0.844
17	URBAN – Major Collector	289.477	288.722	-0.755
18	URBAN – Minor Collector	222.982	319.690	96.708
19	URBAN – Local	2,614.308	2,511.275	-103.033
	URBAN – Subtotal	3,714.246	3,716.513	2.267
	Grand Total	3,944.761	3,951.582	6.821

Note:

*HPMS Local Mileage for 2023 was used to augment this report to show the total Mileage within Palm Beach County.



**2020 FEDERAL
FUNCTIONAL
CLASSIFICATION AND
URBAN AREA
BOUNDARIES MAP**

**PALM BEACH COUNTY
Western Extent**

Legend

2000 US Decennial Urban Area

Federal Functional Classifications (FFC)

- 1 - Principal Arterial Interstates (FFC)
- 2 - Principal Arterial Expressway (FFC)
- 3 - Principal Arterial Other (FFC)
- 4 - Minor Arterial (FFC)
- 5 - Major Collector (FFC)
- 6 - Minor Collector (FFC)
- 7 - Local (FFC)

Urban Area (UA) Boundaries

- 1 - Principal Arterial Interstates (UA)
- 2 - Principal Arterial Expressway and Expressway (UA)
- 3 - Principal Arterial Other (UA)
- 4 - Minor Arterial (UA)
- 5 - Major Collector (UA)
- 6 - Minor Collector (UA)
- 7 - Local (UA)

Recommended By:
Final Draft

Florida Department of Transportation Date

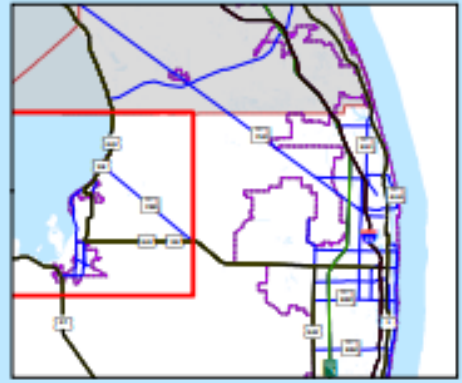
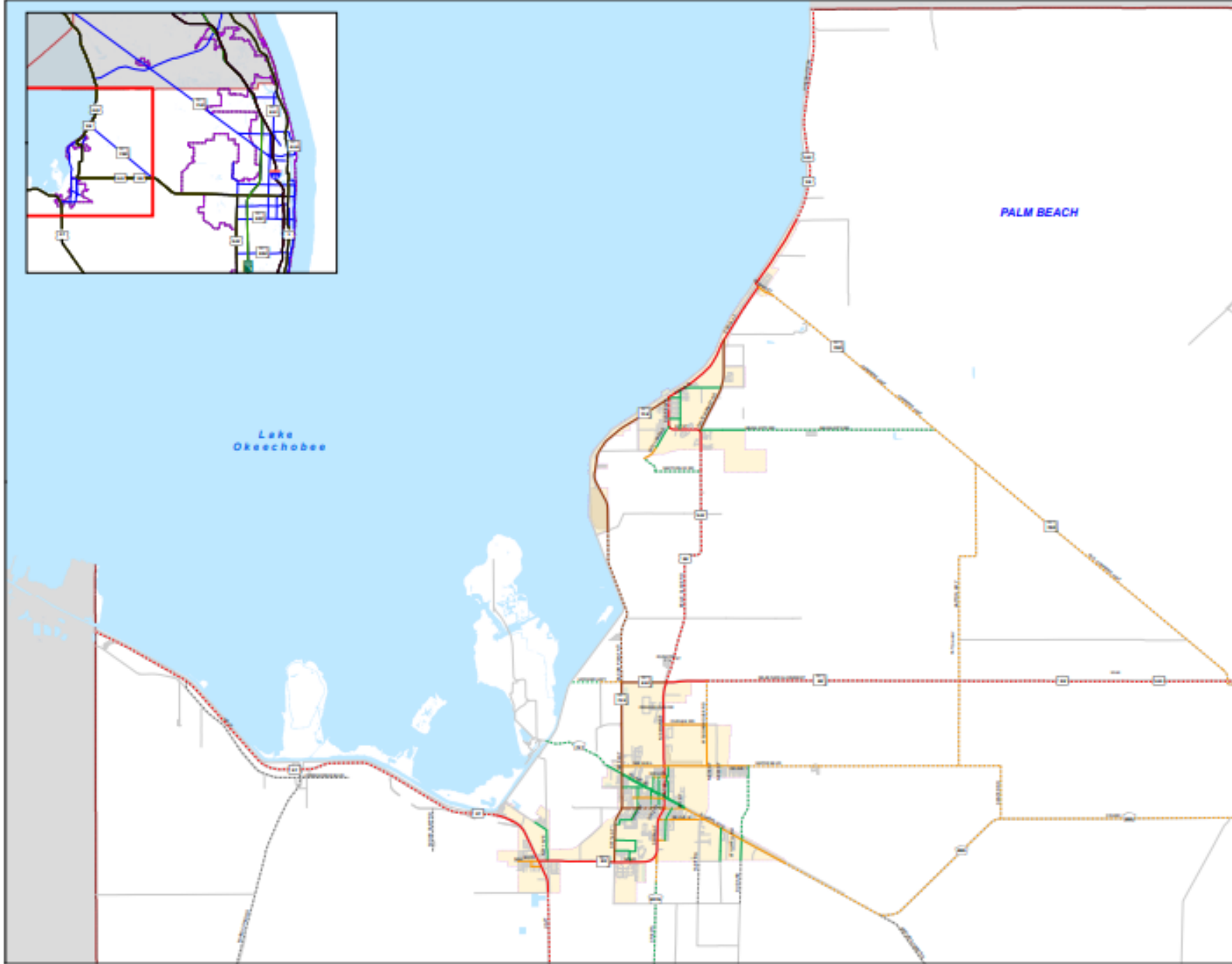
Transportation Planning Agency Chair Date

Approved By:

Federal Highway Administration Date

Prepared By:
FLORIDA DEPARTMENT OF TRANSPORTATION
in cooperation with the
US DEPARTMENT OF TRANSPORTATION

File Created:
08/24/2024



**2020 FEDERAL
FUNCTIONAL
CLASSIFICATION AND
URBAN AREA
BOUNDARIES MAP**

**PALM BEACH COUNTY
Northern Extent**



Recommended By:
Final Draft

Florida Department of Transportation Date

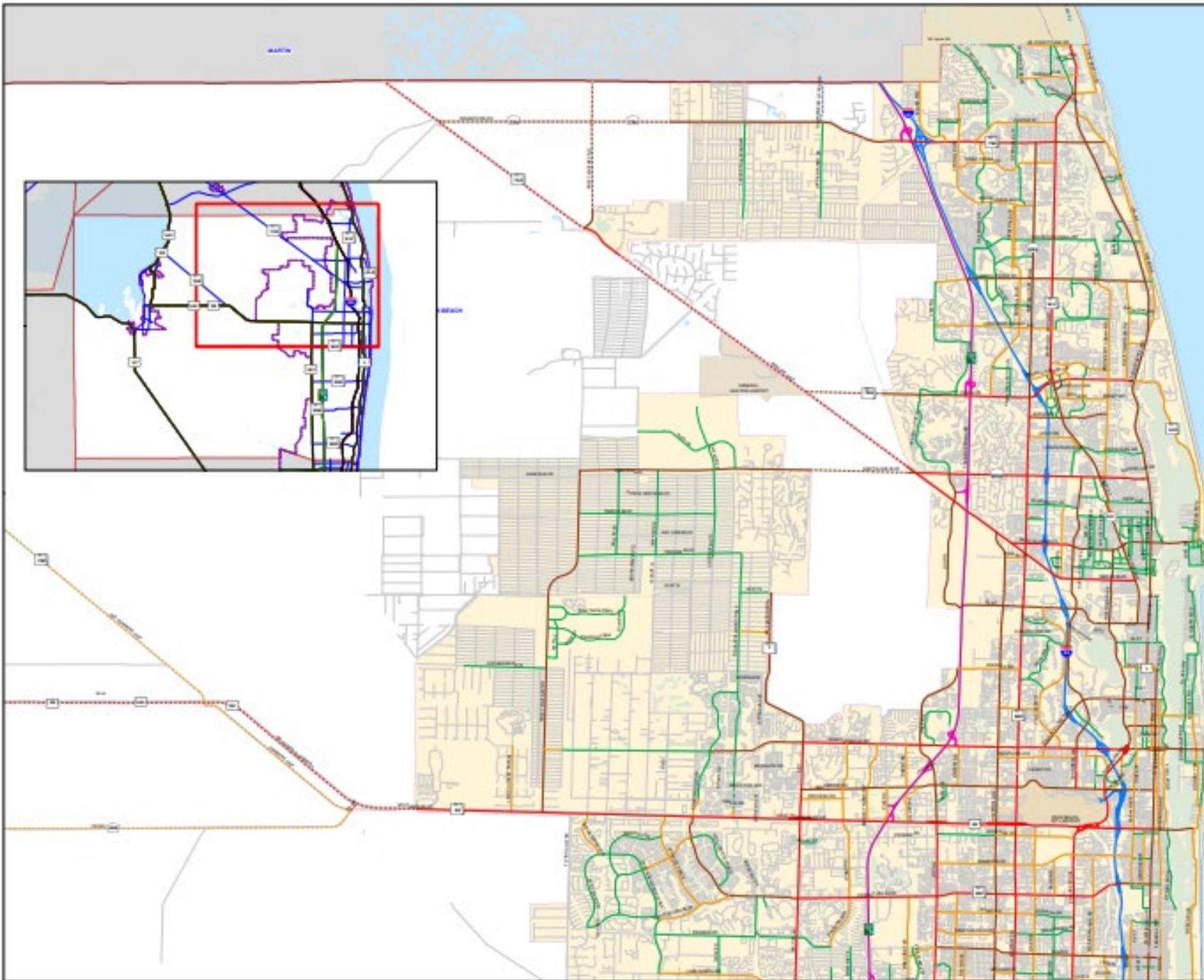
Transportation Planning Agency Chair Date

Approved By:

Federal Highway Administration Date

Prepared By:
FLORIDA DEPARTMENT OF TRANSPORTATION
in cooperation with the
US DEPARTMENT OF TRANSPORTATION

File Created:
05/29/2024



**2020 FEDERAL
FUNCTIONAL
CLASSIFICATION AND
URBAN AREA
BOUNDARIES MAP**

**PALM BEACH COUNTY
Southern Extent**

- Legend**
- Area Not Shown on Map**
- Federal Functional Classification (FFC)**
- 01 - Principal Arterial/Interstate RURAL
 - 02 - Principal Arterial/Expressway RURAL
 - 03 - Principal Arterial/Other RURAL
 - 04 - Minor Arterial RURAL
 - 05 - Major Collector RURAL
 - 06 - Minor Collector RURAL
 - 07 - Local RURAL
 - 08 - Principal Arterial/Interstate URBAN
 - 09 - Principal Arterial/Expressway and Expressway URBAN
 - 10 - Principal Arterial/Other URBAN
 - 11 - Minor Arterial URBAN
 - 12 - Major Collector URBAN
 - 13 - Minor Collector (Feed-Net) URBAN
 - 14 - Local URBAN

Recommended By:
Final Draft

Florida Department of Transportation Date

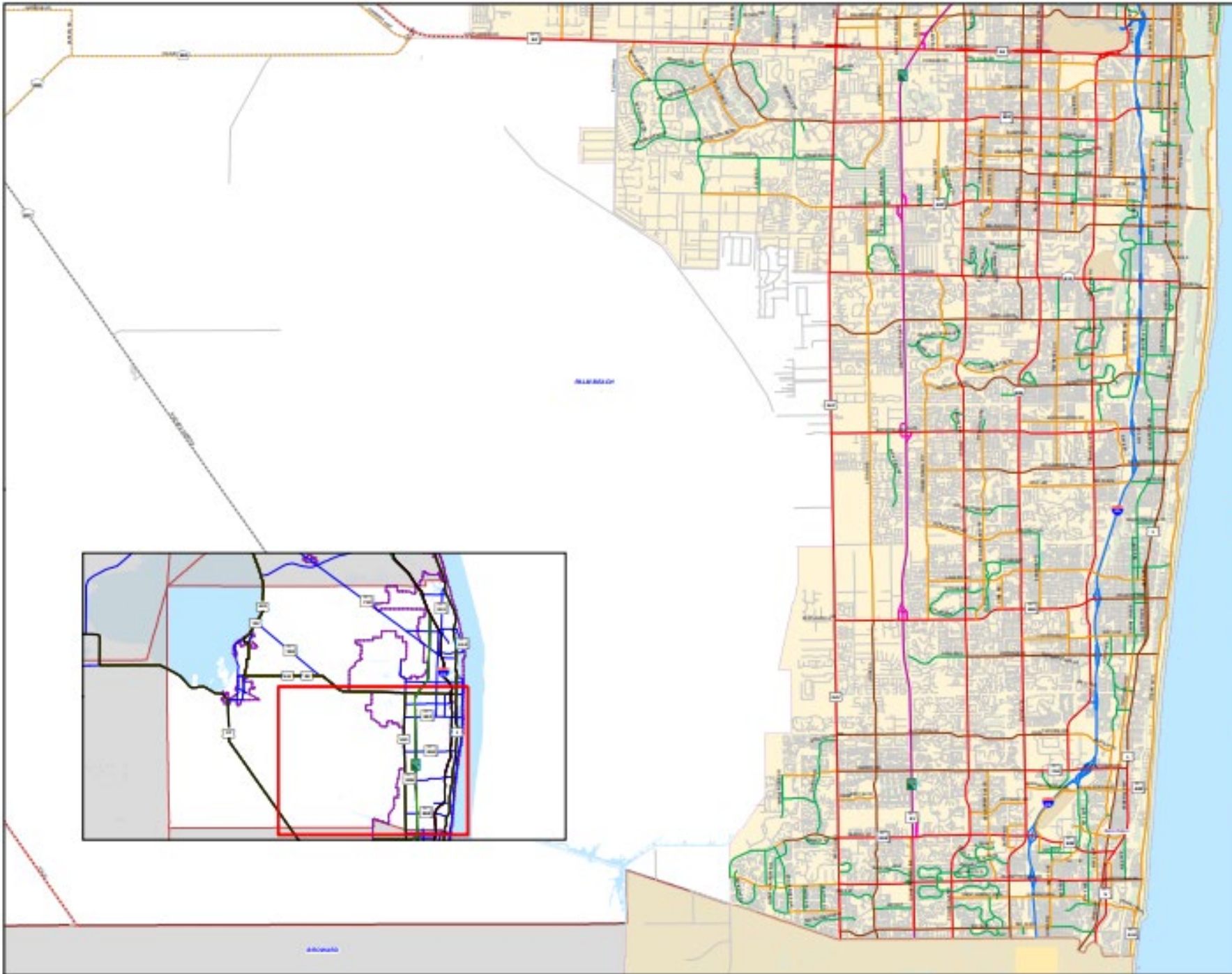
Transportation Planning Agency Chair Date

Approved By:

Federal Highway Administration Date

Prepared By:
FLORIDA DEPARTMENT OF TRANSPORTATION
in cooperation with the
US DEPARTMENT OF TRANSPORTATION

File Created:
08/24/2024





Functional Classification – Status

Completed Activities

- Smoothed Urban Boundaries were approved by Board earlier this year
- Functional Class reviewed by FDOT, Cities, Counties, & MPO
- Draft Final Functional Class submitted to Central Office and FHWA for Pre-Approval
- Maps were Pre-Approved from Central Office and FHWA

Pending Activities

- Submit maps to TPA for Signatures
- Submit maps to Central Office/FHWA for Signatures
- Update Roadway Characteristics Inventory (RCI) System





Questions?





Motion to Approve the 2020 Roadway Functional Classification Update