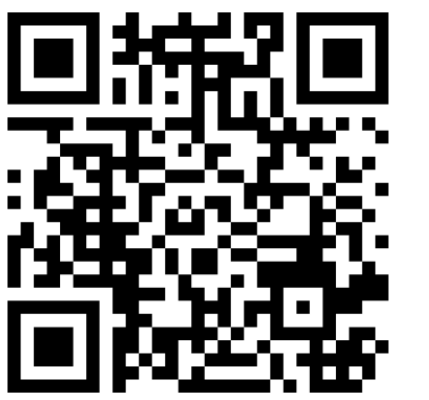
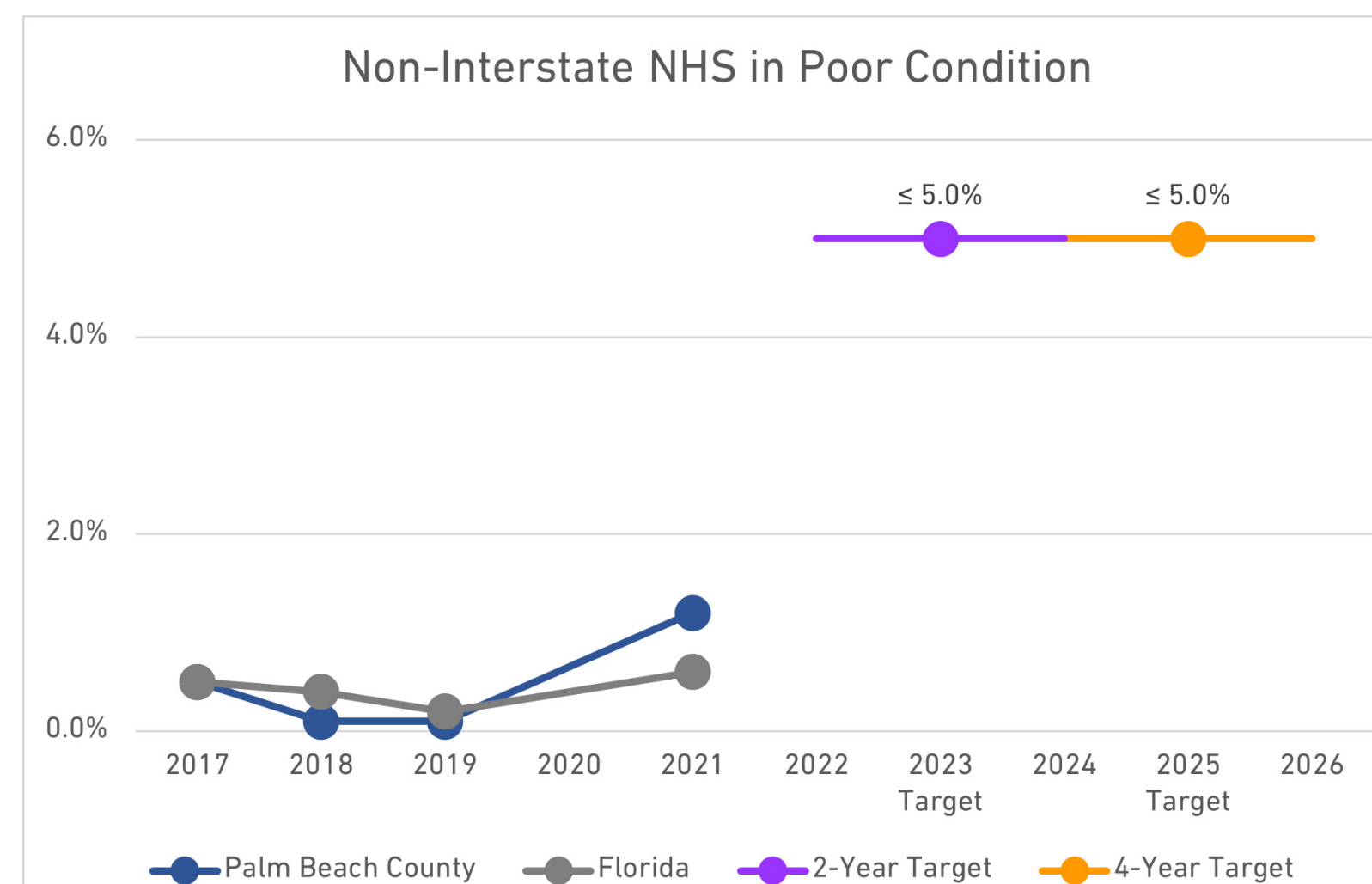
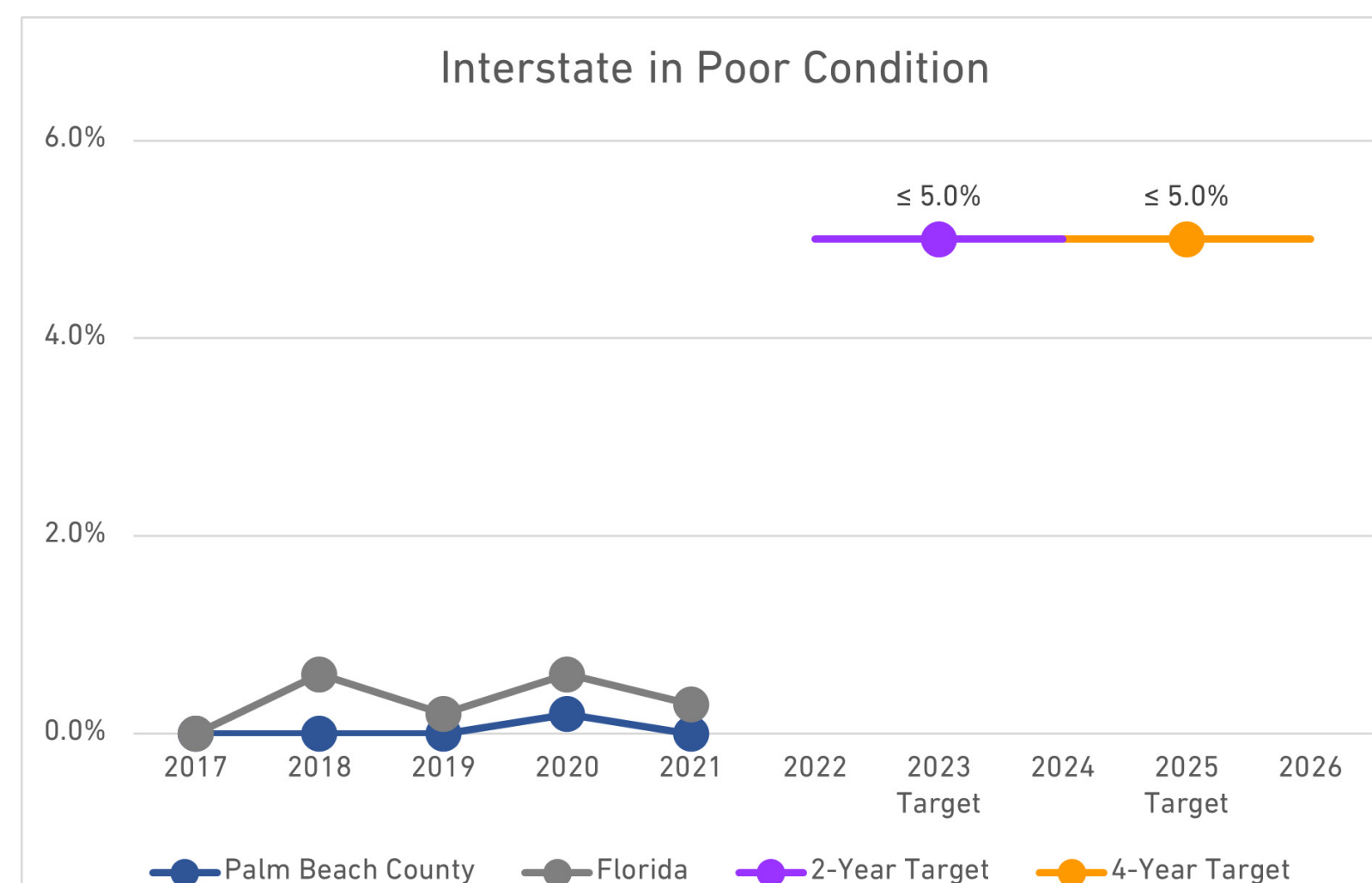
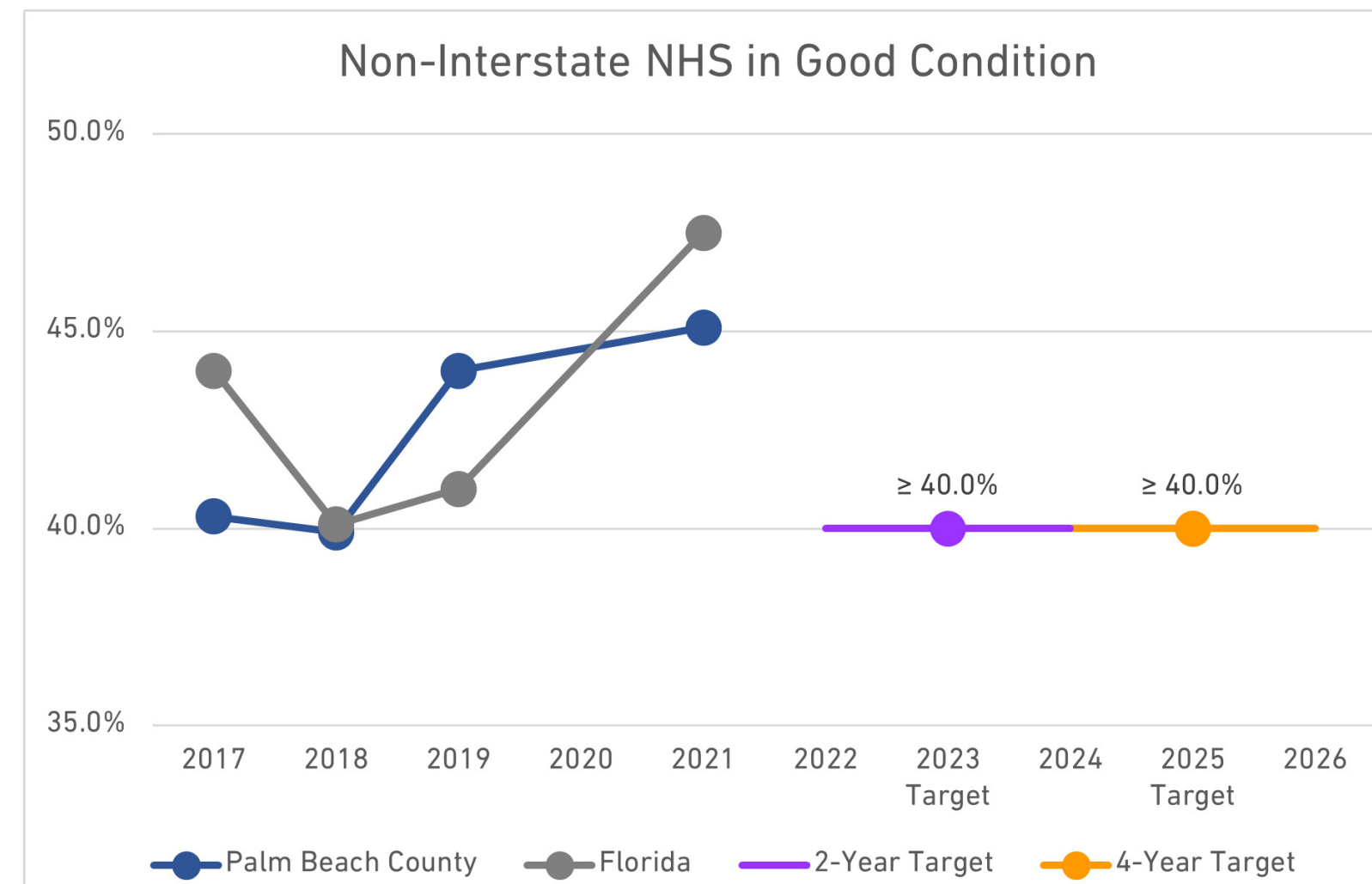
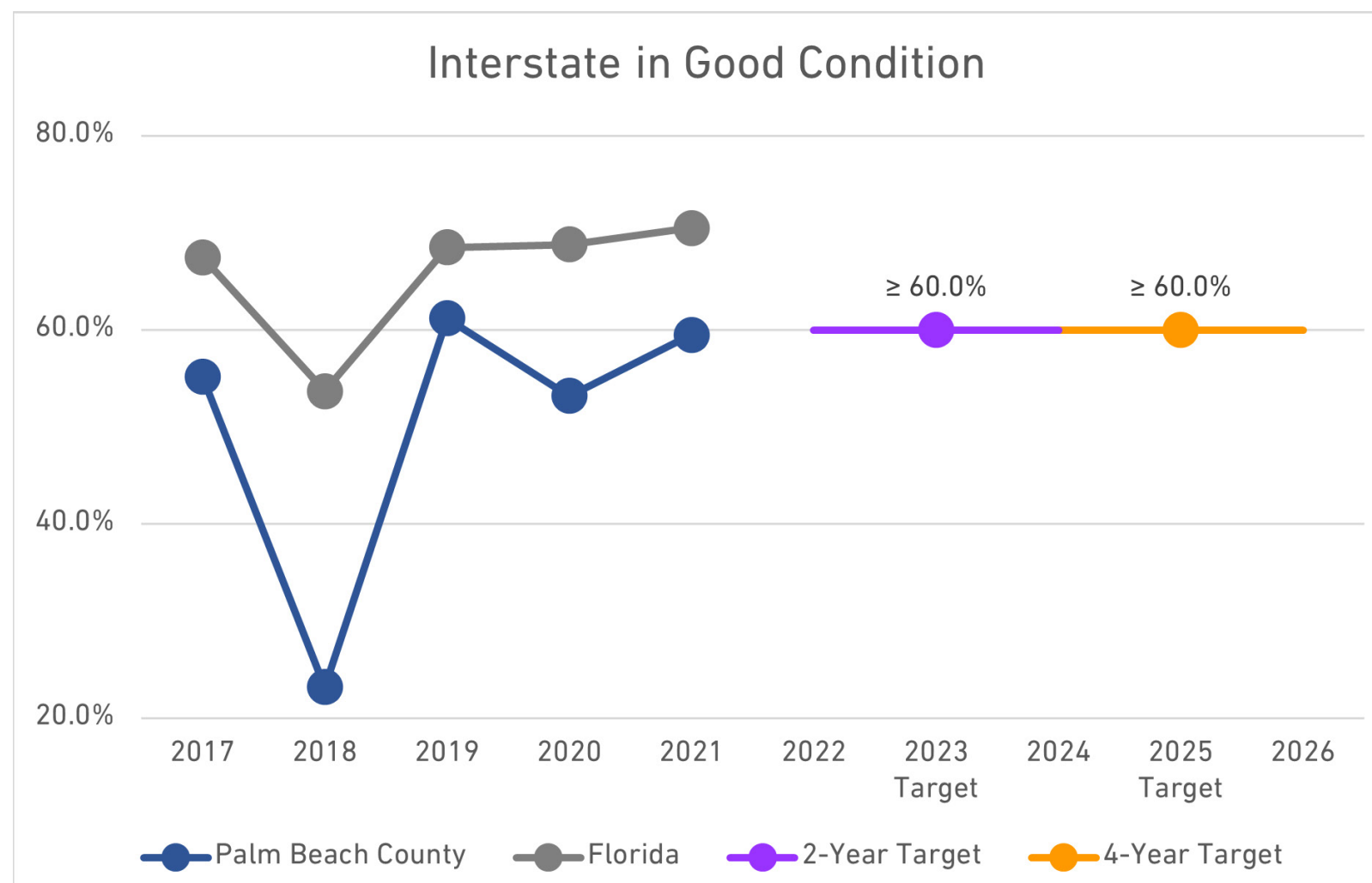


Pavement Condition Performance Measures



Join at Menti.com
Use code 2558 4013



Source: FDOT State Materials Office

Compliance with Florida Statutes requires 80% of pavement on the State Highway System (SHS) to meet FDOT standards.

Federal requirements identify the following metrics for performance based on pavement type:

International Roughness Index (IRI) - IRI is the road roughness index most commonly used worldwide for evaluating and managing road systems. Road roughness is the primary indicator of the utility of a highway network to road users.

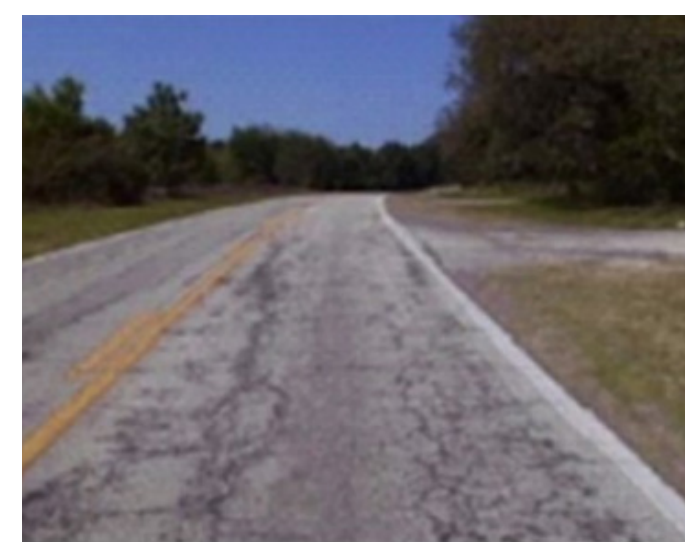
Rutting - surface depressions in asphalt pavements

Faulting - vertical misalignment of jointed concrete pavements

Cracking percent - fissure or discontinuity of the pavement surface not necessarily extending through the entire thickness of the pavement

Present Serviceability Rating (PSR) - an observation-based system used to rate the quality of pavement condition for roadways < 40 miles/hour

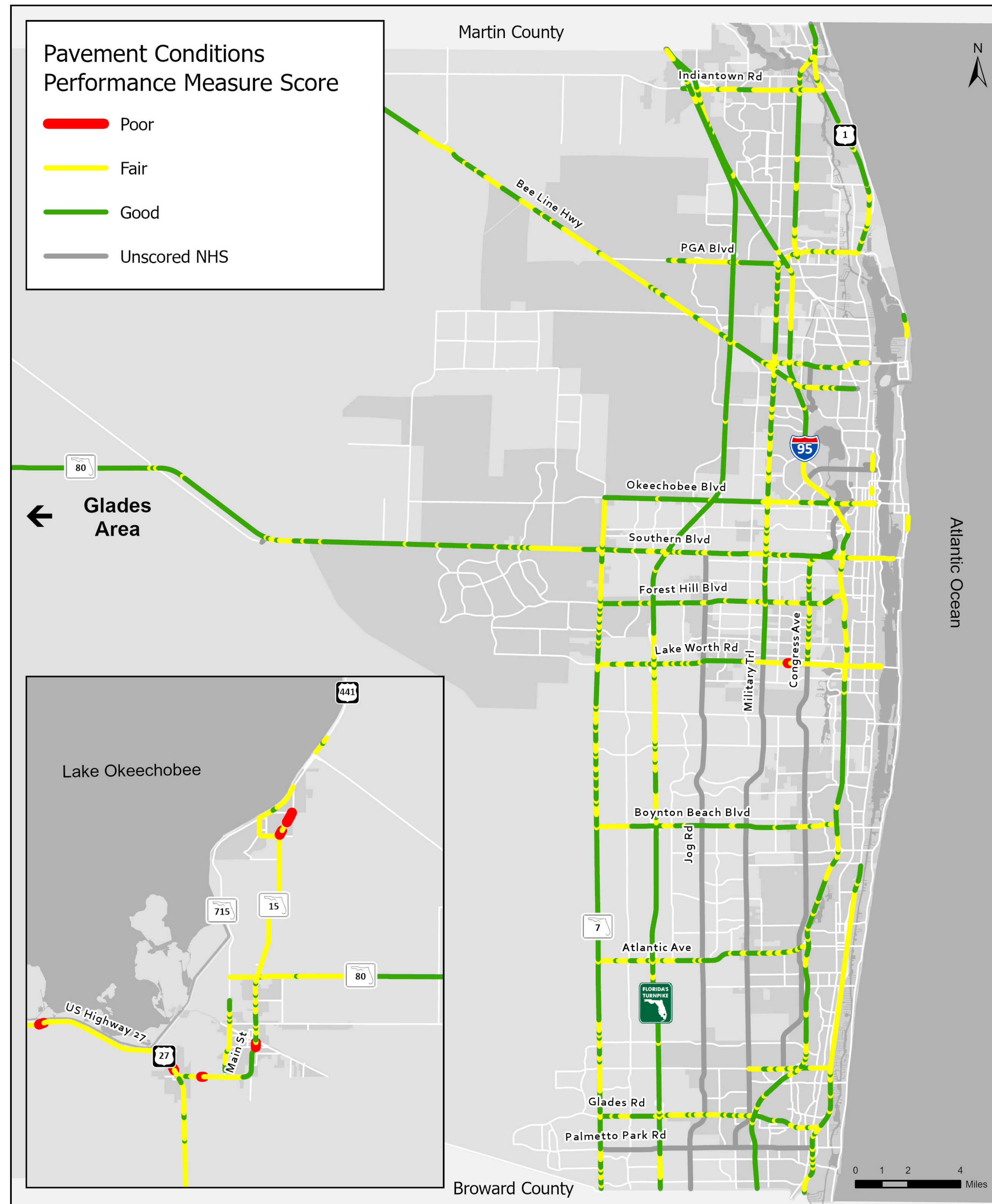
Overall system condition is determined by a combination of the above metrics. Photos are shown to the right to illustrate what conditions may look like.



How it is measured

Measures are calculated for National Highway System (NHS) Interstate and Non-Interstate routes in Good or Poor condition based on lane miles. A section must be in Good condition on all relevant metrics to be labeled Good overall.

- % of pavements of Interstate System in Good condition
- % of pavements of Interstate System in Poor condition
- % of pavements of Non-Interstate NHS in Good condition
- % of pavements of Non-Interstate NHS in Poor condition



Date: 8/11/2023

Source: FDOT State Materials Office