

Palm Beach Transportation Planning Group

GOVERNING BOARD

MEMBER TRAINING

February 24

9 - 11 A.M.



Agenda

- Welcome
- What is an MPO?
- Who is the Palm Beach TPA?
- Governing Board & Advisory Committee Structure & Function
- Core Work Products
- Key Initiatives
- Funding
- Public Participation
- Regional Coordination





What is a Metropolitan Planning Organization?

Melissa Murray, Public Relations Director



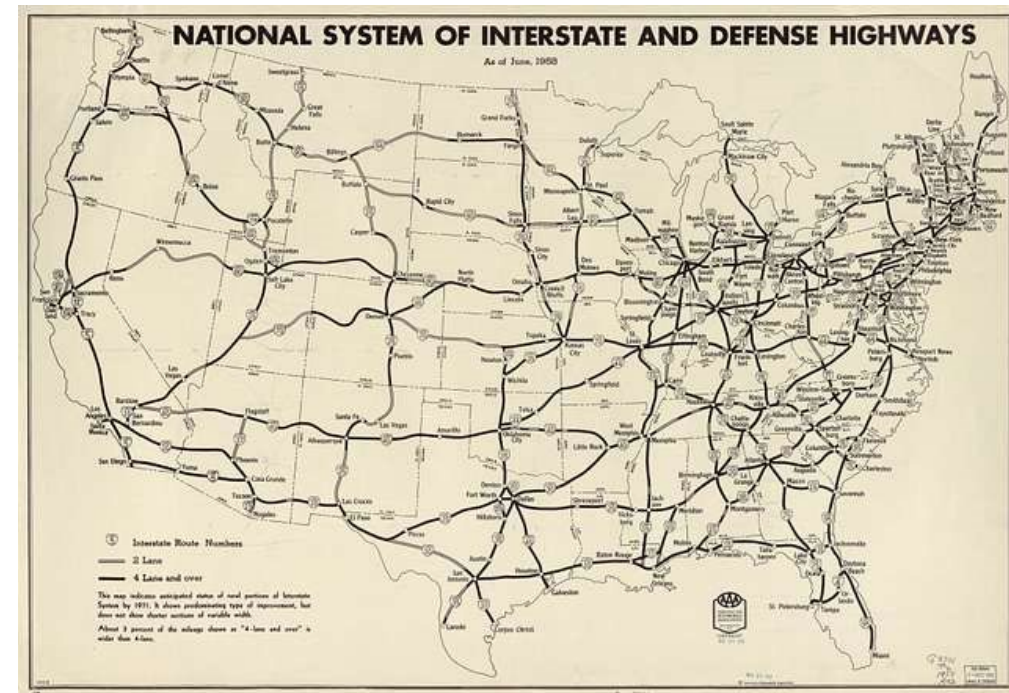
History of MPOs

Interstate Highways Program in 1940s & 50s

- National defense, commerce and trade, economic activity and job creation

Federal-Aid Highway Act of 1956

- Established the Highway Trust Fund from federal fuel tax
- States, not cities, determined Interstate plans – created destruction of communities



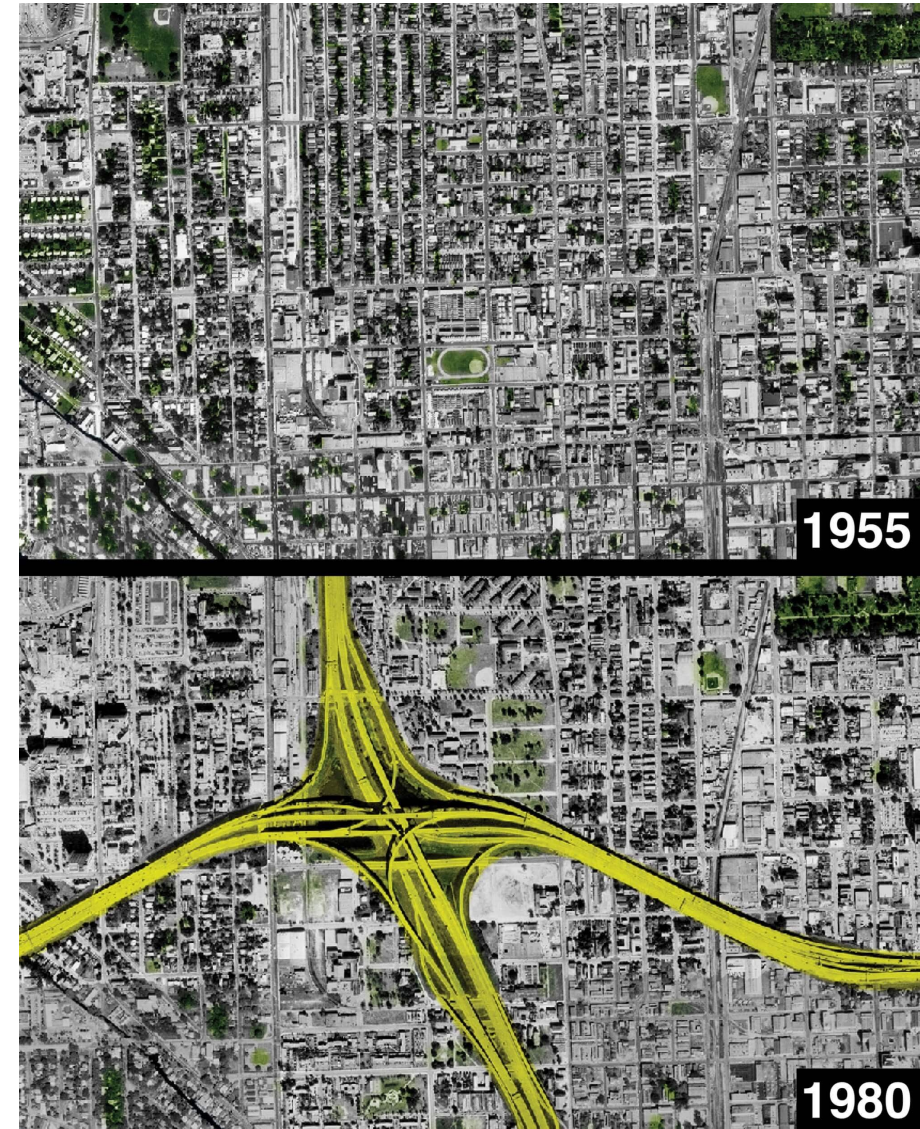


History of MPOs

Miami's Overtown Neighborhood

- Neighborhoods bulldozed in the 1960s for the construction of I-95
- 12,000 residents, nearly all Black, were forcibly displaced due to highway construction

Source: Segregation by Design





History of MPOs

Transit

- Cities took over transit services to avoid bankruptcy or closure
- First federal support for transit – Housing Act of 1961
- This supported metro-level planning

Federal-Aid Highway Act of 1962

- Continuous, Comprehensive, Cooperative

Civil Rights Act of 1964

- Mandates nondiscriminatory conduct in all federally-supported programs

National Environmental Policy Act of 1969

- Environmental impact consideration mandated



CoTran – Palm Beach County's transit system from 1980 - 1996

History of MPOs

Federal-Aid Highway Act of 1973

- Mandated Metropolitan Planning Organizations (MPOs) for urban areas with more than 50,000 people
- A portion of Highway Trust Fund dollars is allocated to MPOs for planning

Intermodal Surface Transportation Efficiency Act of 1991

- Created requirements for planning documents and authority for decision-making



1978 MPO Logo

History of MPOs

Fixing America's Surface Transportation (FAST) Act of 2015

- Created requirement for performance-based planning, now called "Performance Measures"
- Added freight as a priority
- Transfers funds from General Fund to Highway Trust Fund

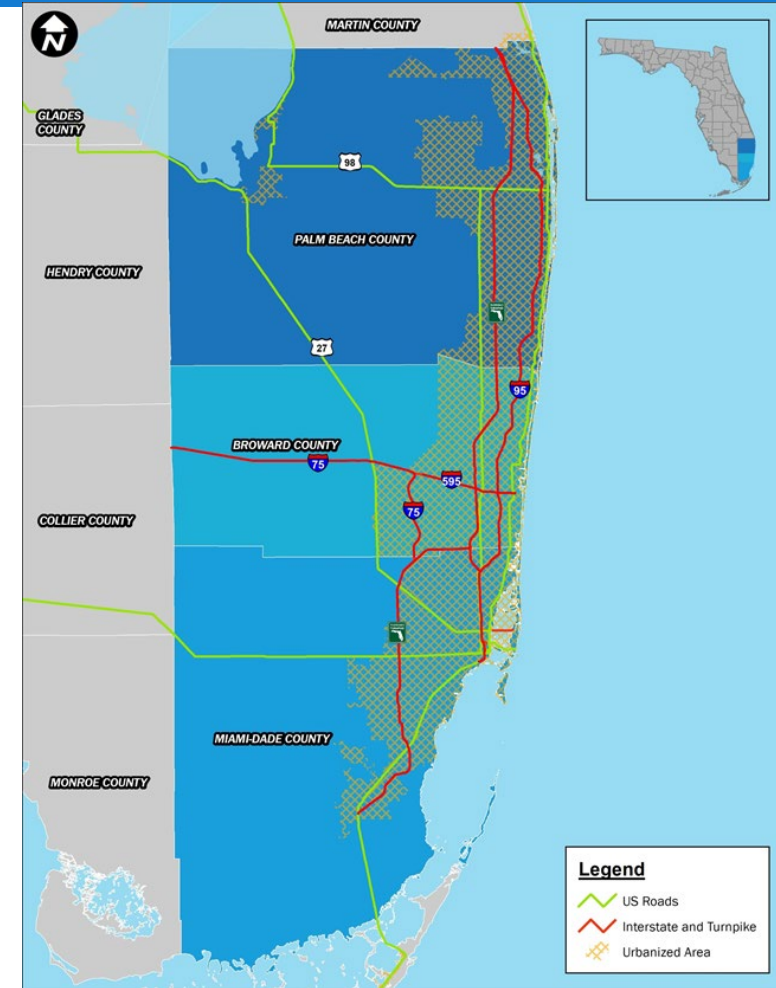
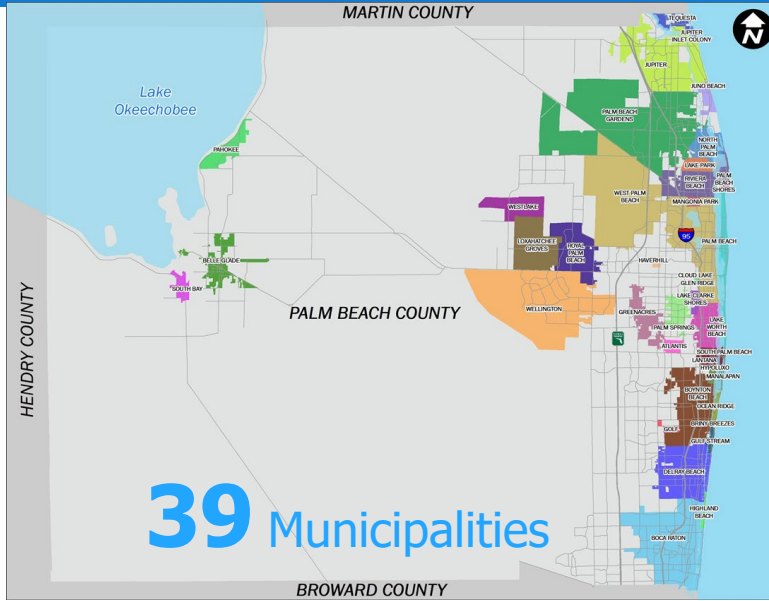
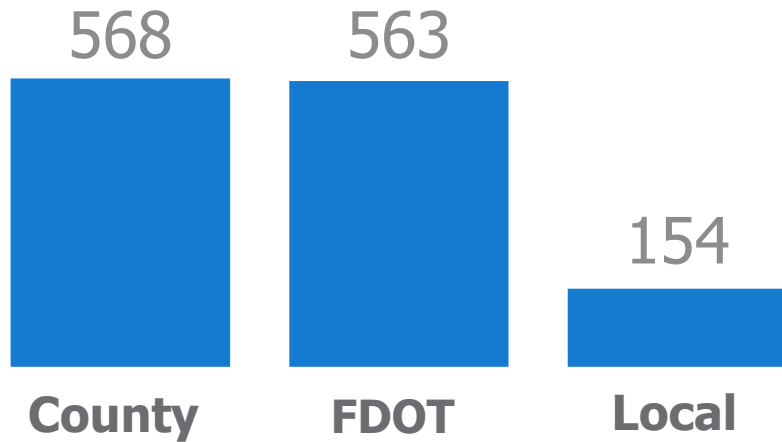
Bipartisan Infrastructure Law

- Enacted November 15, 2021
- \$550B in new investments like transportation, water, broadband and energy



What is a Metropolitan Planning Organization (MPO)?

Roadway Miles



What is a Metropolitan Planning Organization (MPO)?

- Federally designated agency
- Consists of Board members, committee members, TPA staff and public stakeholders
- Provides local elected officials input into the planning and implementation of federal transportation funds



PALM BEACH
Transportation
Planning Agency





Who is the Palm Beach TPA?

Melissa Murray, Public Relations Director



Mission & Vision

MISSION

Collaboratively plan, prioritize and fund the transportation system

VISION

A safe, efficient and connected multimodal transportation system




Who is the Palm Beach TPA?

- Prioritize more than \$600 million of federal, state and local transportation dollars to implement projects
- Governing Board is supported by staff and has three advisory committees

Role of the TPA Governing Board

- Sets the “big picture” framework for transportation decisions
- Make planning and programming decisions
- Direct authority for TPA plans and programs





Governing Board & Advisory Committee Structure and Function

Melissa Murray, Public Relations Director



Palm Beach TPA

Federally-mandated agency with Governing Board of 21 locally elected officials



Palm Beach Gardens



Palm Beach County



Belle Glade



Boca Raton



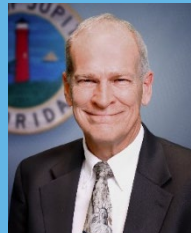
Boynton Beach



Delray Beach



Greenacres



Jupiter



Lake Worth Beach



Palm Beach County – Including Palm Tran, SFRTA/Tri-Rail, and PBIA/Airports



Palm Springs



Port of Palm Beach



Riviera Beach



Royal Palm Beach



Wellington



West Palm Beach



Advisory Committees

- **Technical Advisory Committee (TAC)**
 - Provides technical review, comments and recommendations
 - Mainly made of technical staff representing local governments within Palm Beach County
- **Citizen's Advisory Committee (CAC)**
 - Provides a "citizen's eye" view of transportation in PBC
- **Vision Zero Advisory Committee (VZAC)**
 - Aims to advance elements of the TPA's Vision Zero Action Plan oriented around pedestrian and bicycle safety
- **Transportation Disadvantaged (TD) Local Coordinating Board (LCB)**
 - Focuses on needs of TD population - older adults, persons with disabilities, persons of low income and children at risk



What is Robert's Rules of Order?

- Allows for many communication styles to work together
- Tool to focus on the work at hand
- Strong set of guidelines, but not “law”



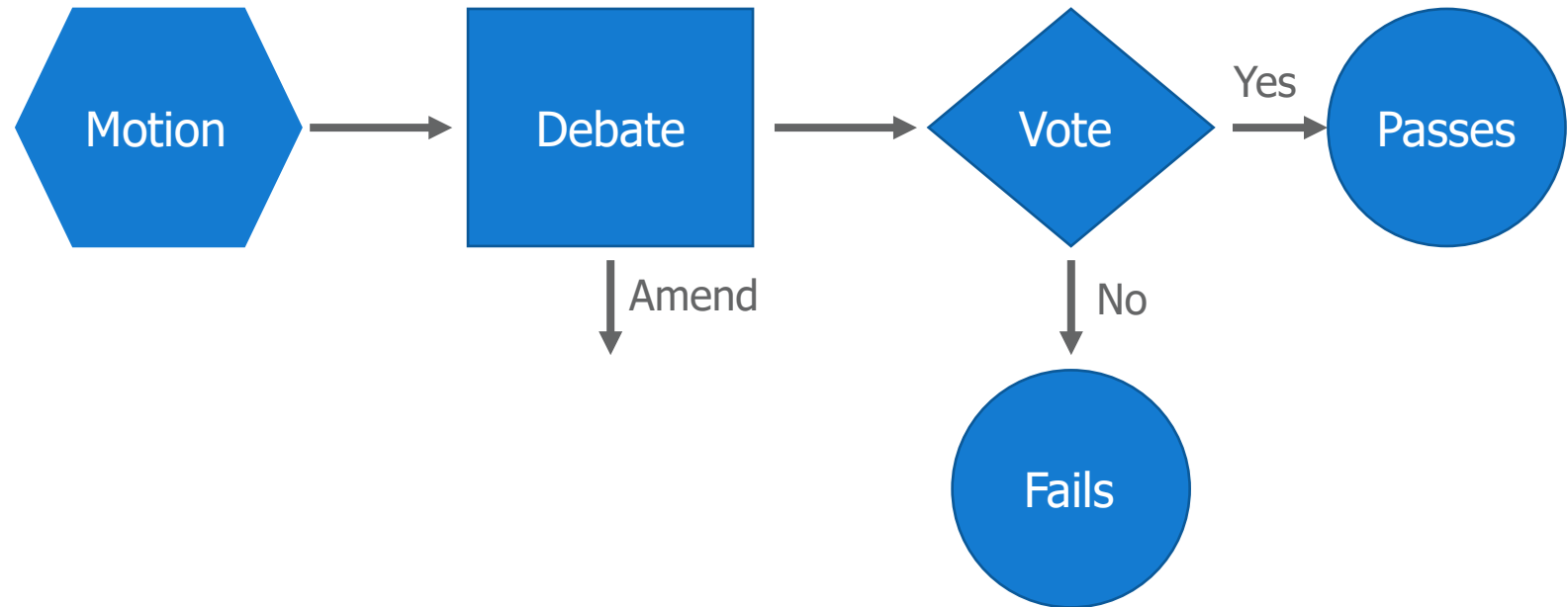
Robert's Rules of Order

- The standard for facilitating discussions and group decision-making

- Five types of motions:

- Main Motion
- Substitute Motion
- Motion to Table
- Motion to Postpone
- Motion to Reconsider

- Amendment





Operating Procedures

- Facilitates efficient conduct by the TPA
- Outlines roles and functions of the Governing Board and advisory committees
- Meeting guidelines, emergency powers and TPA authority
- Can be found at PalmBeachTPA.org/Board and all advisory committee pages





Core Work Products

Andrew Uhler, Deputy Director of Programs

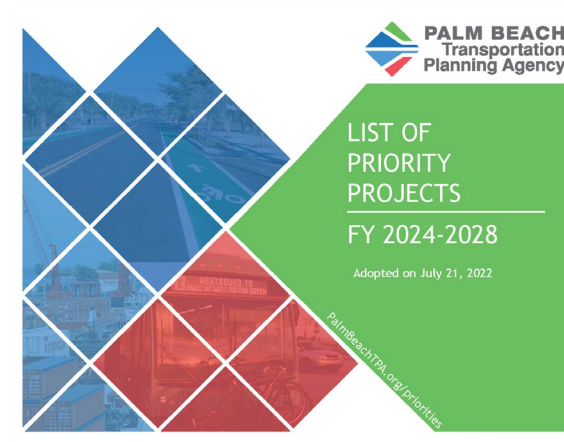
Core Work Products



**Unified Planning
Work Program**



**Long Range
Transportation Plan**



**List of Priority Projects
(State Requirement)**



**Transportation
Improvement Program**

Unified Planning Work Program

- 2-Year Agency Operational Plan & Budget
July 1, 2022 - June 30, 2024
- Application for Federal Grant Funds
- Includes tasks and identifies:
 - **What?** Deliverables
 - **Who?** Staff and/or consultants
 - **When?** Completion dates
 - **How Much?** Budget and funding source



Strategic Plan

- Developed each year by staff with input from advisory committees and Board
- Started in FY 2017
- Can be found at PalmBeachTPA.org/Strategic-Plan

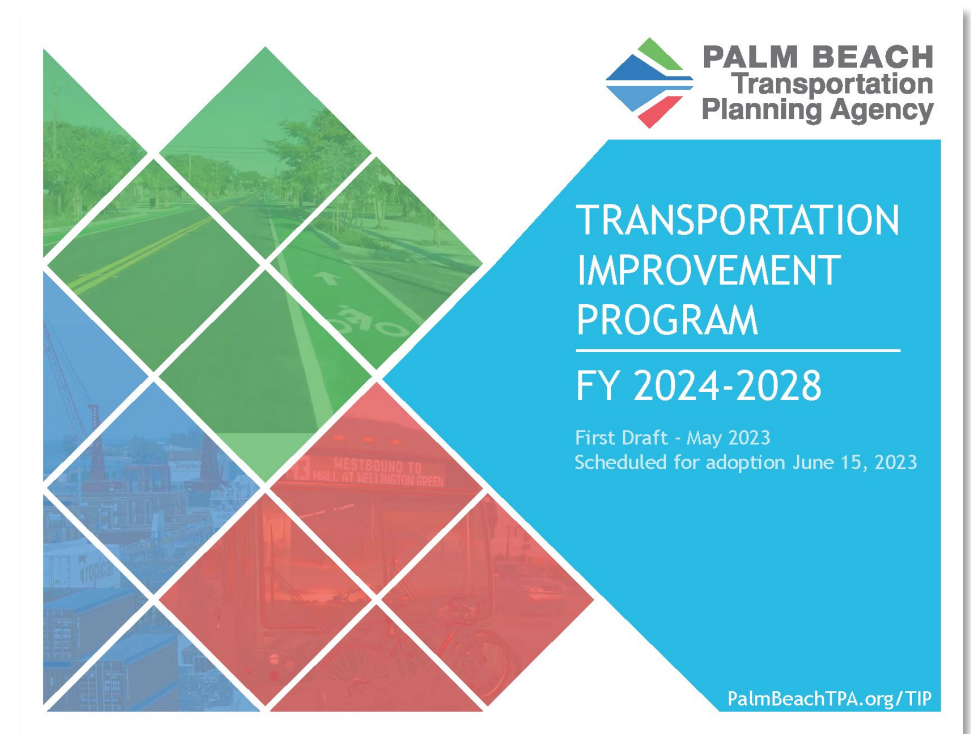


ENGAGE THE PUBLIC

Action	Outcome(s)
Promote interactive comment map	
A <u>Collect public comments via online map, surveys and other platforms to inform transportation planning efforts</u>	500 comments
B Expand social media following <u>Increase social media engagement</u>	4,000 followers and 25,000 impressions/month <u>4,500 followers</u> <u>30,000 impressions/month</u>
C Conduct or support outreach events and campaigns	500 respondents 2,000 participants
D Increase Public Awareness of the TPA	40-75 TPA-related media stories
E Present TPA initiatives to partner agencies and groups	15-20 presentations

Transportation Improvement Program

- Staged, multi-year, intermodal program of transportation initiatives
- Developed every year with a 5-year outlook
- Fiscally constrained
- Consistent with the LRTP, local comprehensive plans, and local modal plans



Transportation Improvement Program

- Project not listed in the TIP cannot receive federal funds
- Includes projects to be funded the from State Transportation Trust Fund (STTF)
- Consistent with the FDOT Work Program for federal and state funding
- Includes, for informational purposes, local and privately funded projects





TIP Projects

Approved
TPA Priority List 

TPA PRIORITY
PROJECTS

State Roads/
Major Projects

Local Initiatives Program

Transportation
Alternatives Program

FDOT PRIORITY
PROJECTS AND OTHER
PROJECTS

SIS Capacity

Other FDOT & Local Projects

Airports, Railroads and Seaport

OPERATIONS AND
MAINTENANCE

Major Maintenance

O & M Roadways

O & M Transit

\$3.6 BILLION in funds for the **TRANSPORTATION IMPROVEMENT PROGRAM (TIP)**

Fiscal Years
2023 - 2027

For more information about what makes up these categories check
out our website at **PalmBeachTPA.org**.

TIP Projects by Categories

37
Strategic Intermodal
System (SIS)
Capacity Projects

\$1,488,020,385

68
Transportation
Planning Agency
Priority Projects

\$259,940,951

98
Other FDOT &
Local Projects

\$268,597,091

26
Airports & Seaport
Projects

\$72,560,774

Roadway Operations
& Maintenance
Projects

\$718,019,813

Transit Operations
& Maintenance
Projects

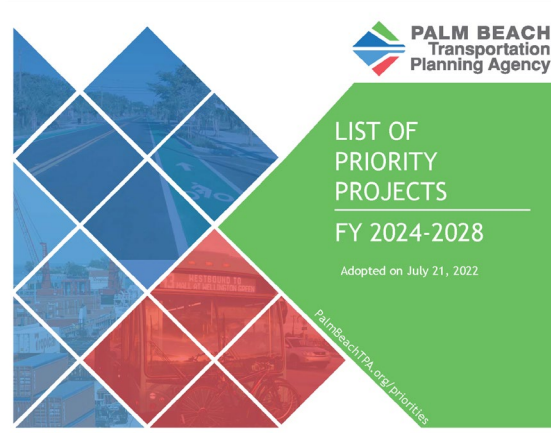
\$568,529,057

TIP Development Process

Project Development



List of Priority Projects (LOPP)



Adopted
July 2022

Draft Tentative Work Program (DTWP)



TPA Endorsed:
requests changes,
additions, or deletions
December 2022

Transportation Improvement Program (TIP)



Up for Adoption
June 2023



Programming and Timing of Projects

	Transportation Improvement Program					Long Range --->			
	2023	2024	2025	2026	2027	2028	2029	2030	2031
Project #1	PE		ROW		CST				
Project #2	PD&E		PE		ROW		CST		
Project #3					PE		ROW		CST

PD&E = Project Development & Environment; PE = Preliminary Engineering;
ROW = Right of Way; CST = Construction



List of Priority Projects

Priorities of the TPA that FDOT considers in the development of the Tentative 5-Year Work Program

Table 2: Local Initiatives Program

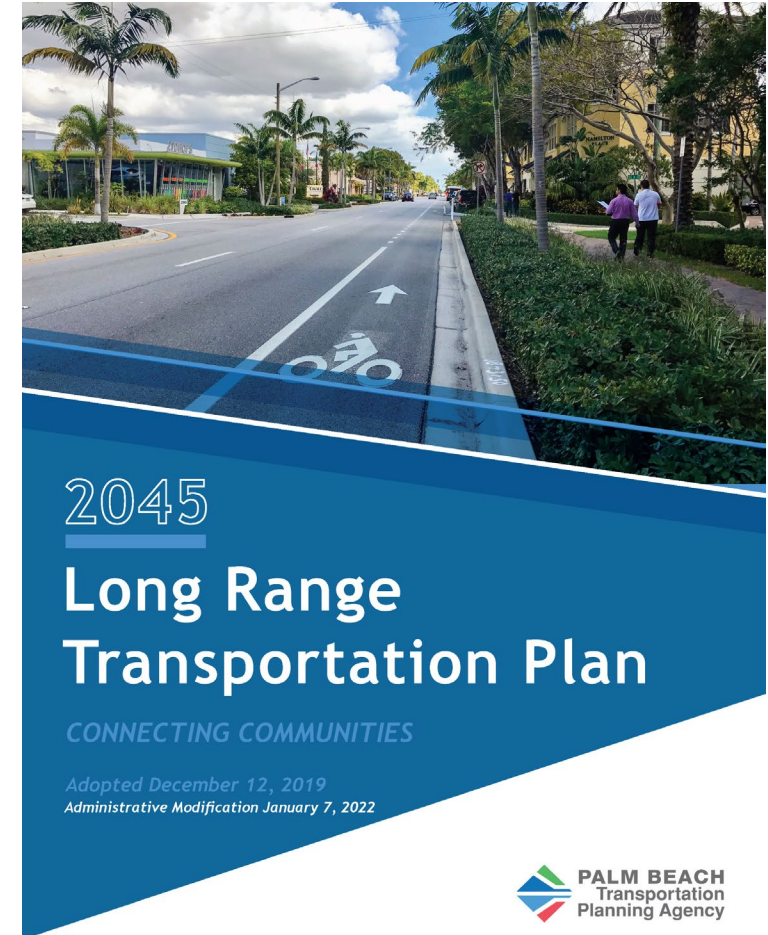
This program is for projects on non-state roadways that are federal-aid eligible. Sources of funding are from the approximately \$22.8 Million/year of the federal Surface Transportation Block Grant (STBG) program, known locally as SU funds, that is allocated to the TPA for prioritization. STGB funds allocated to FDOT, known as SA, sometimes supplement the projects.

Year - Rank	Applicant/Lead Agency	Proj. No.	Location	Description	Total Cost	< FY 23	DTWP FY 2023-2027								Requested Funding	Notes
							FY 23		FY 24		FY 25		FY 26			
--	Palm Beach TPA	4393253 4393254	Surface Transportation (SU) funds to support TPA Planning & Administration as outlined in greater detail in the UPWP		\$18,829		PL \$1,852 SU \$1,733	PL \$1,852 SU \$1,820	PL \$1,852 SU \$1,911	PL \$1,852 SU \$2,006	PL \$1,852 SU \$2,100	\$2,150				
14-6	SFRTA	4297671	Tri Rail Northern Layover Facility: CSX tracks E of I-95 in Mangonia Park/WPB	Construct new facility to enhance O&M for existing system and support Jupiter extension	\$40,733	\$36,150	DSB \$4,583						Tri-Rail advertised for Design. Proposals due in June 2022			
15-2	West Palm Beach	4383901	West Palm Beach: 25th St to Tri-Rail Station to SR 80	Purchase seven (7) vehicles to support new N/S trolley service	\$1,505	\$1,505							Implementation in FY 2023			
15-3	Palm Tran	4383921	Various locations along existing Palm Tran bus routes	Construct 30 transit shelters	\$600	\$600							Implementation in FY 2023			
15-4	West Palm Beach	4383961	Various locations along existing WPB trolley lines	Construct seven (7) trolley shelters	\$571	\$571							Implementation in FY 2023			
17-1 &	West Palm Beach/ FDOT	4415701	36th St & bridge from Australian Ave to Poinsettia Ave in West Palm	Construct buffered bike lanes, pedestrian enhancements and	\$6,523	\$1,323		CST \$5,183	CEI \$17							
17-2	Delray Beach	4415331	Lindell Blvd from Linton Blvd to Federal Hwy/US 1	Construct sidewalks and separated bike lanes	\$12,143		CST \$12,143									

Long Range Transportation Plan

Federal Requirements

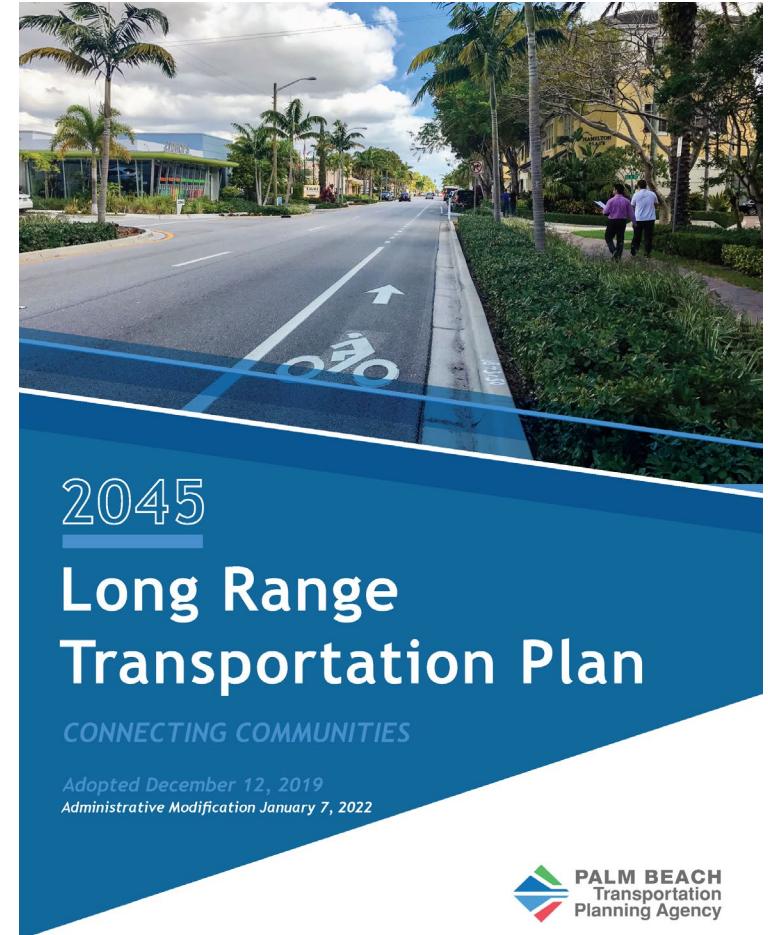
- Sets a vision for the region, and policies, strategies, and projects to achieve it
- Looks forward at least 20 years (TPA creates a 25-year plan)
- Considers all transportation modes
- Reflects federal planning factors & public involvement
- Contains a fiscally constrained financial plan
- Expressed in Year of Expenditure dollars
- Performance based
- Updated every 5 years, amended anytime



Long Range Transportation Plan

State Requirements

- Must “give emphasis to” facilities of national, state, and regional significance
 - Strategic Intermodal System (SIS)
- Must reflect the goals of the Florida Transportation Plan (FTP)
- Must be consistent with local comprehensive plans
- Must reflect coordination among MPOs on facilities crossing MPO boundaries





Key Initiatives

Brian Ruscher, Deputy Director of Multimodal



Vision Zero

A commitment to
**Zero Traffic
Fatalities and
Serious
Injuries.**

Everyone has the right to move safely in their communities, and that system **designers** and **policy makers** share the responsibility to ensure safe systems for travel.



PalmBeachTPA.org/Safety

Vision Zero and Reality



Why Florida?

Florida ranked #2 most dangerous state for pedestrians (previously #1)

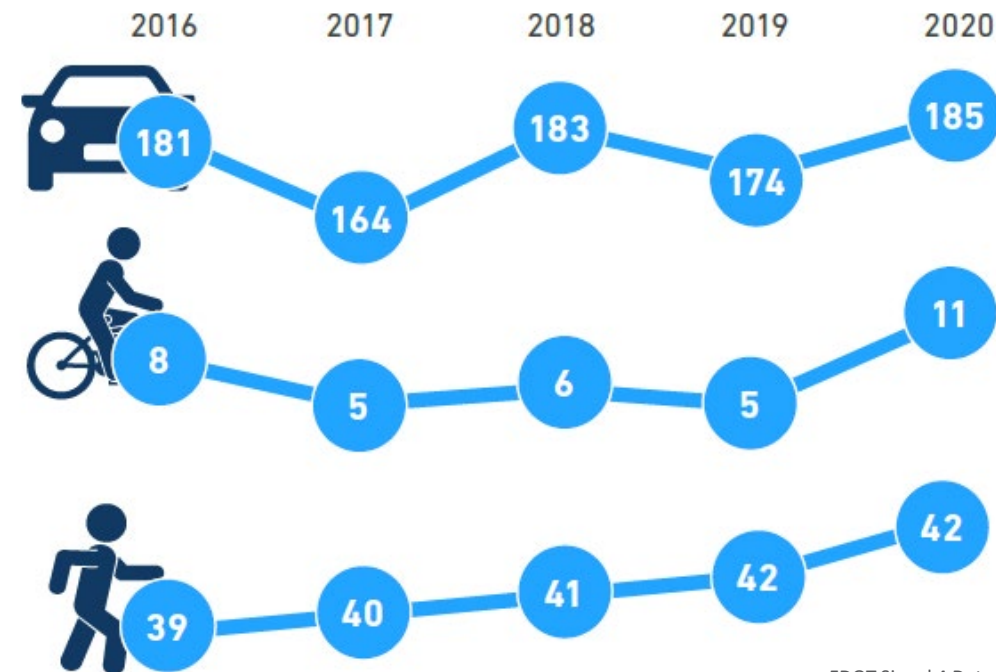
THE TOP 20

Most dangerous metropolitan areas for pedestrians (2016-2020)

● Top 1-10 ● Top 11-20



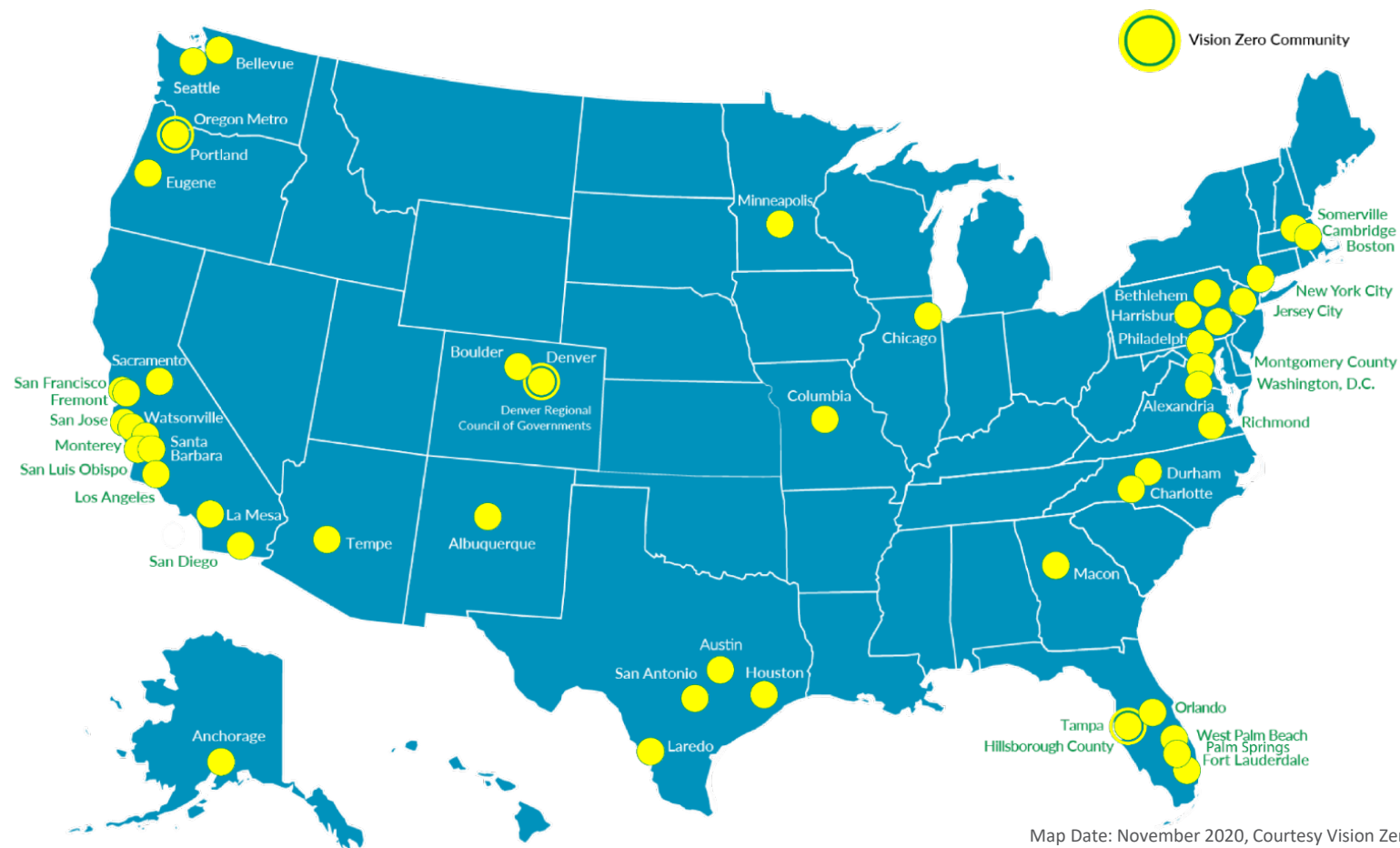
Palm Beach County Fatalities



FDOT Signal 4 Data

Vision Zero Communities

1. Belle Glade
2. Boca Raton
3. Boynton Beach
4. Delray Beach
5. Greenacres
6. Juno Beach
7. Jupiter
8. Lake Worth Beach
9. Palm Springs
10. West Palm Beach
11. Wellington
12. Westlake



Map Date: November 2020, Courtesy Vision Zero Network

Vision Zero Principles



Political
Commitment



Community
Engagement



Equity



Action Plan



Cooperation &
Collaboration



Data driven



Multidisciplinary
Leadership

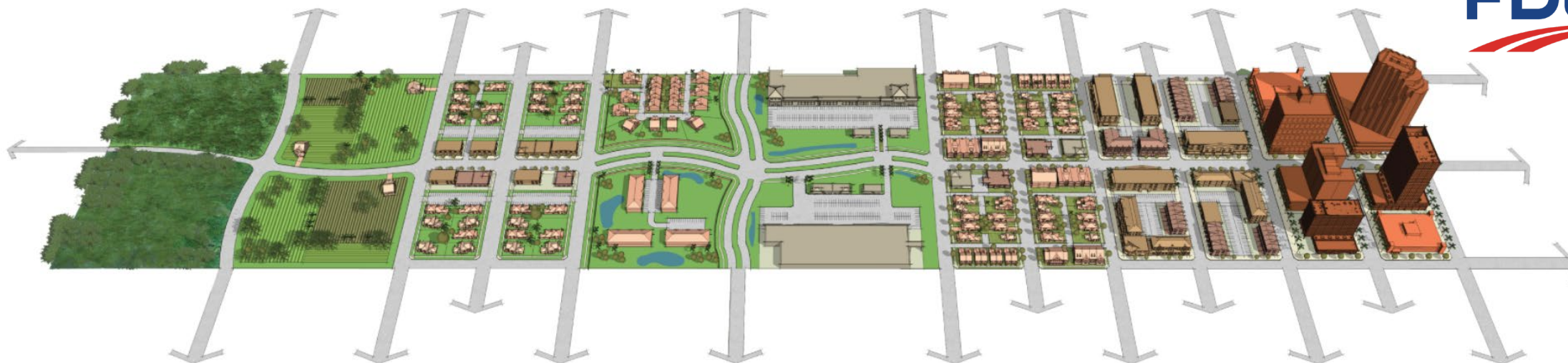


Systems-based
Approach



Transparency

Complete Streets



Complete Streets is a nationally recognized term referring to roadways **designed and operated to enable safe access for all users**, including pedestrians, bicyclists, motorists and transit riders of all ages and abilities

Lake Worth Road resurfacing concept

Raulerson Dr to Congress Ave (west of Lake Worth Beach)



North A1A - Town of Jupiter



Wider
sidewalks

Chicanes

Raised mid-block
crosswalk

Designated
bicycle lanes

Street trees

Benefits of Complete Streets

BENEFITS OF COMPLETE STREETS

People who live in neighborhoods with sidewalks on roads are 47% more likely to be active at least 30 minutes per day.
American Association of Physical Medicine, 2008

Increased physical activity promotes better grades, school attendance, and classroom behavior.
National Center for Children, Youth, and Human Services, 2004

Pedestrian street activity increases support of local businesses, expands employment opportunities, and promotes reinvestment into the local economy.
New York City Department of Transportation, 2013

If 100,000 car trips were replaced by bike trips once a month, it would cut carbon dioxide (CO₂) emissions by 3,764 tons/year.
Smart Growth America, 2013

\$9,700 is the average annual savings from choosing to ride transit instead of driving alone.
American Public Transit Association, 2013

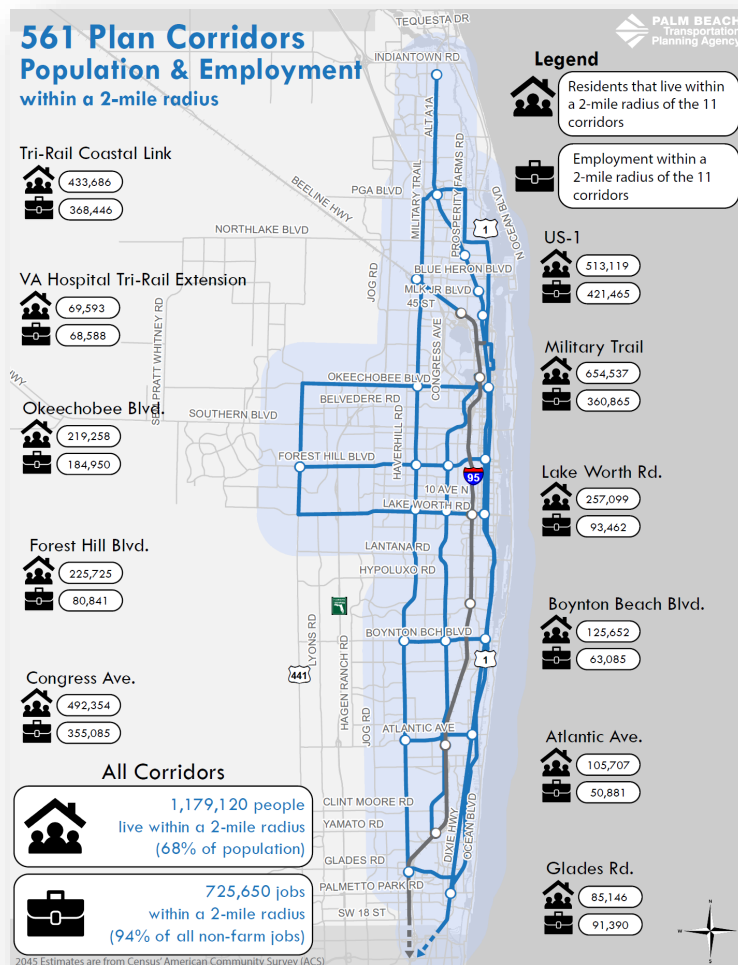
Every \$1 communities invest in transit generates \$5 in economic returns.
American Public Transit Association, 2013

Homes with higher Walk Scores sell for between \$4,000 and \$34,000 more.
Walk Score, 2009

Increased pedestrian street activity acts as self-policing, deterring criminal behavior.
Johns Hopkins, 1991



561 Plan & Mobility Vision



In 2045, these corridors will account for...

94% of all non-farm jobs

And within 2 miles of these corridors...

68% of the population

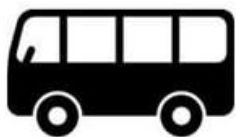
2045 TPA Long Range
Transportation Plan

Palm Tran Transit
Development Plan

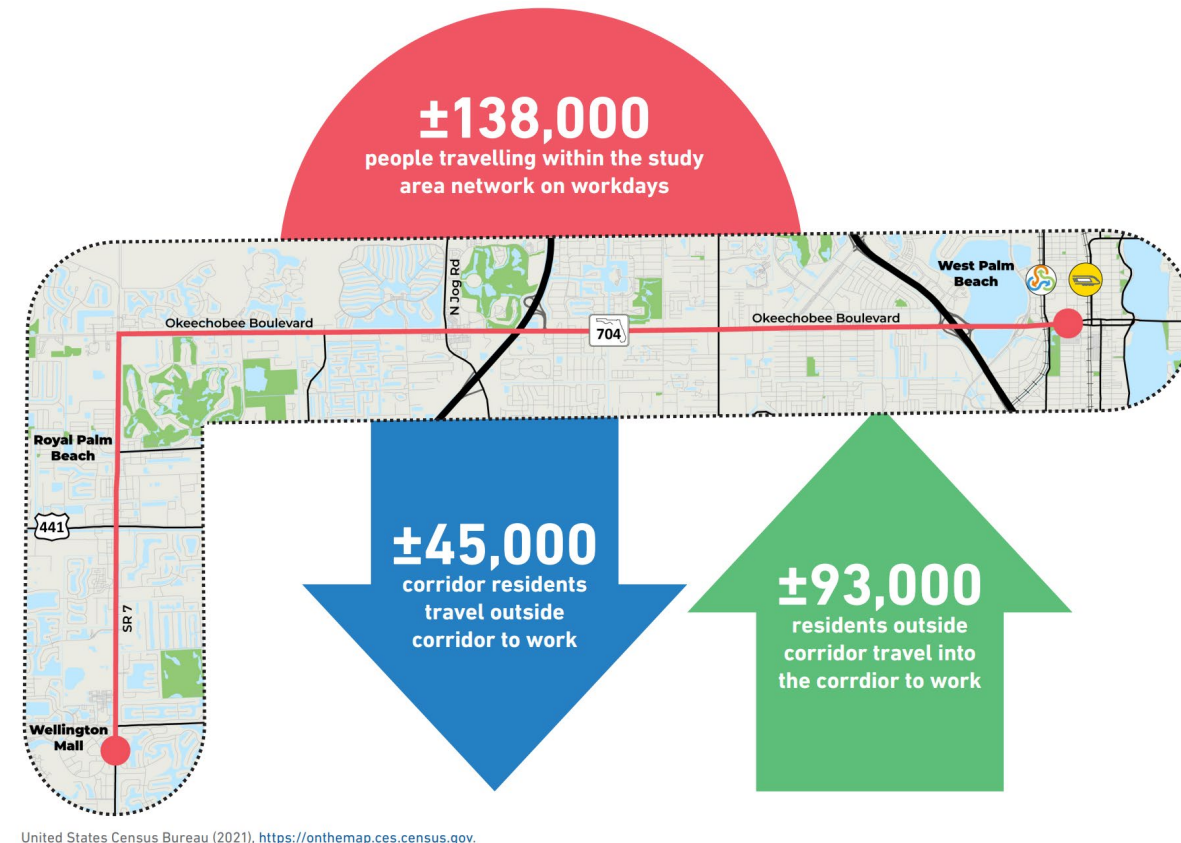
**561 Plan
Corridors**

561 Plan Possibilities

Future Reliability within the Corridor

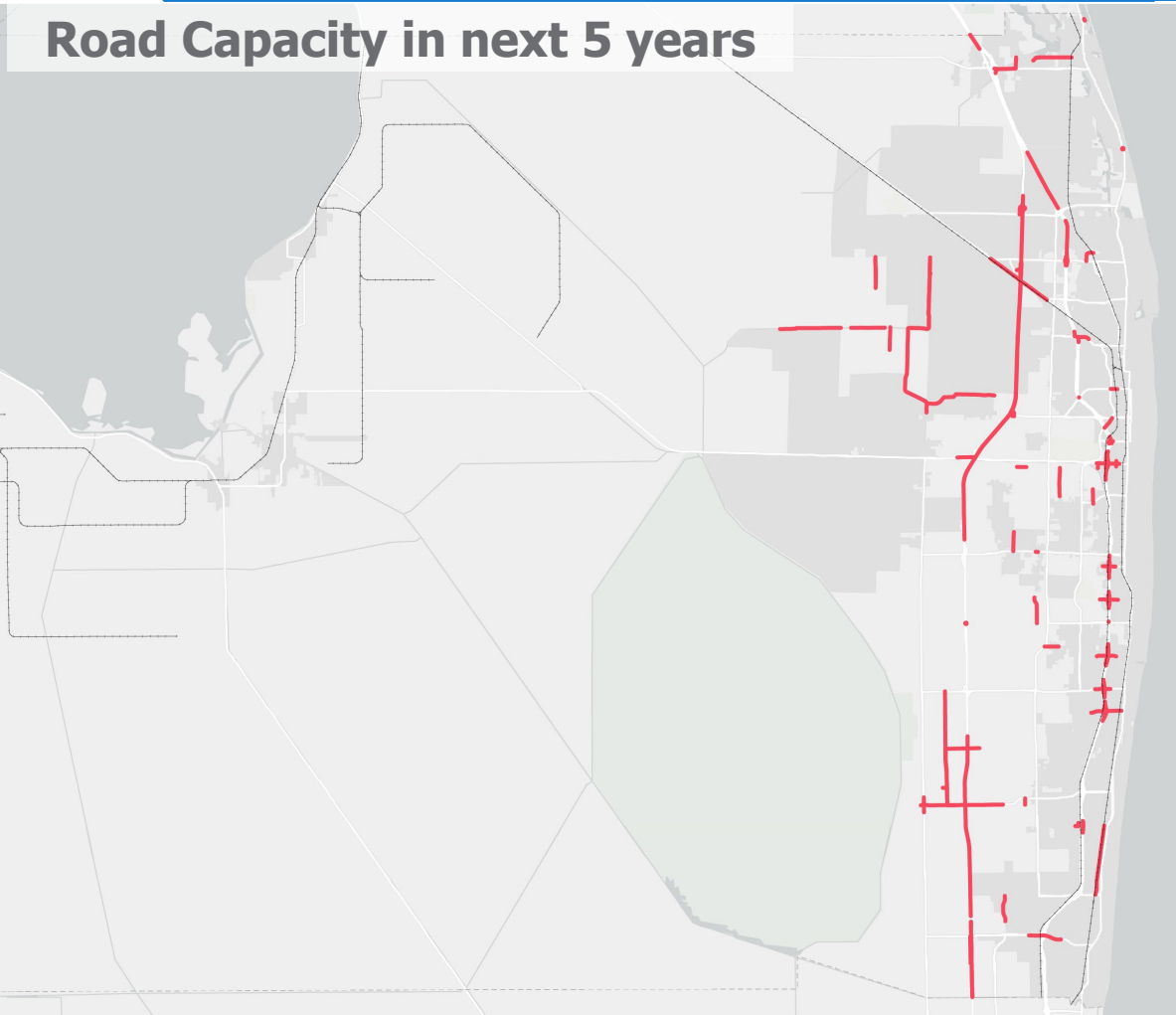


Moving People - Spatial Implications



Today...

Road Capacity in next 5 years



Okeechobee Blvd today

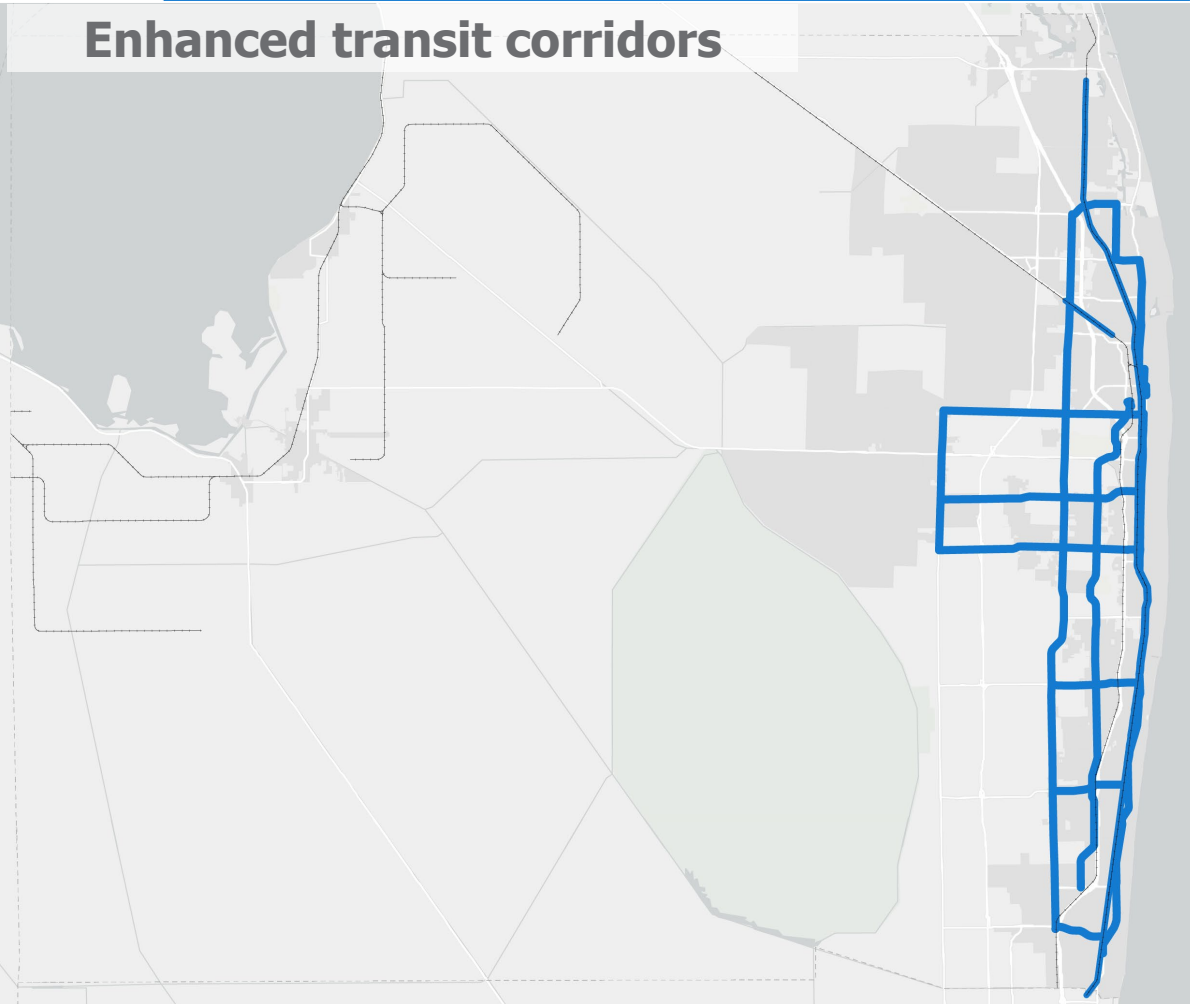


- Built-out roadway network
- Prioritizes vehicle speed
- **\$1.7 Billion** in roadway capacity for next 5 years

- **977 lives** lost in the past 5 years
- Growing congestion

Future...

Enhanced transit corridors



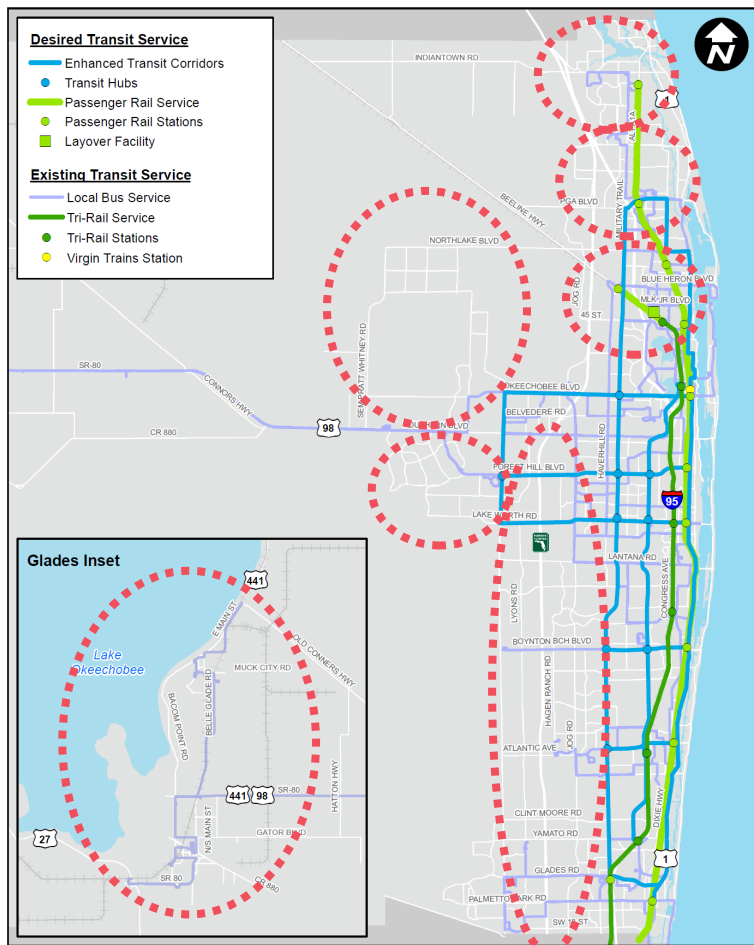
Okeechobee Blvd in 2035? 2050?



- Invest in moving people/goods differently
- Prioritize safety & convenience for everyone

- Transportation & land use connection
- Tradeoffs

A Growing Mobility Vision



TRY TRANSIT FREE!

FREE UBER RIDES HOME

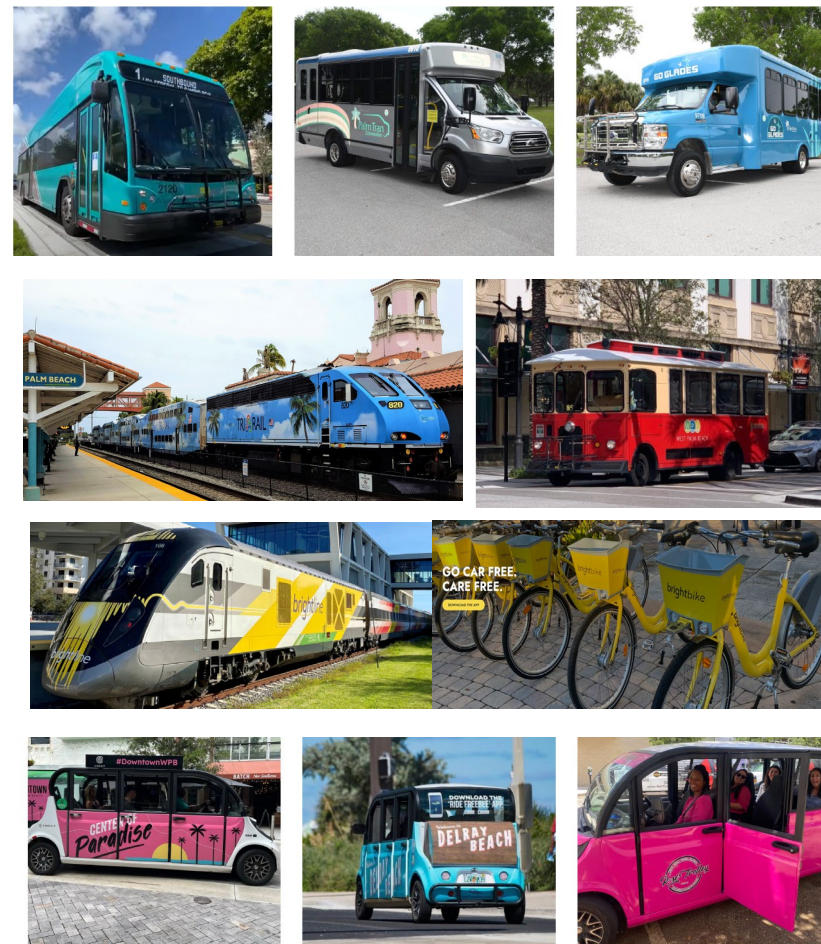
Pay \$0 In Tolls

WORKING from HOME

PARK-AND-RIDES

95 EXPRESS LANES • GUARANTEED RIDE HOME • YOUR OPTIONS • COLLEGES/UNIVERSITIES • FOR EMPLOYERS • SPCS LOGIN • SUBSCRIBE TO NEWSLETTER

1 bus eliminates 40 cars



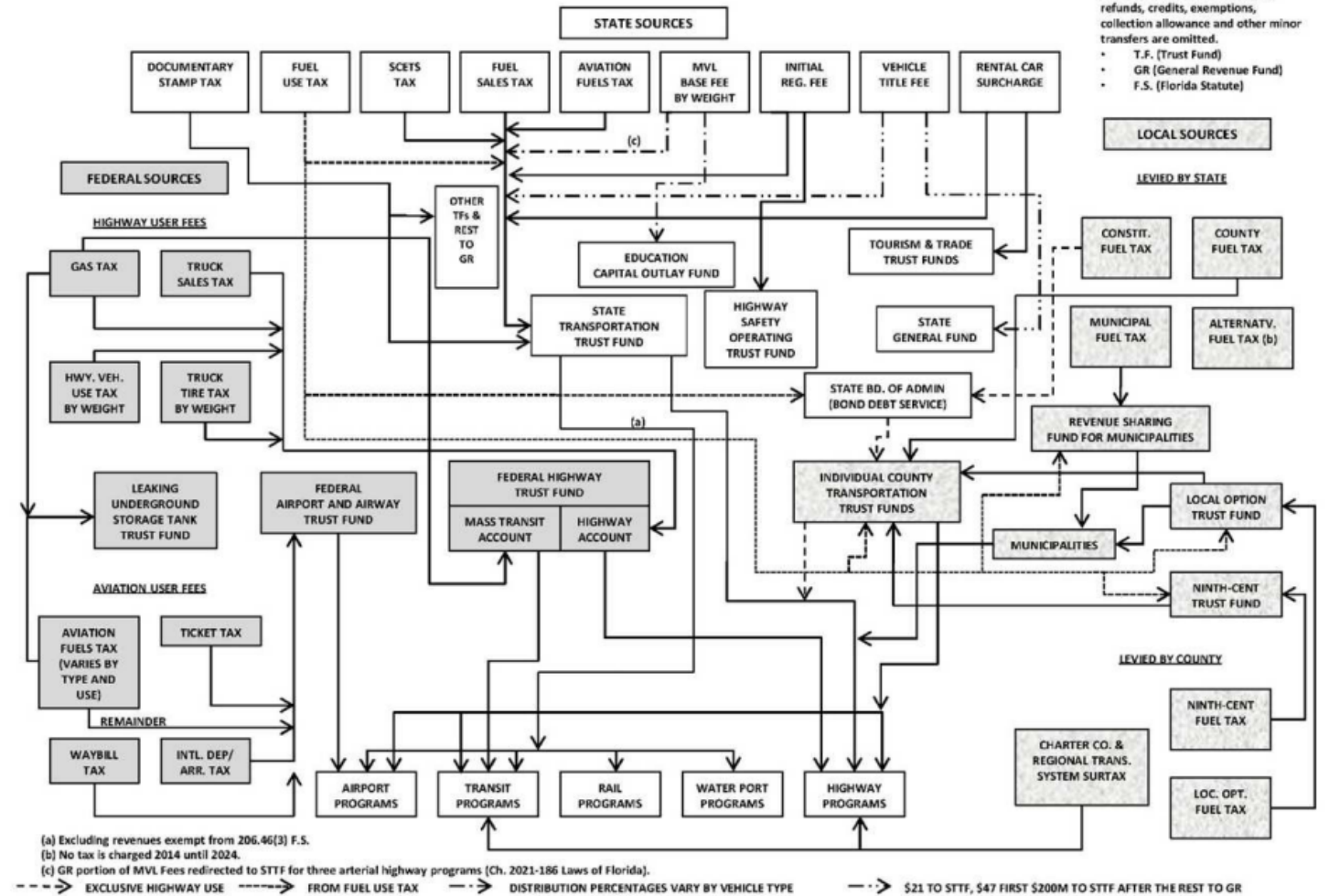


Funding

Andrew Uhler, Deputy Director of Programs

Funding Transportation

TRANSPORTATION TAX SOURCES – PRIMARY DISTRIBUTION AND USE





Funding Sources

Federal

(Federal Highway Trust Fund)

Allocated through
Federal Authorization
Acts

Formula funding &
competitive grants

State

(State Transportation Trust Fund)

Allocated through
legislative direction

Local

Allocated through
capital improvement
plans / transportation
plans



Federal Funding

Fuel tax is main source

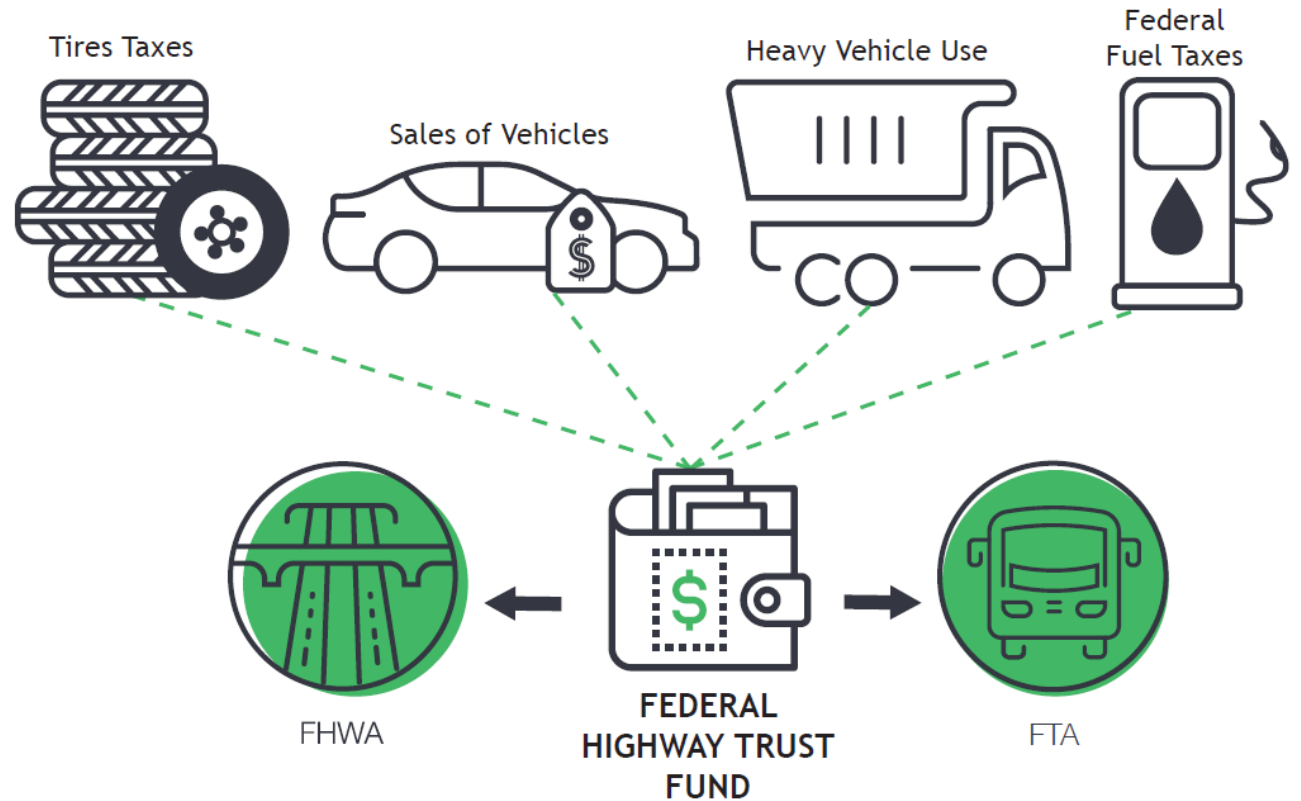
Diverse eligibility:

- federal-aid highways
- public transportation
- intermodal hubs and terminals
- any transportation-related facility

Different formula funding & competitive programs

Typically requires a match

Federalizes the work





State Funding

Fuel tax is main source

Strategic Intermodal System (SIS)

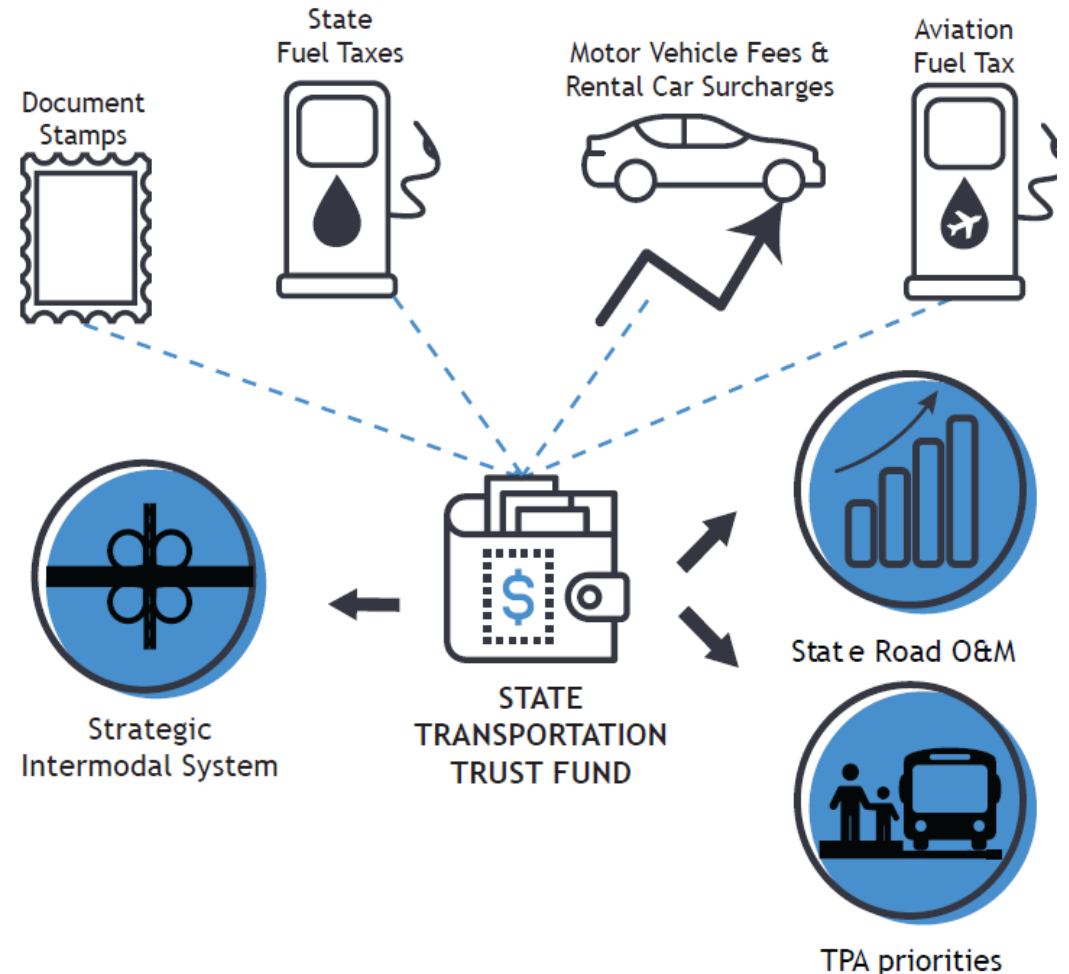
Foster economic development

Improve mobility

Increase intermodal capacity

Ongoing operations and maintenance

Other state roadway facilities (TPA priorities)





Local Funding

Fuel tax is main source

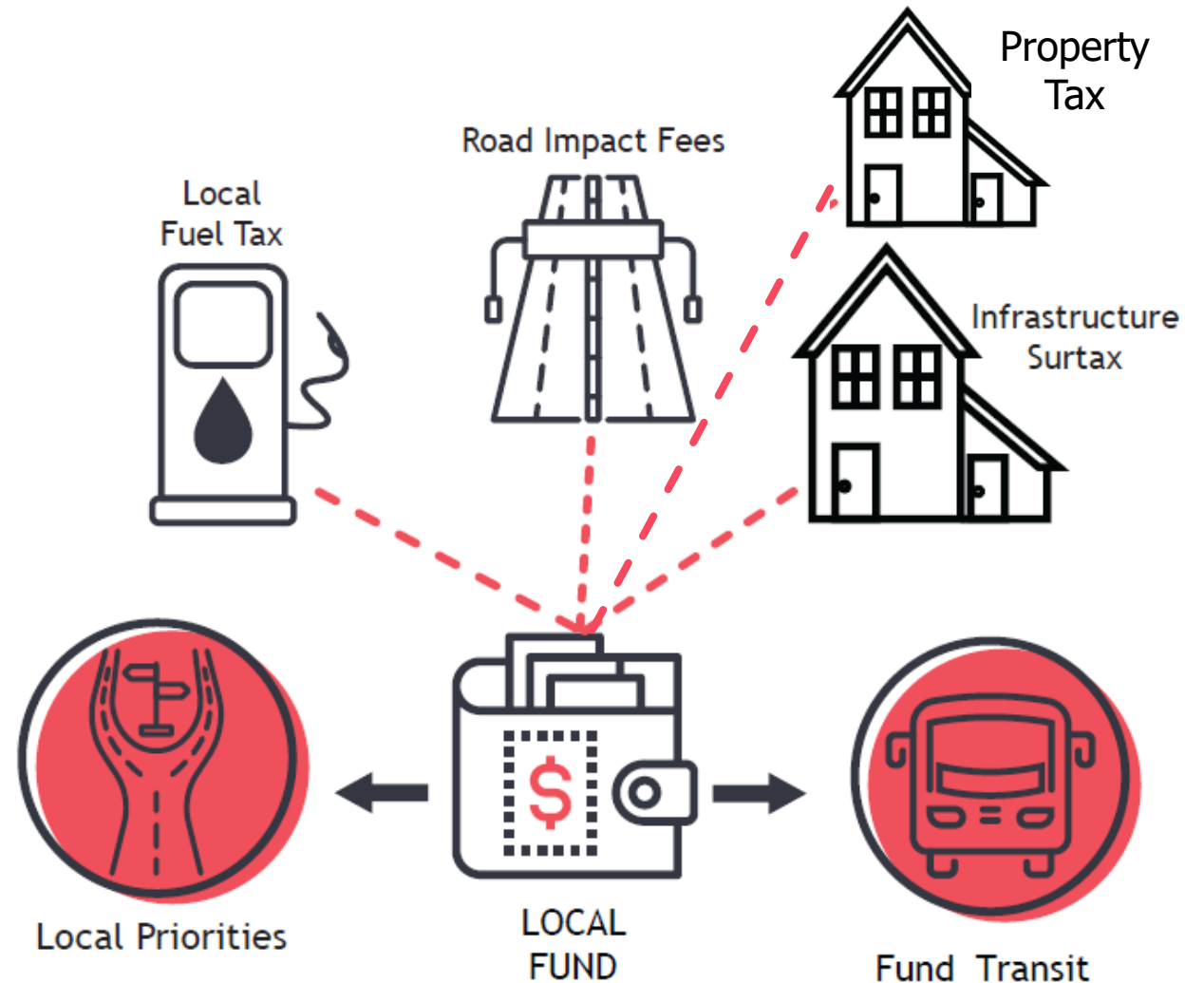
Constitutional and Legislative Motor Fuel Taxes

Local Option Fuel Taxes

Infrastructure Surtax

Local Transportation-related Fees

General Revenue



Future transportation funding

Gas tax becoming a declining source of transportation funding

Potential Options:

- Increase gas taxes

- Mileage-based fees

- Increase registration fees



Agency Operations and UPWP

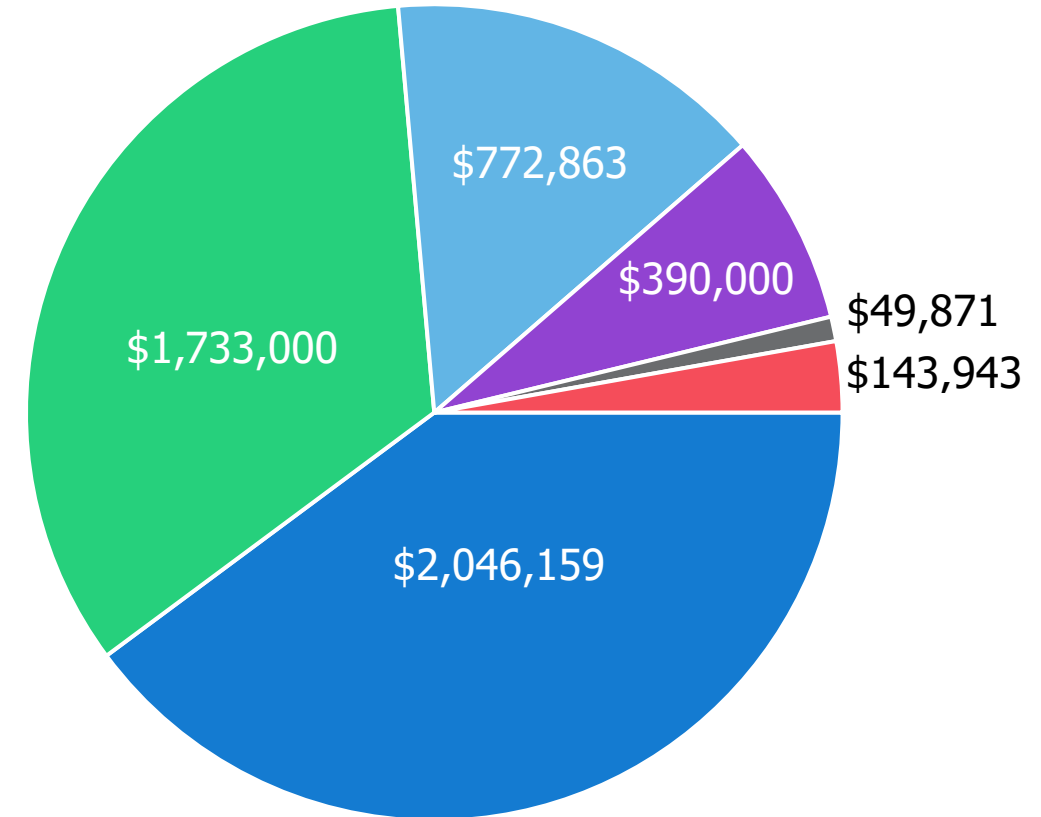
Federal Planning Funds (FHWA and FTA)
Majority of MPOs' planning funds

Requires a 20% local match
(soft match using toll revenue credits)

Florida Commission on Transportation
Disadvantaged (CTD)

Also collect member dues based on population

FY 2023 Revenues \$5,135,836



FHWA-PL FHWA-SU FTA FTA-Prior FY 21 CTD TPA-Member Dues



Public Participation

Melissa Murray, Public Relations Director

Public Participation Plan (PPP)

- Establishes multimedia strategies to show how the TPA plans to engage with the public
- Includes meeting notices, social media, printed materials, outreach activities, etc.
- First task in the UPWP and TPA's Strategic Plan
- Federally required document
- Updated in January 2023, currently under public review until March 16

PUBLIC PARTICIPATION PLAN



DRAFT
2023

301 Datura Street
West Palm Beach, FL 33401
561.725.0800

[PalmBeachTPA.org](https://www.PalmBeachTPA.org)

Social Media

- The TPA manages accounts for Facebook, Instagram, Twitter, LinkedIn and YouTube
- @PalmBeachTPA
- Strategic Plan goals to increase followers and engagement
 - Gained more than 1,700 followers since tracking started in July 2021
 - Increased average monthly impressions to 31,369 per month
- Monthly Public Involvement Activity Reports (PIAR) show SP Goal progress



News Media

- TPA prioritizes relationships with local news media to share information about transportation planning in Palm Beach County
 - 3 local TV stations
 - 2 local newspapers
 - Local radio stations
 - Other local publications
- Informs the community and encourages public participation on a large scale



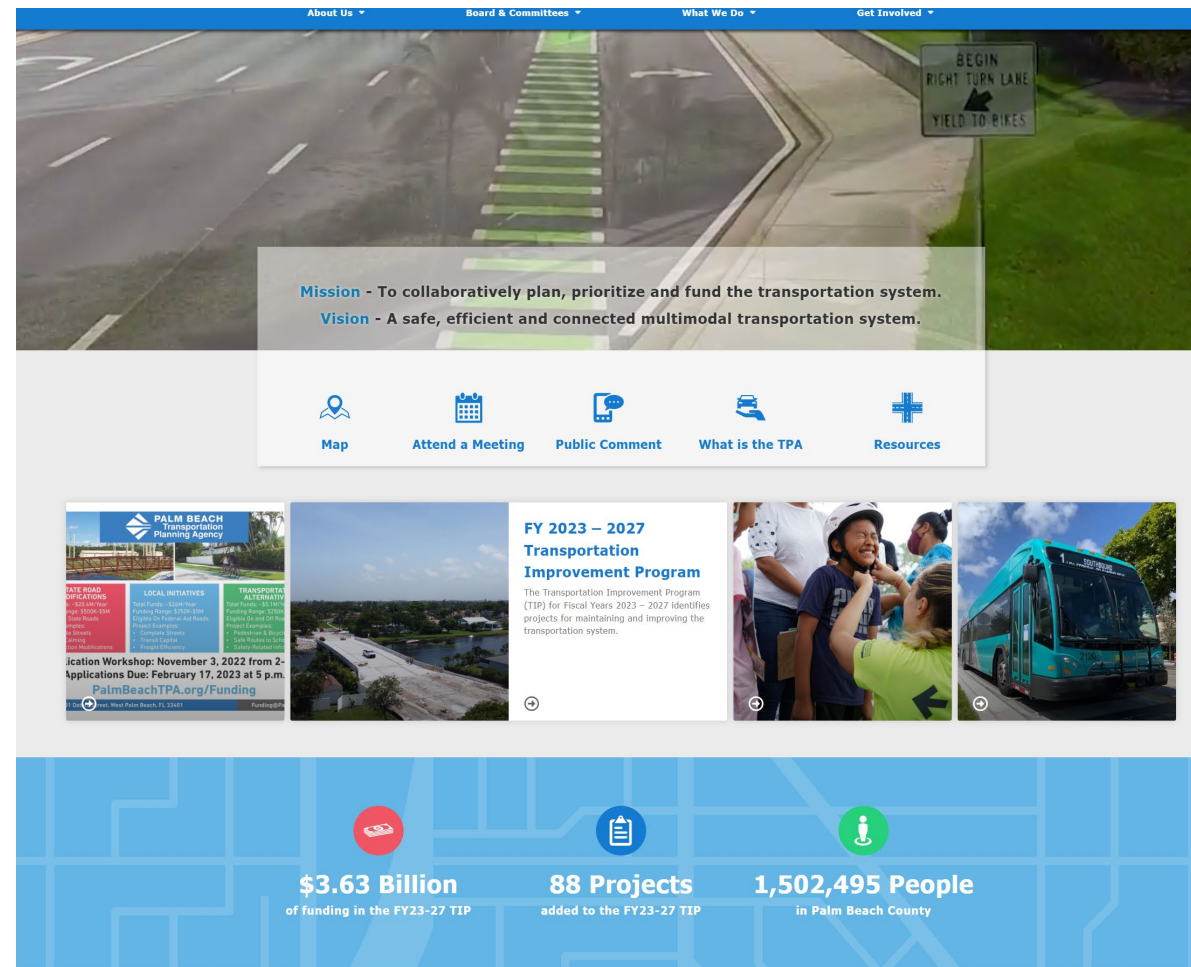
Engagement Activities

- Mobile Tours
- Tabling at TPA and community events
- TPA-led workshops on Vision Zero, bicycling safety, economic development and more
- Social Media and News Media
- Annual Florida Bicycle Month Ride
- Walk and Bike to School Days
- Mobility Week bicycle rides



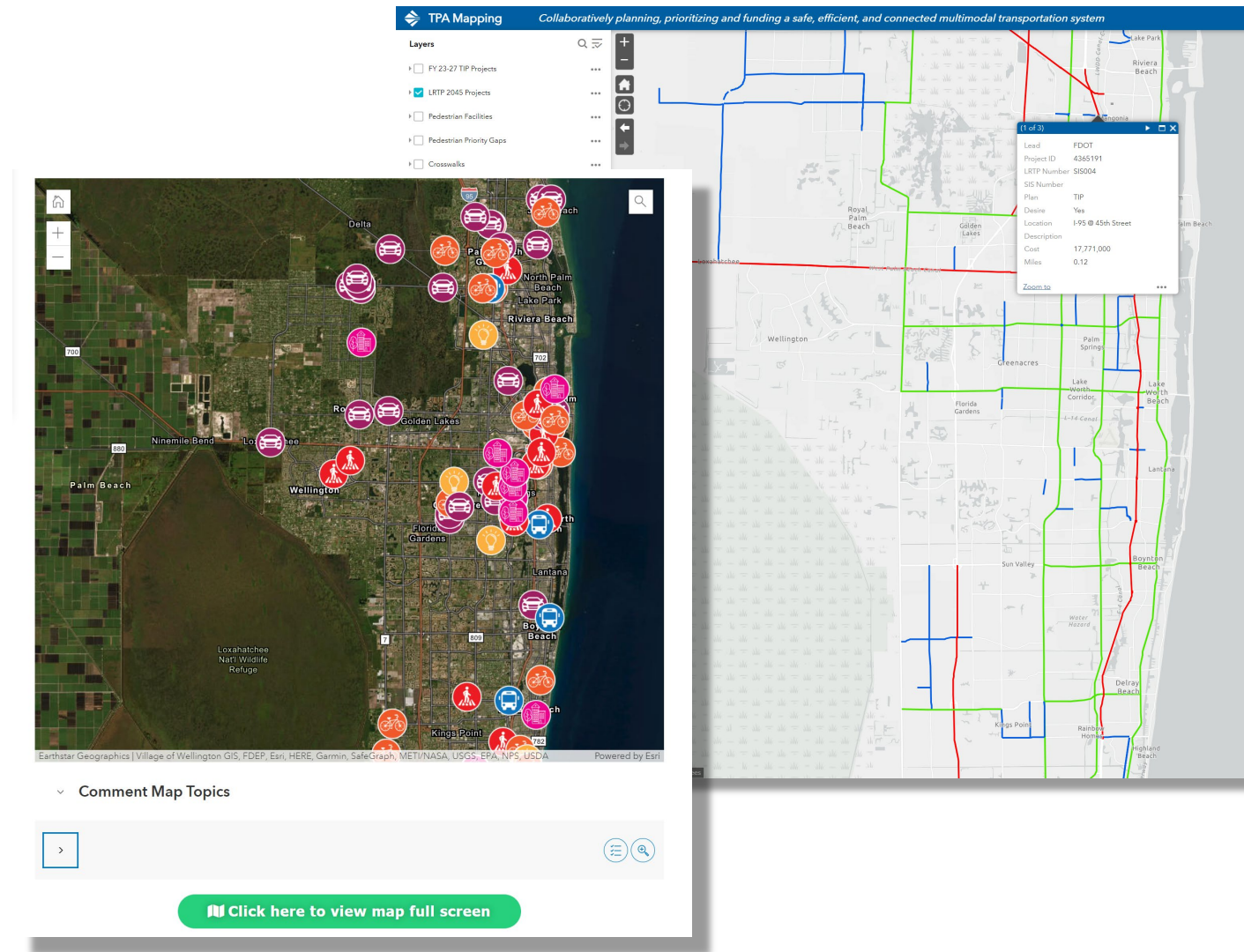
TPA Website

- PalmBeachTPA.org
- Redesigned and launched in December 2022
- Improved ADA compliance to create greater accessibility for all users
- Better user experience – simplified navigation and layout
- Hub for sharing public meetings, upcoming events, resources and more



Resources

- PalmBeachTPA.org/Resources
- Comment map, Performance Measures, Core Products and more
- One stop shop for information to share with constituents, partners and the community
- PR Team creates printed and digital materials to share information about the agency's resources





Regional Coordination

Andrew Uhler, Deputy Director of Programs

THREE COUNTIES, ONE TRAVELING PUBLIC

SEFTC MISSION

TO COORDINATE REGIONAL TRANSPORTATION
GOALS, ACTIVITIES, AND INVESTMENT DECISIONS
THAT SUPPORT THE ECONOMIC HEALTH OF
THE REGION AND QUALITY OF LIFE

SEFTC VISION

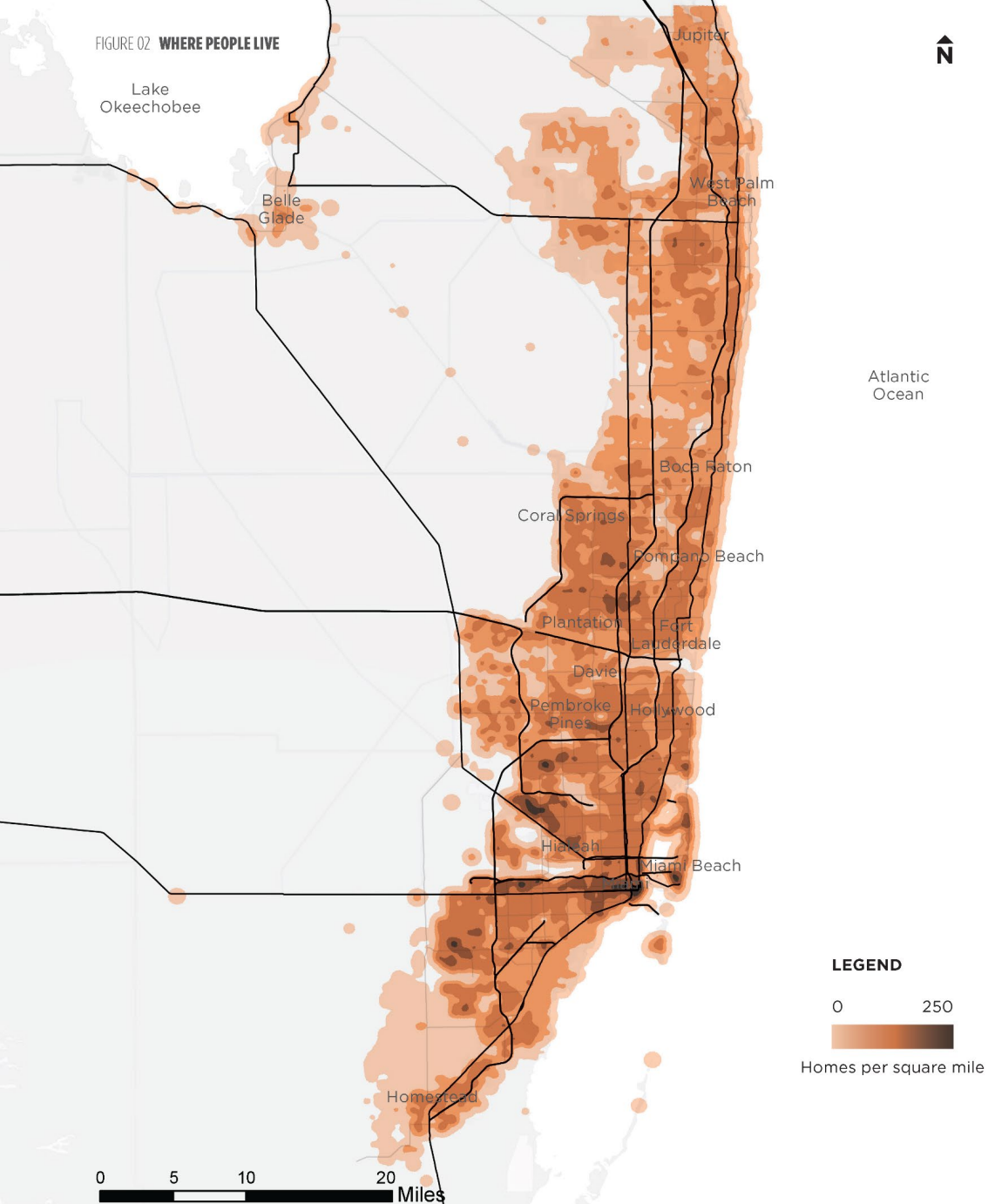
A SEAMLESS, MULTIMODAL TRANSPORTATION
SYSTEM THAT SERVES AND BENEFITS THE REGION

PALM BEACH

BROWARD

MIAMI-DADE

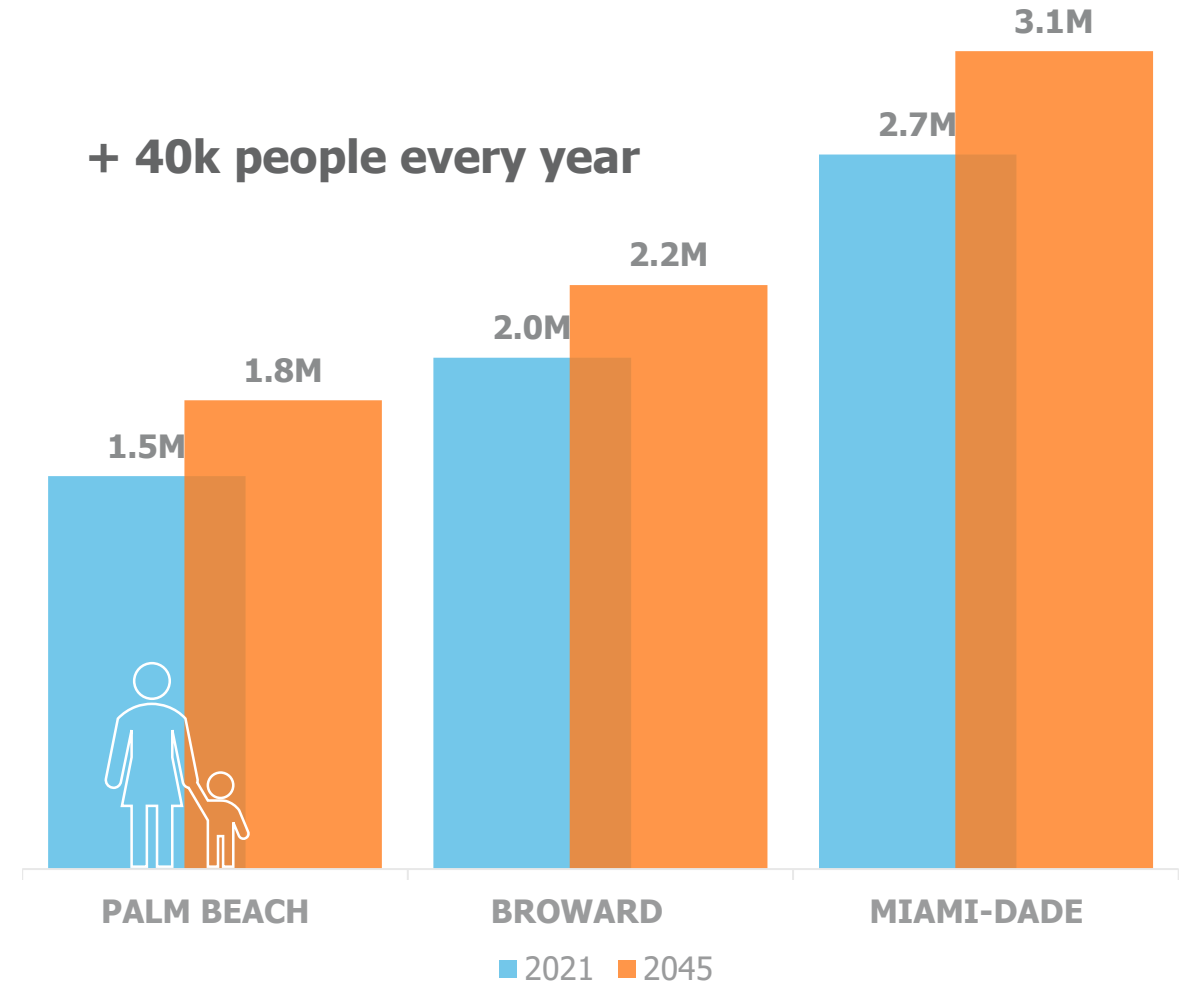




U.S. Census Bureau and Department of Labor's Longitudinal Employer-Household Dynamics (LEHD) 2017 data

Regional Growth

+ 40k people every year

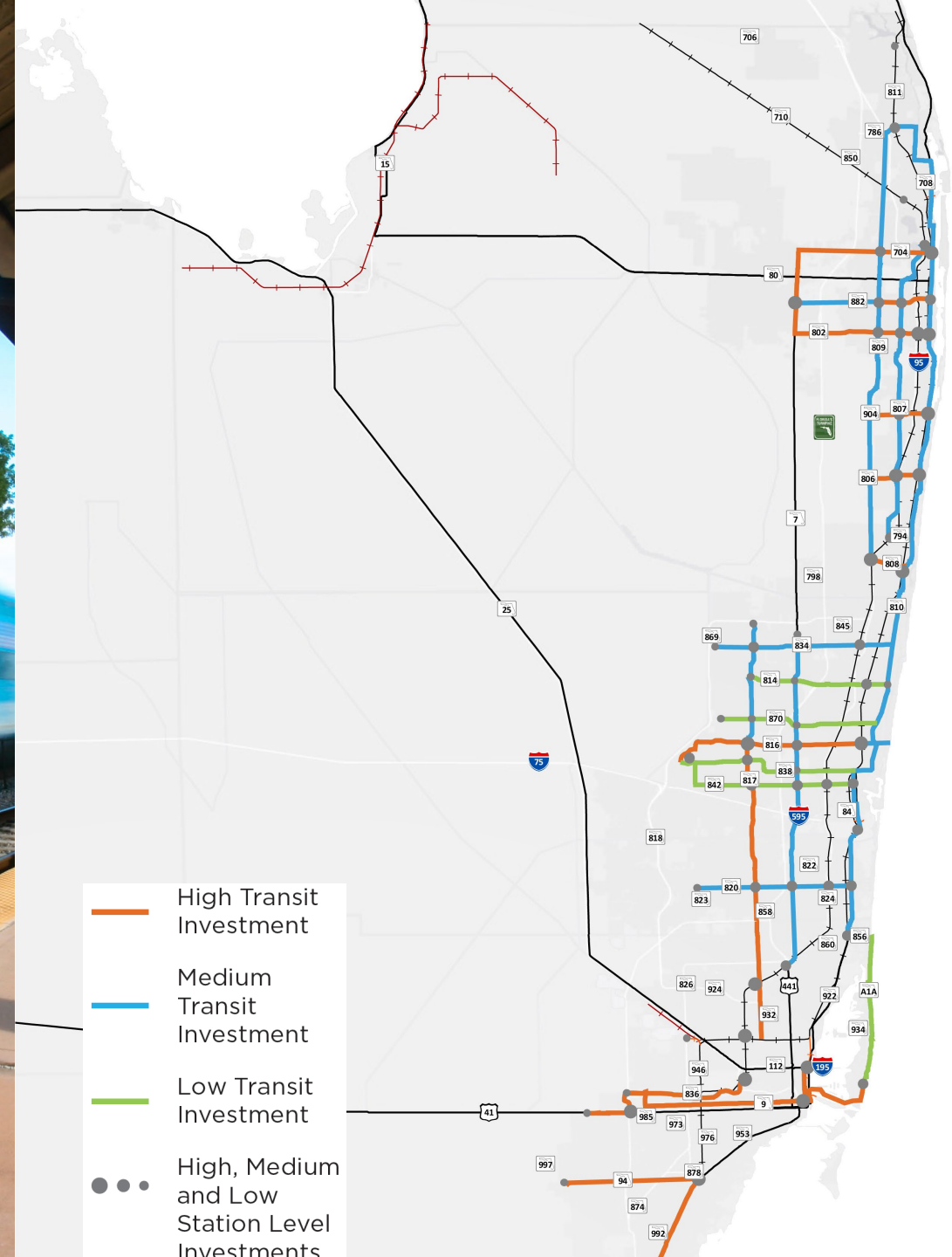


Source: BEBR Medium Growth Projections, 2022 release

One Connected Region

Broward – Vision 2100

Miami-Dade – SMART Plan





Questions?