



# Pedestrian & Bicycle Quarterly Crash Analysis

January 1 – March 31, 2023

# Why Quarterly Reviews of Ped/Bike Crashes?

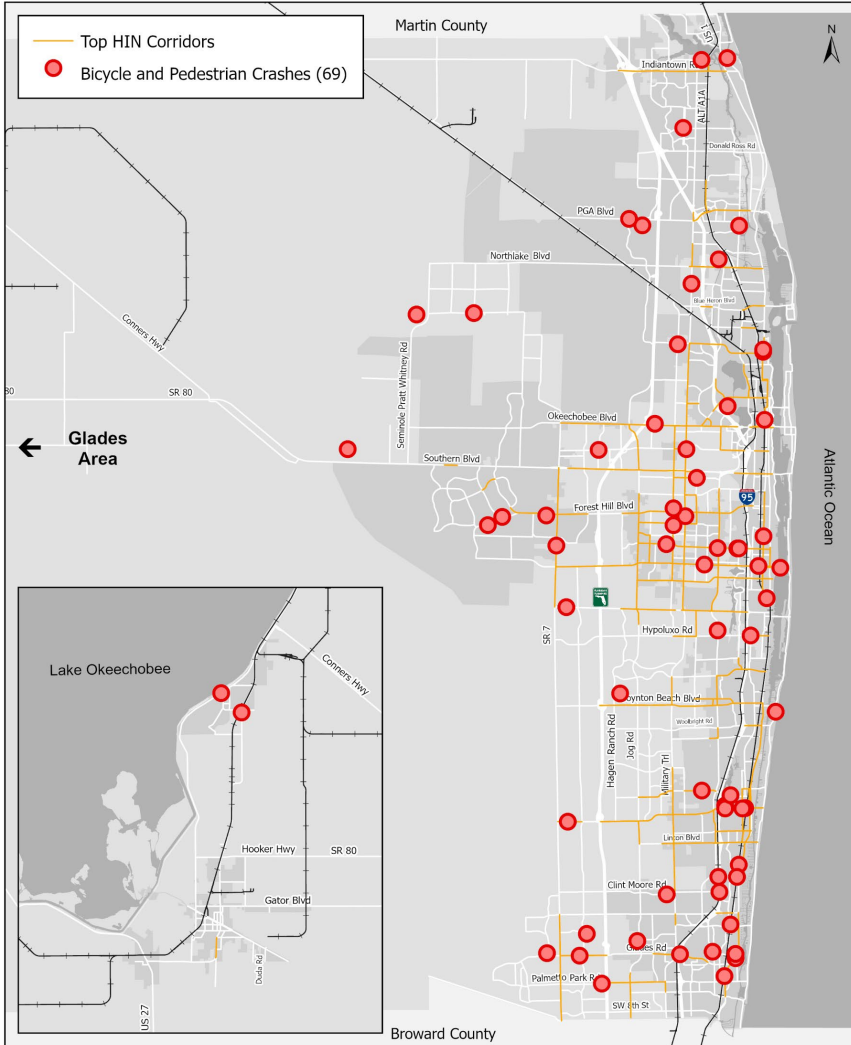
- Implements TPA Vision Zero Action Plan
- Quarterly review promotes discussion and urgency
- Accumulated data reveals trends and countermeasures



# Mapping Crashes



## Crashes on the High Injury Network within Palm Beach County



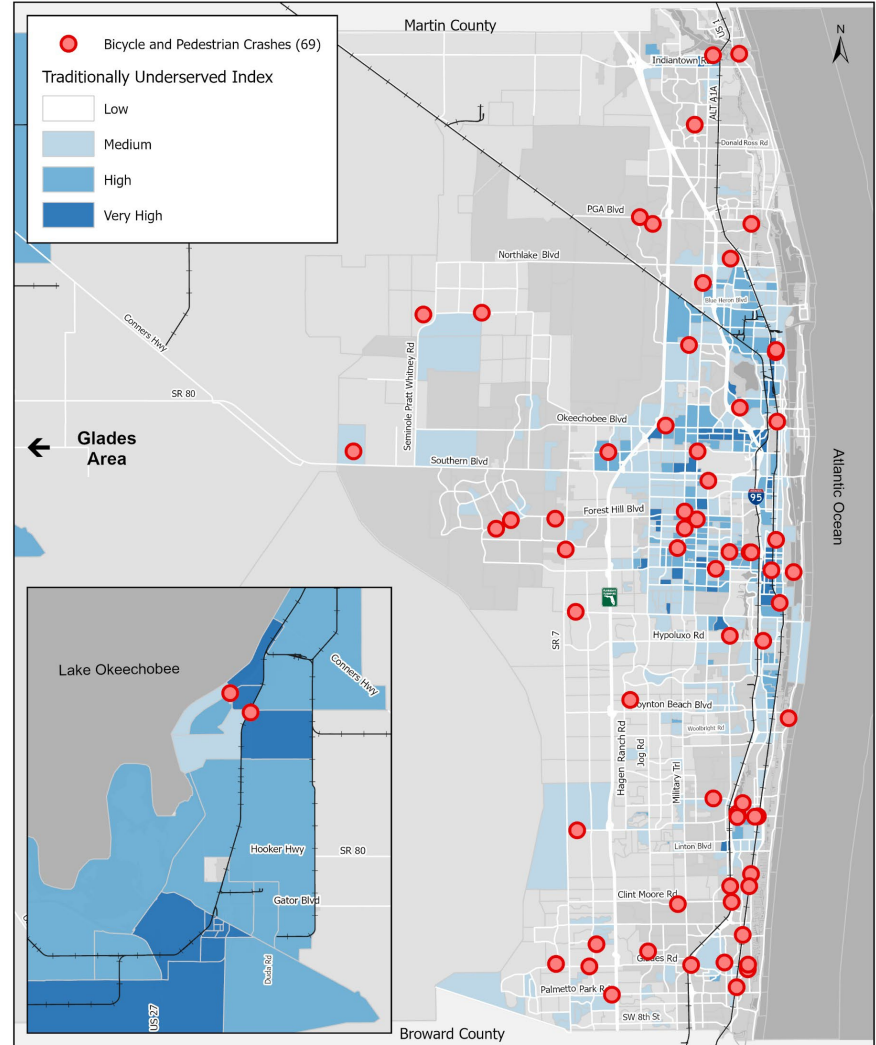
Date: 7/24/2023

Source: Signal Four Analytics

Document Path: C:\TPA\Palm Beach TPA\GIS - Documents\Projects\Safety\Vision Zero\Quarterly Ped Bike Crashes\2023\Q1\Crashes\_on\_the\_HIN.aprx



## Crashes on the Traditionally Underserved Index



Date: 7/24/2023

Source: Signal Four Analytics

Document Path: C:\TPA\Palm Beach TPA\GIS - Documents\Projects\Safety\Vision Zero\Quarterly Ped Bike Crashes\2023\Q1\Crashes\_on\_the\_TUI.aprx

# Crashes by Emphasis Area

## Roadway Conditions

72%

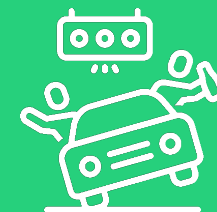
Of **pedestrian** crashes occurred midblock.



## Human Behavior

### Speeding & Aggressive Driving

was the human behavior with most crashes.



## Socioeconomic Conditions

57%

Of the crashes were on roads with posted speed limits of 35 mph or above.



**Aging drivers** continues as the leading age characteristic with most crashes.



# TPA Q1 2023 Reporting

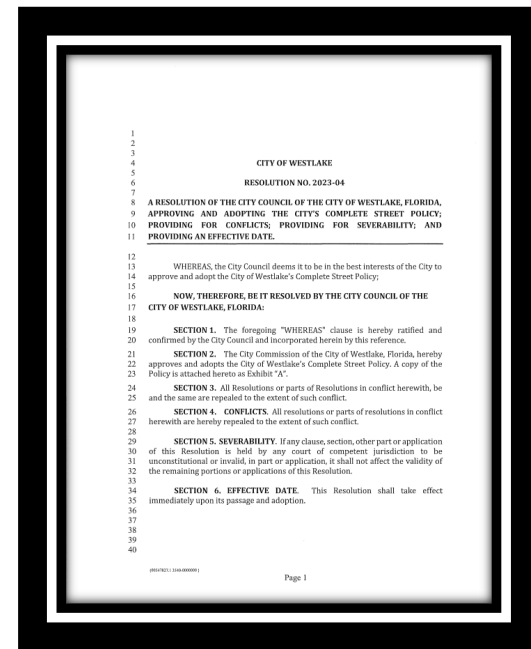
## Helmet Fitting Training



## Complete Streets Workshop



## Florida Bicycle Month Bike Ride





Questions?