



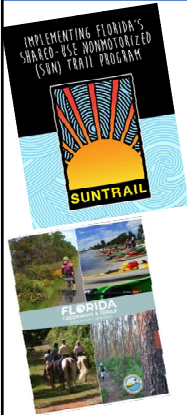
Shared-Use Nonmotorized (SUN) Trail Program

Location: Palm Beach TPA
September 6, 2023

1

1

Shared-Use Nonmotorized (SUN) Trail Program



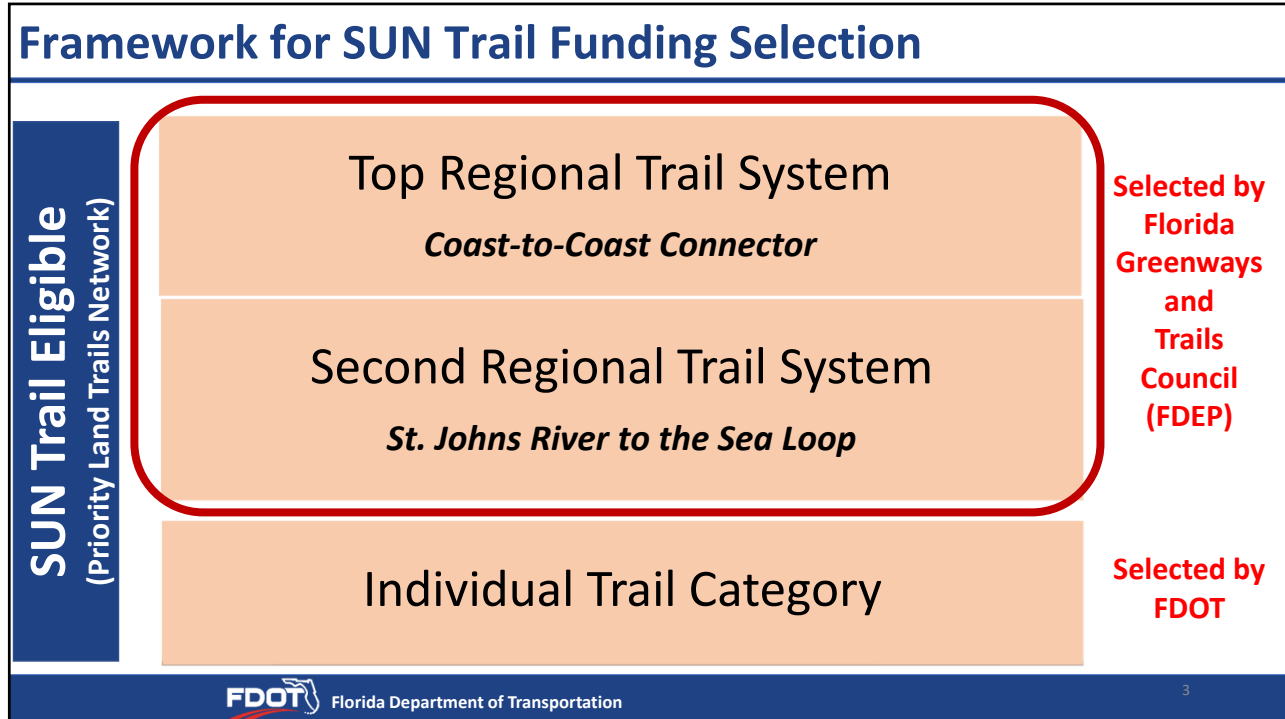
- Created under Section 339.81, Florida Statute
- \$50 million annually funded from the redistribution of new vehicle tag revenues
- To develop a statewide system of paved non-motorized trails for bicyclists and pedestrians (SUN Trail Network) that are a priority established within the Florida Greenways & Trails System, Chapter 260, Florida Statute
- Application cycle: October to December

People are more likely to shift from driving to bicycling if they feel safer and more comfortable in their environment.

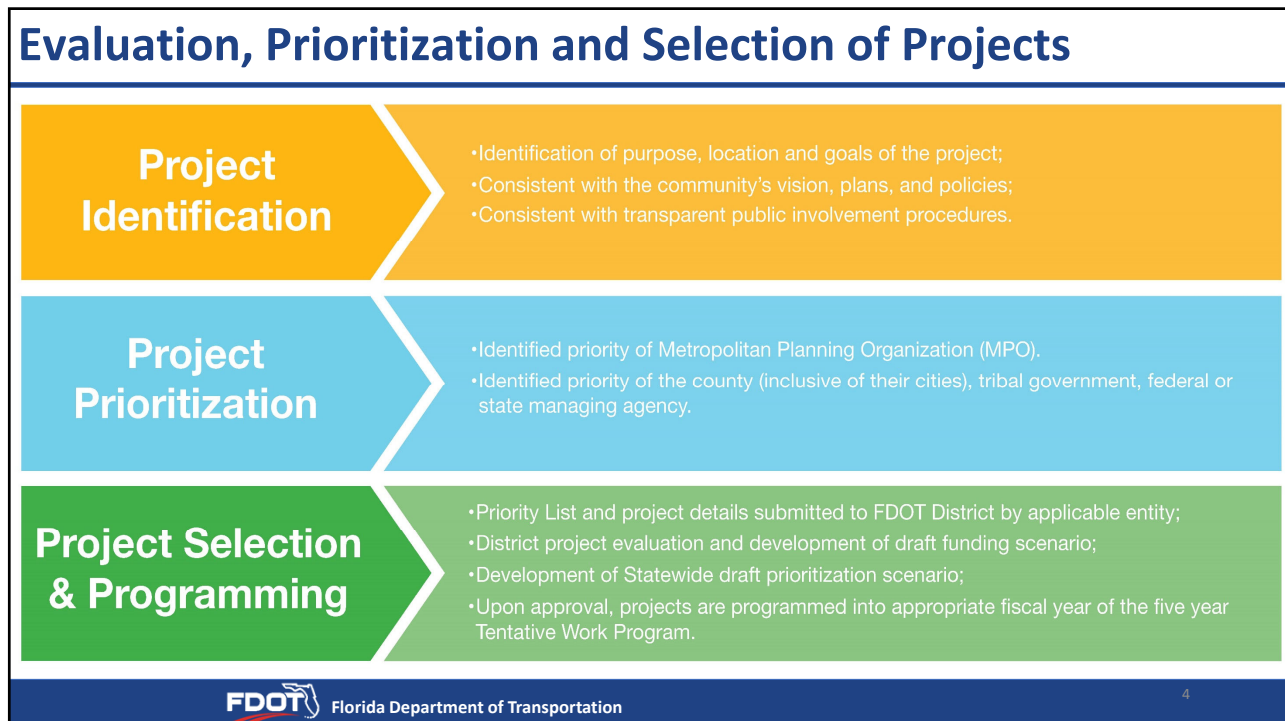
Commuting Trends in Florida, Florida Department of Transportation (2016)

2

2



3



4

Eligibility Criteria

Must receive project information during an open solicitation for SUN Trail funding requests

Required to meet the Eligibility Criteria

1. Documentation that the project will be developed as a **paved multi-use trail within the SUN Trail network**, which is aligned to the FTGS Priority Land Trail Network; at minimum, this will include transmittal of a map of the project limits within the SUN Trail network and applicable "Request for Funding" information.
2. Documentation provided that the project is a **priority of the applicable jurisdiction**; at minimum, this will include transmittal of an adopted prioritization list of projects and the applicable "Request for Funding" information:
 - a) If the project is within a boundary of a Metropolitan/Transportation Planning Organization (MPO), it must be a MPO priority.
 - b) For areas outside of MPO boundaries, the project must be a priority of the county (inclusive of their municipalities), tribal government, federal or state agency.
3. Documentation that a **non-FDOT governmental entity is formally committed to the operation and maintenance of the project** (long-term trail manager), this will include applicable "Request for Funding" information; and
4. Documentation that the project is **consistent with the applicable comprehensive plan(s), transportation plan(s), or the long-term management plan(s)**, this will include applicable project concurrency information.

5

Selection Criteria

Projects with the greatest strengths will advance more quickly...

- Project enhances the safety of bicyclists, pedestrians and motorists
- Project is recognized as having regional, state or national importance
- Additional financial contribution to the project
- Project blends transportation modes by completing, improving or enhancing existing facilities to improve mobility
- Construction readiness, continuation of project phasing, and protecting public investments
- Project has a high level of documented public support
- Project has a significant immediate impact to the quality of life by enhancing economic opportunities and providing connectivity to destinations
- Project enhances or preserves environmental resources
- Project facilitates an interconnected system by closing a gap between existing trails in the SUN Trail network
- Project includes cost-saving elements

6

Strategic, Effective and Efficient Investments

SUN Trail Program funding is for the transportation element

The SUN Trail Program will not fund development of amenities associated with trail projects.

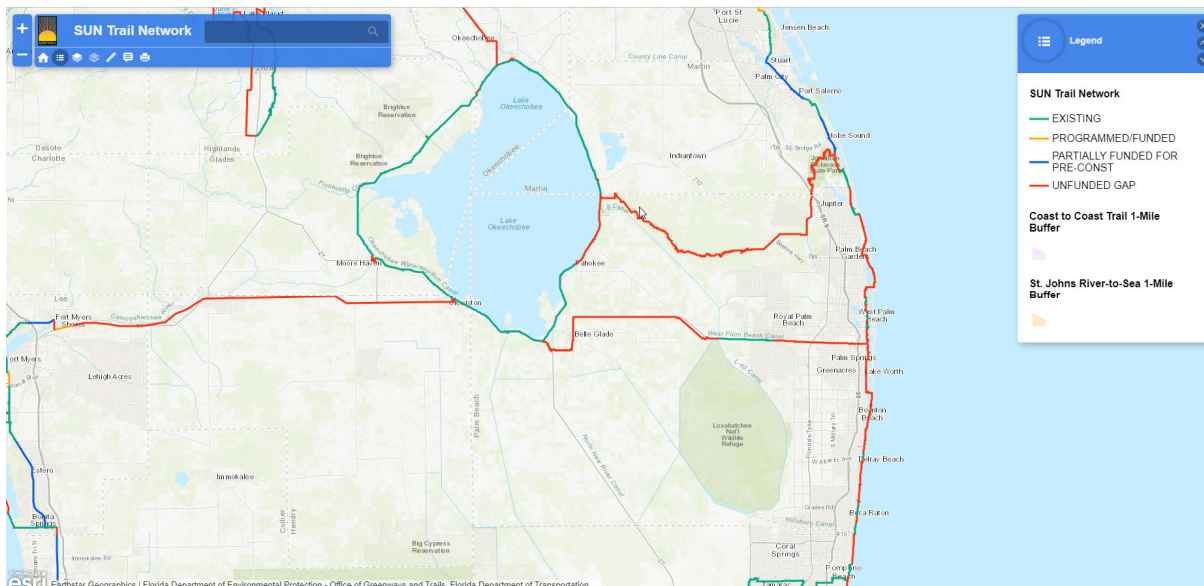
Examples include but are not limited to:

- Benches, trail furniture, seating areas, or tables;
- Bicycle racks or lockers, bicycle air or repair stations;
- Buildings or enclosed structures, restrooms, bathhouses, comfort stations, wayside structures, shade structures, concession stands, overlooks, fishing platforms, transit facilities, shelters, gazebos, or picnic pavilions;
- Kiosks, interpretive panels, or placemaking signs (safety/regulatory controls are an allowable cost);
- Landscaping (trail stabilization is an allowable cost);
- Litter or recycle receptacles, or doggie bag dispensers;
- Parking areas, trailheads, or camping areas;
- Playgrounds, fitness equipment or structures;
- Promotional, marketing, or educational materials;
- Sculptures, monuments, or art; and
- Water fountains, splash zones, spigots, showers, water features, or irrigation equipment.

Focusing SUN Trail program funds to eligible and ready project phases of previous investments and eligible unfunded needs

7

Map of Palm Beach



8

SUN Trail Requests for Funding



- Obtain the “Request for Funding” (Grant Application) PDF and the “Engineers’ Cost Estimate” Excel Spreadsheet for the Shared-Use Nonmotorized (SUN) Trail program from either the
 - SUN Trail website: <https://www.fdot.gov/planning/systems/SUNTrail/guidance.shtm> or from the
 - Grant Application Process (GAP – online system): <https://www.flgap.com/>
- Select the PDF file, download and save it to your computer.
- Select the Excel file, download and save it to your computer.
- Name the files by FDOT District, county, and project name (e.g. D4_Palm Beach_X-Trail).
- After saving the files, complete the project proposal (save entered information)
- Upload complete funding proposal (saved files) through the GAP – online system.
 - For assistance contact GAP System Support: 888-238-9707 or flgap@blackcatsupport.com

9

SUN Trail Requests for Funding:

Florida Department of Transportation Shared-Use Nonmotorized (SUN) Trail Program
Request for Funding

SUNTRAIL

Regional Trail System and Individual Trail projects **must meet all eligibility criteria** to receive funding consideration by the SUN Trail program. “Requests for Funding” without the required information are ineligible and will not receive funding consideration.

PART III – ELIGIBILITY CRITERIA

1. Funding is limited to geographic areas within the SUN Trail network. Will the project be developed as a paved multi-use trail within the SUN Trail network?
 - Yes No
 - a. Provide an aerial location map illustrating the project boundary and project limits.
 - b. Provide a map illustrating the project location within the SUN Trail network.
 - c. Provide the project typical section (this should be a pdf of the typical section schematic depicting existing and proposed features, dimensions, and right-of-way lines).
2. Funding is limited to projects prioritized by the applicable authority. If the project is within a boundary of a Metropolitan Transportation Planning Organization/Agency (MPO), it must be prioritized by the MPO. Projects outside of an MPO boundary must be identified as a priority of the county (in the case of their municipalities), trial government, federal or state agency. Is the project a priority of the applicable authority?
 - Yes No
 - a. Indicate the priority number of the project.
 - b. Provide the prioritization list.
 - c. Complete Part VII (CERTIFICATION OF PROJECT PRIORITIZATION).
3. Has a non-FDOT governmental entity formally committed to operation and maintenance of the project (long term trail manager)?
 - Yes No
 - a. Complete Part VIII (CERTIFICATION OF WILLING MANAGER).
4. Is the project consistent with the applicable comprehensive plan(s), transportation plan(s), or the long-term management plan(s)?
 - Yes No
 - a. Indicate the type of plan(s), applicable page number(s) and date(s) of adoption.
 - b. Provide documentation of applicable project concurrency information (e.g. supporting resolutions), except from comprehensive plan(s), transportation plan(s), unit management plans, etc.)

DO NOT PROCEED TO PART IV IF PROJECT RESULTED IN A “NO” RESPONSE IN PART III.

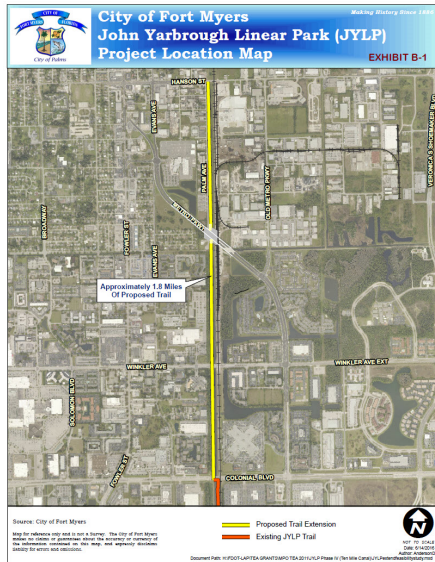
Required to meet the Eligibility Criteria

1. Mapping the project

- a. Aerial Location Map illustrating the project boundary and project termini/project limits (one PDF file)
- b. Vicinity Map illustrating the location of the project within the SUN Trail network (one PDF file)
- c. Typical Section schematic depicting the existing and proposed features, dimensions and right-of-way lines (one PDF file)

10

Example Aerial Map of Project Limits from Previous Year



Includes:

1. Project Name
 - John Yarborough Linear Park
2. Project Limits
 - Hanson Street to Colonial Boulevard
 - City of Fort Myers
3. Ideally map would include scalebar – but it is clearly labeled “not to scale” and includes the total distance (1.8 miles)
4. Ideally the location within the region would be shown – but it clearly shows the connection to the existing trail and the city
5. North arrow

11

SUN Trail Contact:

Wibet Hay
 SUN Trail District Coordinator
 954-777-4573
 Wibet.Hay@dot.state.fl.us



www.FloridaSunTrail.com

12