



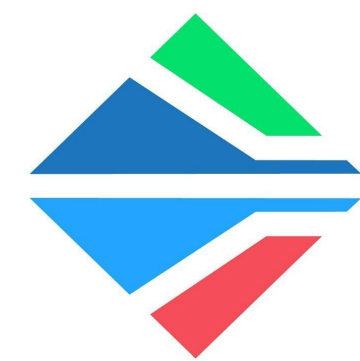
PALM BEACH  
*Gardens*



City of Palm Beach Gardens  
Mayor Chelsea Reed

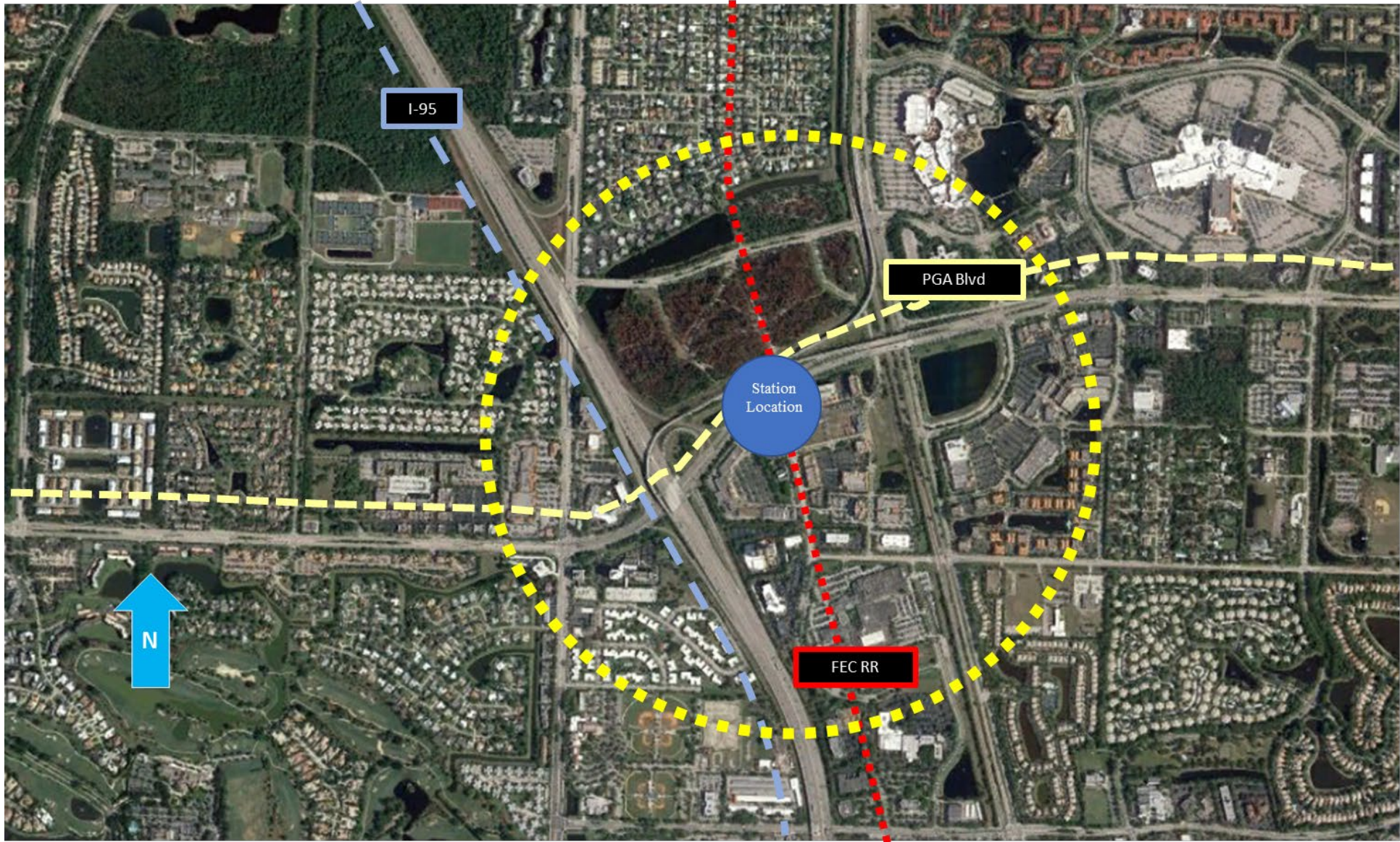






# Artistic Bus Shelters





**Transit Oriented  
Development District**

1/2 mile radius



# PGA Station



# Florida Power & Light







CATALFUMO

4001

GARDENS  
PHARMACY

4270

Way Center Dr

STOP  
ALL WAY

7

REPAIR

# Downtown Palm Beach Gardens







# REACHING NEW HEIGHTS

CMX

OFFICE

RETAIL

RETAIL



**TRAILHEAD**  
• 0.5 mile round-trip trail  
• 1.0 mile round-trip trail  
• 2.0 mile round-trip trail  
• 3.0 mile round-trip trail

**HIMING TRAIL  
CONSERVATION  
AREA RULES**  
• No off-trail driving  
• No off-trail parking  
• No off-trail camping  
• No off-trail hunting  
• No off-trail fishing  
• No off-trail collecting

**RESTORING HABITAT DIVERSITY**  
The University of Georgia's Center for Environmental and Estuarine Science (CEES) is working with the Georgia Department of Natural Resources (DNR) to restore the diversity of the Hime Trail Conservation Area. The project involves the removal of invasive species and the planting of native plants and trees. This will help to restore the natural habitat and improve the quality of the environment for all.

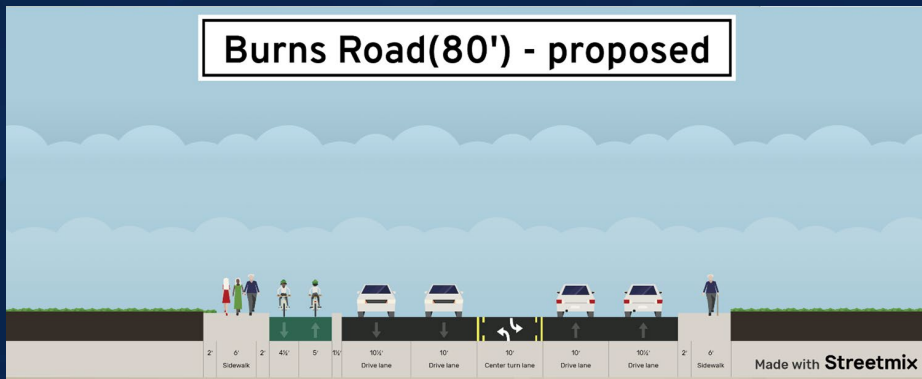
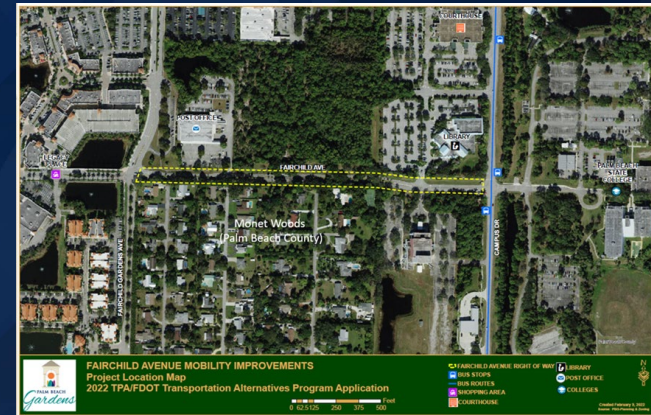
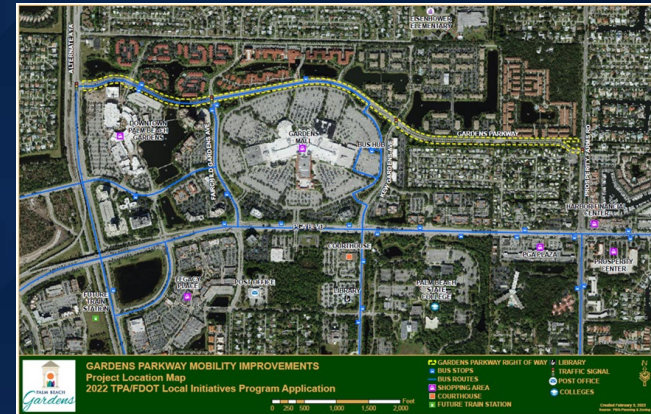
**CONSERVATION  
AREA**  
• 1.0 mile round-trip trail  
• 2.0 mile round-trip trail  
• 3.0 mile round-trip trail  
• 4.0 mile round-trip trail

# Workforce Housing

Project	Total Units	WFH Units (10%)	Status
Solera	136	14	Open
PGA Station	396	40	Under Construction
Mira Flores	363	36	Under Review
PGA Station Ph. II (Gardens Station)	625	63	Under Review
TOTAL	1520	153	

# TPA GRANTS

- Pedestrian Crosswalks (Holly Drive, etc.)
- Fairchild Avenue
- Gardens Parkway





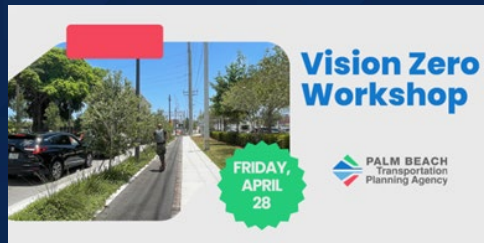
# Transportation Toolbox

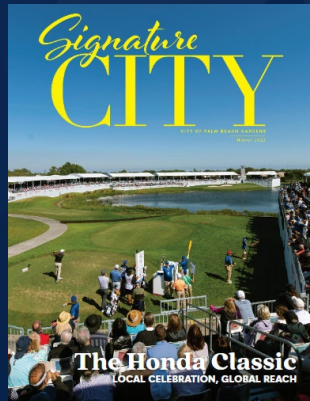
## Partners:

- TPA
- Treasure Coast Regional Planning Council
- FDOT
- County
- SFRTA
- Brightline

## Policy

- Vision Zero
- Complete Streets





PALM BEACH  
*Gardens*