

We provide access to opportunity for everyone; safely, efficiently and courteously



Palm Tran Service Recommendations

TD Local Coordinating

Board Meeting - November 15, 2023



Respect



Integrity



Teamwork



Recognition



Communication



Safety



Service Recommendations & Funding

Modes of Service



Fixed-Route



Paratransit



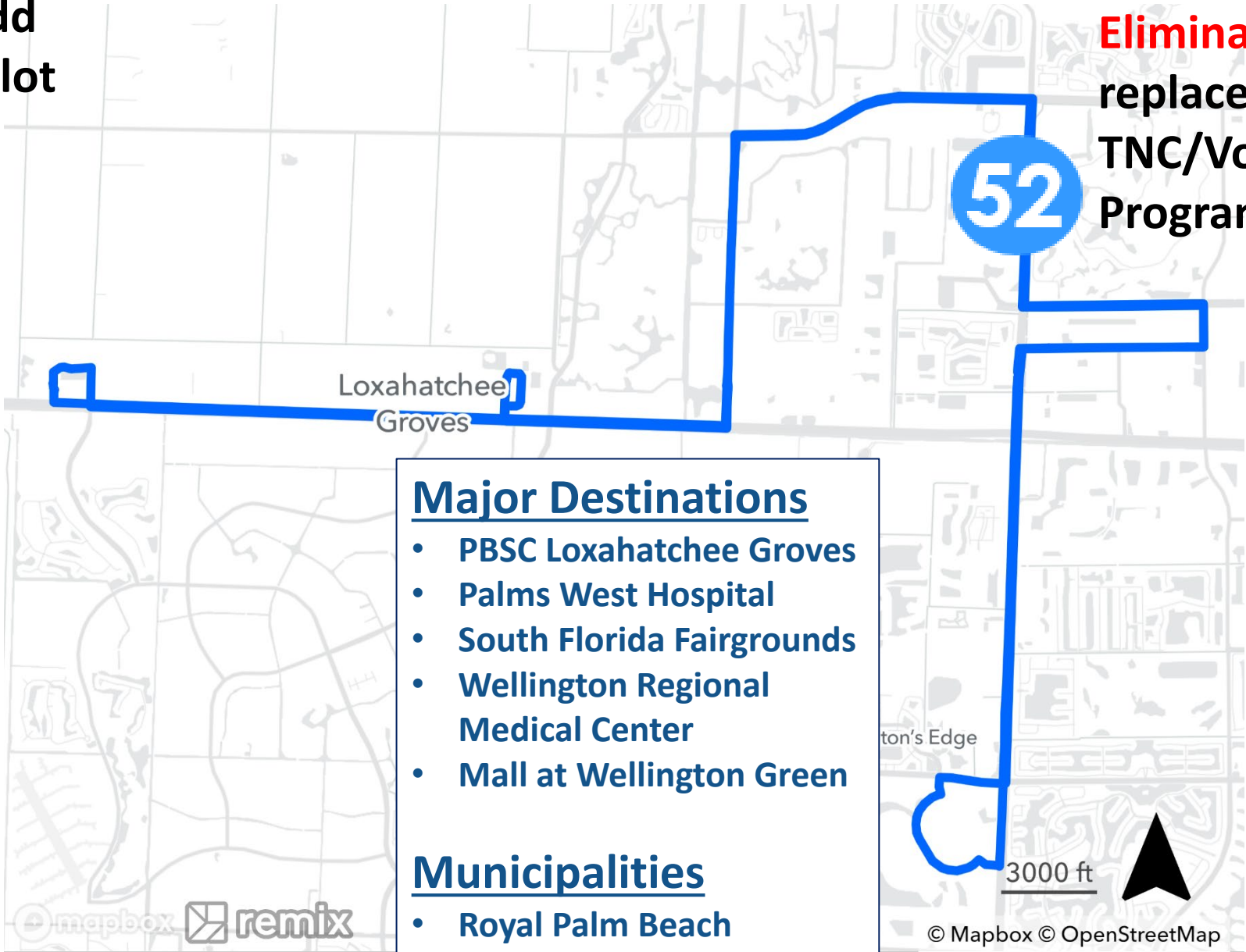
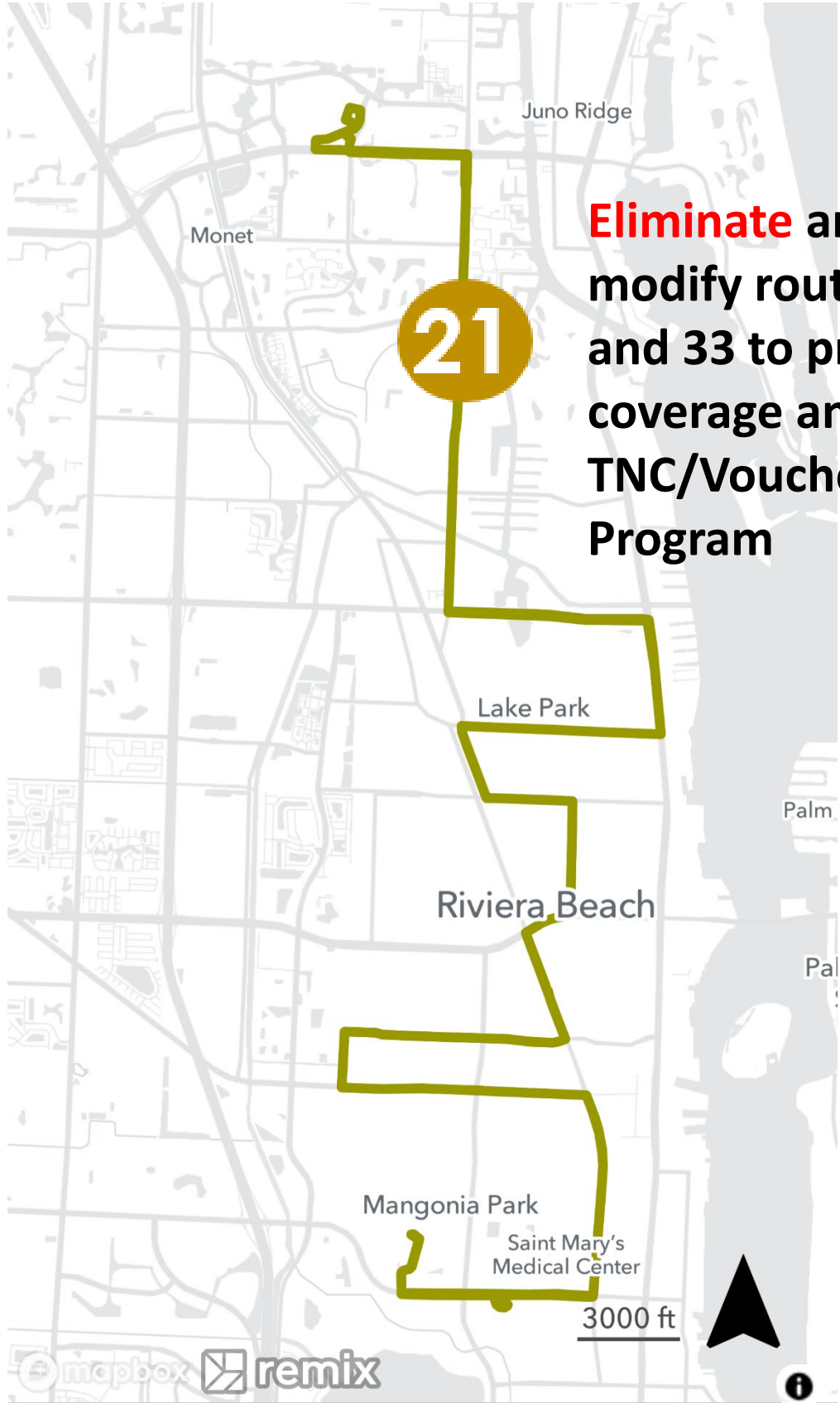
Mobility -On-Demand



Fixed Route Service Efficiencies

Routes with other service cuts: 20 47 64 70 92

- Major Destinations**
- Gardens Mall
 - PBSC Palm Beach Gardens
 - Lake Park
 - Azure Estates
 - St. Mary's Medical Center
 - PBC Public Health Dept.
 - Mangonia Park Tri-Rail Station
- Municipalities**
- Palm Beach Gardens
 - North Palm Beach
 - Lake Park
 - Riviera Beach
 - Mangonia Park



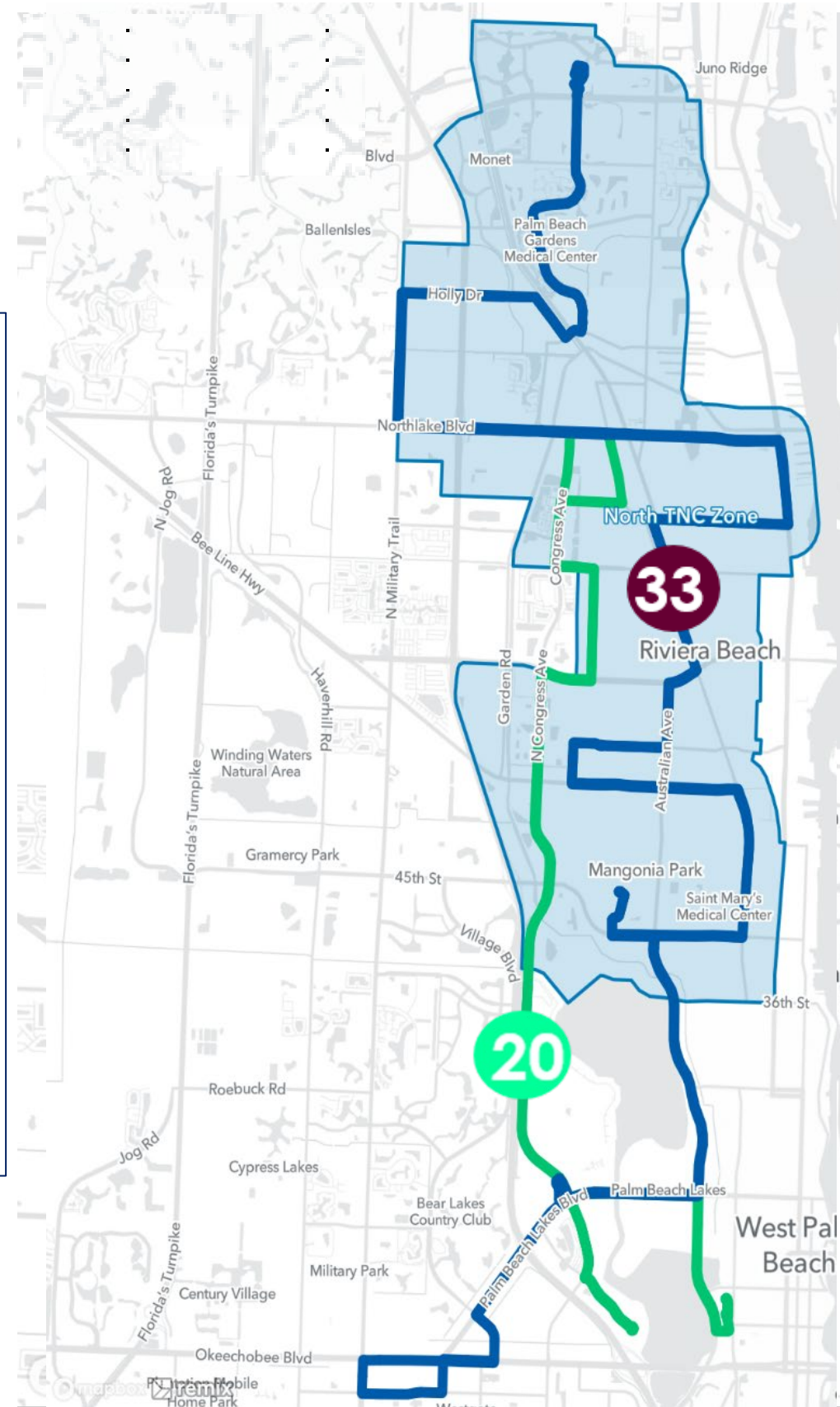
- Major Destinations**
- PBSC Loxahatchee Groves
 - Palms West Hospital
 - South Florida Fairgrounds
 - Wellington Regional Medical Center
 - Mall at Wellington Green
- Municipalities**
- Royal Palm Beach
 - Wellington



Fixed Route Service Efficiencies

- Major Destinations**
- Gardens Mall
 - PBSC Palm Beach Gardens
 - Lake Park
 - Azure Estates
 - St. Mary's Medical Center
 - PBC Public Health Dept.
 - Mangonia Park Tri-Rail Station

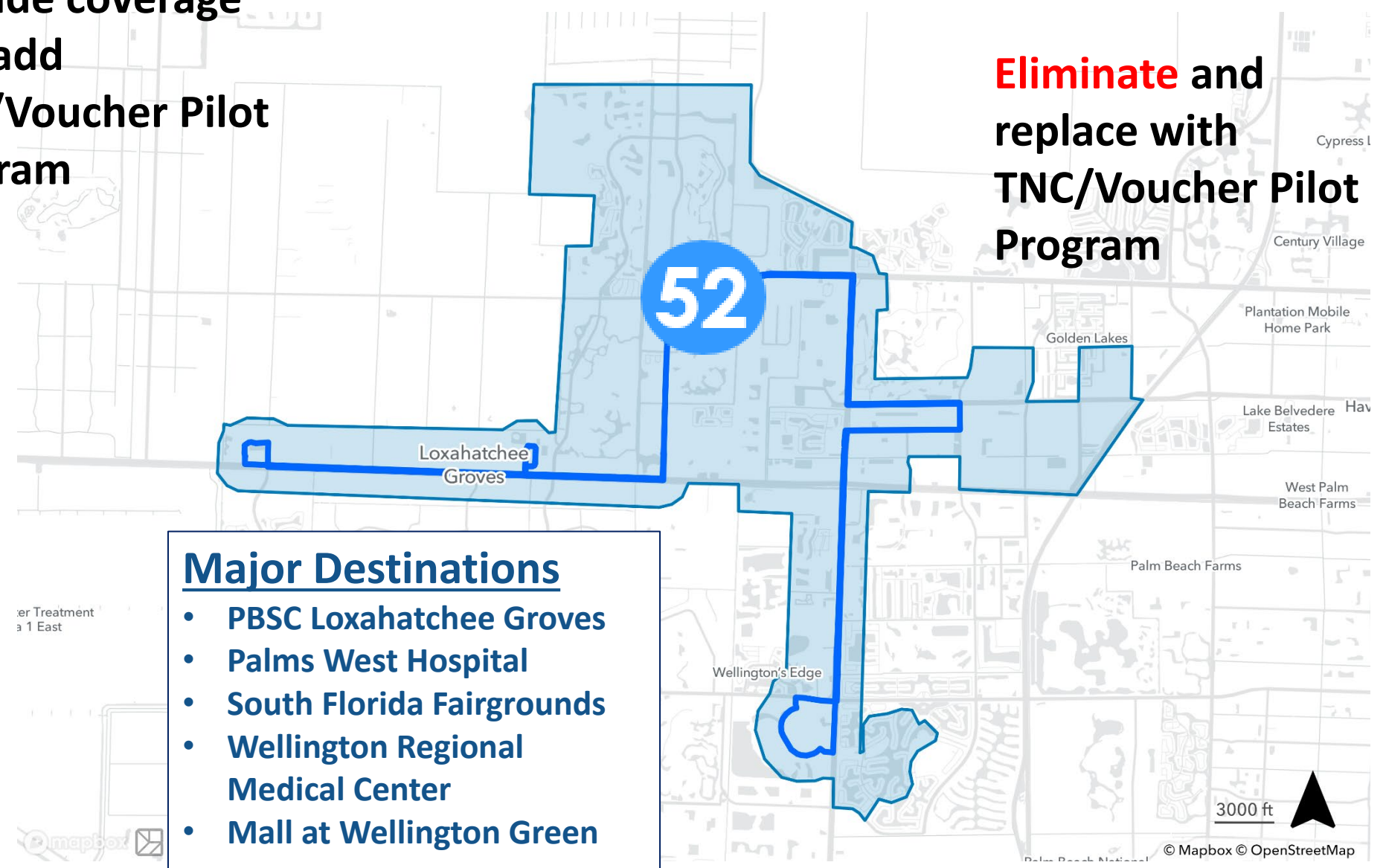
- Municipalities**
- Palm Beach Gardens
 - North Palm Beach
 - Lake Park
 - Riviera Beach
 - Mangonia Park



Eliminate Route 21 and modify routes 20 and 33 to provide coverage and add TNC/Voucher Pilot Program

Routes with other service cuts: 20 47 64 70 92

- Major Destinations**
- PBSC Loxahatchee Groves
 - Palms West Hospital
 - South Florida Fairgrounds
 - Wellington Regional Medical Center
 - Mall at Wellington Green
- Municipalities**
- Royal Palm Beach
 - Wellington



Eliminate and replace with TNC/Voucher Pilot Program



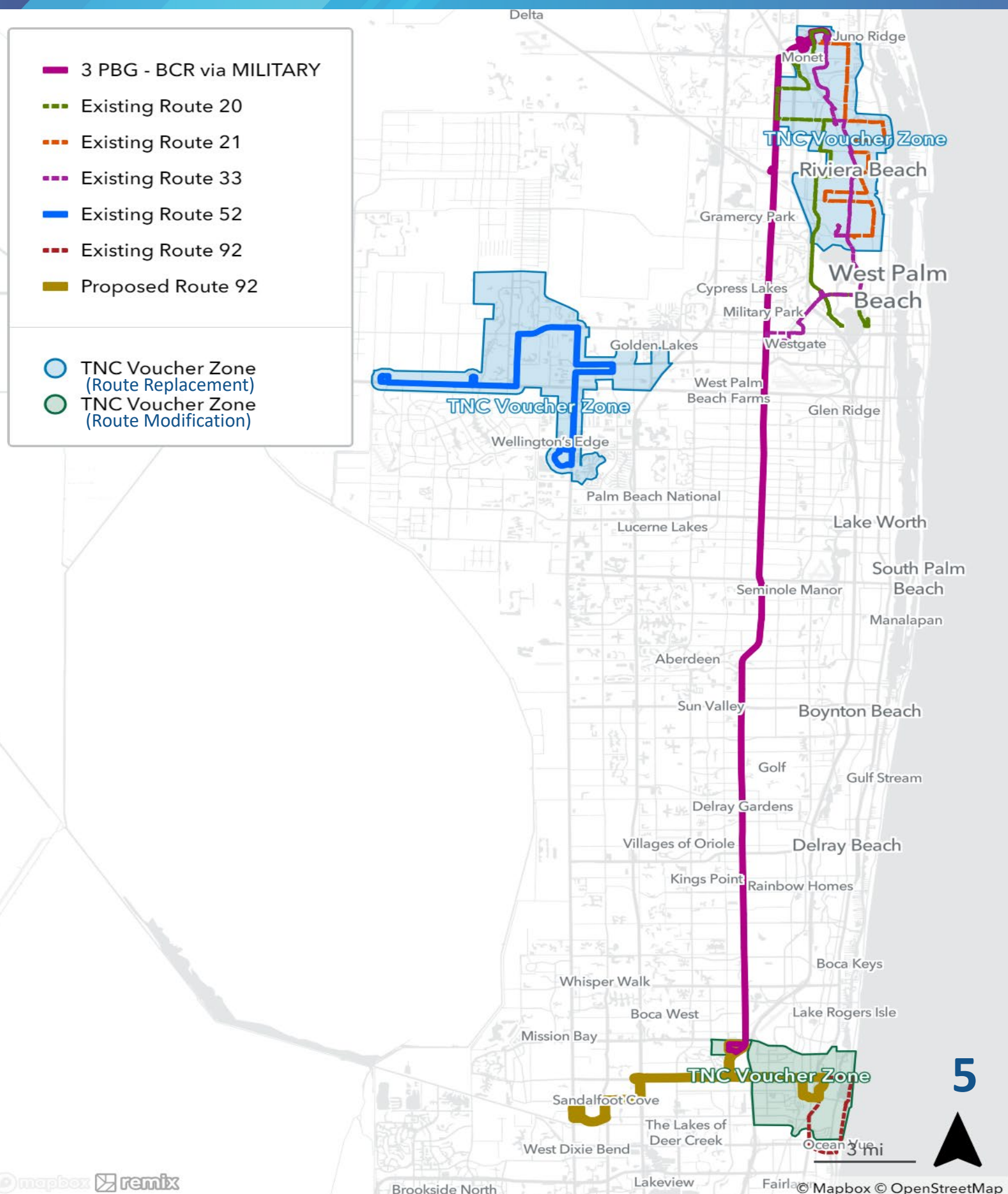
Fixed Route Service Efficiencies

Route	Description of Service Cuts (Savings)
21	Eliminate
52	Eliminate
20, 47, 92	Eliminate unproductive segments
64, 70	Reduce frequency to every 60 minutes from 45 minutes
Total Annual Fixed Route Cuts: \$2.4M (Est.)	

Route	Description of Service Improvements (Reinvestment)
TNCs	Introduce three (3) Pilot TNC/Voucher programs to replace routes 21, 52 and segments of route 92
3	Increase peak weekday frequency 30 to 20 minutes and Sunday from 60 to 30 minutes
20	Improve weekday 60 to 45 minute frequency – provides coverage for Route 21
33	Provides cover for Route 21 and extends to Azure apts. (formerly Stoneybrook)
40	Serve SR7 and Okeechobee, 30 minutes mid-day frequency
41, 43	Reallocate service hours
92	Increase frequency from every 60 to every 45 minutes
10	Introduce Service from the Gardens Mall to the Alton Community

Total Annual Fixed Route Reinvestments: \$2.4M (Est.)

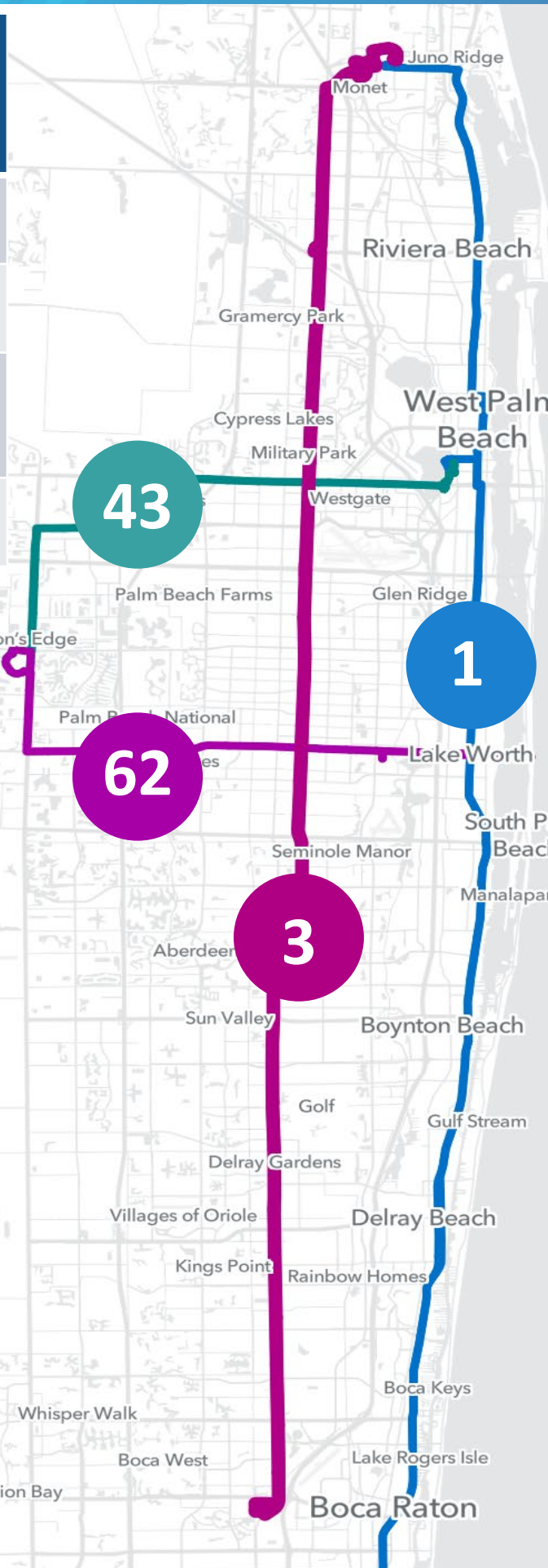
- 3 PBG - BCR via MILITARY
 - Existing Route 20
 - Existing Route 21
 - Existing Route 33
 - Existing Route 52
 - Existing Route 92
 - Proposed Route 92
-
- TNC Voucher Zone (Route Replacement)
 - TNC Voucher Zone (Route Modification)





Fixed Route Service Efficiencies

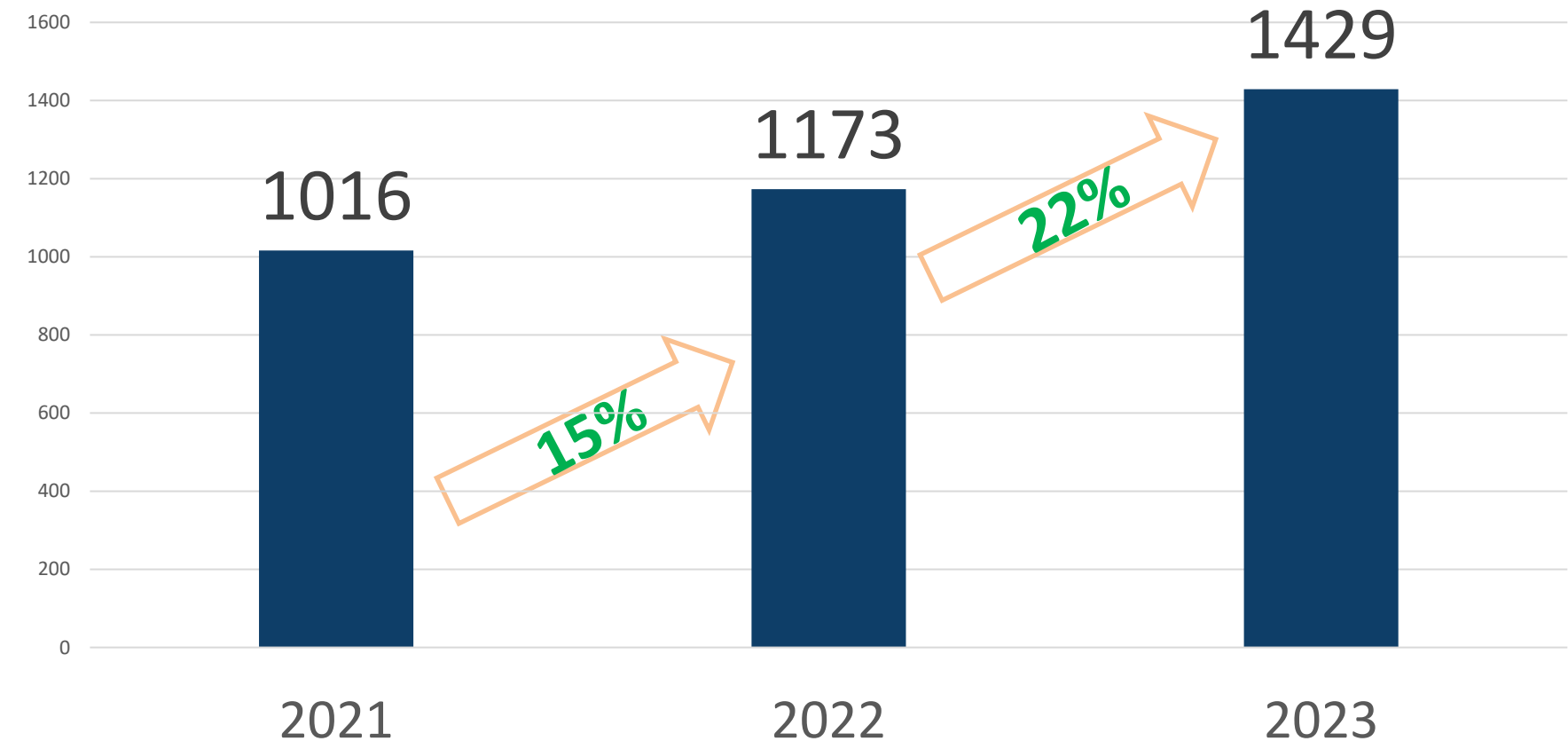
Route	Corridor	Frequency	Annual Ridership	PPH	PPH Rank
1	US1 (Palm Beach Gardens to Boca Raton)	20 Min	1.6M	21	4
3	Military Trail. (Palm Beach Gardens to Boca Raton)	30 Min	928,870	20	7
43	Okeechobee Blvd. (Downtown WPB to Wellington Mall)	20 Min	520,678	23	1
62	Lake Worth Road (LW Beach to Wellington Mall)	20 Min	557,955	23	2



Route 3 Employment Centers

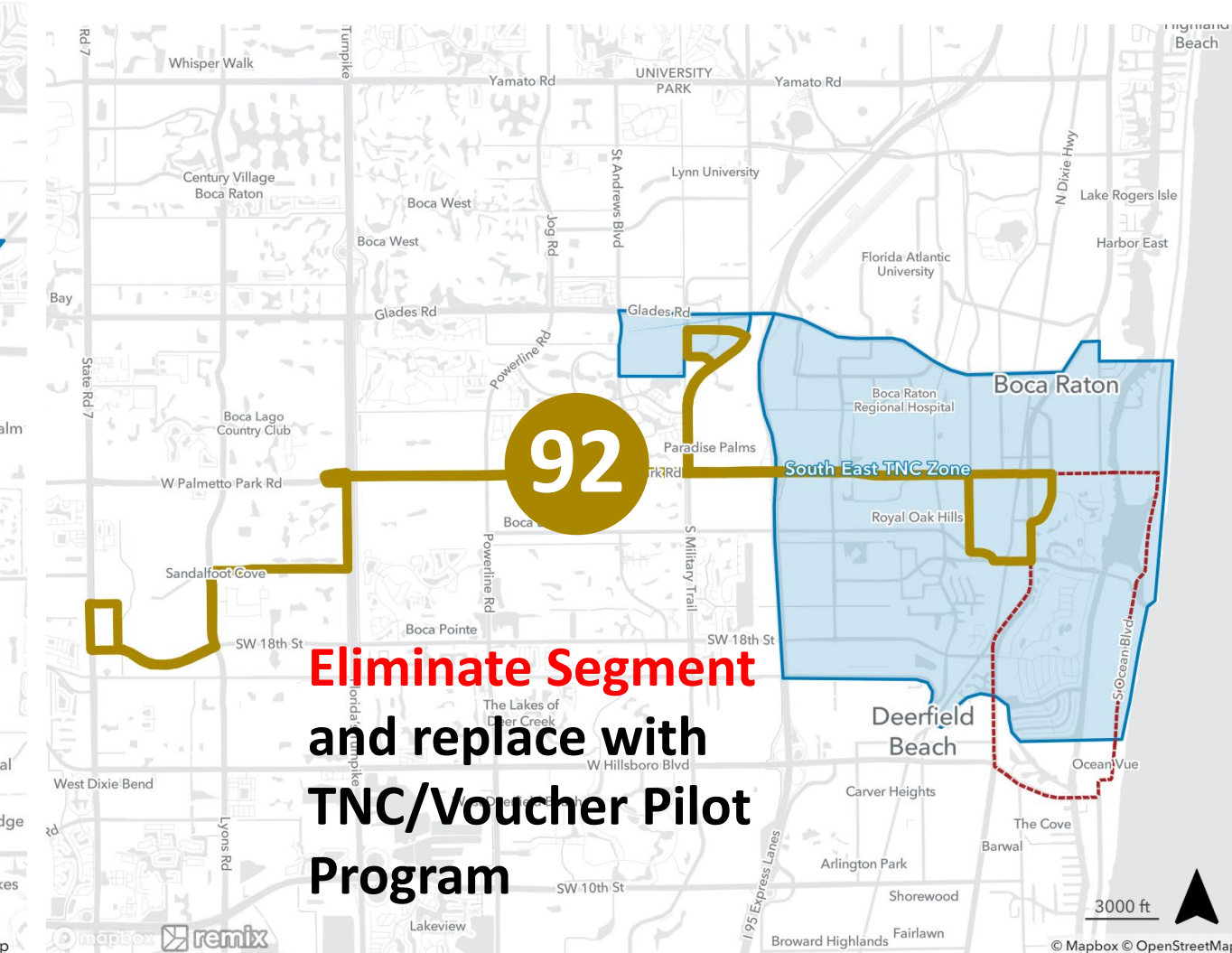
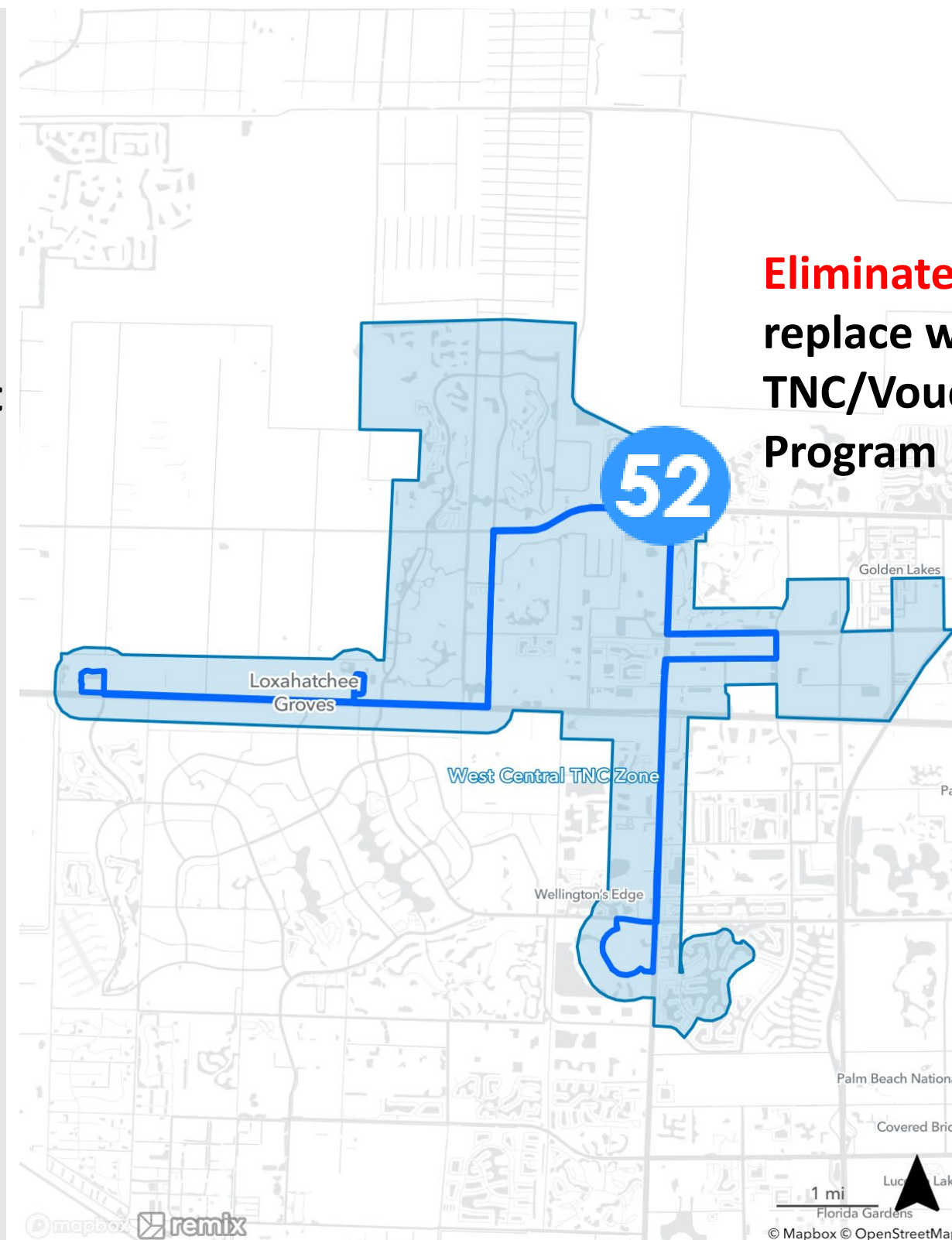
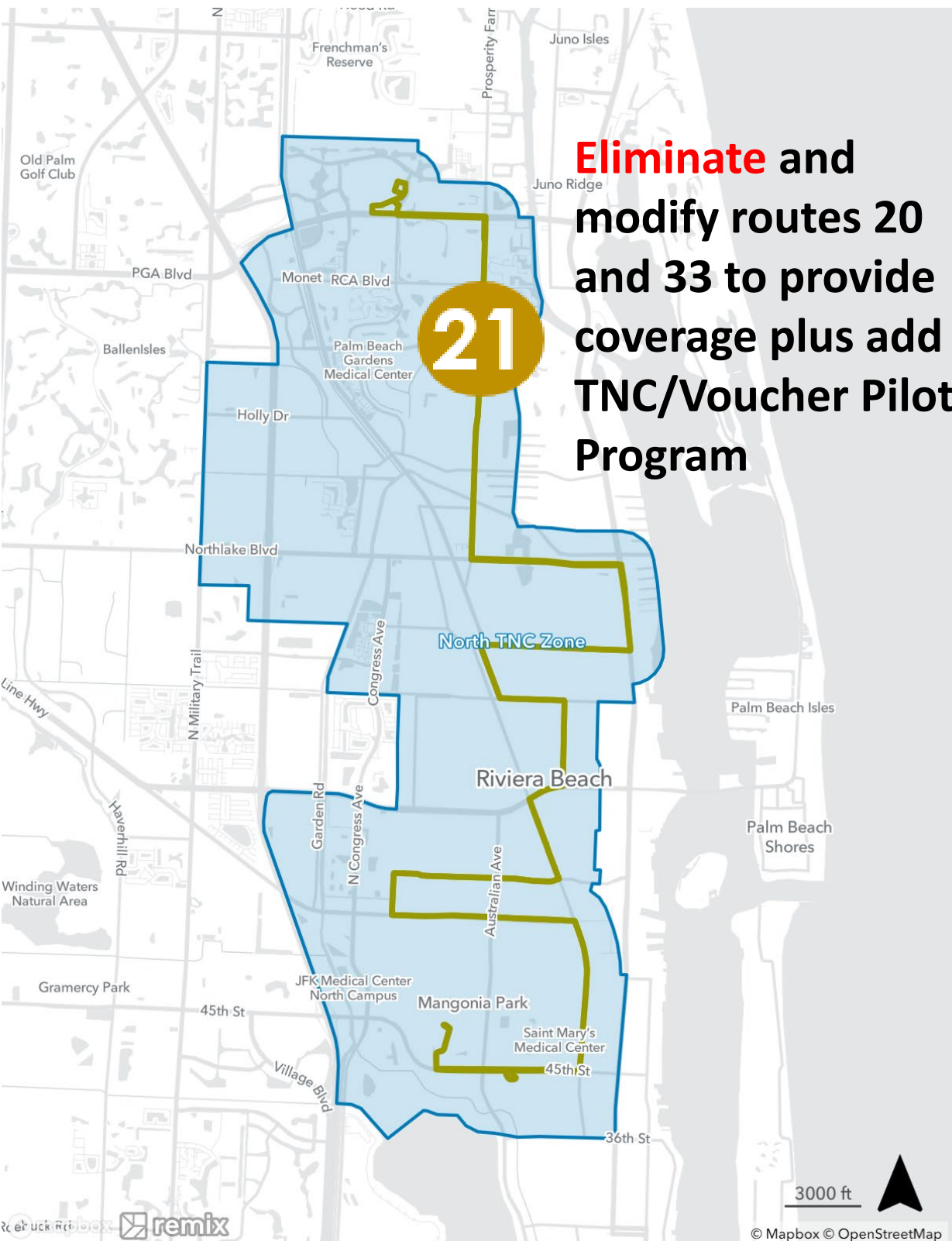
- Gardens Mall
- VA Medical Center
- Ballpark of Palm Beaches
- Rapids Water Park
- Keiser University
- Cross County Plaza
- Youth And Family Counseling
- Delray Medical Center
- South County Mental Health, Inc.
- Lynn University
- Glades Plaza
- Town Center Mall at Boca Raton

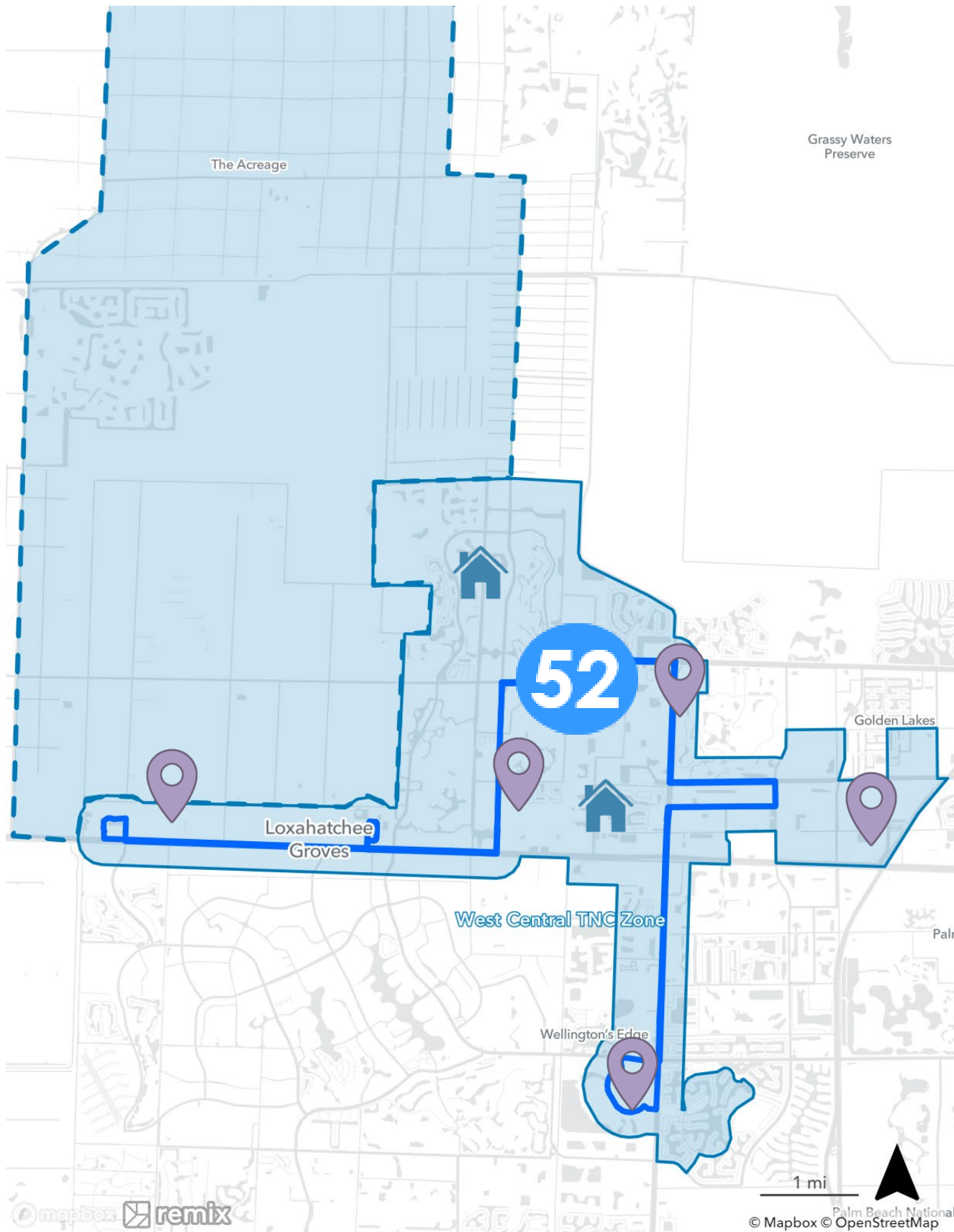
Route 43 Ridership Increase (Average Daily Boardings)





TNC / Voucher Pilot Program





How it Works



1. Select origin “**curb** or predetermined point” within zone.
2. Select destination “curb or **predetermined point**” within the zone. **Customer’s trip cannot extend beyond the zone.**
3. If trip is within 2.5 miles, the customers **\$2 co-pay and \$8 voucher** will cover one-way trip.
4. If customer’s trip exceeds the subsidy within the zone, the customer will be responsible for the difference.
5. If customer does not have a smart phone or requires an ADA vehicle, ADA accessible Taxis will be deployed by telephone.

**Taxi operator shall have a drug and alcohol testing policy in place.*

**Trips must originate or end at a predetermined point within the zone.*



Operational Efficiencies



Operational Efficiencies	Description	Amount
Maximizing Grant Revenues	Paratransit Operating Revenue Replacement	\$2,114,901
	Eligible Maintenance Cost Revenue Replacement	\$1,500,000
	Eligible Safety & Security Revenue Replacement	\$ 250,000
Eliminating Redundancy	Contractual Services – Bus Cleaning Contract (Maintenance)	\$1,172,460
TOTAL		\$5,037,361

Connection Efficiency Project (CEP) Implementation Plan



Paratransit





Recommendation 1: Align ADA Service Area with FTA Guidelines

- ADA paratransit service will be provided within $\frac{3}{4}$ of a mile of Fixed-Route System

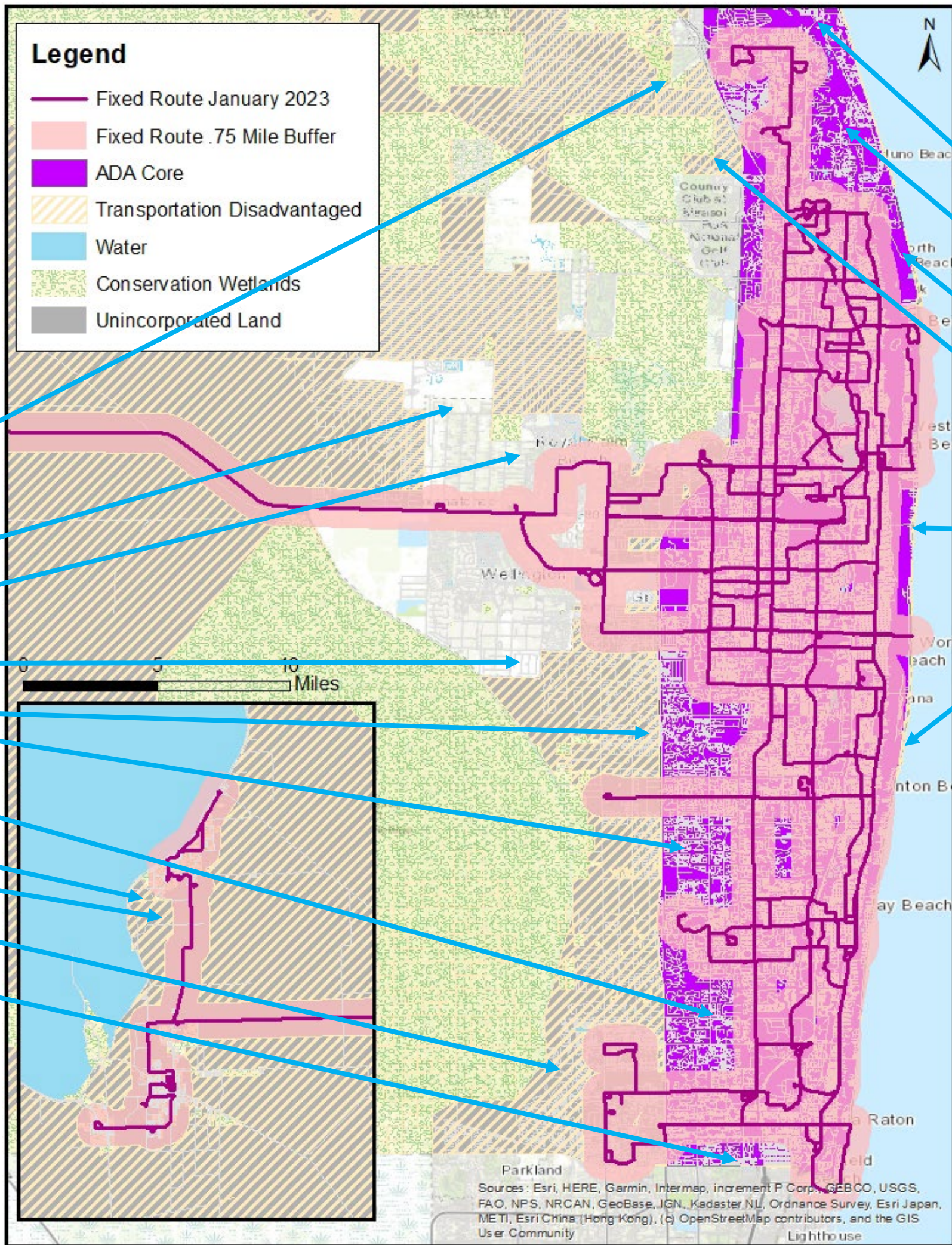
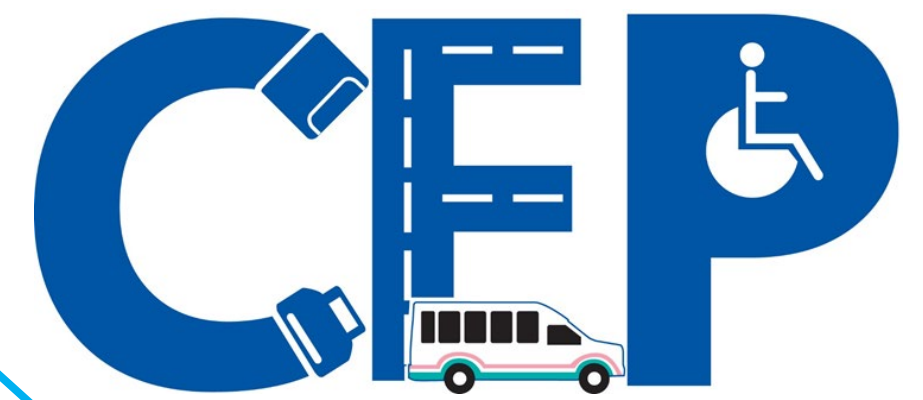
Recommendation 2: Launch Alternative Transportation Services Program

- To cover trips of new ADA coverage area using Uber, Lyft, Taxi, UZURV or less costly paratransit provider
- TD (Transportation Disadvantaged) trips outside of the ADA area will be covered by the alternative transportation services program

Recommendation 3: Adjust Fares to Federal Guidelines

- To no more than twice the conventional Fixed-Route Fare (**\$3.50 to \$4.00 per trip**)

Recommendation 1: Align ADA Service Area with FTA Guidelines



- Unincorporated Areas
- Town of Loxahatchee Groves
- Village of Royal Palm Beach
- Village of Wellington
- City of Boynton Beach
- City of Delray Beach
- City of Pahokee
- City of Belle Glade
- Unincorporated Areas
- City of Boca Raton

- Village Tequesta
- Town of Jupiter
- Town of Juno Beach
- City of Palm Beach Gardens
- Town of Palm Beach
- Manalapan

FY2022 PTC Riders: 8,084

ADA Riders: 5,420

Transportation Disadvantaged (TD): 2,650

Sources: Esri, HERE, Garmin, Intermap, increment P Corp., GEBCO, USGS, FAO, NPS, NRCAN, GeoBase, IGN, Kadaster NL, Ordnance Survey, Esri Japan, METI, Esri China (Hong Kong), (c) OpenStreetMap contributors, and the GIS User Community



Recommendation 2: Launch Alternative Transportation Service



Federally Mandated ADA Service will be provided by Palm Tran Connection

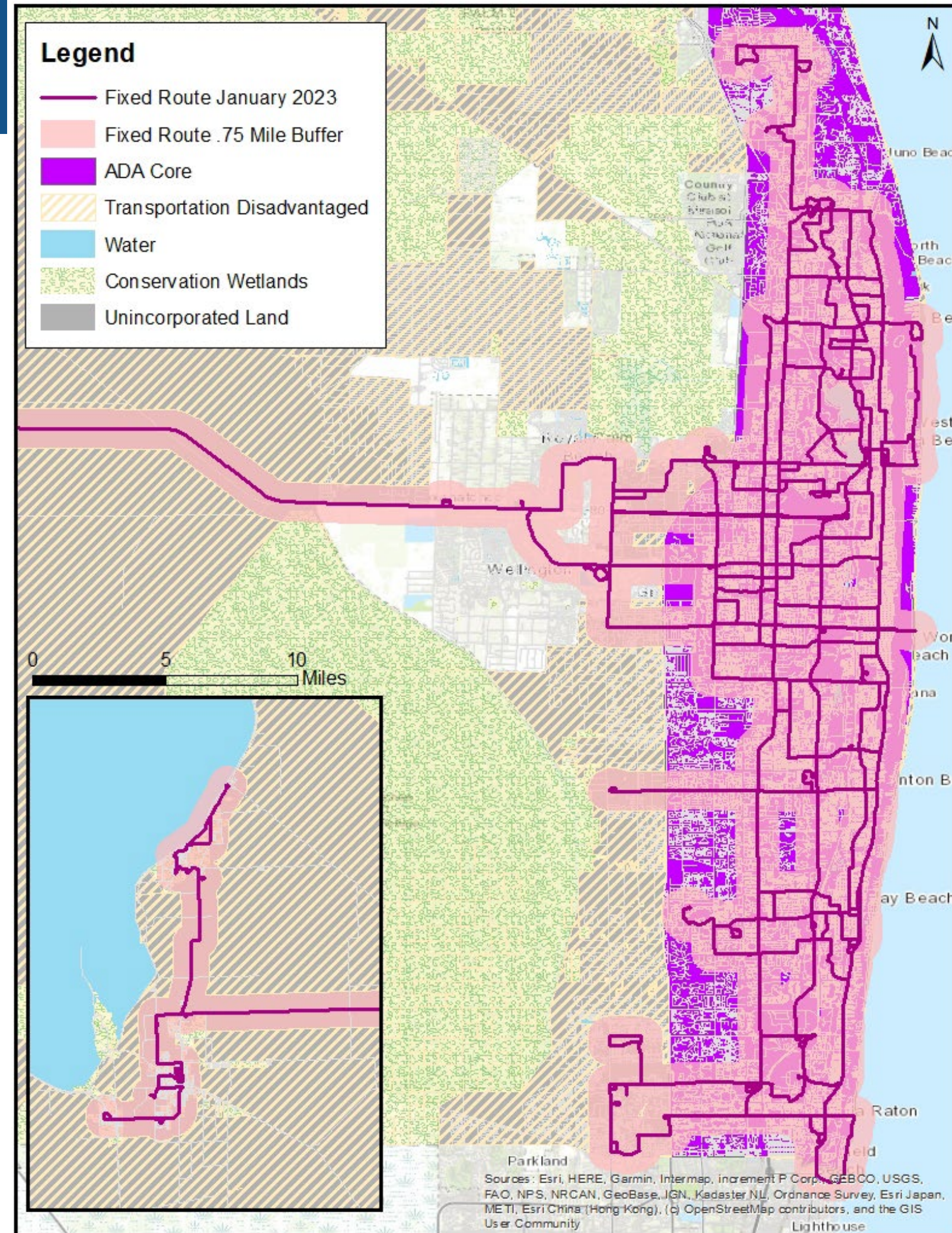


Alternative Transportation Provider will provide service outside of ADA service area (example providers: Uber, Lyft, Taxi, Uzurv:

1. UBER/Lyft for those that can utilize an ambulatory curb-to-curb service and use the technology associated with the program
2. Compliant door-to-door service (UZURV) for those that do not have a mobility or disability restriction
3. ADA Accessible Taxi Service for Non-Ambulatory
4. Fare same as ADA service



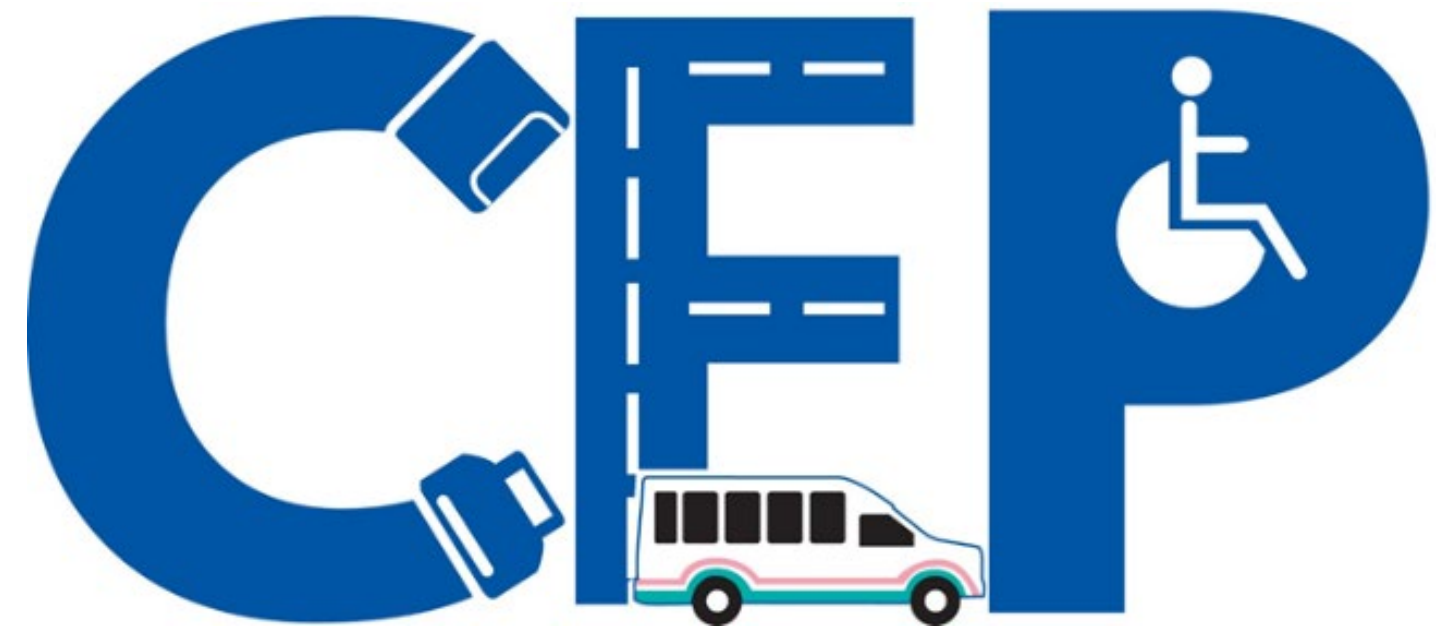
UZURV





Recommendation 3: Adjust ADA Fare to Federal Guidelines

- Demand Management
- FTA recognizes high cost of paratransit operations and allows higher fares
- Last Paratransit fare adjustment: \$3 to \$3.50 in 20 13 (17%)
- Recommendation: \$3.50 to \$4 (14%)
- Requires separate board action at future BCC meeting





Recommendations – Board Direction



Fixed-Route

- 1) Fixed-Route Service Efficiency and Reinvestment \$2.4M January 2024
- Eliminate Route **52** and replace with TNC/Voucher Program
 - Eliminate Route **21** and:
 - ✓ Add TNC/Voucher Program
 - ✓ Restructure Routes Extend Routes **20** **33**
 - Service Cuts on Routes: **20** **47** **64** **70**



Operational Efficiencies

- 2) Implement Operational Efficiencies \$5.0M January 2024
- Maximizing Grant Revenues
 - Eliminating Redundancy (Cleaning Services)



Paratransit

- 3) Continue Implementation of the CEP using a phased approach with each phase to be approved by the BCC FY20 24 –FY20 27
- I. Adjust Fares to Federal Guidelines (*Separate Board Action Required*)..... FY20 24
 - II. Align ADA Service Area with FTA Guidelines FY20 24 –FY20 27
 - III. Alternative Transportation Service Beyond ¾ Mile (TD Service Plan) FY20 24 –FY20 27



Next Steps – Board Direction

- 1** Presentation to TPA, Village of Royal Palm Beach, City of Boca Raton, City of Riviera Beach, City of Palm Beach Gardens and Village of Wellington. **Oct. to Dec., 2023**
- 2** Direct Palm Tran Service Board (PTSB) to hold public hearing on recommendations **Oct. 26, 2023**
- 3** BCC to ratify plan at the next BCC Workshop **Nov. 28, 2023**
- 4** Begin implementation of approved recommendations with each phase to be approved by the BCC **FY 2024 thru FY 2027**



Thank you

