



# Vision 2050

Kicking off the 2050 LRTP Update  
March 2023 | TPA Committees

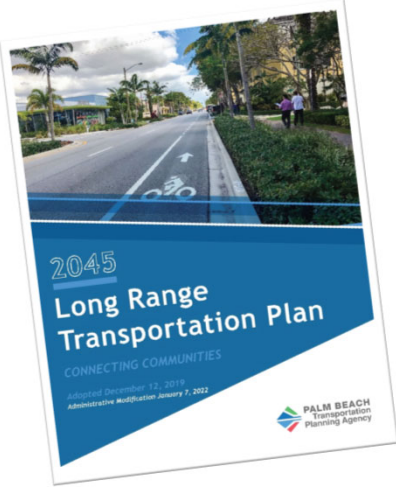
1

## Imagine What 2050 Will Look Like

1996		
2023		

2

# Long Range Transportation Plan



Establishes the region's transportation goals

Identifies regionally significant transportation investments

25-year horizon

Updated every 5 years

3

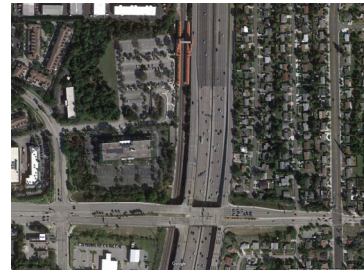
# What Drives Transportation



Traffic



Travel Options




Land Use

4


## Striving for Balance

Quality of Life



5

## Results Oriented Planning



- Performance based approach
- Comprehensive needs & desires
- Financially realistic based on expected funding

6

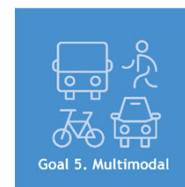
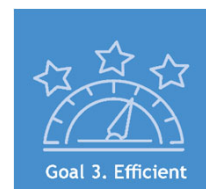
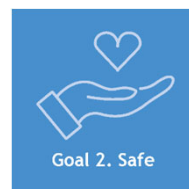
## Key Factors for 2050

- Additional emphasis:
  - Consider Housing
  - Equity and Justice40
  
- Scenario Planning:
  - Transit (561 Corridors)
  - Technology (Autonomous, Connected, Electric Vehicles)



7

## First Steps: Goals & Objectives



8

## First Steps: Public Involvement Plan



Reminder:  
Municipal and agency stakeholders,  
please send us key contacts, if you  
haven't already.

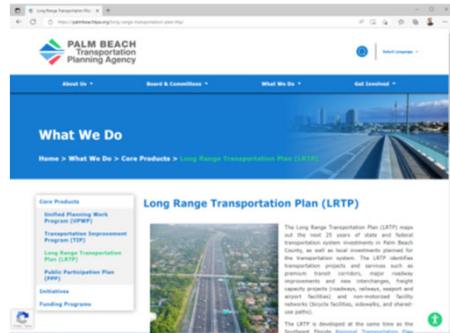
9

## Schedule

Goals & Objectives	Needs Assessment & Project Evaluation	Modeling & Scenario Planning	Plan Review & Adoption
Spring 2023	Winter 2023	Spring 2024	Dec. 2024

10

# Stay Informed & Engaged



[PalmBeachTPA.org/LRTP](https://PalmBeachTPA.org/LRTP)

## Visit TPA's LRTP Page:

- Sign up to stay informed
- One-stop for news & updates
  - Public outreach & engagement
  - Surveys
  - Plan materials
  - Call for projects (Summer-Fall)

11

# Questions?

Nathan George, Lead Planner – LRTP Coordinator

[NGeorge@PalmBeachTPA.org](mailto:NGeorge@PalmBeachTPA.org)

561.725.0810

12