



PORT of
Palm Beach

IMPORT • EXPORT • YOUR PORT
PORTOFPALMBEACH.COM

108 Years of Economic Development

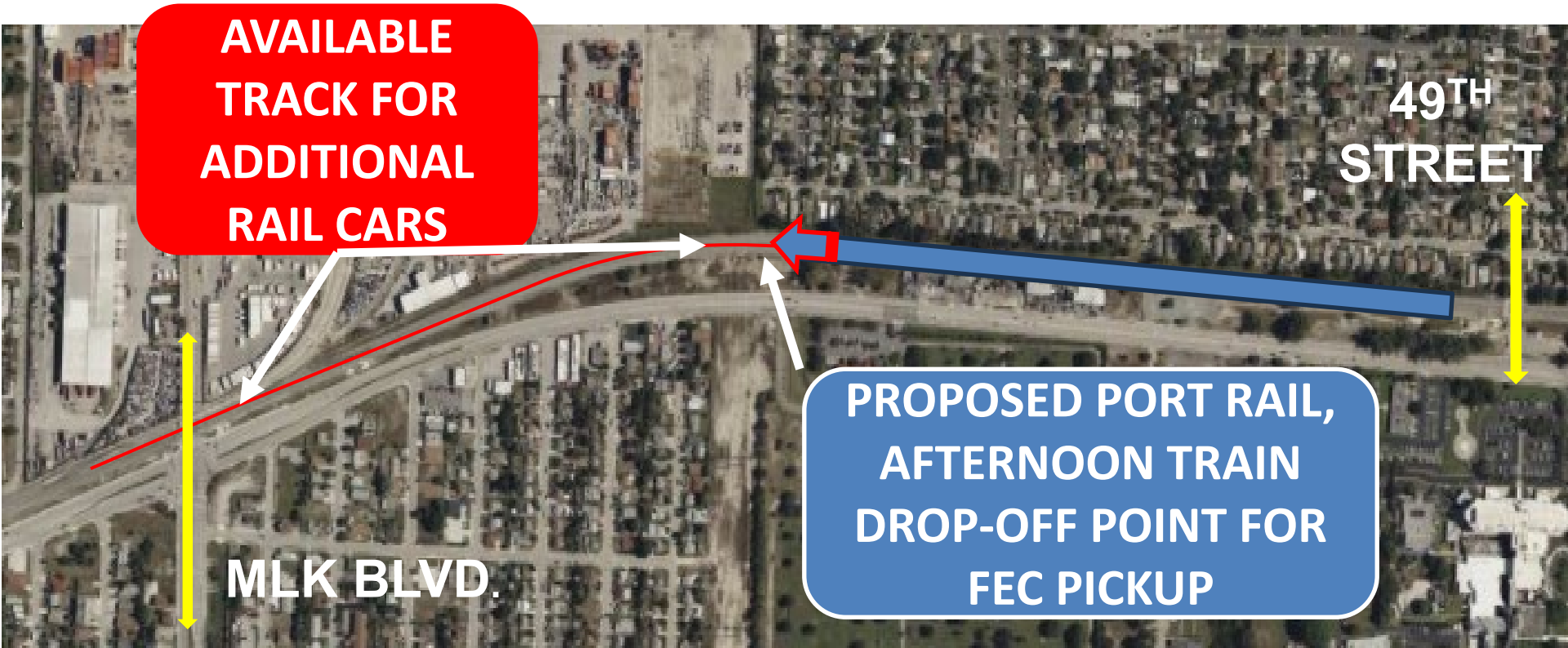
Alleviating The Rail Crossing Blockage

AVAILABLE
TRACK FOR
ADDITIONAL
RAIL CARS

49TH
STREET

PROPOSED PORT RAIL,
AFTERNOON TRAIN
DROP-OFF POINT FOR
FEC PICKUP

MLK BLVD.



Alleviating The Rail Crossing Blockage

Port Railroad staff has coordinated with FEC and now spots the afternoon outbound train south towards 49th St.

This change has made a significant impact with 45th St. and Blue Heron only closing for the actual passing of the fully loaded train, approx. 5 mins

M.L.K. JR. BLVD

PRESIDENT BACK O'BAMA HWY

BROADWAY

AVENUE E

PORT OF
PALM BEACH

PORT RD.

FLORIDA POWER
& LIGHT

ACCESS RD.

- | | | | |
|--|---|--|--------------------|
| | NEW PAVEMENT | | EXISTING TRACK |
| | MILL & RESURFACE | | PROPOSED TRACK |
| | RE-STRUPE | | PROPOSED FENCELINE |
| | TROPICAL TWC GATE LANES (2 LANES) | | |
| | GENERAL CARGO TWC GATE LANE (1 LANE) | | |
| | PORT PASS PROCESSING LANES (8 SPOTS) | | |
| | TROPICAL IN GATE OCR LANES (2 LANES) | | |
| | TROPICAL IN GATE LANES (2 STANDARD + 1 OVERSIZE) | | |
| | OUT GATE (2 OCR RPM LANES 2 TOTAL + 1 OVERSIZE) | | |
| | SECONDARY RPM INSPECTION AND CBP BOOTH | | |
| | TROPICAL OUT GATE LANES (2 STANDARD + 1 OVERSIZE) | | |
| | GENERAL CARGO BYPASS LANE | | |
| | GENERAL CARGO CHECK-IN AND TWC ESCORT | | |
| | PORT SECURITY BOOTH PLUS ENTRY TWC PEDESTALS | | |
| | GENERAL CARGO ACCESS ROAD WITH RPM PORTALS | | |
| | FIVE NEW 138.8 RAIL LEADS | | |
| | PROPOSED PAVEMENT IMPROVEMENTS | | |
| | SECURITY BOOTH | | |

REVISIONS



PORT OF PALM BEACH DISTRICT - ENGINEERING & CONSTRUCTION

Port Infrastructure Development Program

- **The PIDP is a \$26.5 million project to increase the speed and efficiency by which cargo moves through the Port.**
- **Redevelopment of on-dock intermodal container transfer facility, with over a thousand feet of new storage track.**
- **New gate and internal roadway system that will decrease inbound truck processing times by 50%**

Margaritaville At Sea Paradise

Economic Impact

Total Jobs 905

Business Revenue

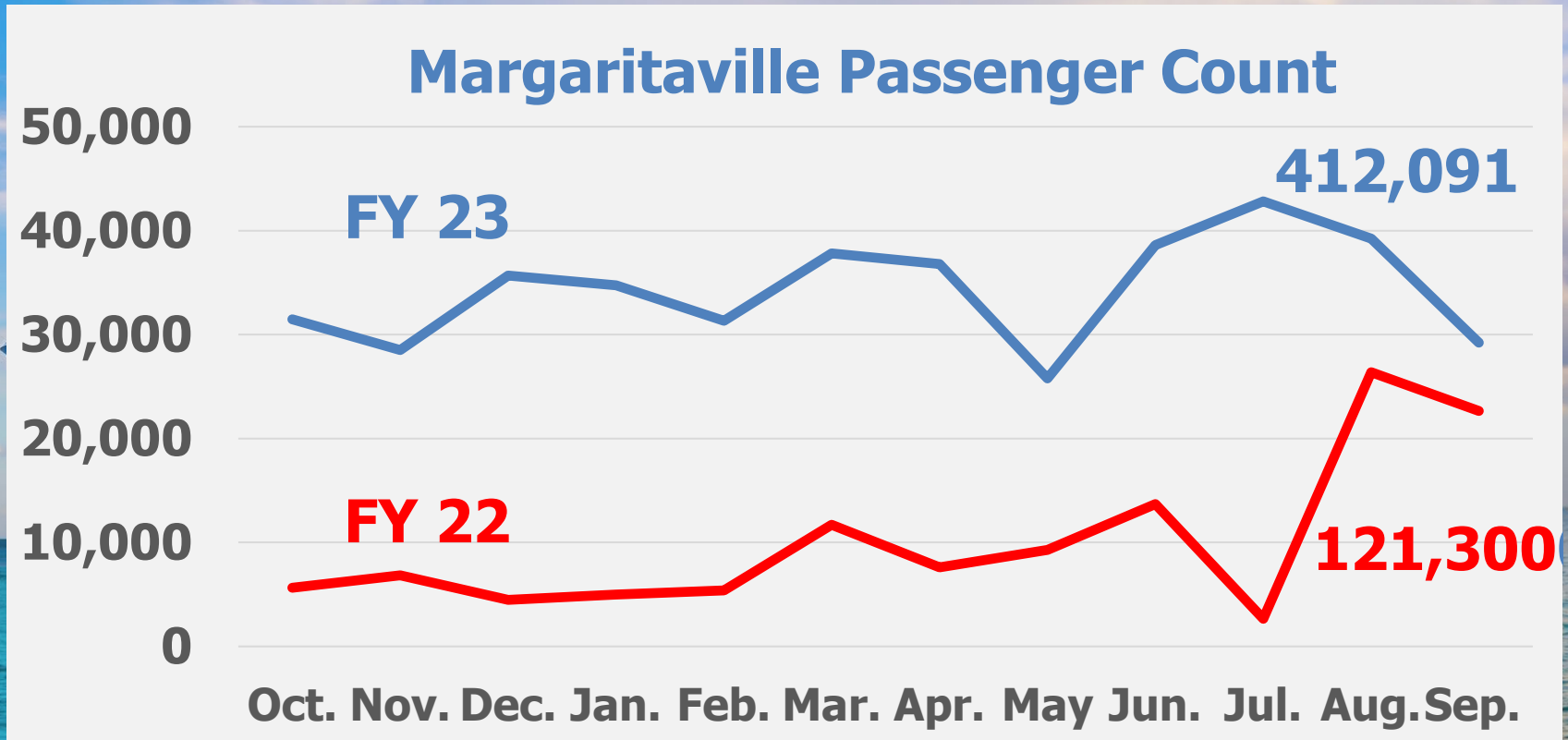
\$91,870,000

Local Purchases

\$11,042,000



Margaritaville At Sea Paradise



QUESTIONS?

