




Performance Measures

February 2023 | TPA Governing Board


1

Why Performance Measures?


2045 Long Range Transportation Plan




Goal 1. Preserve




Goal 2. Safe



Goal 3. Efficient



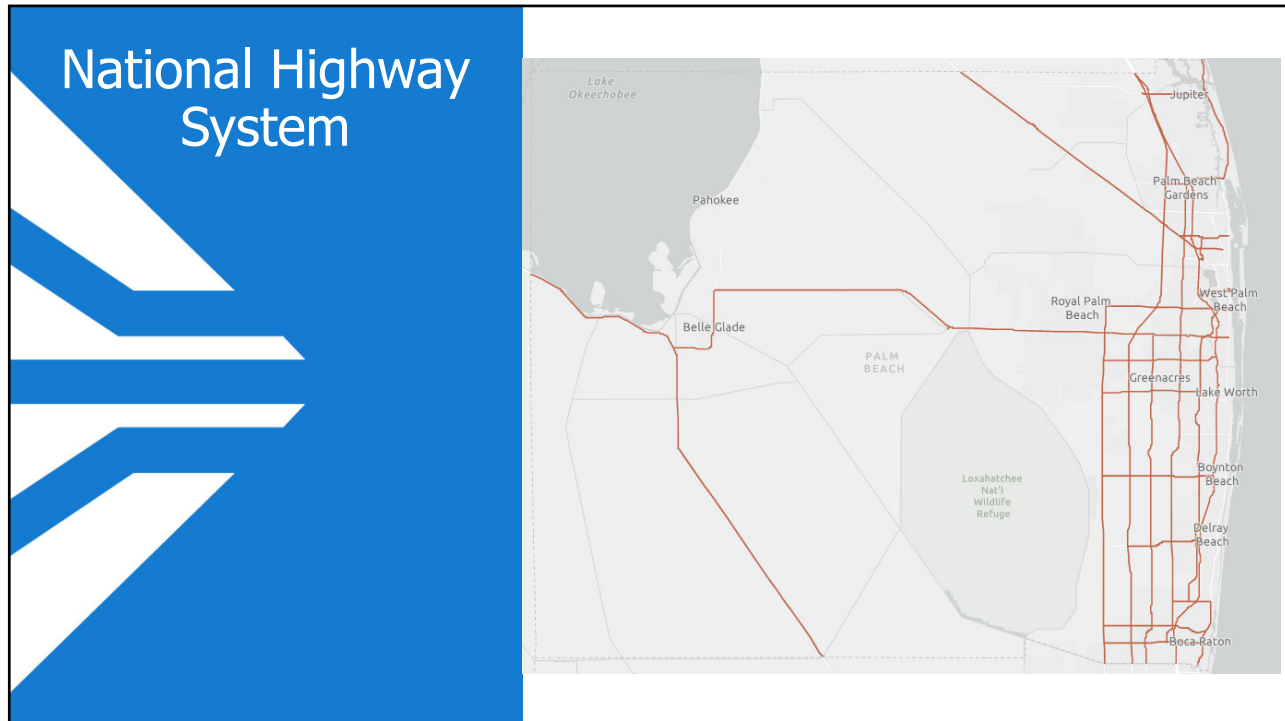
Goal 4. Connected



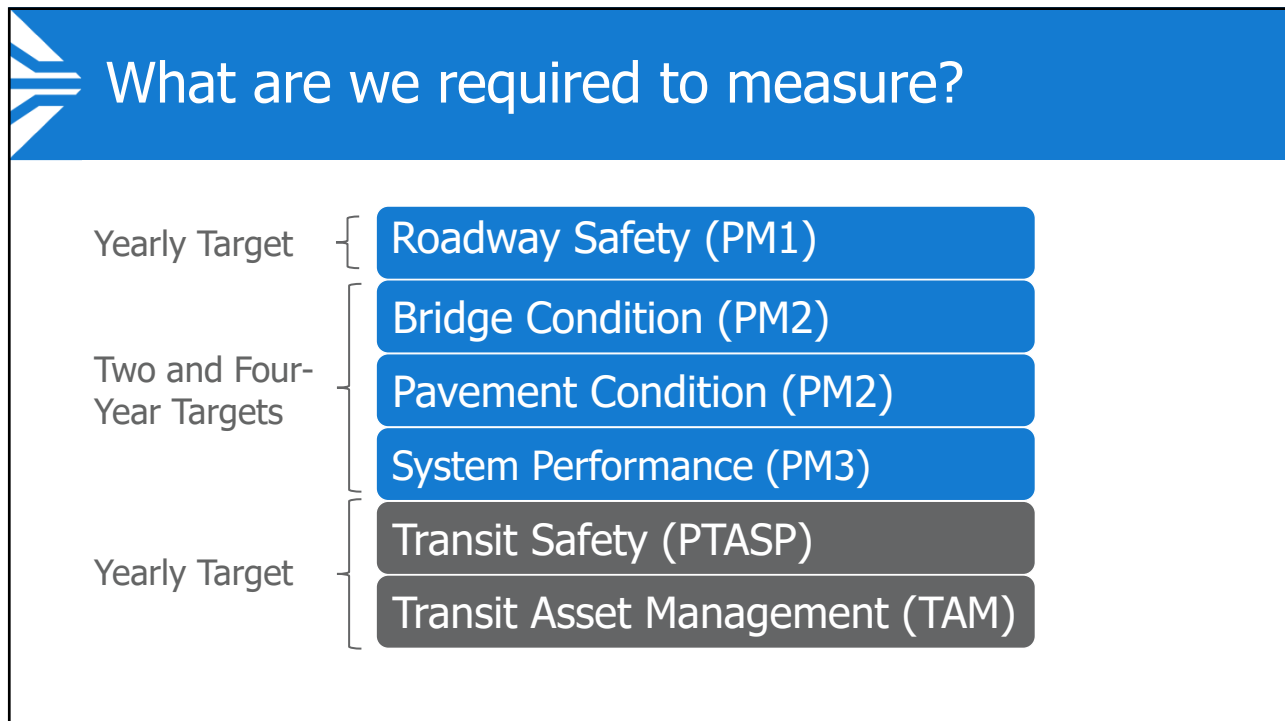
Goal 5. Multimodal

PalmBeachTPA.org/PM

2



3



4

Safety Measures

Number of Fatalities

Rate of Fatalities

per 100 million vehicle miles traveled (VMT)

Number of Serious Injuries

Rate of Serious Injuries

per 100 million vehicle miles traveled (VMT)

**Number of Non-Motorized
Fatalities & Serious Injuries**

5

5

Previous Targets

- USDOT Target is ZERO
- FDOT Statewide Target is ZERO
- TPA adopted ZERO: 2018 – 2022
- TPA Vision Zero Action Plan



6

6

Safety Performance

Performance Measures	2017 - 2021 Average	Unofficial 2022	Trend	2023 Proposed Targets
Fatalities	183	221	↑	0
Fatality rate per 100 million VMT	1.31	N/A	↑	0
Serious injuries	1,029	816	↓	0
Serious injury rate per 100 million VMT	7.37	N/A	↓	0
Pedestrians & bicyclists fatalities & serious injuries involving a motor vehicle	206	203	↑	0

Official FDOT data
Preliminary Signal4 data as of 2/14/23

Crash rates not available until release of vehicle miles traveled data

7

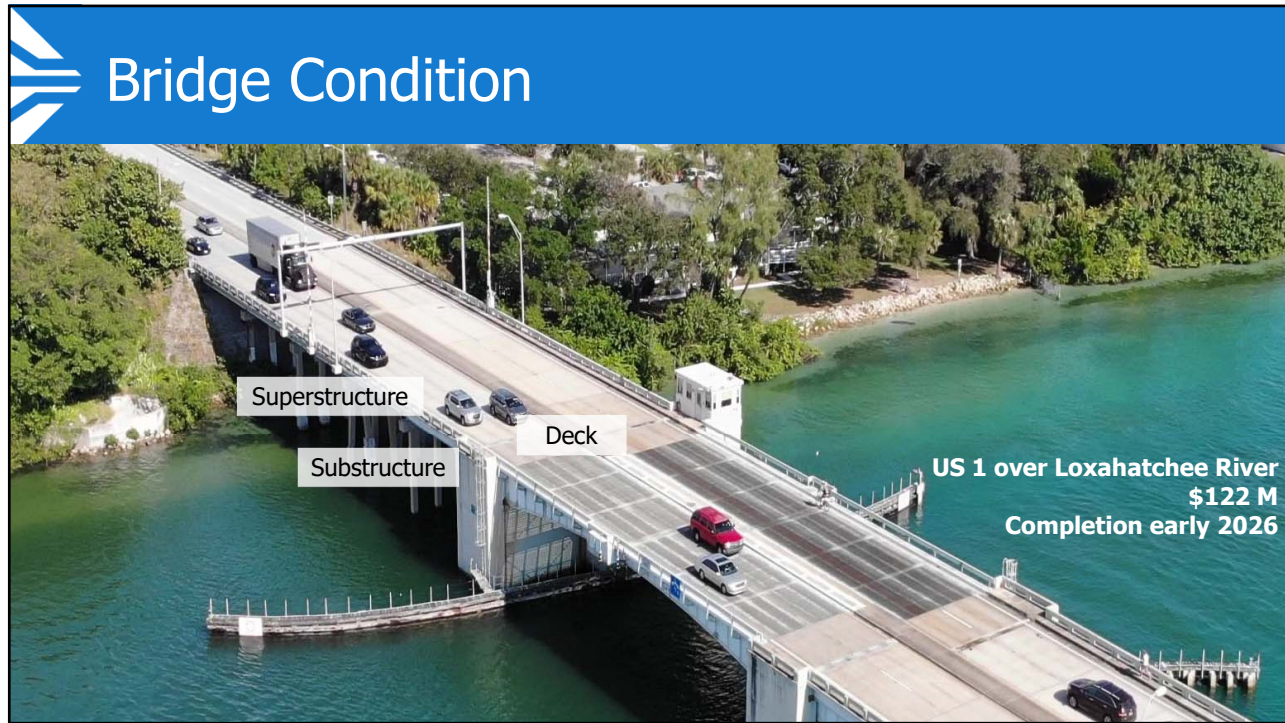
TPA Safety Efforts

- Complete Streets**
 - Promotion of policies and implementation
 - March 2023 Workshop
- Vision Zero**
 - 12 Municipalities
 - April 2023 Workshop
- Grant Support**
 - 5 Safe Streets and Roads for All Letters of Support
- Safety Events & Programs**
 - ~40 Events Annually
 - Roadway Safety Audits
 - Walks/Rides
 - FDOT Ped/Bike Safety Coalition

PEDESTRIAN & BICYCLE QUARTERLY CRASH REPORT

QUARTER

8

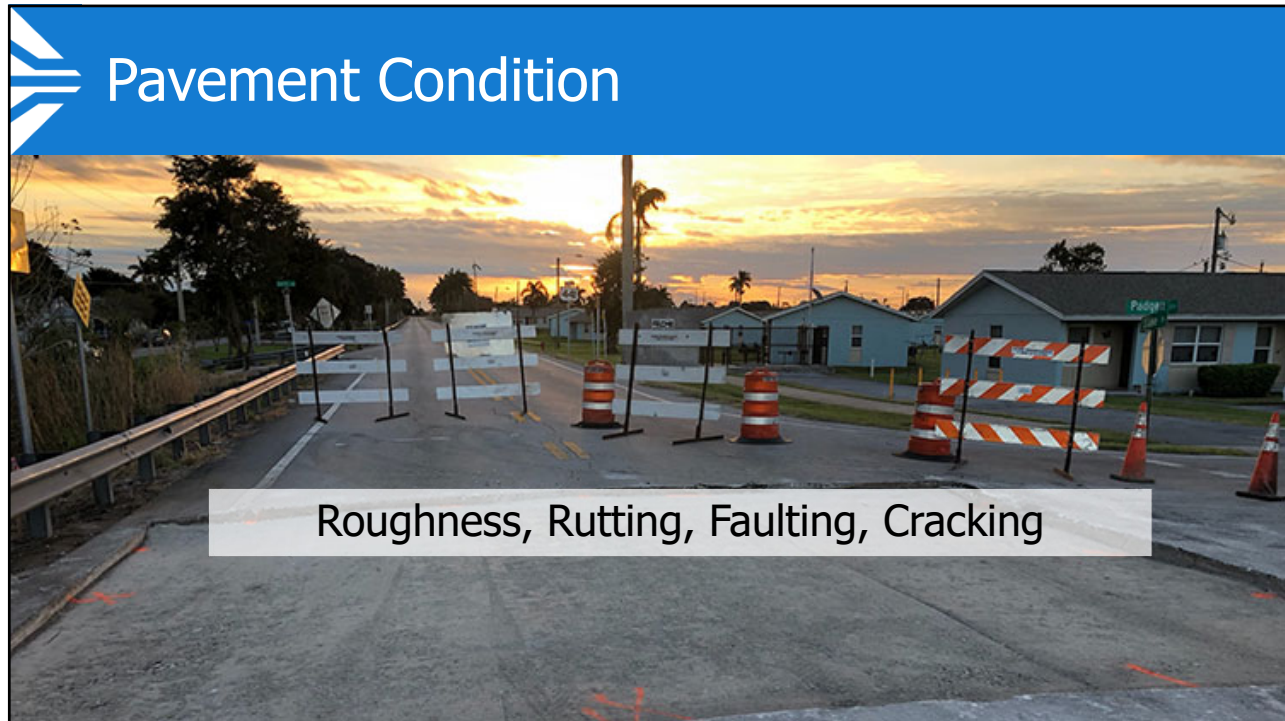


9

Bridge Condition

Performance Measure	2022 Actual	2023 & 2025 FDOT Target	2023 & 2025 TPA Target
National Highway System Bridges (NHS) in Good Condition	82.1%	≥ 50%	≥ 50%
National Highway System (NHS) bridges in Poor Condition	1.03%	≤ 10%	≤ 5%

10



12

Pavement Condition

Performance Measure	2021 Actual	2025 FDOT Target	2025 TPA Target
Interstate pavement in Good condition	59.5%	≥ 60%	≥ 60%
Interstate pavement in Poor condition	0.0%	≤ 5%	≤ 5%
Non-Interstate NHS pavement in Good condition	45.1%	≥ 40%	≥ 40%
Non-Interstate NHS pavement in Poor condition	1.2%	≤ 5%	≤ 5%

Recommend adopting statewide targets

13

System Performance (PM3)

Travel Time Reliability

How reliable is your daily commute?

Daily AM Peak travel time

15

System Performance

Performance Measure	2021 Actual	2025 FDOT Target	2025 TPA Target
Percent of reliable person-miles traveled on the Interstate	83.1%	≥70%	≥70%
Percent of reliable person-miles traveled on the non-Interstate NHS	96.8%	≥50%	≥50%
Truck travel time reliability ratio (TTTR) on the Interstate	1.78	≤2.0	≤2.0

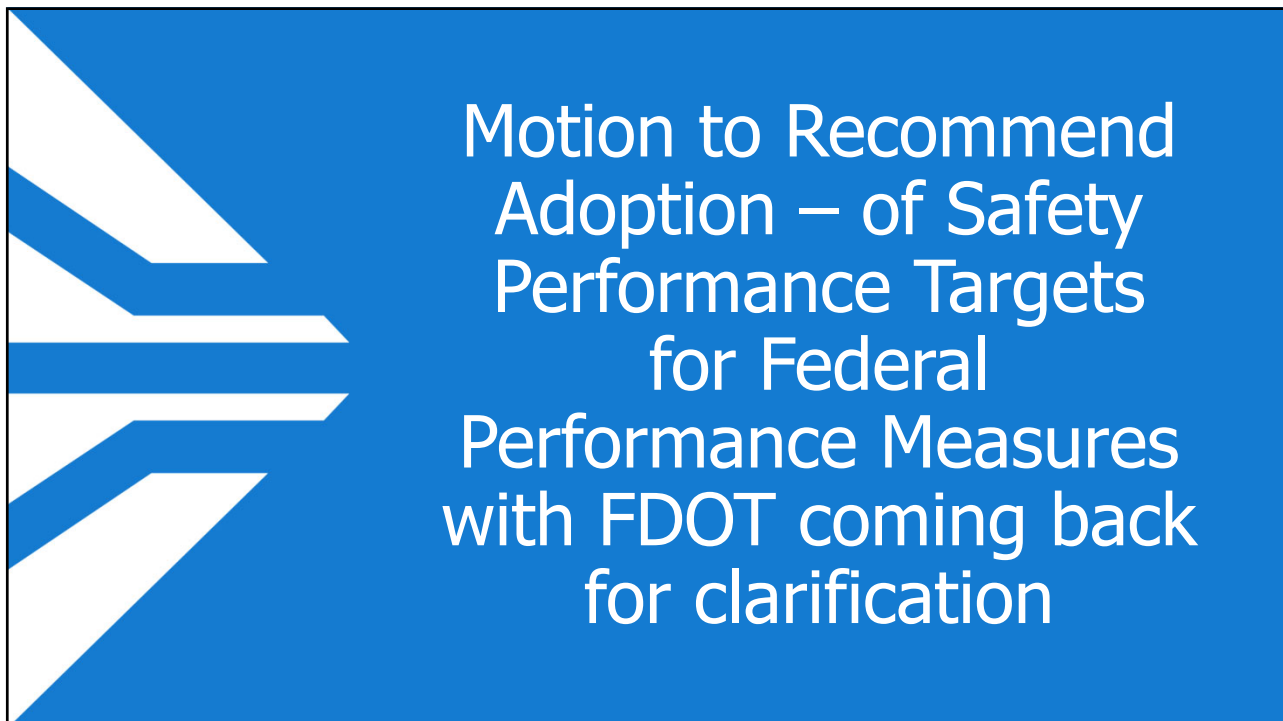
Recommend adopting statewide targets

16



Motion to Recommend
Adoption - Targets for
Federal Performance
Measures

17



Motion to Recommend
Adoption – of Safety
Performance Targets
for Federal
Performance Measures
with FDOT coming back
for clarification

18