



District 4

2020 Urban Area Boundary and Functional Classification Adjustments

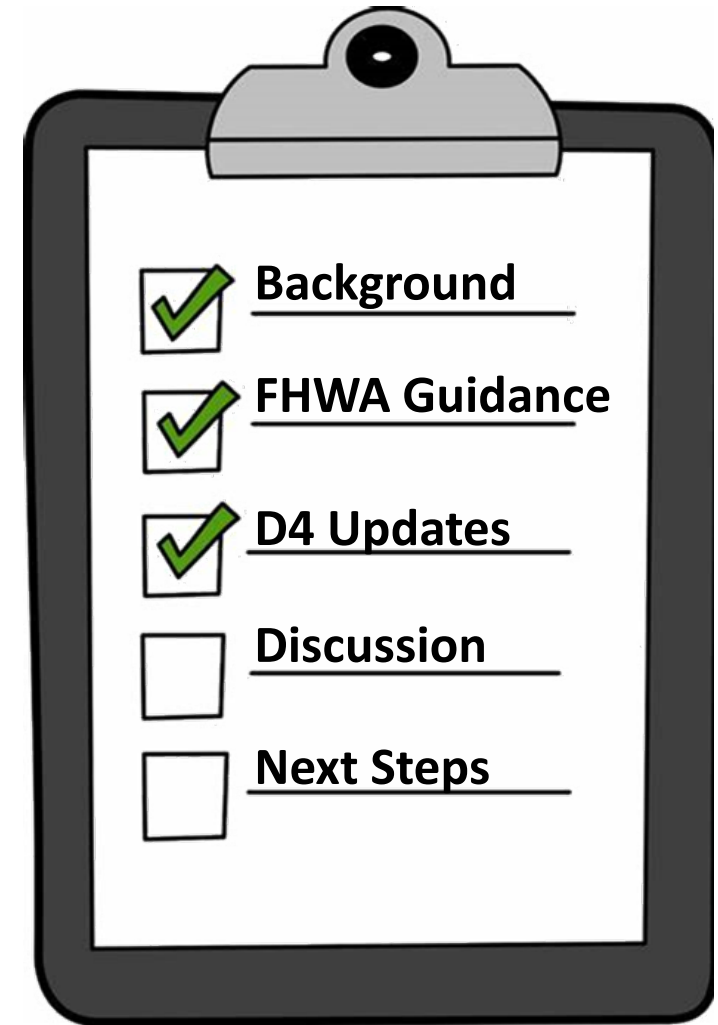
Dec. 6th, 2023





Agenda

- 1. FDOT D4 System Analytics Group Updates**
 - UAB & FC Overview
 - UAB Modification Timeline
 - Resources
- 2. FHWA Guidance for UAB Smoothing**
- 3. D4 DRAFT Smoothed Urban Area Boundary**
 - Review
 - Discussion





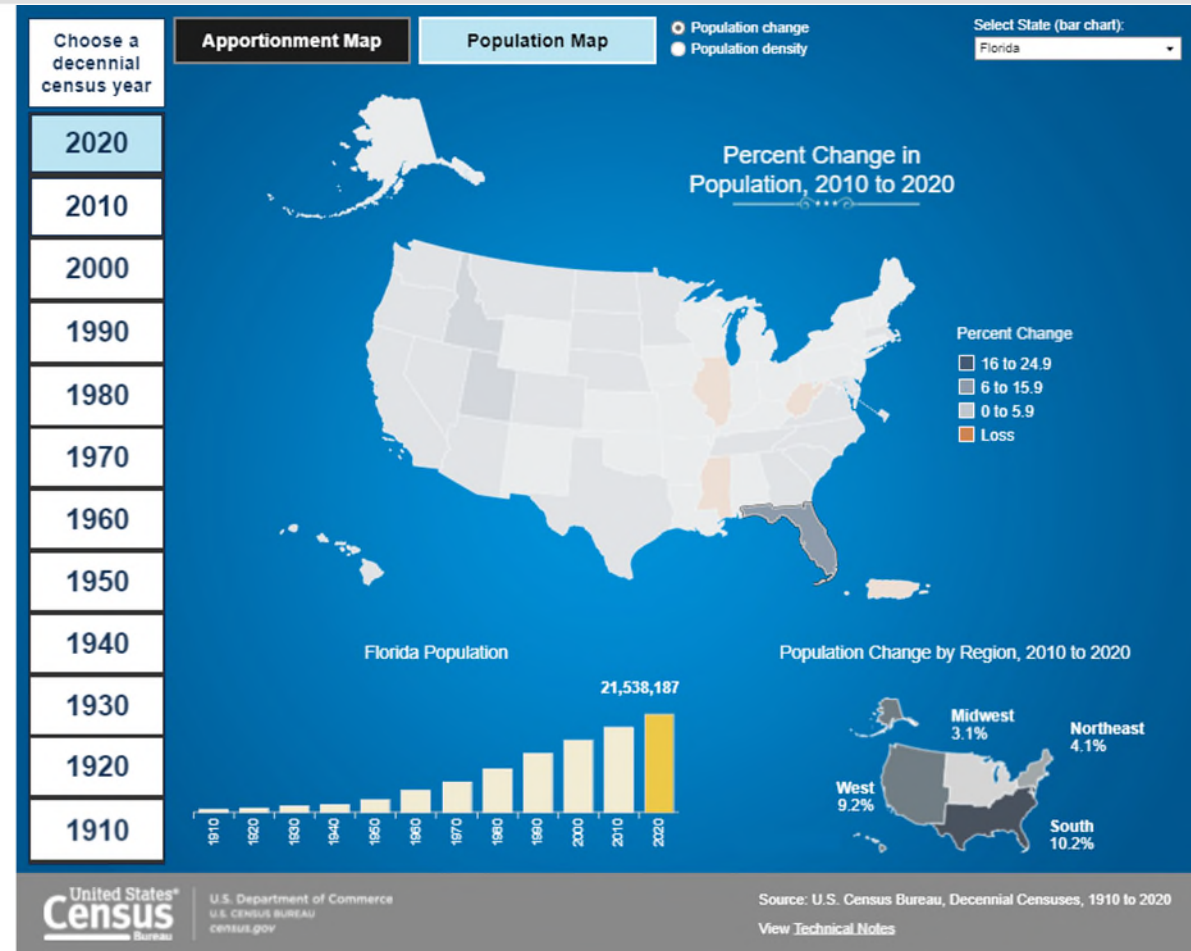
2020 Census Urban Boundary and Functional Classification Update

United States[®]
Census
2020

Urban Areas are revised every 10 years based on population counts from decennial census.

Urban Boundaries are adjusted to be consistent with transportation needs.

Functional Classification reviewed and updated in conjunction with adjusted urban boundaries.



Historical Apportionment Data Map (Interactive) (census.gov)





Final US Census Urban Area Criteria Highlights

- 2,000 housing units or 5,000 persons (2,500 persons in 2010).
- Census Block level instead of Track level designation.



Source Link: [Urban Area Criteria for the 2020 Census-Final Criteria](#)





Urban Area Boundary Adjustment FHWA Recommended Schedule

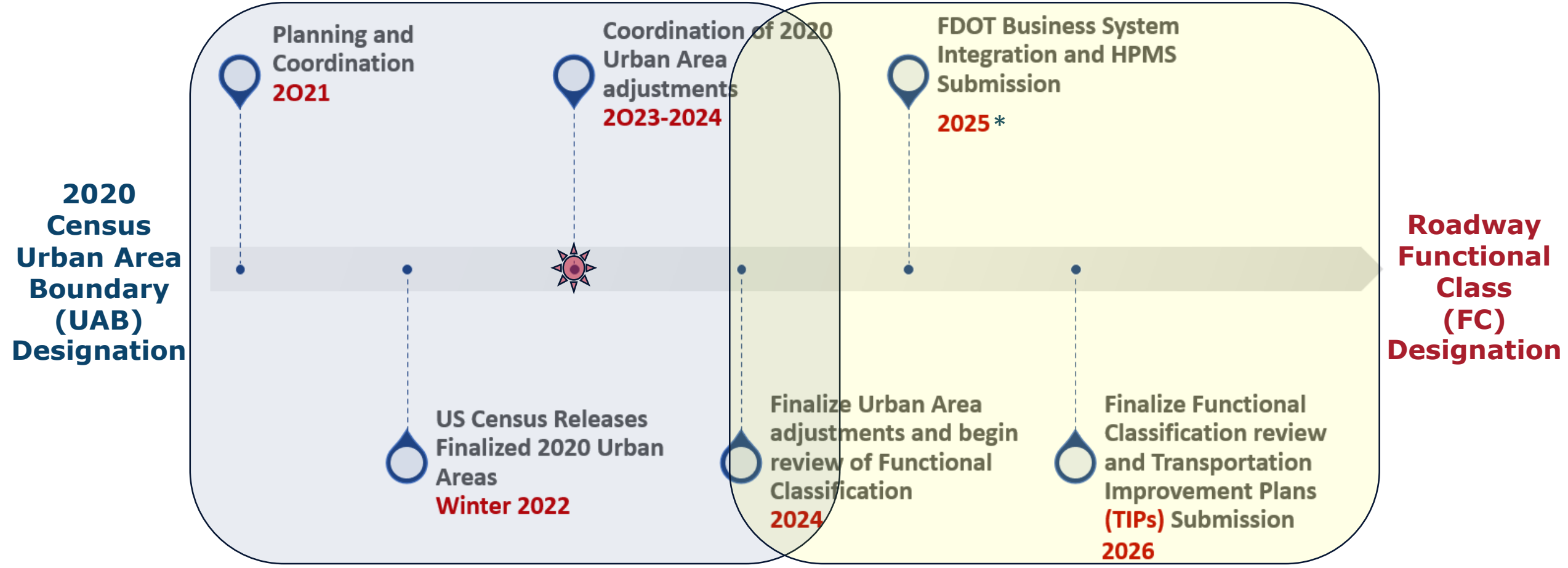
- Recommended 12-month schedule following Census release of Urban Area Boundaries.
- At a minimum – confirm Census boundaries are adequate.
- Build/share understanding of game plan.
- Generate maps and share electronically – **use GIS.**
- Encourage/work towards timely delivery of UB revisions.

Event	Months Following Release of 2020 Census Urban Area boundaries
FHWA issues transmittal letter	Month 1
Begin adjusted urban area boundary update process	Month 1
DOT works with planning partners to define adjusted urban area boundaries	Month 3-9
Provide draft final data and/or maps to FHWA Division Office for review	Month 10
DOT incorporates Review Comments	Month 11
DOT submits adjusted urban area boundaries to FHWA Office of Planning	Month 12





Tentative Timeline







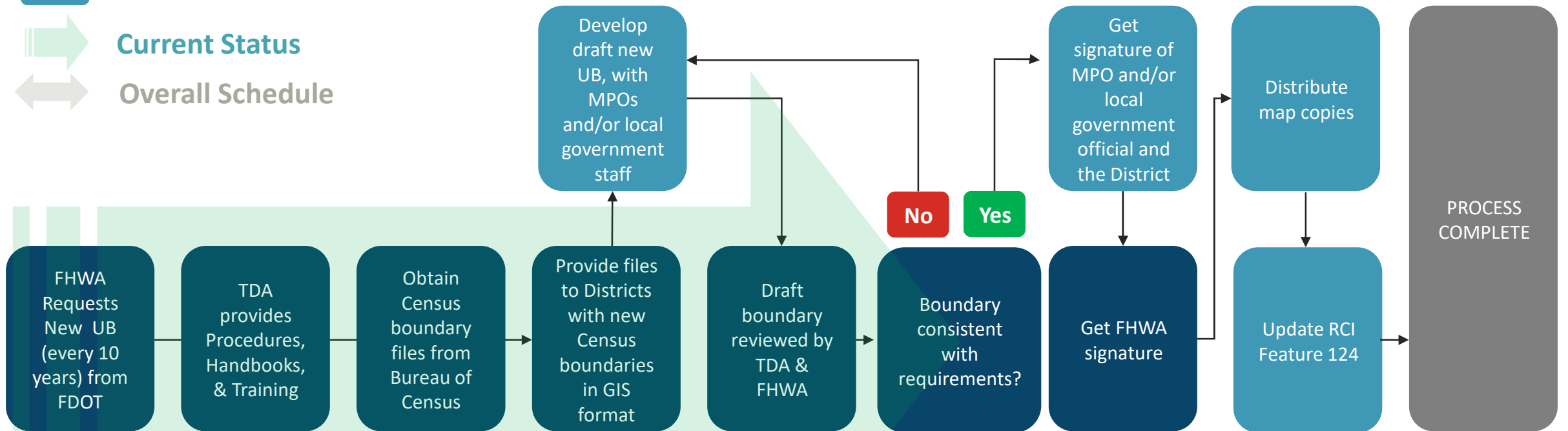
FHWA will ^{*}consider all **urban area boundaries final as of April 15, 2025**, and will use the original 2020 Census boundaries for all urban areas that have not been adjusted.





Urban Area Boundary Process Flow Chart

-  FDOT CO (TDA)
-  FDOT District 4
-  Current Status
-  Overall Schedule





FDOT Website Resources

UBFC Info Page:

<https://www.fdot.gov/statistics/hwsys/UBFC-update-process.shtm>

UBFC Data Hub (FDOT ArcGIS Online Account is Required to Upload a File)

<https://urban-boundary-functional-classification-2020-fdot.hub.arcgis.com/>

UBFC Story Map:

<https://storymaps.arcgis.com/stories/35c2943b23e64908b06dcedbb695c0ff>

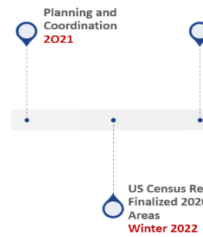
Resource Information

December 2022 is the estimated start date for State DOTs and MPOs to start adjusting these boundaries and to update functional classifications. The Census Bureau's final criteria for defining urban areas based on the results of the 2020 Decennial Census has been published. The Census is updating their Issues FAQs.

- 2010 Census Maps
- 2013 Functional Classification Guidance
- 2013 FHWA Edition - Highway Functional Classification Concepts, Criteria and Procedures
- 2020 Estimated Schedule of Activities
- 2020 Final Urban Area Criteria
- Census Frequently Asked Questions
- Metropolitan Planning Program Staff (District MPO Liaisons) - PDF
- Urban Areas for the 2020 Census
- Urban Boundary and Functional Classification Handbook
- Urban Boundary and Functional Classification Procedure (525-020-311)



Timeline






FHWA Guidance for UAB Smoothing



Census Urban Area Boundaries – Important Facts

- Urban and rural demarcation defined by function not urban area boundary.
- Area must encompass Census Bureau urban area, at a minimum.

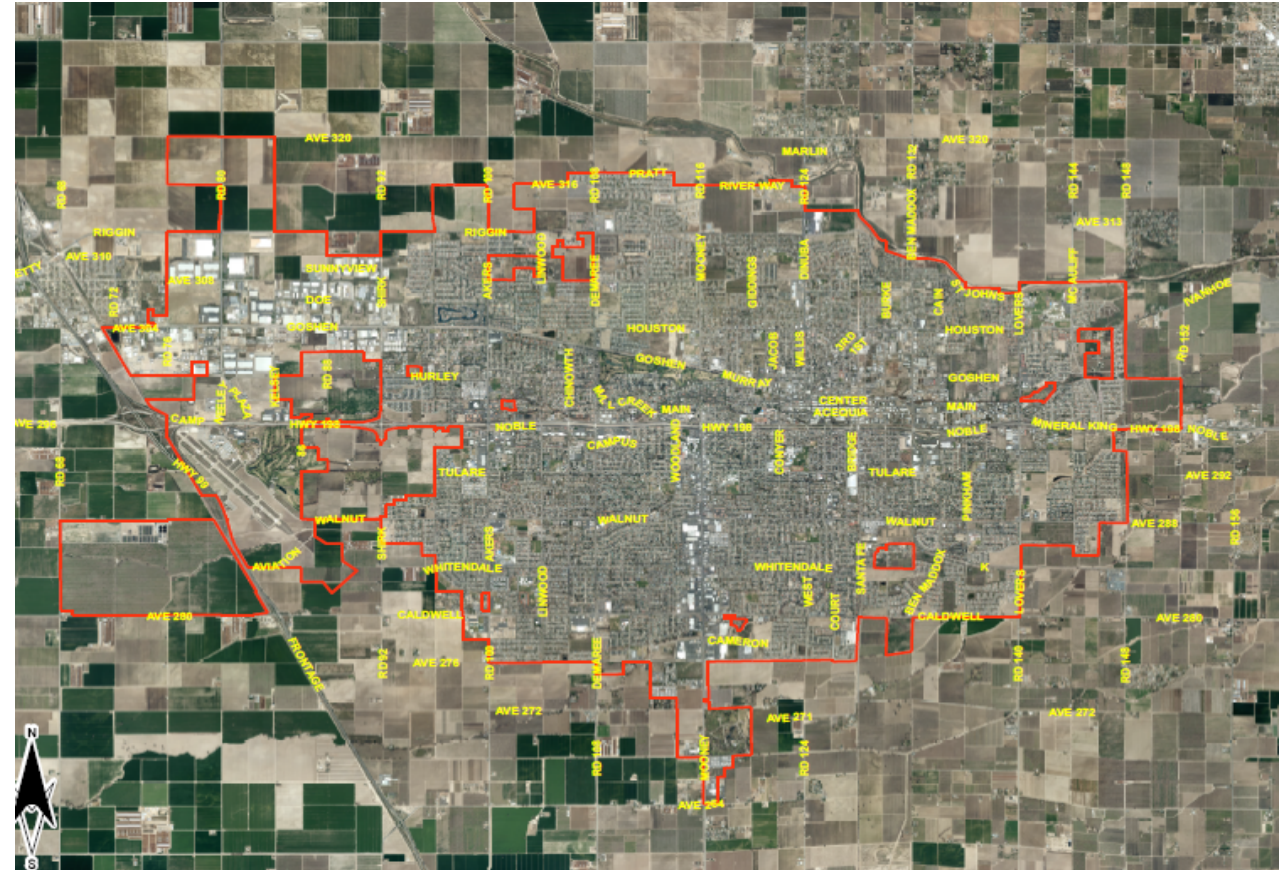
Note: States and MPOs may choose not to adjust the Census urban boundaries.





Census Urban Area Boundaries – Adjustment Considerations

- Include entire municipality.
- Include areas with urban characteristics.
- Boundary should be easy to discern.
- Boundaries should not split roadways or ramps.





Adjustment Considerations continued

- Boundaries should encompass the entire Census Bureau urban area.
- Boundaries should be one contiguous area.
- Boundaries should be simple, without irregularities.
- Boundaries should follow municipal boundaries or other physical features.
- Boundaries should include areas with urban characteristics, such as airports, industrial areas, transportation terminals, major activity centers, etc.

Reference:

https://www.fhwa.dot.gov/planning/processes/statewide/related/highway_functional_classifications/fcauab.pdf

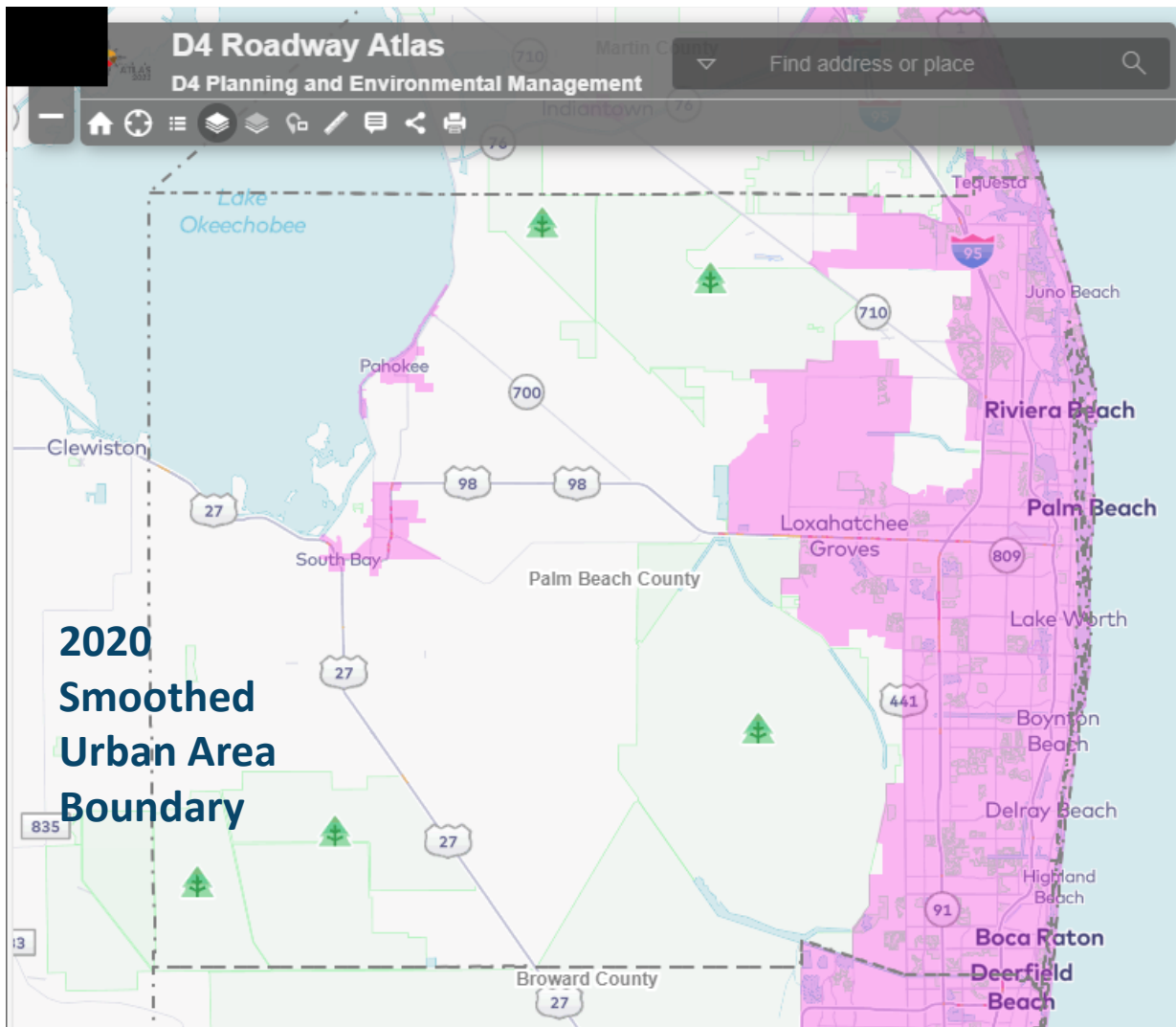
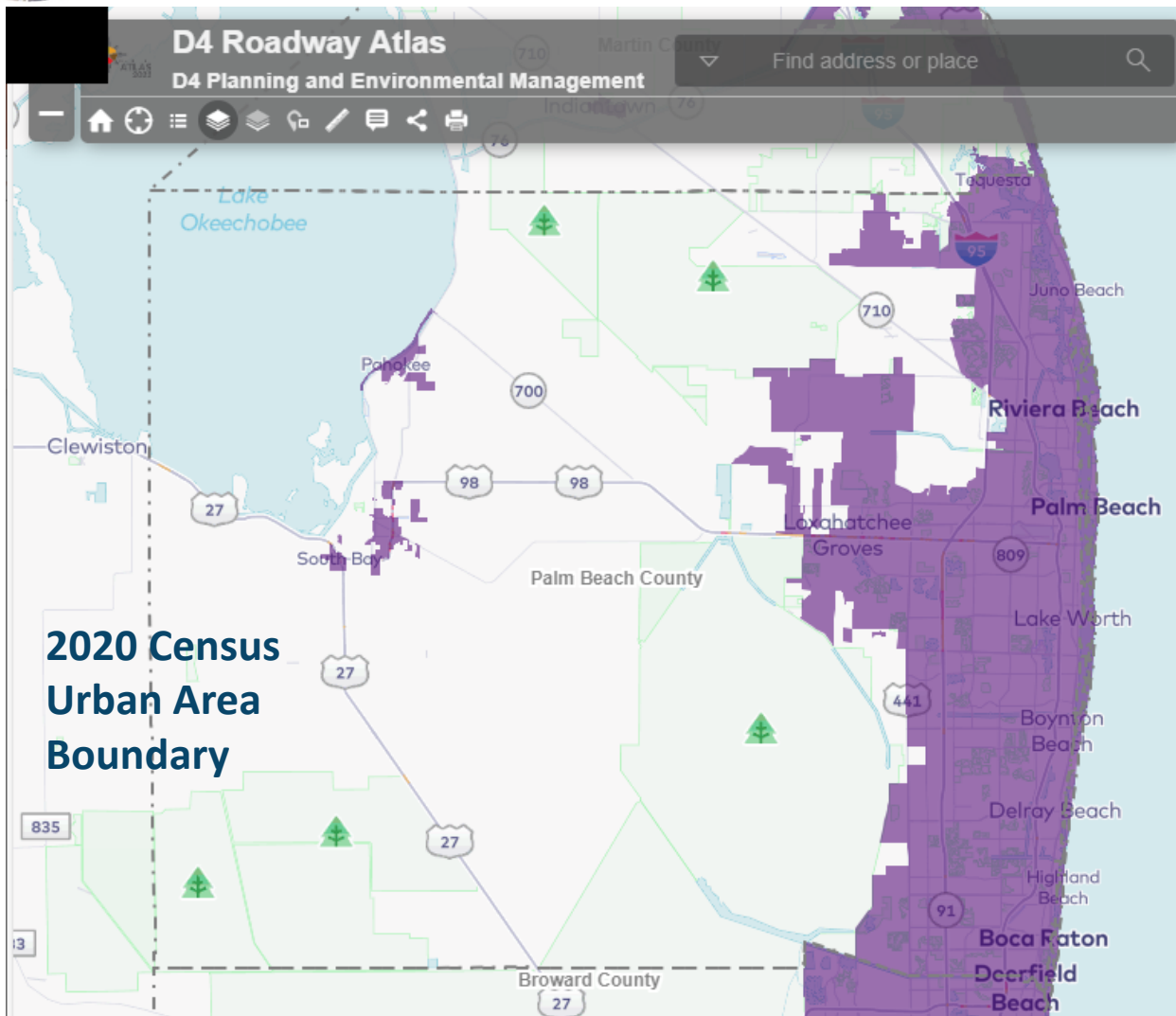




D4 DRAFT Smoothed UAB



UAB – Palm Beach County



D4 Data Link: [FDOT District Four Roadway Atlas Viewer \(2022\)](#)





Questions

Raj Shanmugam, P.E.
System Analytics Group Supervisor
FDOT-D4, Planning & Environmental Management
Tel: 954-777-4655
E-mail: Raj.Shanmugam@dot.state.fl.us

Christine Fasiska, P.E.
Transportation Planning Manager
FDOT-D4, Planning & Environmental Management
Tel: 954-777-4480
E-mail: Christine.Fasiska@dot.state.fl.us

Jeannelia Liu, P.E.
Senior Project Manager
CALTRAN Engineering Group
Tel: 786-456-7700
E-mail: JLiu@caltrangroup.com

