



1

## Tri-Rail / SFRC

- 73.4 mile system
- 18 stations
- Weekday service
  - 50 trains per day
  - Peak 20 & 30 minutes
  - Off Peak every 60 minutes
  - ~12,000 passengers/weekday
- Weekend service
  - 30 trains per day
  - ~ 5,500 passengers/weekend

**SYSTEM MAP BY ZONE**  
**MAPA DEL SISTEMA POR ZONA**  
**MAP SISTÈM YO PA ZÒN**

- Tri-Rail Station
- Metrorail Transfer Station
- Metrorail
- ✈ International Airport

**Stations (from north to south):**

- Mangonia Park Station
- West Palm Beach Station
- Lake Worth Station
- Boynton Beach Station
- Delray Beach Station
- Boca Raton Station
- Deerfield Beach Station
- Pompano Beach Station
- Cypress Creek Station
- Ft. Lauderdale Station
- Ft. Lauderdale/Hollywood International Airport Station at Dania Beach
- Sheridan Street Station
- Hollywood Station
- Golden Glades Station
- Opa-locka Station
- Metrorail Transfer Station
- Hialeah Market Station
- Miami Airport Station

**Counties:** Palm Beach County, Broward County, Broward County, Miami-Dade County

2

# Need for Project



## Existing West Palm Beach Layover Facility is:

- Too small (less than one acre)
  - Unable to fit 4-car train sets
- Unable to fit more train sets
  - Needed for future system expansion
- Four miles south of Mangonia Park – northern terminal
  - Requires inefficient non-revenue trips



3

3

# New Northern Layover Facility



- More efficient end-of-line location
  - Minimizes non-revenue movements
  - Reduces idling at Mangonia Park Station
- Adds greatly needed train storage capacity
  - Existing Tri-Rail system
  - Planned Future Expansions
- Federal environmental clearance received
  - FTA Documented Categorical Exclusion, 2013

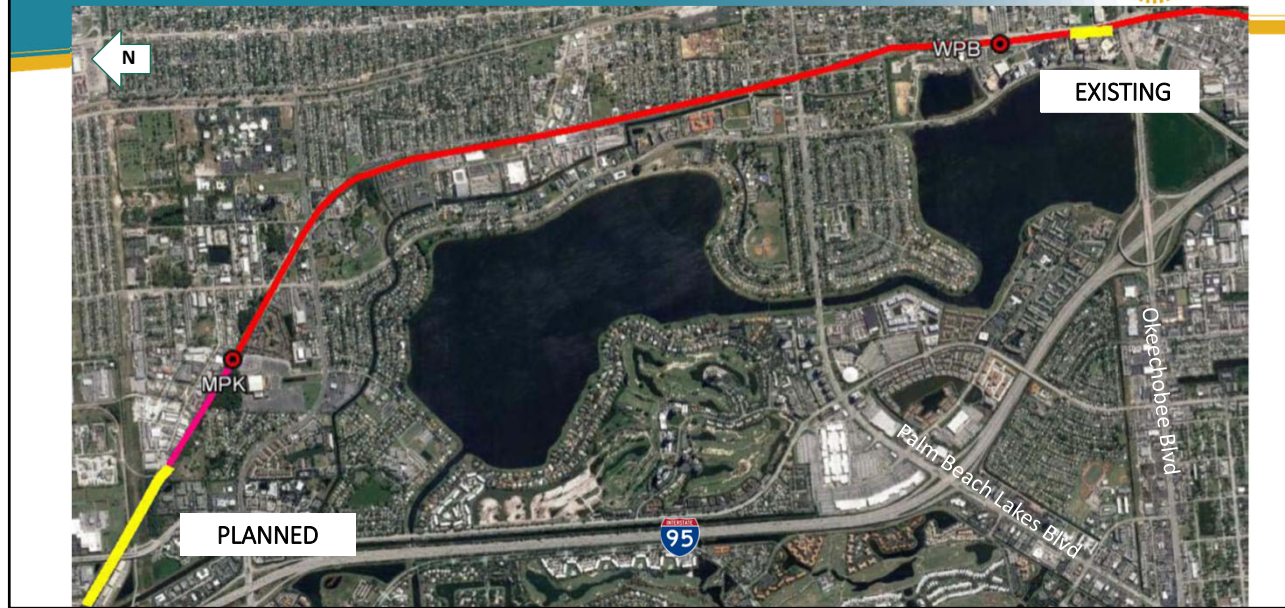


4

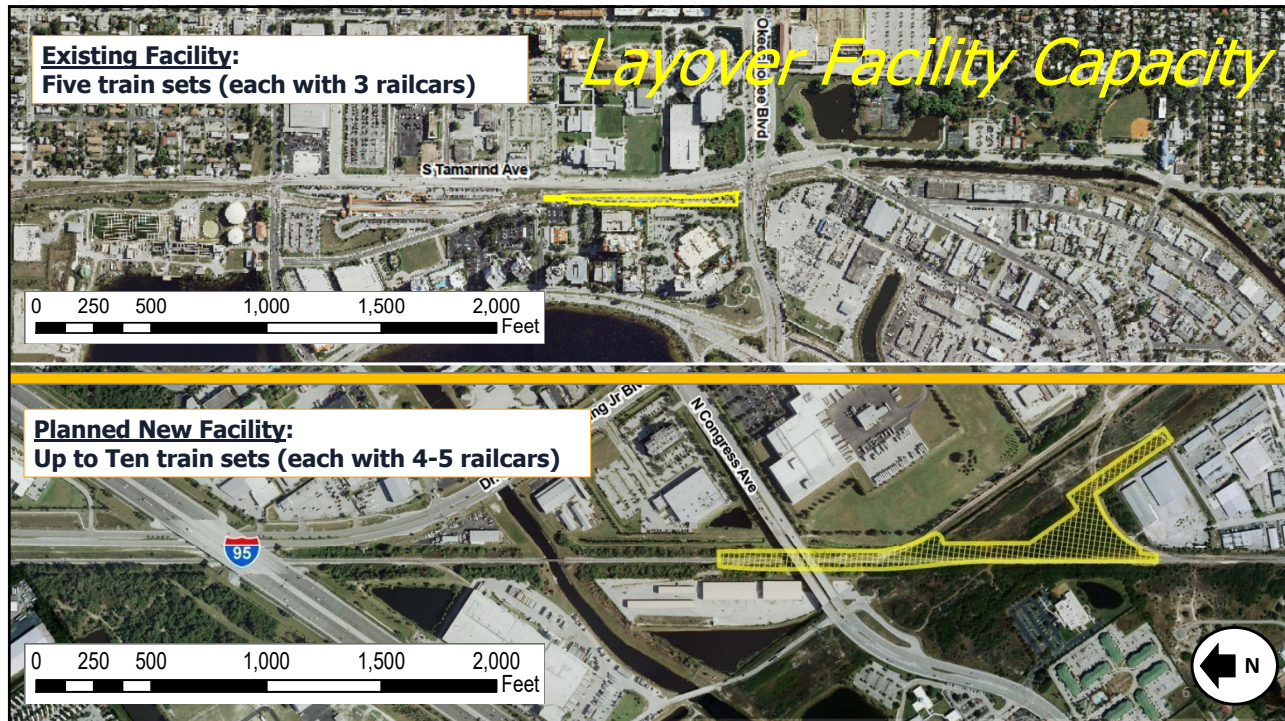
4



# Existing and Planned Layover Locations



5



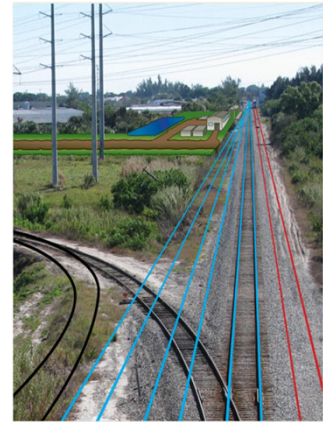
6



# New Layover Facility Elements

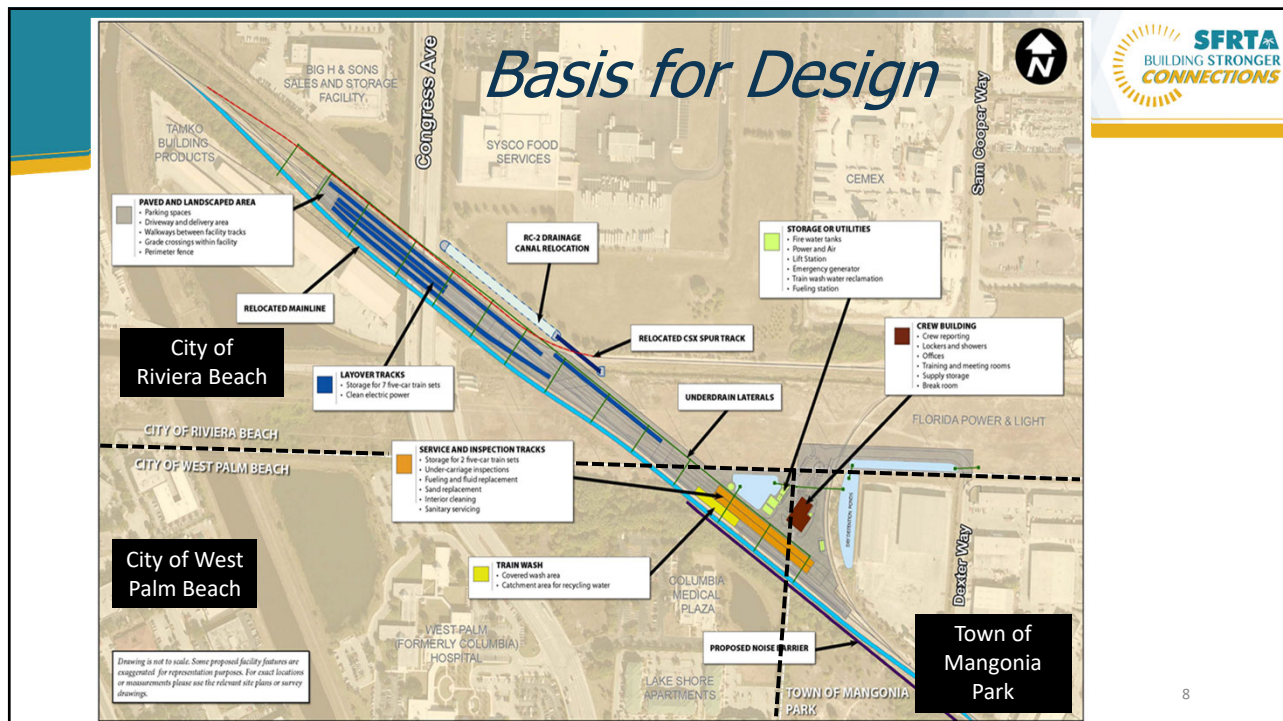


- Layover tracks with wayside power capabilities
- Larger crew building and warehouse space
- Enclosed train wash (on exit)
- Service and inspection area
- Noise wall/barrier
- Backup generator
- Security fencing around facility
- Access driveway w/automated entry gate



7

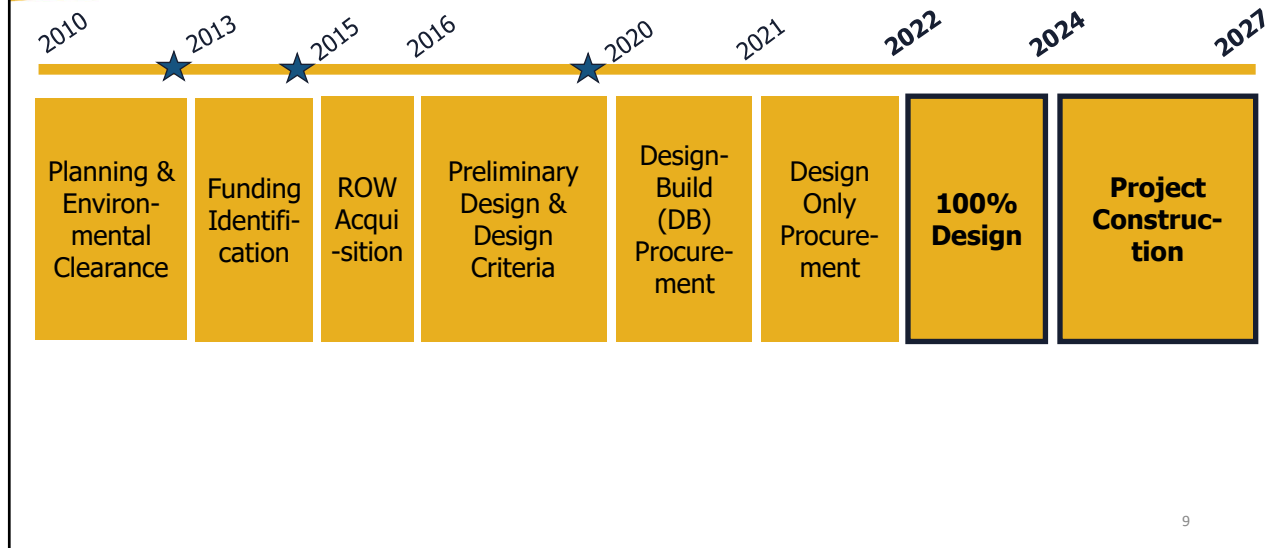
7



8

8

# Project Timeline



9

# Project Financial Information



- Total Project Cost = \$45.5 M
- Funding Sources:
  - Federal/Palm Beach TPA = \$39.6 M
  - State/FDOT = \$5.9 M
- Project Costs by Phase:

NEPA/ROW	Design	CEI	Construction
\$1.5 M	\$4.0 M	\$4.0 M	\$36.0 M

10

10

# Questions?



*Loraine Cargill, AICP*  
Director of Strategic Planning  
[cargill@sfrta.fl.gov](mailto:cargill@sfrta.fl.gov)

