



1

The slide features a blue header bar with a white graphic of three horizontal lines on the left. The text "Obligation Report Definitions" is written in white on the blue background. Below the header, the slide contains a bulleted list of three items.

- **Transportation Improvement Program (TIP)** – Intent to spend funds from specific sources on a project; allows for FHWA/FTA applications
- **Obligations** – FHWA/FTA commitment to reimburse up to this amount for a specific project
- **Deobligation** – Applicant request to reduce obligated funds (based on projected remaining cost at or near close out)

2

## Why do FHWA approved obligations not match TIP programmed amounts?

- Project phases may not have been completed and moved to the current fiscal year (2023)
- FDOT swaps state/federal funds within a project
- Florida uses state funds to oversubscribe to federal aid programs and increase statewide totals each year

3

## FDOT uses state funds to oversubscribe to federal aid programs

FM No.	Location	Description	Phase	FY 22 TIP Request	FY 22 Obligations	Funding Remaining
4124204	I-95 AT GLADES RD/SR-808	Construct separated auxiliary lanes	CST	\$0	\$6,966,447	(\$6,966,447)

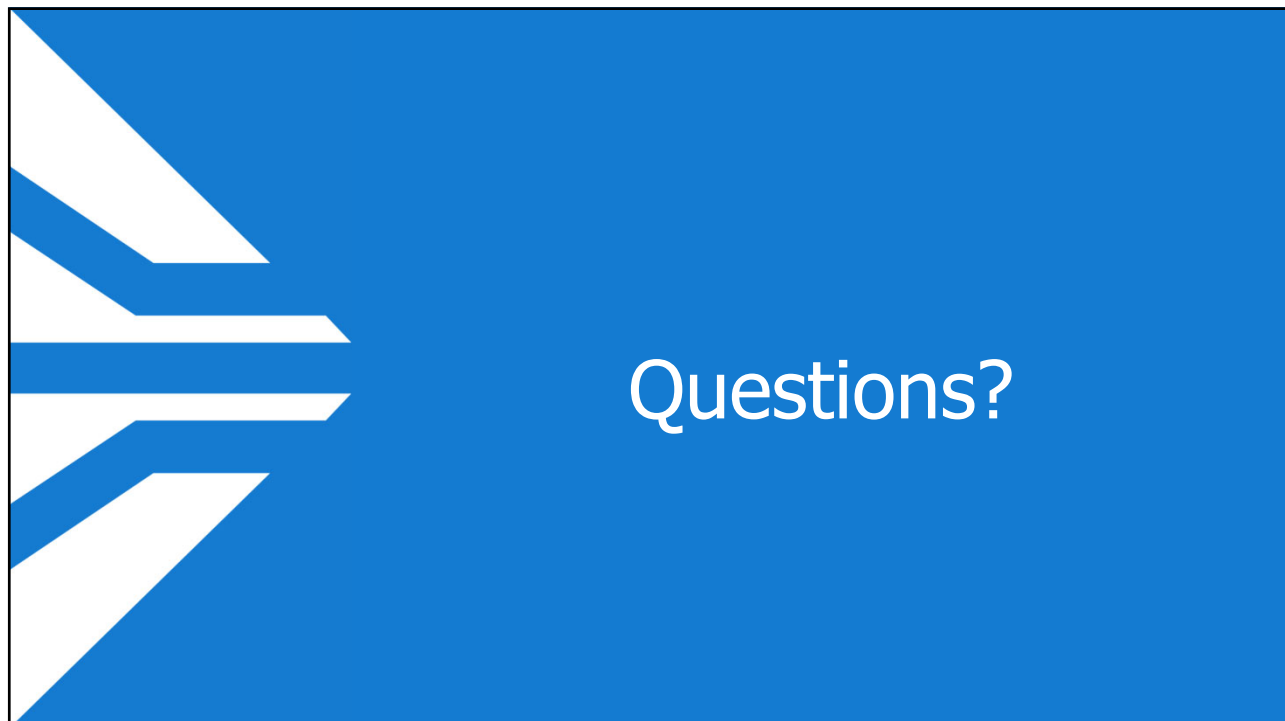
- In FY 2019, \$28 M was programmed using state Advanced Construction funds (ACNP)
- In FY 2022, FDOT was able to reimburse some of these expenditures with federal dollars (NHPP)

5

## Fiscal Year 2022 FHWA Programmed, Obligated, and De-Obligated Amounts

Transportation Improvement Program Section	Programmed in TIP	Obligated	De-Obligated	Funds Remaining
SIS Capacity	115,398,396	18,210,347	(204,126)	97,392,175
State Road Modifications	43,625,208	8,533,687		35,091,521
Local Initiatives Program	23,096,751	15,835,728	(1,294,053)	8,555,076
Transportation Alternatives Program	4,225,700	3,315,348	(92,708)	1,003,060
Other FDOT & Local Projects	6,670,800	7,406,900	(803,990)	67,890
Major Maintenance	8,806,620	4,492,266	(392,427)	4,706,781
O&M - Roadways	5,000	15,224,456	(59,908)	(15,159,548)
O&M - Transit	24,700,112	6,160,104		18,540,008
Railroads	16,350,000	1,086,447	(27,667)	15,291,220
<b>Total</b>	<b>242,878,587</b>	<b>80,265,283</b>	<b>(2,874,879)</b>	<b>165,488,183</b>

6



7