

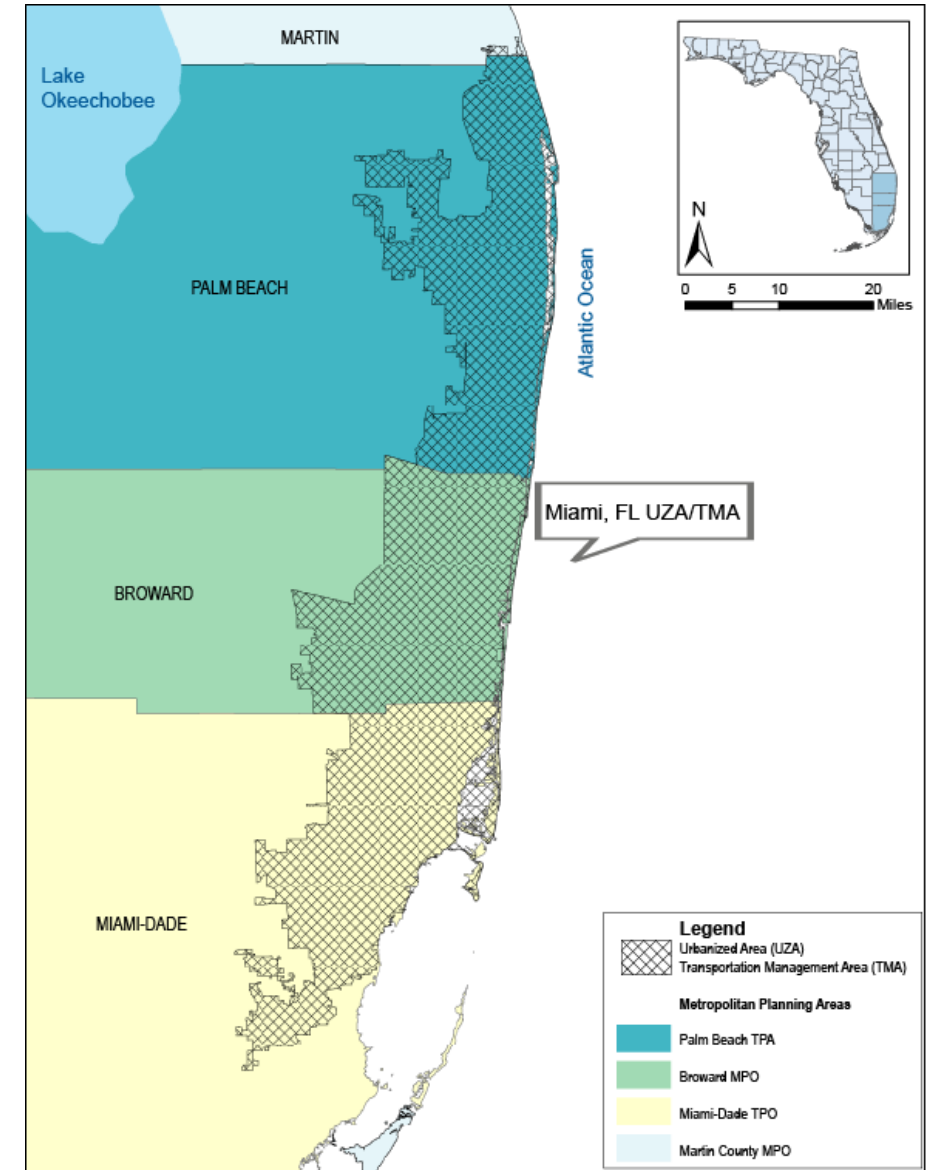
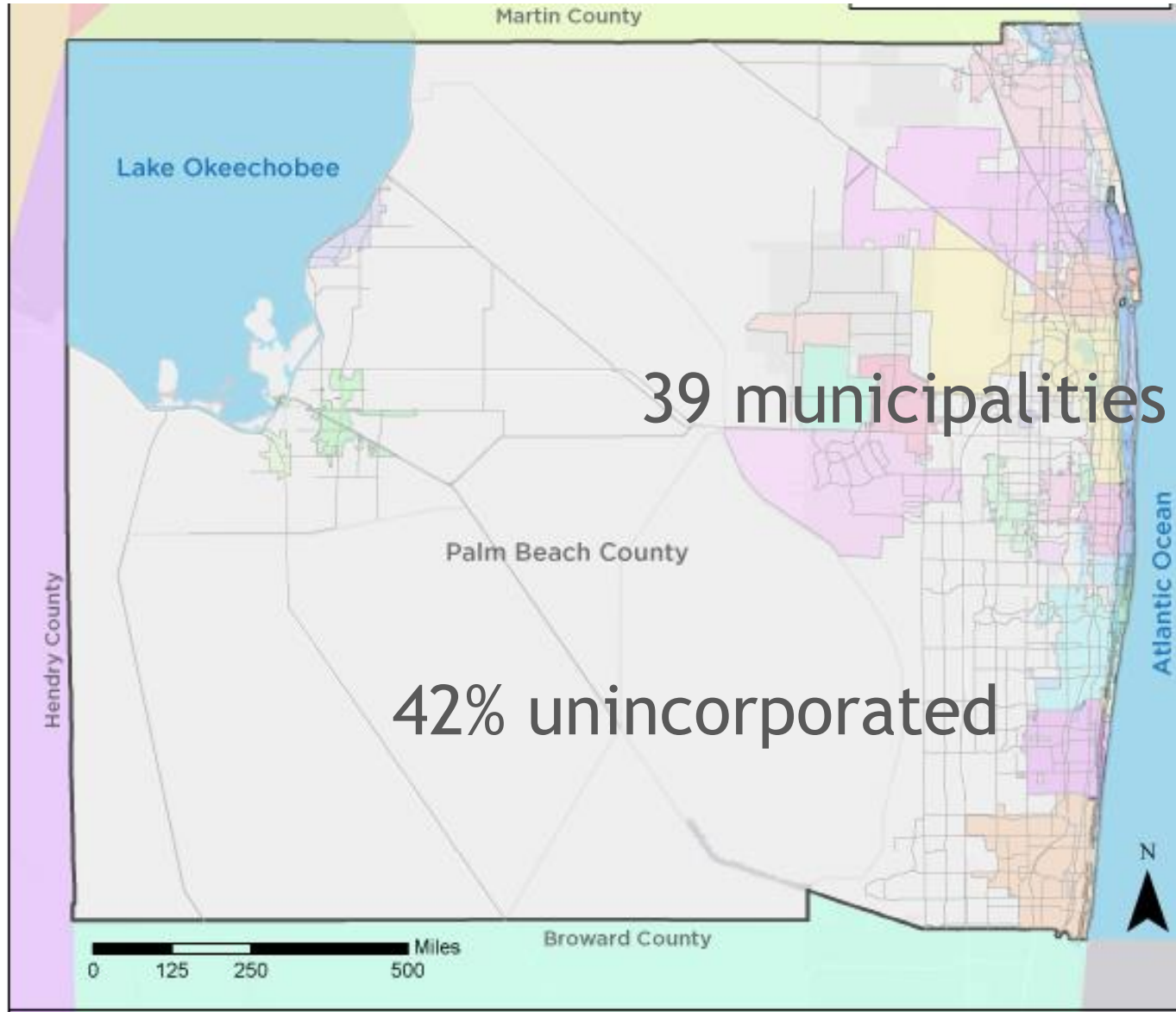


# TPA Overview

including changes within TPA  
since last TMA Certification



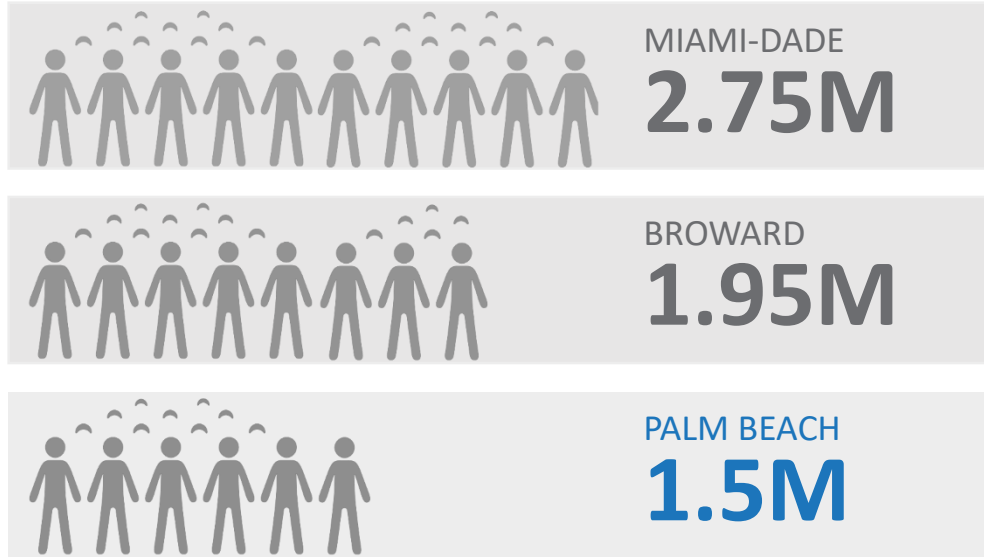
# Planning Area





# Demographics

2017 REGIONAL  
POPULATION  
**6.2M**  
+600,000  
since 2010



**2.18 MILLION**  
PEOPLE WORK IN SOUTHEAST FLORIDA  
**513 THOUSAND**  
PEOPLE WORK IN PALM BEACH COUNTY



**45.2%**  
OF RESIDENTS ARE  
MINORITY



**24.6%**  
OF RESIDENTS ARE  
FOREIGN  
BORN



**31.1%**  
OF RESIDENTS SPEAK  
OTHER  
LANGUAGE  
AT HOME



**6.5%**  
OF RESIDENTS WITH  
LIMITED  
ENGLISH  
PROFICIENCY



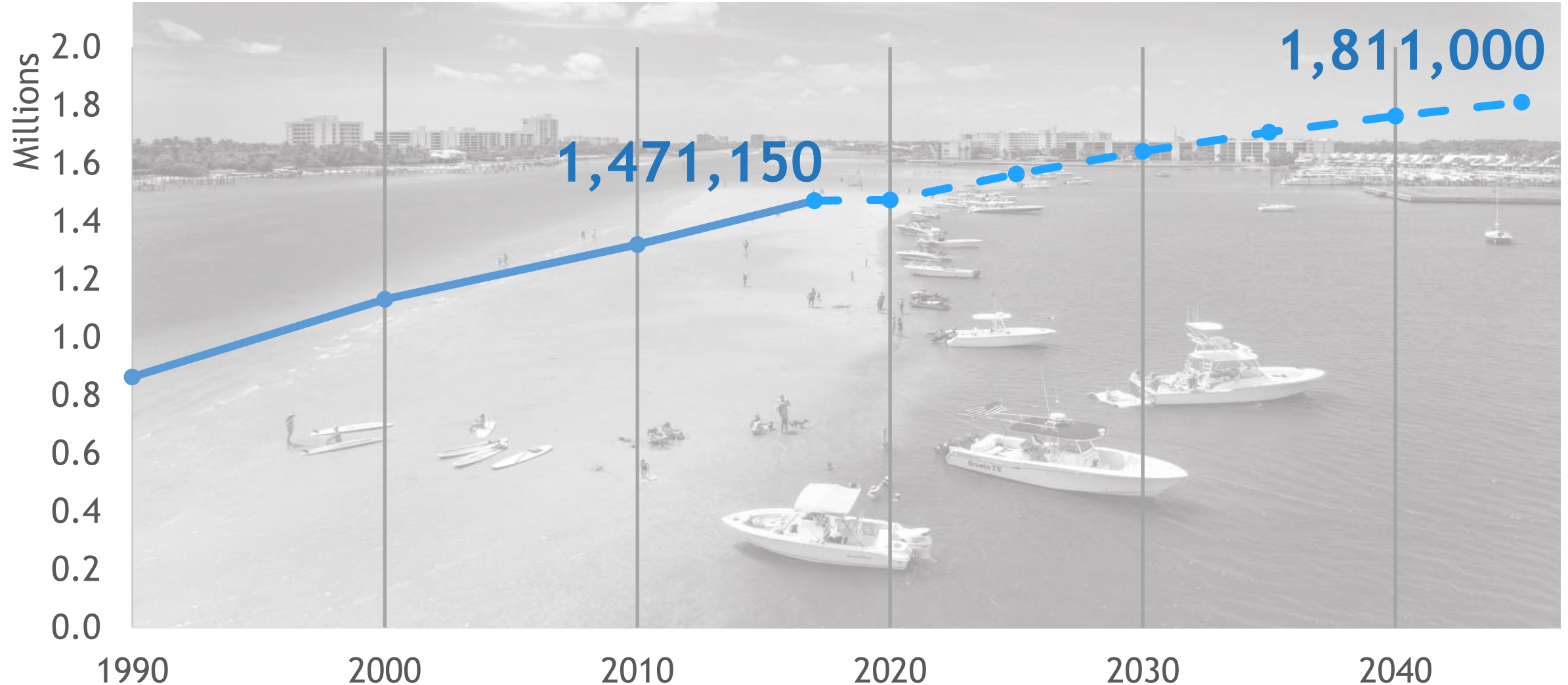
**20.3%**  
OF RESIDENTS ARE  
UNDER 18



**18.6%**  
OF RESIDENTS ARE  
OVER 65



# Countywide Population Growth Trend



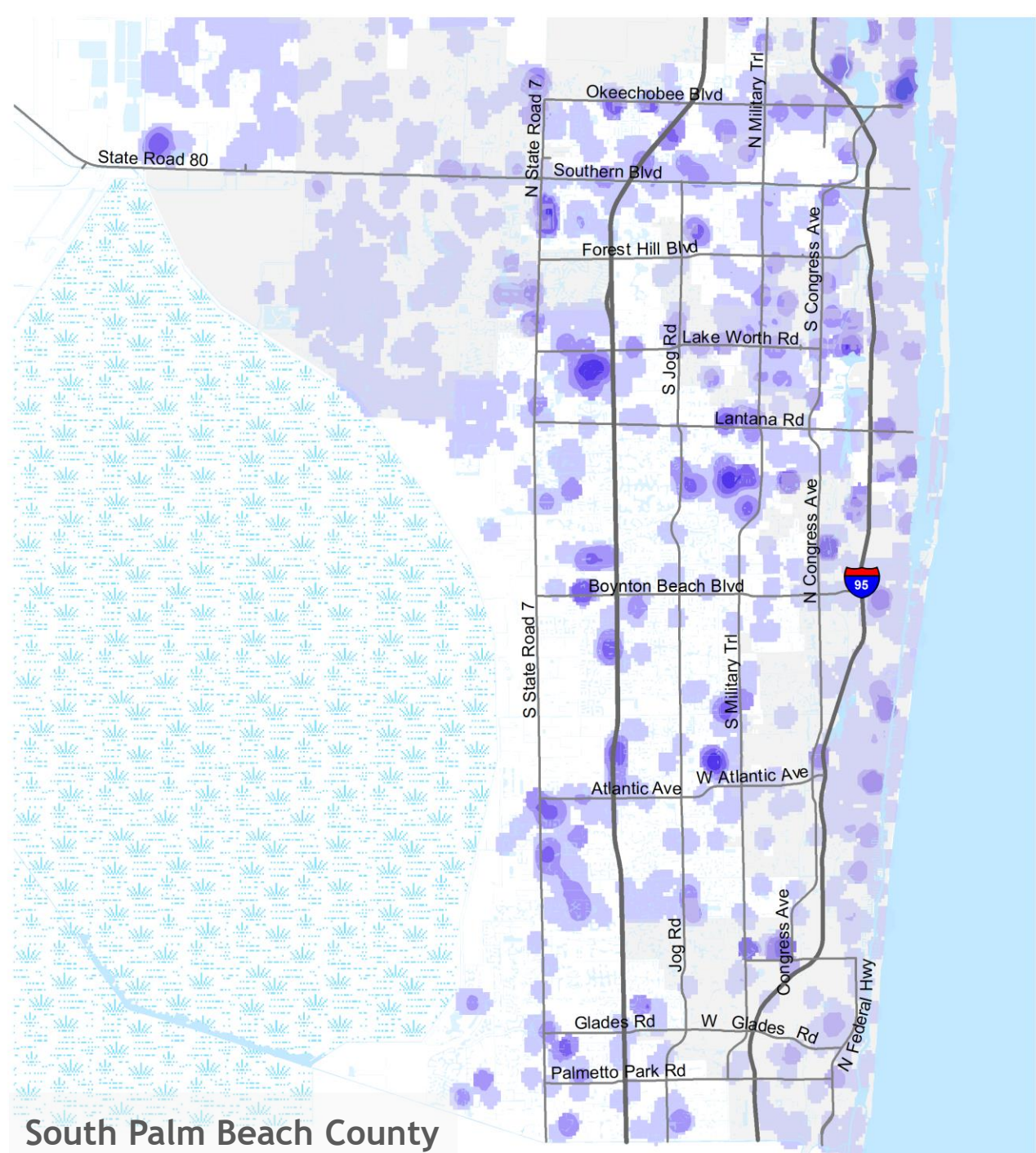
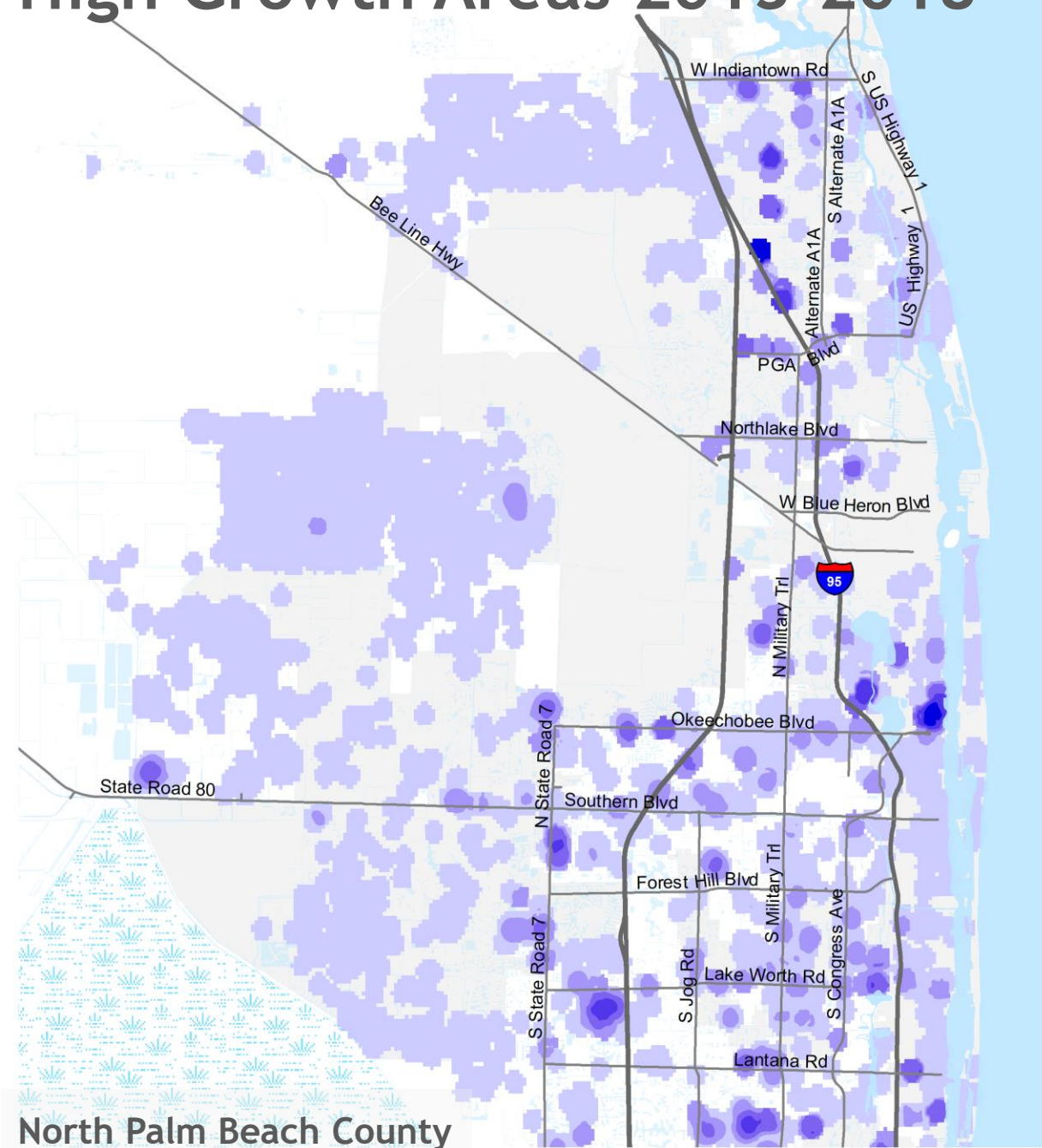


# Population by City/Unincorporated Area

West Palm Beach	112,906	North Palm Beach	12,596	Mangonia Park	2,045
Boca Raton	93,417	Lantana	11,397	Atlantis	2,021
Boynton Beach	76,756	Lake Park	8,829	Ocean Ridge	1,827
Delray Beach	66,580	Palm Beach	8,295	South Palm Beach	1,400
Wellington	62,304	Pahokee	5,909	Palm Beach Shores	1,217
Jupiter	62,100	Tequesta	5,857	Gulf Stream	1,005
Palm Beach Gardens	53,800	South Bay	5,174	Briny Breezes	610
Greenacres	39,568	Highland Beach	3,654	Manalapan	425
Lake Worth Beach	38,257	Juno Beach	3,427	Jupiter Inlet Colony	409
Royal Palm Beach	37,934	Lake Clarke Shores	3,422	Golf	257
Riviera Beach	35,431	Loxahatchee Groves	3,384	Glen Ridge	223
Palm Springs	23,448	Hypoluxo	2,741	Cloud Lake	137
Belle Glade	17,589	Haverhill	2,096	Westlake *new 2016*	29
		Unincorporated Area		624,941	



# High Growth Areas 2013-2018







# Community Profiles

## Demographics, transportation facilities, projects

