



Outreach and Public Participation

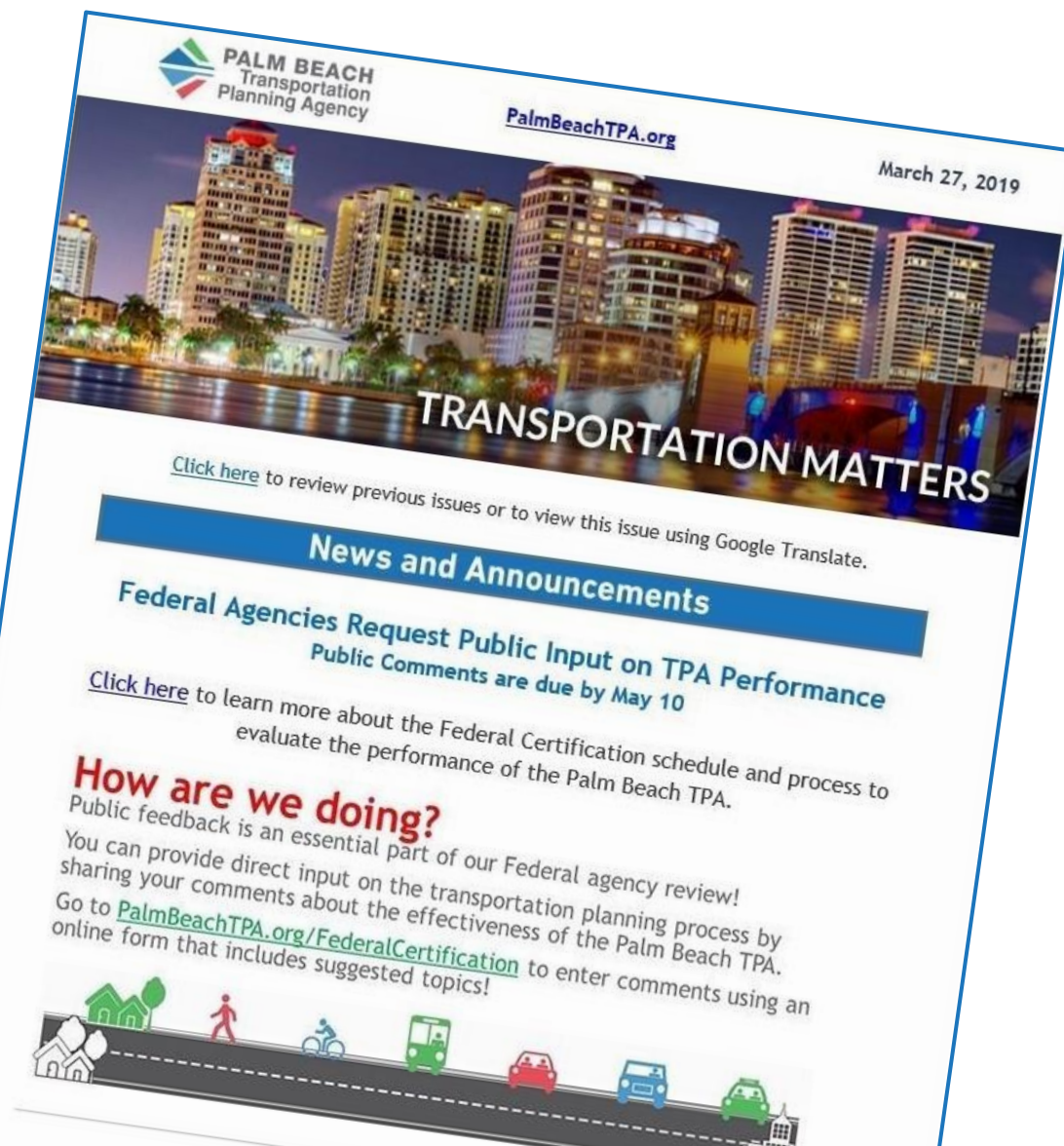


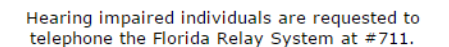
Expand Public Participation

E-Newsletter

Social Media

LRTP Survey







Current Website, Launched Oct. 2015



PALM BEACH
Transportation
Planning Agency

Connecting Communities

A A A
Powered by Google Translate

THE TPA

BOARDS & COMMITTEES

FUNDING

PLANS & RESOURCES

TRAVEL MODES & FACILITIES

PUBLIC INVOLVEMENT

CONTACT US

MISSION
To collaboratively plan, prioritize, and fund the transportation system

VISION
A safe, efficient, and connected multimodal transportation system

FIND WHAT YOU'RE LOOKING FOR HERE...



BIKEPALMBEACH.ORG



CALENDAR



MEETINGS



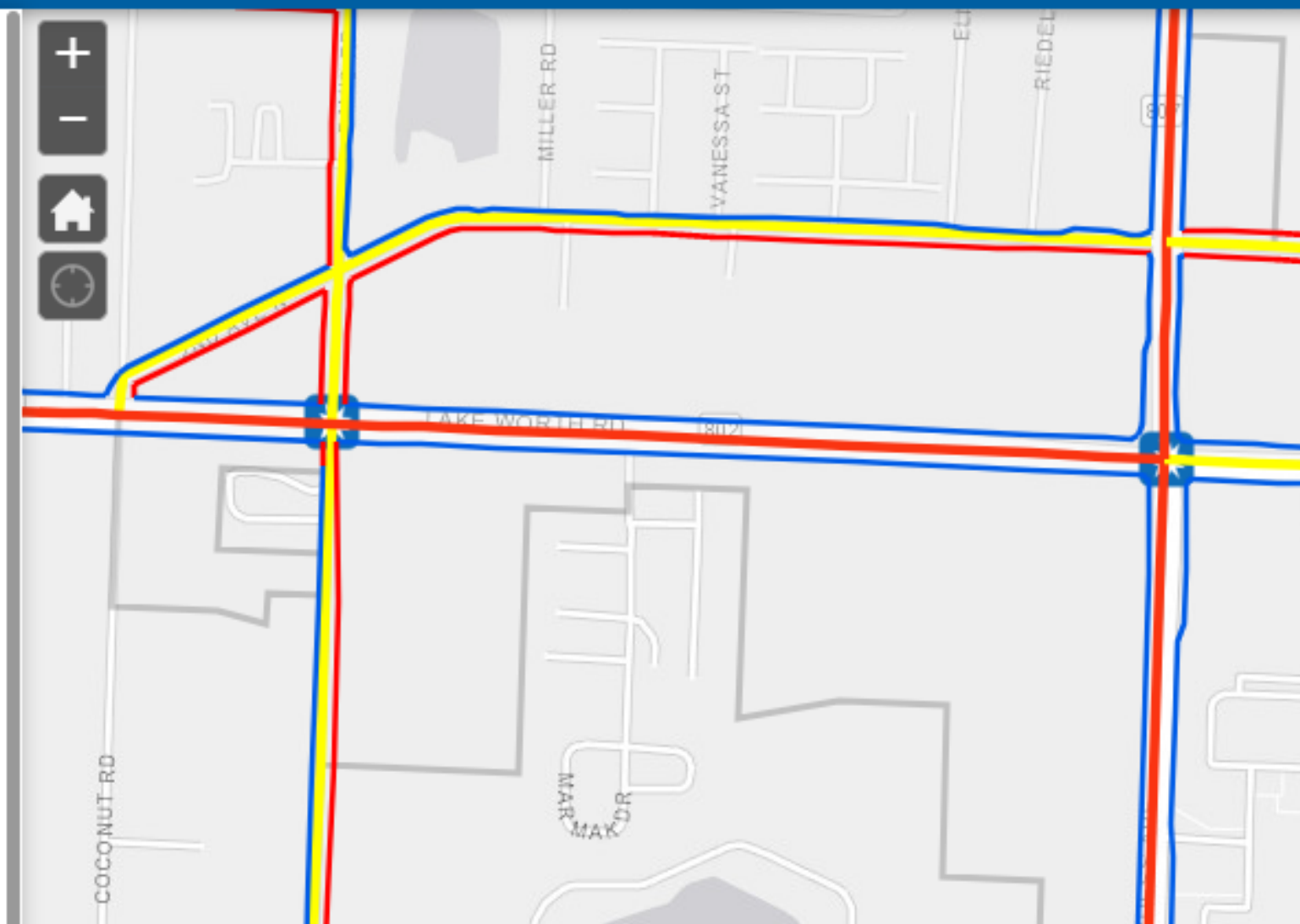
Interactive Maps with Layers



TPA Mapping

Layers

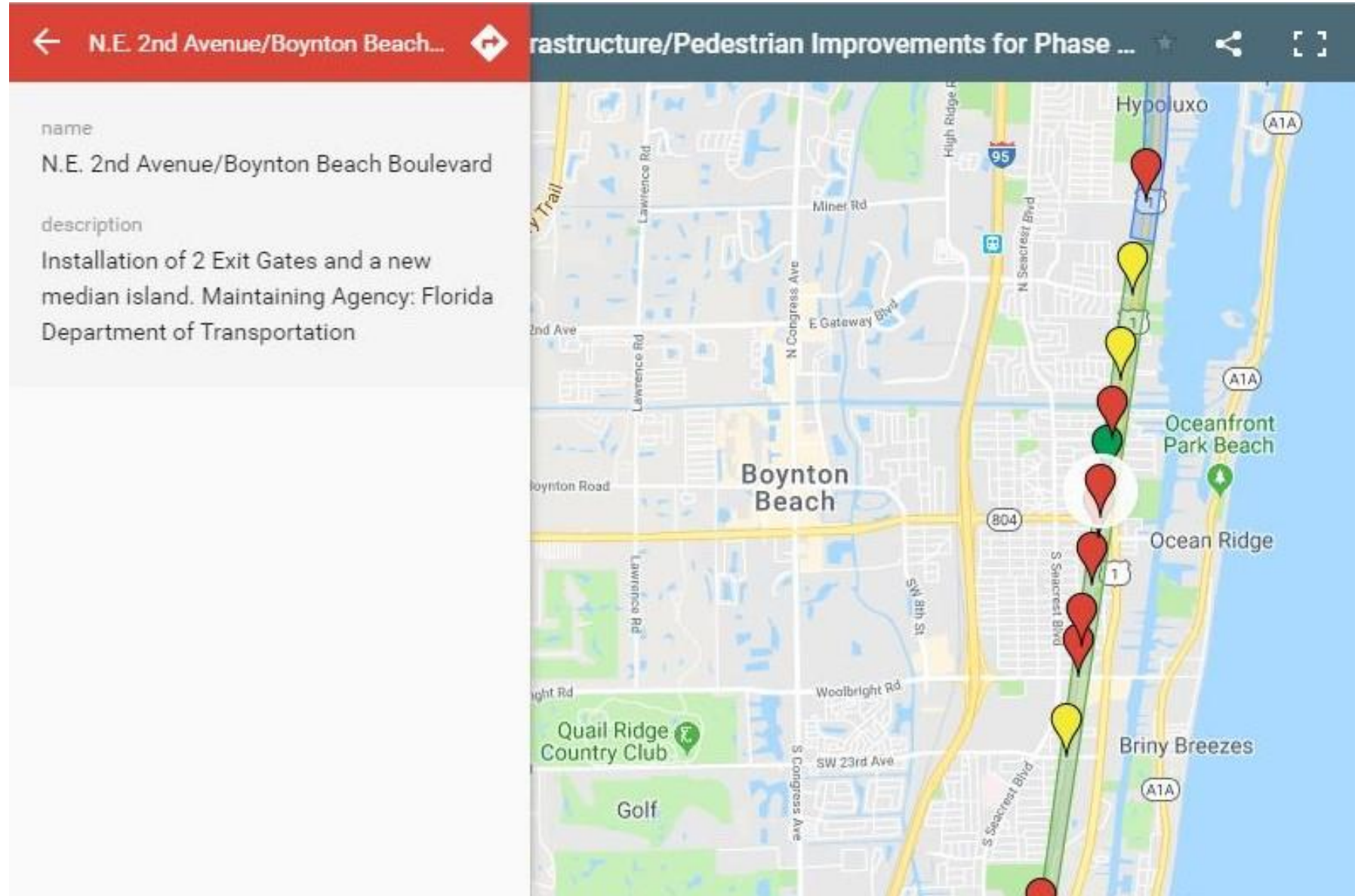
- ▶ ☒ Pedestrian Facilities ...
- ▶ ☐ Bicycle Facility Network Type ...
- ▶ ☒ Bicycle Suitability Network ...
- ▶ ☐ Designated Truck Routes ...
- ▶ ☒ Ped Bike High Crash Intersections ...
- ▶ ☐ Palm Tran Bus Stops ...
- ▶ ☐ Palm Tran Bus Routes ...
- ▶ ☐ Schools ...
- ▶ ☐ Median Household Income v. County Average ...





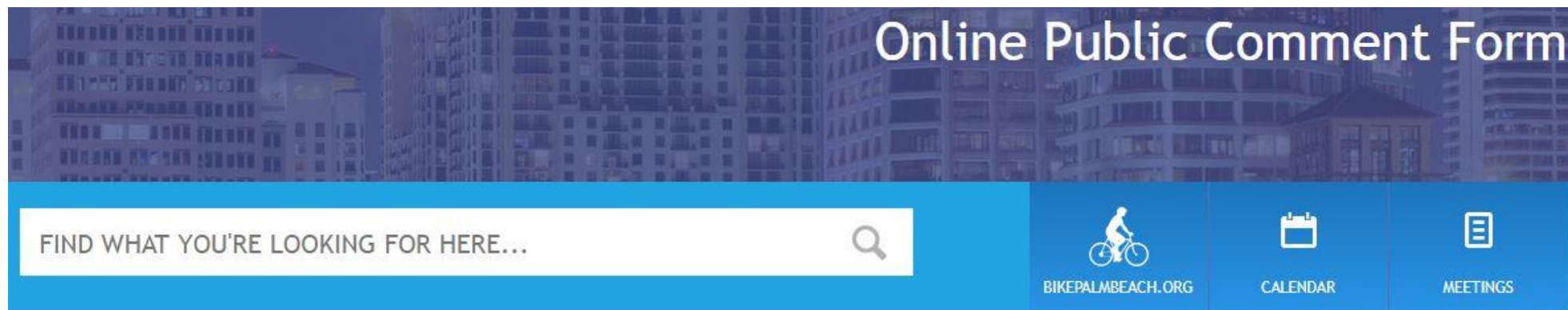
Interactive Maps - Rail

- TPA Funded Rail Safety Infrastructure and Pedestrian Improvements
- FEC Corridor Quiet Zones





Online Public Comment Forms



ONLINE PUBLIC COMMENT FORM › FEDERAL CERTIFICATION OF THE PALM BEACH TPA

Please provide feedback regarding any of the suggested topics below, or any other aspect of transportation planning, project prioritization, facilities and services in Palm Beach County and southeast Florida. Please include sufficient details including the city to identify any referenced project locations or the names of any transit services mentioned in the comments.

Suggested topics:

- Effectiveness of the Palm Beach TPA's outreach strategies and opportunities for public participation during decision making points in the process (meeting notifications, website, e-newsletters, social media, special events, etc.)
- Palm Beach TPA process to determine priorities for project funding including opportunities for public input
- Equity and nondiscrimination in transportation planning and project funding by the Palm Beach TPA or by other transportation planning agencies or service providers
- Planning process and public outreach specifically for transit services (buses, trains, trolleys) and for paratransit to serve those who are disabled or transportation disadvantaged
- Pedestrian and bicycle facilities planning processes
- Other aspects of the Palm Beach TPA or local transportation planning

First Name (optional):

Last Name (optional):

Address (optional):



Online Public Comment Form Responses

To Malissa Booth S.

Action Items

+ Get more



PALM BEACH
Transportation
Planning Agency

Dear Administrator,

Please see below for the details of the "Federal Certification of the Palm Beach TPA" form completed on "Palm Beach TPA".

State (optional):

Florida

Email:

erika846@hotmail.com

Comment / Feedback:

Try adding routes that people can use in a reasonable amount of time. It takes hours to go a few miles, because the routes are not convenient. Try educating the public on road rules! when to cross at a crosswalk, how to push the pedestrian signal button, right turn on a solid green does not have the right of way over a pedestrian. U-turn has to yield to right turns. Why not get the news to do a nightly segment on driving rules and laws. Stop with the bike lanes! The bikes still ride on the sidewalks even when there is a bike lane. We could use more road lanes rather than bike lanes. They are a big waste of tax payer money and a big nuisance.

To view this submission please click here:

<https://www.palmbeachtpa.org/admin/forms/submissions/41.5>

Sincerely,

Palm Beach TPA



Videos


- What is an MPO?
 - Partnership with Broward MPO
- TPA Funding Workshops (2017 and 2018)
- LRTP Survey - Regional PPS (2018)
- ADA Training Workshop (2018)
- MPOAC Board Training (2018)
- Regional Transportation Plan Rollout (2015)






E-Newsletters: Transportation Matters

- Produced 2x per month
- 62 issues
- 1,600 email recipients
- Posted to the website
 - View past issues
 - View in other languages with Google Translate

PALM BEACH
Transportation
Planning Agency

PalmBeachTPA.org

March 27, 2019




[Click here](#) to review previous issues or to view this issue using Google Translate.


News and Announcements

Federal Agencies Request Public Input on TPA Performance
Public Comments are due by May 10

[Click here](#) to learn more about the Federal Certification schedule and process to evaluate the performance of the Palm Beach TPA.

How are we doing?
Public feedback is an essential part of our Federal agency review!
You can provide direct input on the transportation planning process by sharing your comments about the effectiveness of the Palm Beach TPA.
Go to PalmBeachTPA.org/FederalCertification to enter comments using an online form that includes suggested topics!



PALM BEACH
Transportation
Planning Agency



Social Media



Palm Beach TPA @PalmBeachTPA · Mar 13

Join the TPA for a group [#BiketoWork](#) day ride into [@DowntownWPB](#) Fri. 3/15 from the [#MangoniaPark](#) [@Tri_Rail](#) station. Start at 7am for snacks + a group photo. Details of other group [#bike](#) rides + events in [@westpalmbch](#) this week at [wpbbiketowork.org](#) [@WPBgreen](#) [@SkyBikeWPB](#)



How are we doing?

Public feedback is an essential part of our Federal agency review! You can provide direct input on the transportation planning process by sharing your comments about the effectiveness of the Palm Beach TPA. Go to [PalmBeachTPA.org/FederalCertification](#) to enter comments using an online form that includes suggested topics.



PALM BEACH
Transportation Agency



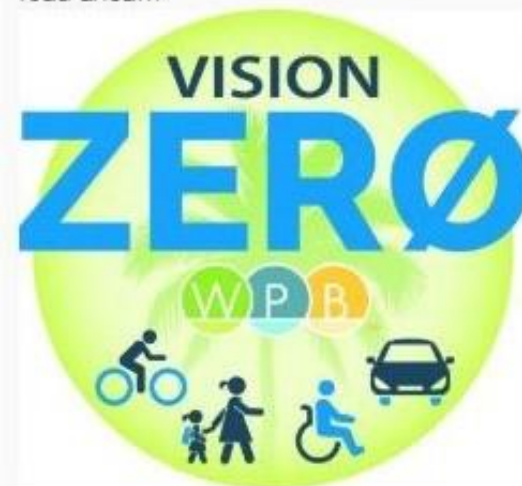
@PalmBeachTPA
March 22, 2019

RT @gbrulte: The Importance of Demo Days. <https://t.co/l0Qbzd0mab>



@PalmBeachTPA
March 22, 2019

RT @westpalmbch: A Vision Zero Spring Break safety tip: Be a respectful passenger. Allow the driver to maintain full focus on the road ahead...



@PalmBeachTPA
March 22, 2019



Social Media



Palm Beach Transportation Planning Agency (TPA)

167 followers

5mo

#MobilityWeek is our opportunity to explore various #transportation choices. We have beautiful weather to mix-it-up to #walk, #bike, #carpool, try #transit, #ridesharing or #telework Oct. 27-Nov. 3. #PalmBeachTPA joins #FDOT ...see more



As Florida residents, Mobility Week is our opportunity to explore various transportation choices available to us.

Why not Mix-It-Up?

During Mobility Week, why not try a new mode of transportation for your commute, shopping and recreation? You might discover that you enjoy the extra exercise, meeting new people and saving money on fuel while you avoid sitting behind the wheel.

Ride the bus or train to work. Walk or bike with your kids to the park. Form a bicycle or walking group to take your kids to school. Carpool or vanpool to the office with your coworkers. [Mix-It-Up!](#)



Palm Beach TPA @PalmBeachTPA · Mar 21

Palm Beach TPA Governing Board proclaims March as Bike Month at the Governing Board public meeting going on now at @Palm_Springs_FL Village Hall. Agenda at PalmBeachTPA.org/meeting



Palm Beach TPA @PalmBeachTPA · Apr 2

Stop #DistractedDriving !



Facebook



Twitter



LinkedIn



YouTube



Public Involvement Activity Report

- Monthly summary distributed in CAC and Board agenda packages
- Highlights:
 - e-newsletter issue dates and number of direct recipients
 - Social media analytics
 - Website analytics



March 2019

Public Involvement Activity Report

The Palm Beach TPA prioritizes public involvement in the local and regional transportation planning process, and utilizes various methods to communicate information and opportunities for public input:





TPA Website | Social Media | Meetings of the TPA Governing Board, Advisory and Ad-Hoc Committees | Special Workshops | Presentations | Exhibits | TPA Activities | Community Events

Transportation Matters E-News Issues: March 27 & March 31 (1,607 e-mail recipients)

Highlights

- March 1-31: Florida Bicycle Month
- 12 Bicycle Month Proclamations
- March 9: Palm Springs Bike Rodeo
- March 12: Lunch & Learn Bicycle Safety presentation
- March 15: Bike-to-Work Day group bike ride and event at WPB City Hall courtyard
- March 16: Westgate Bike Rodeo event

Platforms

				
Users or Followers	1,623	972	812	166
Number of Posts	n/a	7	14	5
Impressions or Sessions	2,528	4,286	11,700	658

Online Engagement





Partnership Events - WPB Bike-to-Work Day

- TPA led group bike ride
- Exhibits at City Hall courtyard





Partnership Events - SunFest Free Bike Valet





Partnership Events - League of Cities

- League of Cities annual Tri-Cities BBQ
- Hosts: Belle Glade, Pahokee, South Bay
- 500 attendees from local governments, partners
- TPA provides reusable tote bags for local produce giveaways





Partnership Events - GIS Expo

- Patron Level Supporter, 25th Anniversary (2018)
- 700+ attendees
- 89 Surveys completed



Our Patrons
Welcome you to the
2018 South Florida

GIS EXPO
25
Years of Spatial Innovation

GIS EXPO
Innovate with us, use our Interactive Schedule!
<http://maps.co.palm-beach.fl.us/sfgisexpo/schedule.html>
#SFGISEXPO



Board Member Participation



Walk to School Day

Bike to Work Day



Safe Streets Summit



Rotating Board Meeting Locations

Began in Dec 2017

16 Venues

Geographically
Diverse





LRTP Survey Data Collection

- Email blast to more than 100,000 Palm Beach County residents
 - Weekly follow-up to drive participation
- Promoted on TPA website, e-newsletter, social media, media
- Intercept Surveys
 - Special events, transit locations and community locations to ensure diversity
 - iPads used to access survey in English or Spanish
- Outreach to share the survey link
 - major corporations, chambers, partner agencies, and community groups



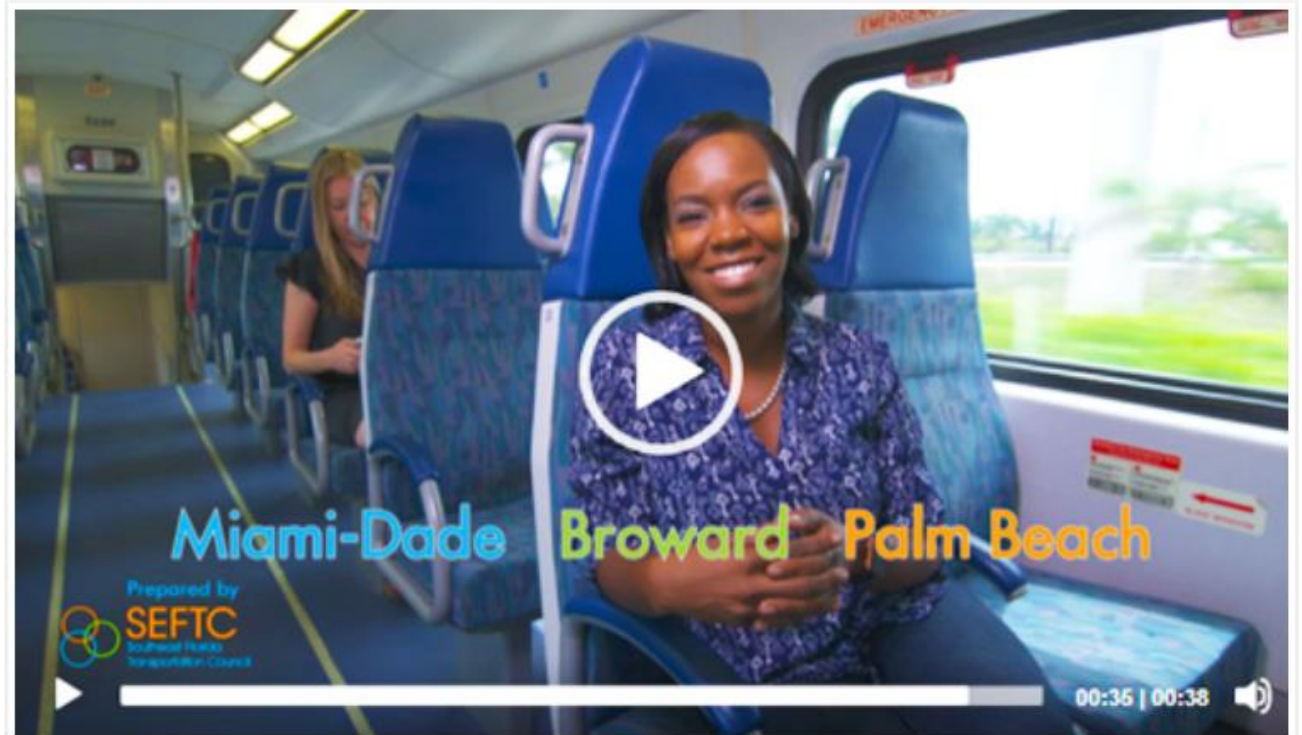
L RTP Survey Goals and Targets

- Palm Beach County population: 1.47 million
- 2,960 Survey Respondents
(Provides a 98% confidence interval)
- Ensure that broad sections of the community were reached through intercepts at diverse locations
- Online based survey
- English and Spanish translated surveys



L RTP Survey Messaging

- Reduce public focus on the year 2045
- Regional video
 - Created by the SEFTC Public Participation Subcommittee
 - Produced by consultants for the Regional Transportation Plan
 - Designed for flexibility

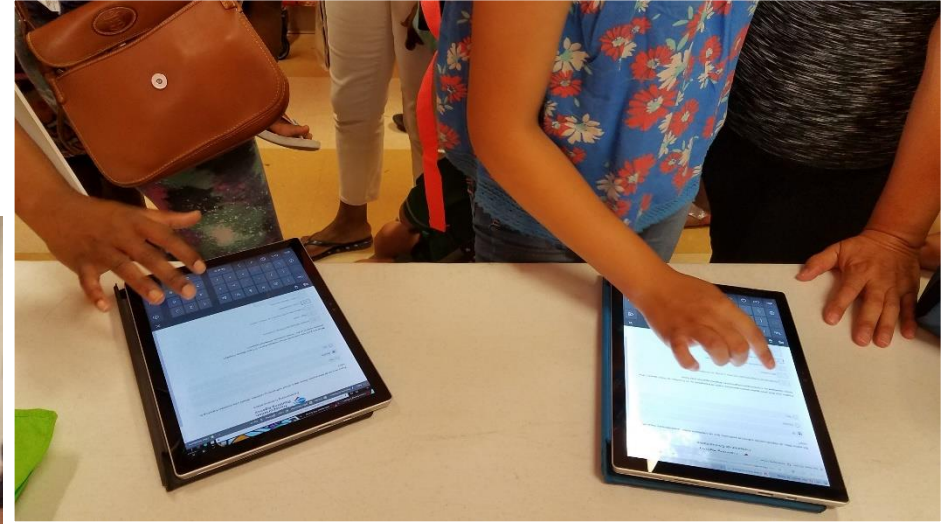




LRTP Survey Intercept Events

Back-to-School Bash events

Jupiter, Greenacres, and Delray Beach





LRTP Survey Intercept Events

VA Medical Center Riviera Beach





L RTP Survey Intercept Events

- Dump the Pump events at Tri-Rail stations in Boca Raton and WPB
- SunFest/DDA Bike Valet - WPB
- Back-to-School events - Jupiter, Greenacres and Delray Beach
- Brightline train station - WPB
- GIS Expo - PBC Convention Center
- VA Medical Center - Riviera Beach
- PBC Governmental Center
- Royal Palm Beach Library
- North County Senior Center - PB Gardens
- Palm Beach State College - Belle Glade
- Tri-Rail station - Boca Raton
- Palm Tran - WPB Multimodal Transit Hub



L RTP Survey Results

2045

Long Range Transportation Plan Survey

The public survey helps identify travel patterns and preferences in Palm Beach County.

How much would you spend on each type of project with \$100?

\$13.50 pedestrian projects

\$15 bicycle projects

\$25 transit projects

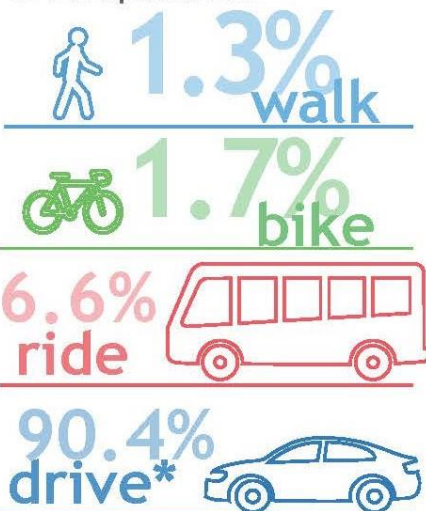
\$24.50 roadway capacity

\$22 technology-based projects

When coordinating improvements with adjacent counties, which are *most* important?

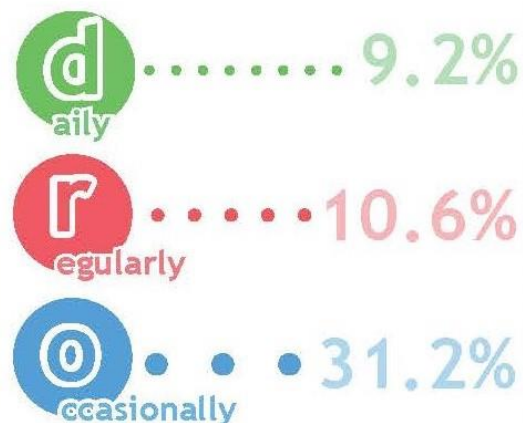


What is your **PRIMARY MODE** of transportation?



*Drive includes drive alone, carpool, and rideshare

How **OFTEN** do you travel to Broward and/or Miami-Dade counties?



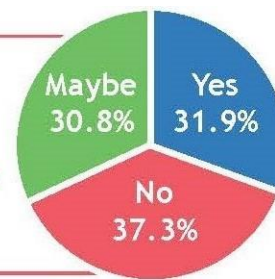
Which of the following transportation funding sources would **you support**?



What are your **top concerns** about transportation in Palm Beach County?



There is a lot of discussion these days about self-driving vehicles. Would you consider traveling in one?





Public Participation Plan

- Adopted Oct. 2017
- Updated TPA branding
- Single goal, 5 objectives, with measurable strategies and targets
- Reviewed annually





Public Participation Plan

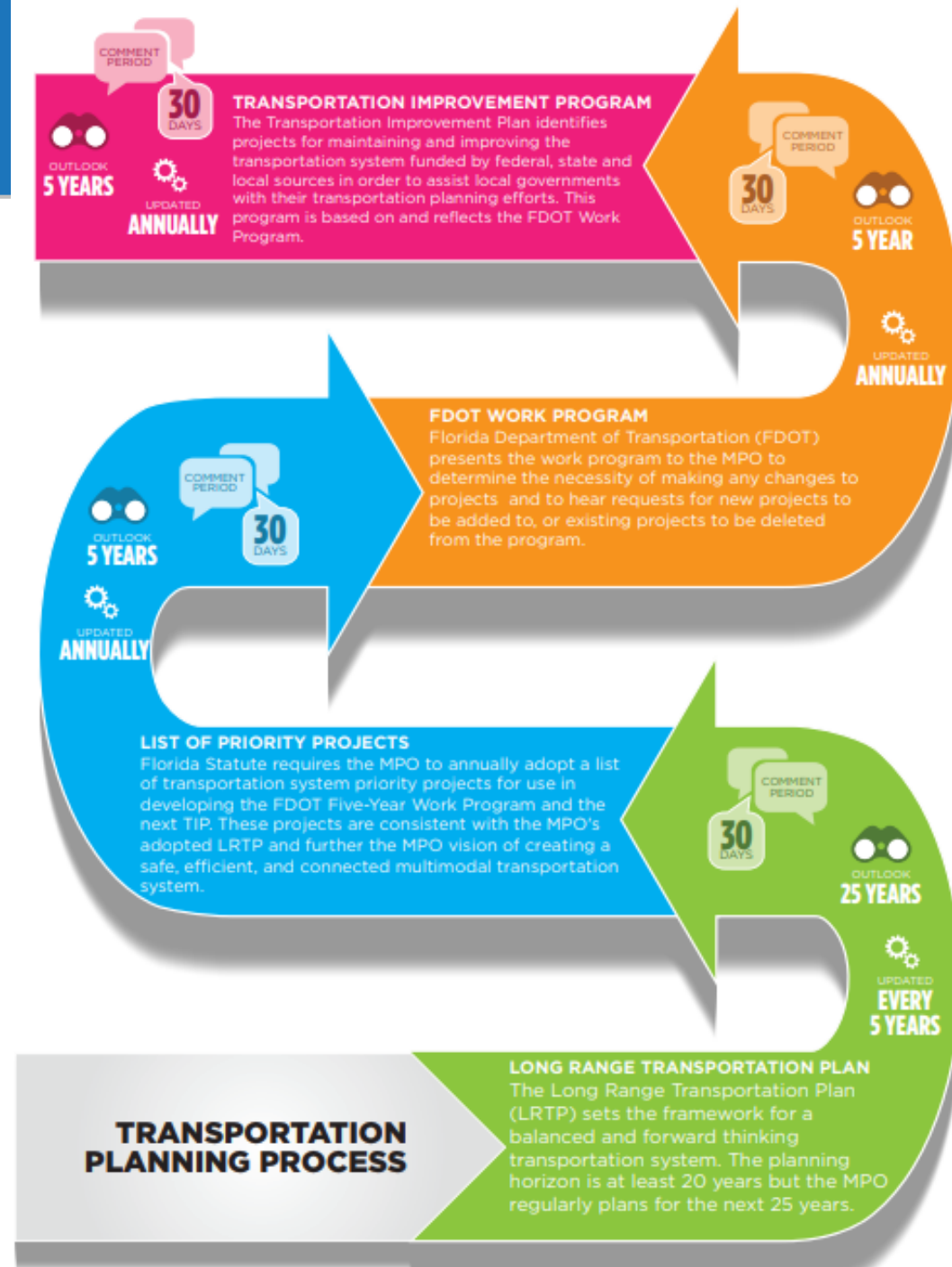
- Reasons and motivations to care about transportation planning
- Ways to get engaged, informed, and to influence transportation planning





Public Participation Plan

- Describes the decision-making process, time frames, and relationship between documents





Public Participation Plan

- Outlines the decision-making process, time frames, public notification for review and comment

LONG RANGE TRANSPORTATION PLAN DETAILS	
Updated:	Every 5 years
Outlook:	Minimum of 20 years, typically 25 years
Next Update:	Fall 2019
Adoption Process	Recommendations by TAC, BTPAC, and CAC; adoption by TPA Governing Board
Public Review and Comment Period:	30 days
Administrative Modifications:	Minor changes to project/project phase costs, funding sources of previously included projects, and/or project/project phase initiation dates that do not require public review and comment per 23 CFR 450.104 are posted to TPA website
Amendments:	Adoption Process: Recommendations by TAC, BTPAC, and CAC; adoption by TPA Governing Board Public Review and Comment Period: 14 days



Regional Public Participation and Outreach

- Three Counties,
One Traveling Public
- Regional Transportation Plan Rollout event, 3 Tri-Rail stations in 3 counties (Nov. 2015)
- Safe Streets Summit annual conferences and mobile workshops (Sunrise 2017, WPB 2018, Miami 2019)
- Dump the Pump Day (2018)

