



**FY 2019**  
**ANNUAL REPORT**  
(JULY 2018 - JUNE 2019)

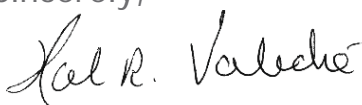


**PALM BEACH**  
Transportation  
Planning Agency

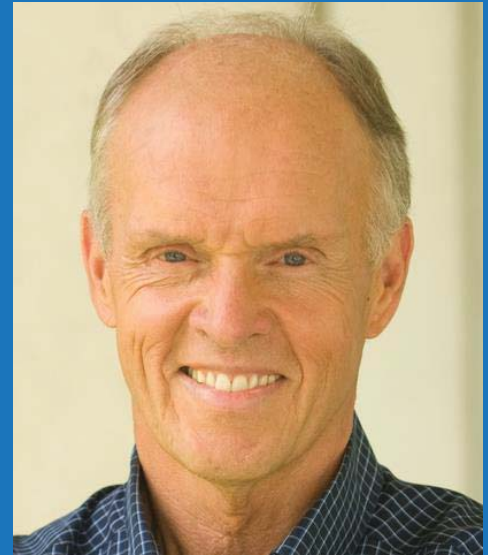
# Message from the TPA Chair

The success of the Palm Beach TPA lies in its ability to bring people together. The TPA is a unique body of elected officials that promotes strong collaboration between our state, our county and our cities; between roadway owners and transit service providers; between airports, seaports, and railways; and between regional and local mobility needs and preferences. The TPA is supported by a creative and energetic staff that seeks to fit the trends of the future into the systems of the past. The TPA is assisted by dedicated committee members who provide thoughtful input reflective of our diverse community. In addition, the TPA is committed to its vision of a safe, efficient, connected and multimodal transportation system for all of Palm Beach County. It is my pleasure to serve as the Chair for the Palm Beach TPA and I look forward to ushering in the future of our transportation system together.

Sincerely,



Palm Beach County Commissioner Hal Valeché  
Palm Beach TPA Board Chair



**The TPA Governing Board is comprised of 21 local elected officials:**

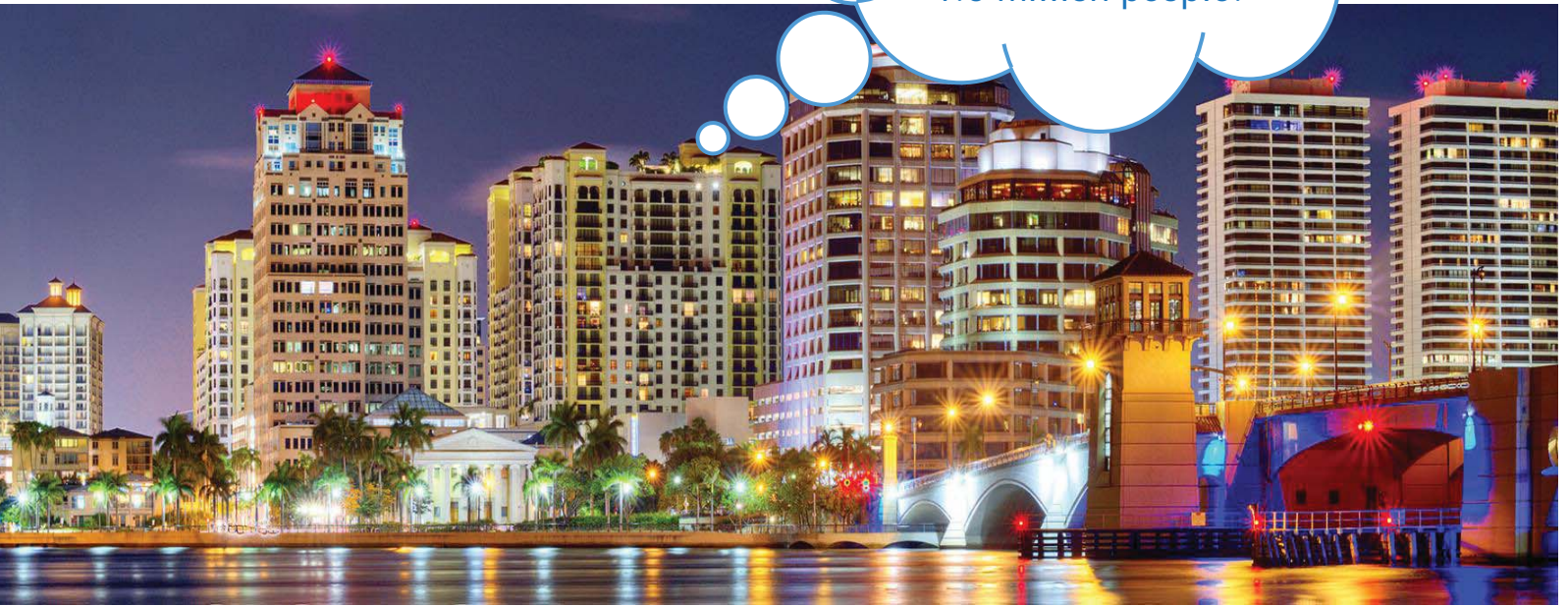
- 5 County Commissioners
- 15 City Officials
- 1 Port Commissioner

**The TPA is supported by the following advisory committees:**

- 24 Technical Advisory Committee (TAC) members
- 14 Citizens Advisory Committee (CAC) members
- 13 Bicycle-Trailways-Pedestrian Advisory Committee (BTPAC) members
- 17 Transportation Disadvantaged Local Coordinating Board (LCB) members

# Who We Are

The TPA leads transportation planning for Palm Beach County, Florida, an area of over 2,000 square miles with a population of nearly 1.5 million people.



Our **mission** is to collaboratively plan, prioritize, and fund the transportation system.

Our **vision** is a safe, efficient, connected and multimodal transportation system.

We Focus on 6 Goals that Support our Mission and Vision:

- Engage the Public
- Plan the System
- Prioritize Funding
- Implement Projects
- Collaborate with Partners
- Administer the Agency

# We Engage the Public

The TPA partners with local governments and organizations in a wide variety of outreach opportunities throughout the year to engage the public of all ages in transportation planning and travel mode choices.



The Long Range Transportation Plan (LRTP) maps out the next 25 years of state and federal transportation system investments in Palm Beach County. The LRTP seeks to advance the TPA's vision of a safe, efficient, connected and multimodal system.

### Did You Know?

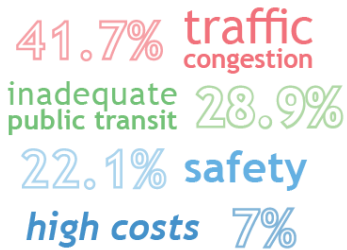
The TPA conducted a survey of nearly 3,000 residents and the results are summarized below.

# 2045

## Long Range Transportation Plan Survey

The public survey helps identify travel patterns and preferences in Palm Beach County.

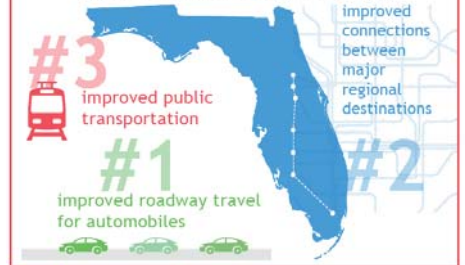
What are your *top concerns* about transportation in Palm Beach County?



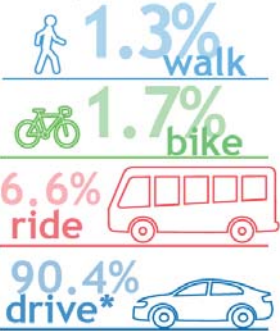
Which of the following transportation funding sources would you support?



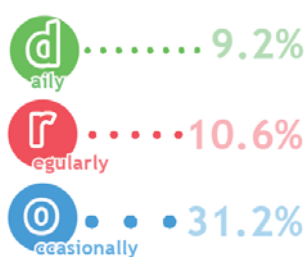
When coordinating improvements with adjacent counties, which are *most* important?



What is your **PRIMARY MODE** of transportation?

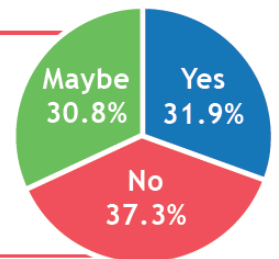


How **OFTEN** do you travel to Broward and/or Miami-Dade counties?



There is a lot of discussion these days about self-driving vehicles.

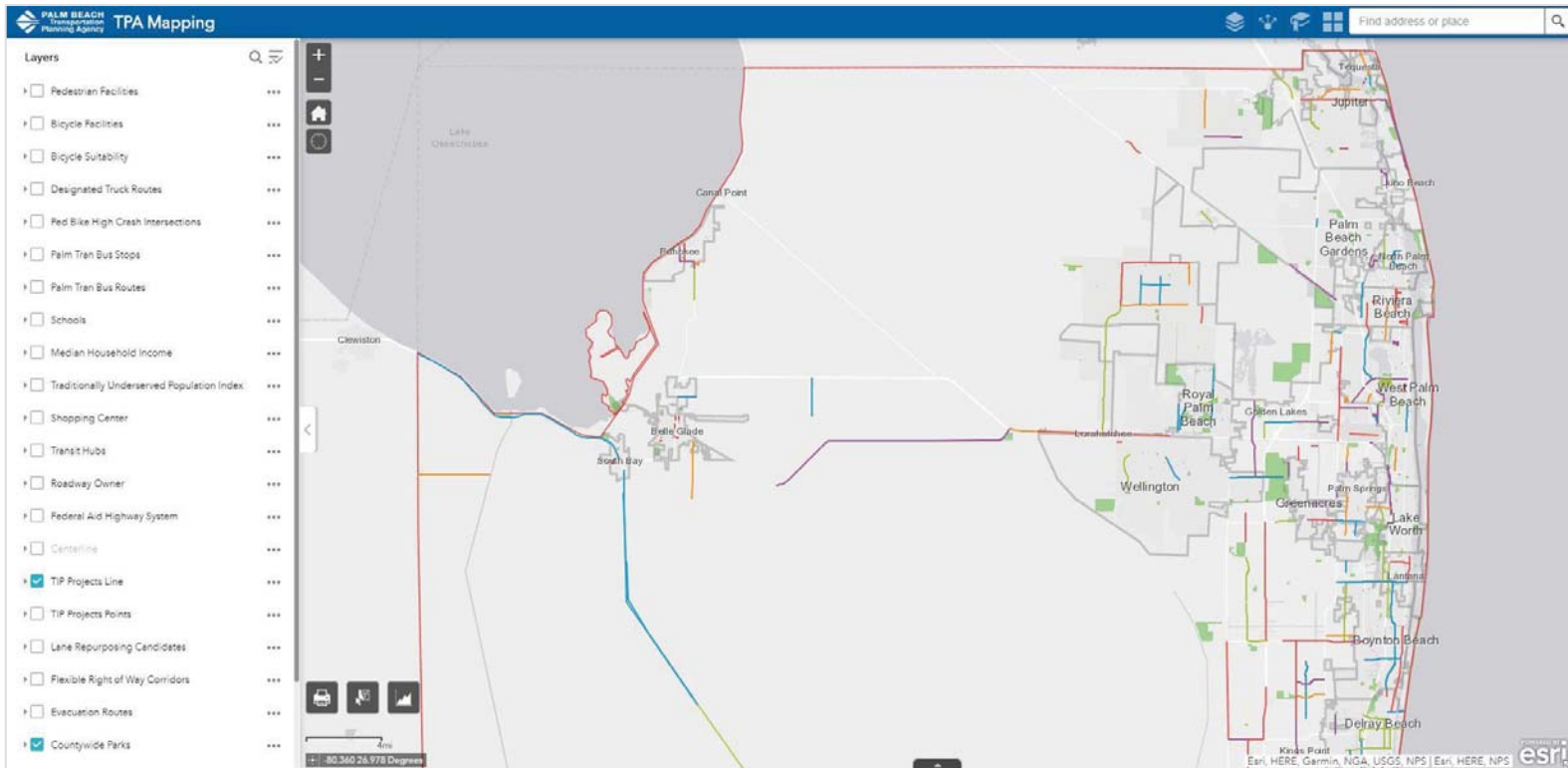
Would you consider traveling in one?



\*Drive includes drive alone, carpool, and rideshare

# We Plan the System

Planning the system starts with knowing what we have. Where people live, work, learn, shop and play, and what our pedestrian, bicycle, transit and roadway networks provide. Then we add what we have already committed to build in the next few years and how we expect to grow in the future. Together, these datasets allow us to select the best projects and services to support our communities and progress toward our vision.

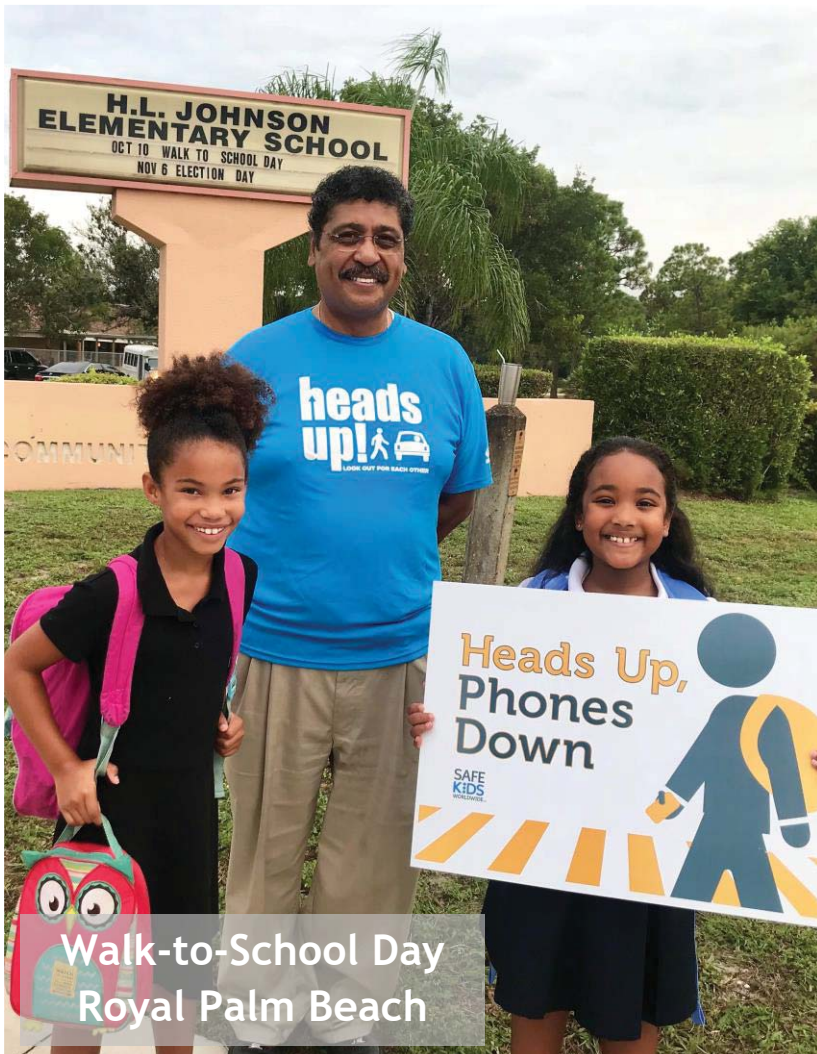


Check out this interactive transportation planning map at [PalmBeachTPA.org/map](https://PalmBeachTPA.org/map)

The TPA also conducts field studies and walking audits to document existing conditions and identify modifications to improve safety and connectivity for all.



Lake Worth Road Corridor Study  
Palm Springs



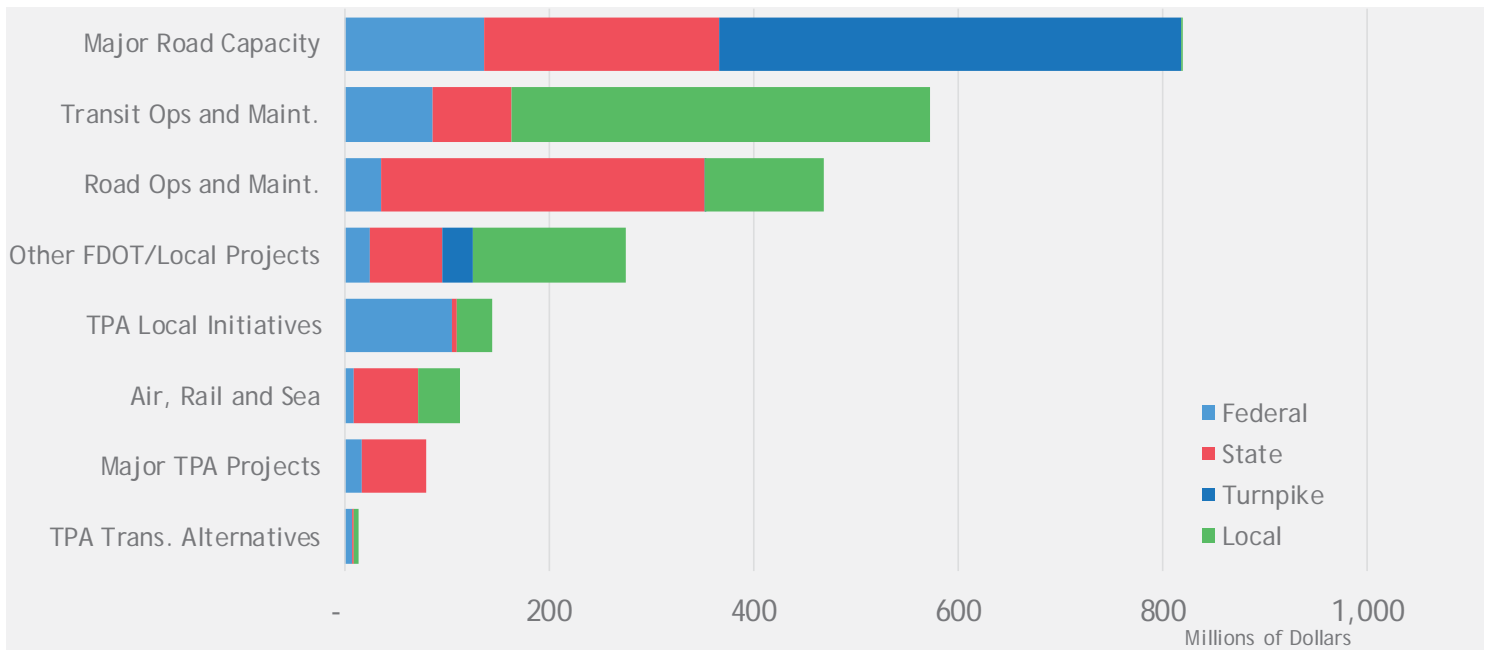
Walk-to-School Day  
Royal Palm Beach



Transit Access Study  
at Atlantic Avenue  
& Military Trail  
Delray Beach

# We Prioritize Funding

The TPA's Transportation Improvement Program (TIP) allocates approximately \$2.8 billion to more than 450 projects over the next five years, funding all modes of transportation throughout Palm Beach County.



The TPA funds supplemental safety measures to provide additional protection for all users along the FEC rail corridor including pedestrians, bicyclists and vehicles.





The TPA's Local Initiatives (LI) program provides ~\$20M/year for community initiated multimodal transportation projects.



Green Bike Lanes in Delray Beach



Pedestrian Bridge at Canal Point

The TPA's Transportation Alternatives (TA) program provides ~\$3M/year for non-motorized facilities.

# We Implement Projects

Although the TPA does not build anything, we follow our priority projects all the way through construction.



The SR-80 widening project in central Palm Beach County will provide a shared-use pathway, buffered bike lanes, enhanced transit stops and additional vehicle capacity.

The I-95 interchange modifications at Atlantic Avenue improve regional access to Delray Beach, and provide enhanced pedestrian and bicycle facilities for the community.



A lane repurposing from 6 to 4 lanes allowed for improved facilities for the safety and comfort of all roadway users including pedestrians and bicyclists.



US-1 in Tequesta

The new Southern Boulevard Bridge replaces a 1950's structure and introduces buffered bike lanes and improved pedestrian facilities.

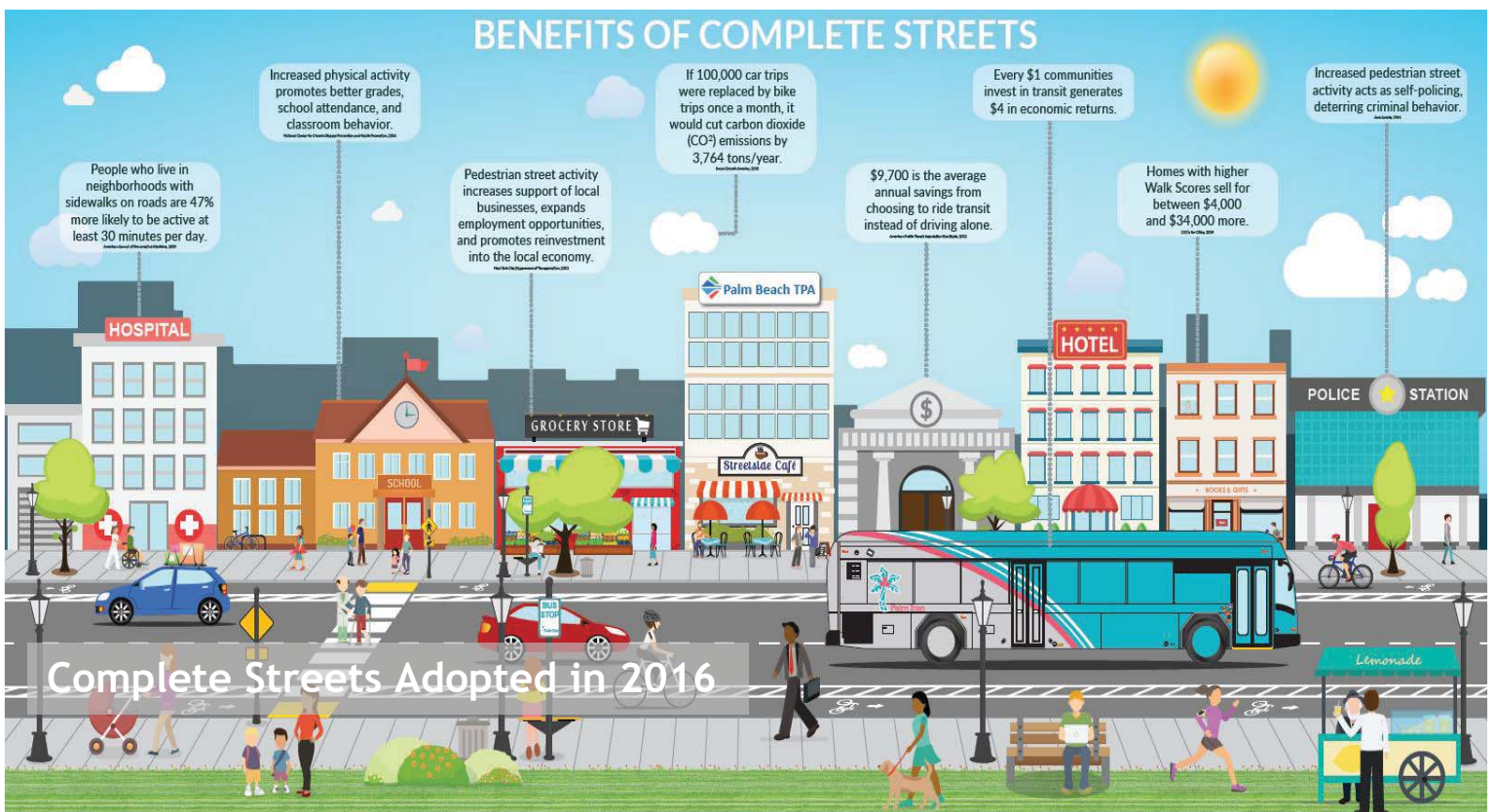


Southern Boulevard Bridge

# We Collaborate with Partners

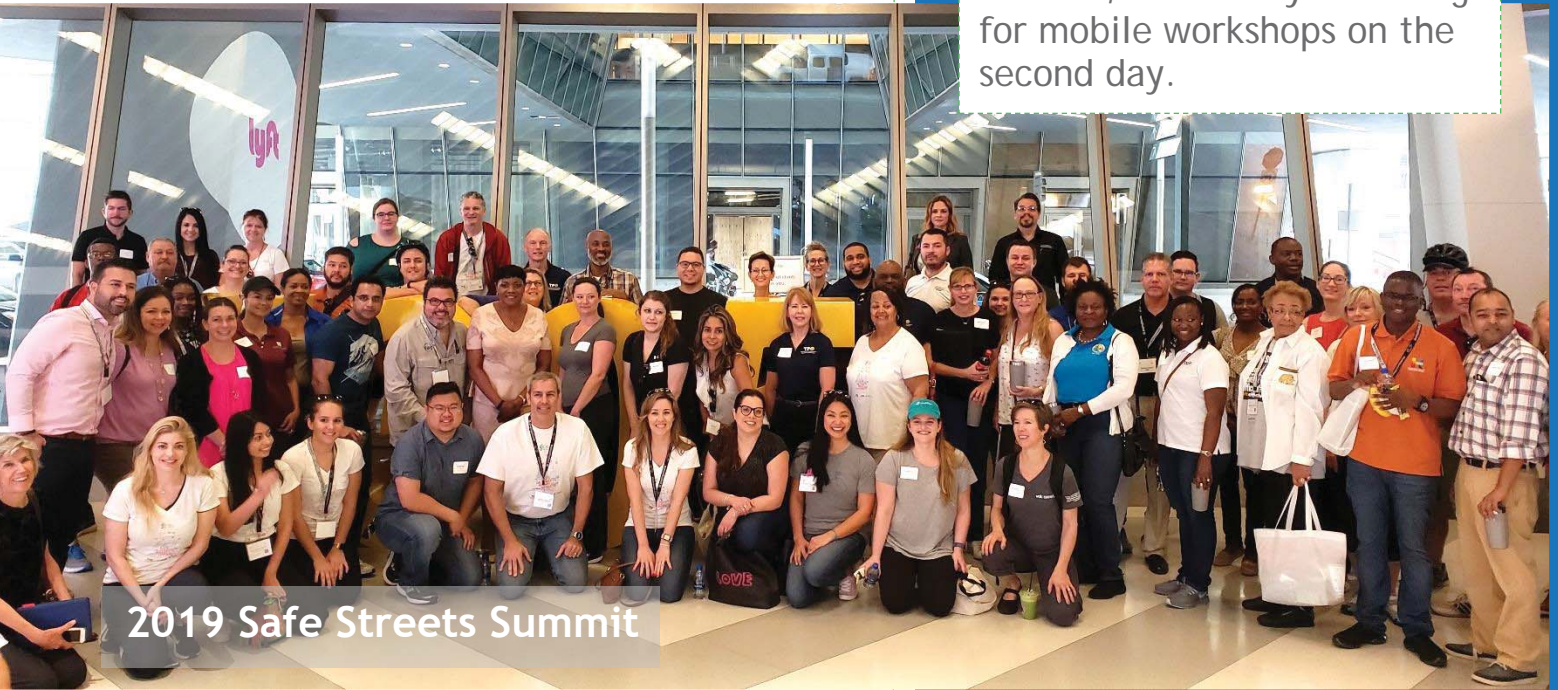
The TPA encourages local municipalities to adopt a Complete Streets Policy and has created a Model Complete Streets Policy and Policy Development Guidance that can be tailored to fit each municipality.

As a demonstration of the TPA's commitment to assist local governments to comply with ADA Transition Plan requirements for sub-recipients of federal funds, including transportation funding allocations, the TPA hosted a training workshop on October 11, 2018.



Go to [PalmBeachTPA.org/CompleteStreets](https://PalmBeachTPA.org/CompleteStreets) for the model policy

More than 400 attended this year's regional Safe Streets Summit, with many returning for mobile workshops on the second day.



2019 Safe Streets Summit



ADA Transition Plan Workshop



The TPA hosted an ADA Transition Plan compliance workshop and a FHWA Lane Repurposing workshop.

# We Administer the Agency

The TPA is committed to training our Board and staff, creating top-notch facilities that support the planning process, implementing our strategic plan and operating under sound financial and administrative controls.





# PALM BEACH Transportation Planning Agency

## Fiscal Report

FY 2019 3rd Quarter  
01/01/2019-03/31/2019

Grant Funded Activities	Annual Budget	Budget YTD	Actual YTD	Variance <sup>1</sup>
<b>Revenue Source</b>				
Federal Highway Administration (FHWA)	\$ 1,312,101	\$ 1,009,076	\$ 928,107	-8%
Federal Transit Administration (FTA)	\$ 1,692,530	\$ 1,269,398	\$ 422,923	-67%
FTA Match from Palm Beach County	\$ 188,059	\$ 141,044	\$ 46,991	-67%
Commission for Transportation Disadvantaged	\$ 49,795	\$ 37,346	\$ 43,192	16%
<b>Total Revenue</b>	<b>\$ 3,242,485</b>	<b>\$ 2,456,864</b>	<b>\$ 1,441,214</b>	<b>-41%</b>
<b>Expenditures</b>				
Personnel & Benefits	\$ 1,355,117	\$ 1,016,338	\$ 755,321	-26%
Travel & Training	\$ 61,200	\$ 45,900	\$ 28,450	-38%
Consultant Services	\$ 1,001,000	\$ 750,750	\$ 392,992	-48%
Direct Expenses				
Facilities	\$ 359,928	\$ 269,946	\$ 27,441	-90%
Professional Services	\$ 49,500	\$ 37,125	\$ 47,687	28%
Administrative Services & Fees	\$ 30,960	\$ 23,220	\$ 9,625	-59%
Graphics & Legal Advertising	\$ 19,800	\$ 14,850	\$ 10,992	-26%
Operational Supplies & Equipment	\$ 28,380	\$ 21,285	\$ 17,917	-16%
Capital Equipment & Improvements	\$ 192,000	\$ 144,000	\$ -	-100%
Plan the System Software Licensing	\$ 44,600	\$ 33,450	\$ 12,085	-64%
<b>Total Expenditures</b>	<b>\$ 3,142,485</b>	<b>\$ 2,356,864</b>	<b>\$ 1,302,510</b>	<b>-45%</b>
Other Agencies	\$ 100,000	\$ 100,000	\$ 100,000	0%
	\$ 100,000	\$ 100,000	\$ 100,000	0%
			\$ 1,402,510	-43%

### Did You Know?

The TPA reports on its financial health quarterly and its Strategic Plan annually.



## FY 19 STRATEGIC PLAN REPORT CARD

### Goals, Actions and Outcomes



#### ENGAGE THE PUBLIC

Action	Outcome(s)	Status
A. Create new brand collateral (handouts, giveaways)	New annual report created in June 2019	✓
B. Expand social media outreach to inform and engage the public	Monthly social media activity reports provided	✓
C. Conduct outreach events (e.g. Safe Streets Summit, Bike to Work Ride, Walk/Bike to School Day, etc.)	Had 3,000 respondents and 5,700 participants	✓
D. Update video explaining role of the TPA	Have not created new video for website	✗



#### PLAN THE SYSTEM

Action	Outcome(s)	Status
A. Commence 3 new multimodal studies	Lake Worth Rd, Forest Hill Blvd, US 1 in North Palm	✓
B. Conduct 3 Safe Routes to School and/or Walking Safety Audits	Lake Worth Rd, Royal Palm Beach Blvd, US 1 in Delray	✓
C. Create interactive transportation planning map site	PalmBeachTPA.org/map created fall 2018	✓
D. Publish Long Range Transportation Plan Implementation Report	Published report June 2019	✓
E. Create Transit Shelter Design Guide	Design guide in process	🔄



#### PRIORITIZE FUNDING

Action	Outcome(s)	Status
A. Maintain website of funding opportunities	Currently maintain PalmBeachTPA.org/funding	✓
B. Select system performance measure targets based on values and cost feasibility	Targets selected March 2019	✓
C. Update LI/TA Scoring System to ensure projects advance TPA Priorities	Updated scoring system in December 2018	✓
D. Submit applications for Discretionary Grants (New Starts, CRISI, BUILD, Smart Cities, etc.)	Submitted for FHWA/FTA Peer Exchange Program	✓



#### IMPLEMENT PROJECTS

Action	Outcome(s)	Status
A. Review FDOT, County and City project designs to ensure all funded projects advance TPA priorities	Reviewed >20 Projects	✓
B. Publish annual system report card on status of TPA performance measures and projects to improve them	Published system report card in Feb 2019	✓
C. Monitor status of TPA priority projects	Provided first status report in April 2019	✓



#### COLLABORATE WITH PARTNERS

Action	Outcome(s)	Status
A. Create Model Complete Street Policy for County, Cities	Model Policy posted to PalmBeachTPA.org/CompleteStreets	✓
B. Research an alternative to road impact fee system	TPA staff currently refining an alternative	🔄
C. Provide ADA Transition Plan Training Workshop	Workshop held in October 2018	✓
D. Conduct FHWA Lane Repurposing Workshop	Workshop held in February 2019	✓



#### ADMINISTER THE AGENCY

Action	Outcome(s)	Status
A. Provide Board Member Training (MPOAC Institute, National Conferences, Local Workshops)	Provided >15 Training events	✓
B. Provide TPA Staff Training	Provided >22 Training events	✓
C. Move to new office and meeting space	Move anticipated in Sept 2019	🔄
D. Provide financial reports	Provided quarterly financial reports	✓
E. Provide strategic plan report	Provided annual strategic plan report	✓

MET ✓ | IN PROCESS 🔄 | NOT MET ✗

# TPA Governing Board Members & Staff

**Hal Valeché**  
TPA Chair  
Commissioner  
Palm Beach County

**Maria Marino**  
TPA Vice Chair  
Council Member  
Palm Beach Gardens

**Joseph Anderson**  
Commissioner  
Port of Palm Beach

**Mary Lou Berger**  
Commissioner  
Palm Beach County

**Joni Brinkman**  
Vice Mayor  
Palm Springs

**Joel Flores**  
Mayor  
Greenacres

**Steven Grant**  
Mayor  
Boynton Beach

**Jim Kuretski**  
Vice Mayor  
Jupiter

**Shirley Lanier**  
Council Member  
Riviera Beach

**Melissa McKinlay**  
Commissioner  
Palm Beach County

**Michael Napoleone**  
Vice Mayor  
Wellington

**Cory Neering**  
Commissioner  
West Palm Beach

**Joseph Peduzzi**  
Commissioner  
West Palm Beach

**Shelly Petrolia**  
Mayor  
Delray Beach

**Fred Pinto**  
Mayor  
Royal Palm Beach

**Scott Singer**  
Mayor  
Boca Raton

**Andy Thomson**  
Council Member  
Boca Raton

**Pam Triolo**  
Mayor  
Lake Worth Beach

**Robert Weinroth**  
Commissioner  
Palm Beach County

**Gregg Weiss**  
Commissioner  
Palm Beach County

**Steve Wilson**  
Mayor  
Belle Glade

**Gerry O'Reilly**  
District Secretary  
FDOT District Four

**Nick Uhren**  
Executive Director

**Malissa Booth**  
Public Relations  
Manager  
Title VI & ADA Officer

**Valerie Neilson**  
Deputy Director of  
Multimodal  
Development

**Andrew Uhlir**  
Deputy Director of  
Program Development

**Matthew Komma**  
Chief Financial  
Officer

**Margarita Pierce**  
Executive Assistant

**Vacant**  
Public Relations  
Specialist

**Nicholas Hernandez**  
Lead Planner  
Pedestrian/Bicycle  
Coordinator

**Michael Lynch**  
Lead Planner  
LRTP Coordinator

**Vacant**  
Procurement/  
Grants Coordinator

**Alexa Sanabria**  
Executive Secretary

**Vacant**  
Lead Planner  
Transit Coordinator

**Jason Price**  
Lead Planner  
TIP Coordinator

**Alyssa Frank**  
Transportation  
Planner I

**Gregory Gabriel**  
Transportation  
Planner II



**PALM BEACH**  
Transportation  
Planning Agency

2300 N Jog Road, 4<sup>th</sup> Floor | West Palm Beach, FL 33411

561.684.4170 | [www.PalmBeachTPA.org](http://www.PalmBeachTPA.org)